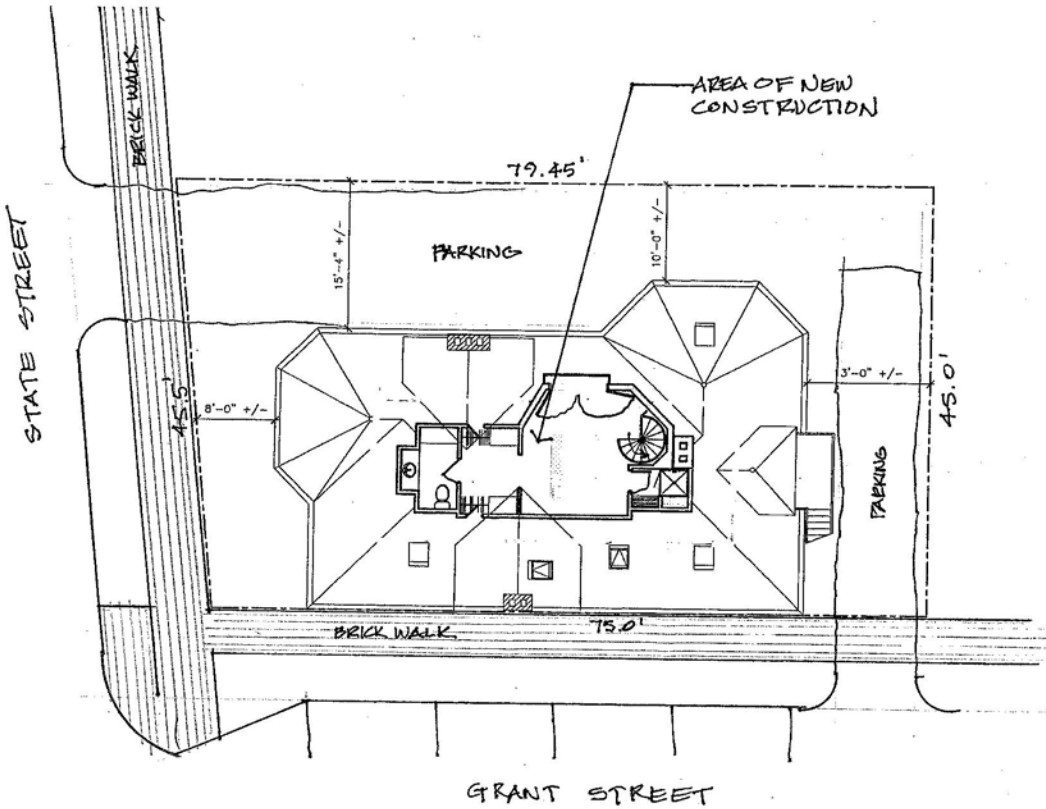




ALPHAarchitects
17 CHESTNUT STREET
PORTLAND, ME 04101
PHONE: 207.761.9500
FAX: 207.761.9595
design@alpharchitects.com

COPYRIGHT
Professional Seal of the
State of Maine
Architectural Board
of ARCHITECTS



Site Plan
1" = 20'-0"

Brazell Residence Unit B
276 State Street, Unit B
Portland ME 04102

JOB: 14012

ISSUE DATE	
HP Bd	3-4-15
REV 1	-
CD's	-
PRINT	4-28-15

AS1