

SIDE VIEW

105 SHERMAN ST PORTLAND ME  
EXTERIOR MAIN ENTRANCE

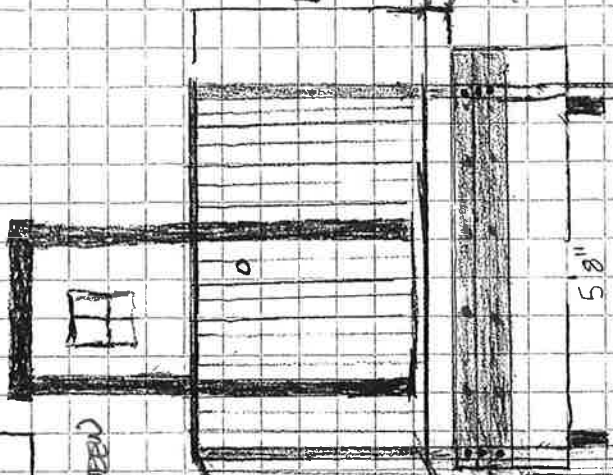
PG 1

SCALE 3/8" = 1'

[I] - SIMPSON STRONG TIE / ADJUSTABLE BASE PLATE

- NOTES - ALL RIM JOISTS AND FRAMING TO BE DONE WITH **PT** 2x8
- POSTS TO BE 4x4 **PT**
- ALL STRUCTURAL FASTENERS TO BE 4" x 10 GRK AND 3/8 R55 GRK 1/2" AT SHEAR FORCE POINTS
- SIMPSON LUB 2x8 FACE MOUNT JOIST HAGERS AT ALL JOIST TO DOUBLE RIM JOIST CONNECTIONS

3" SPACING BETWEEN ALL SPINDLES



42" FROM TOP OF FRAMING TO BOTTOM OF FRAMING

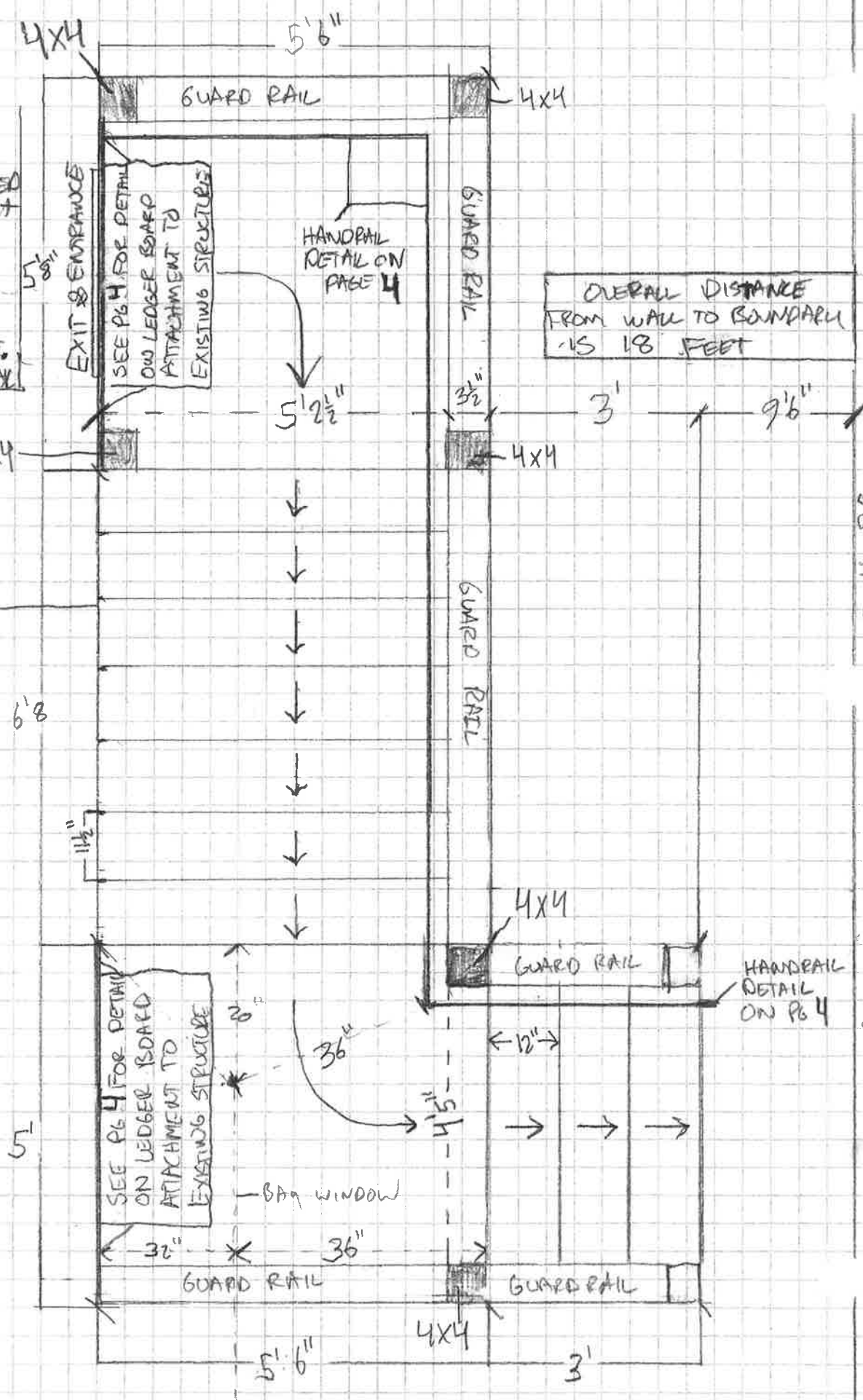
FRONT OF BOTTOM LANDING TO FRONT OF TOP LANDING

NEW 8" CONCRETE FOOTERS 4 FEET BELOW GRADE. SEE PAGE 5 FOR DETAIL ON FOOTERS

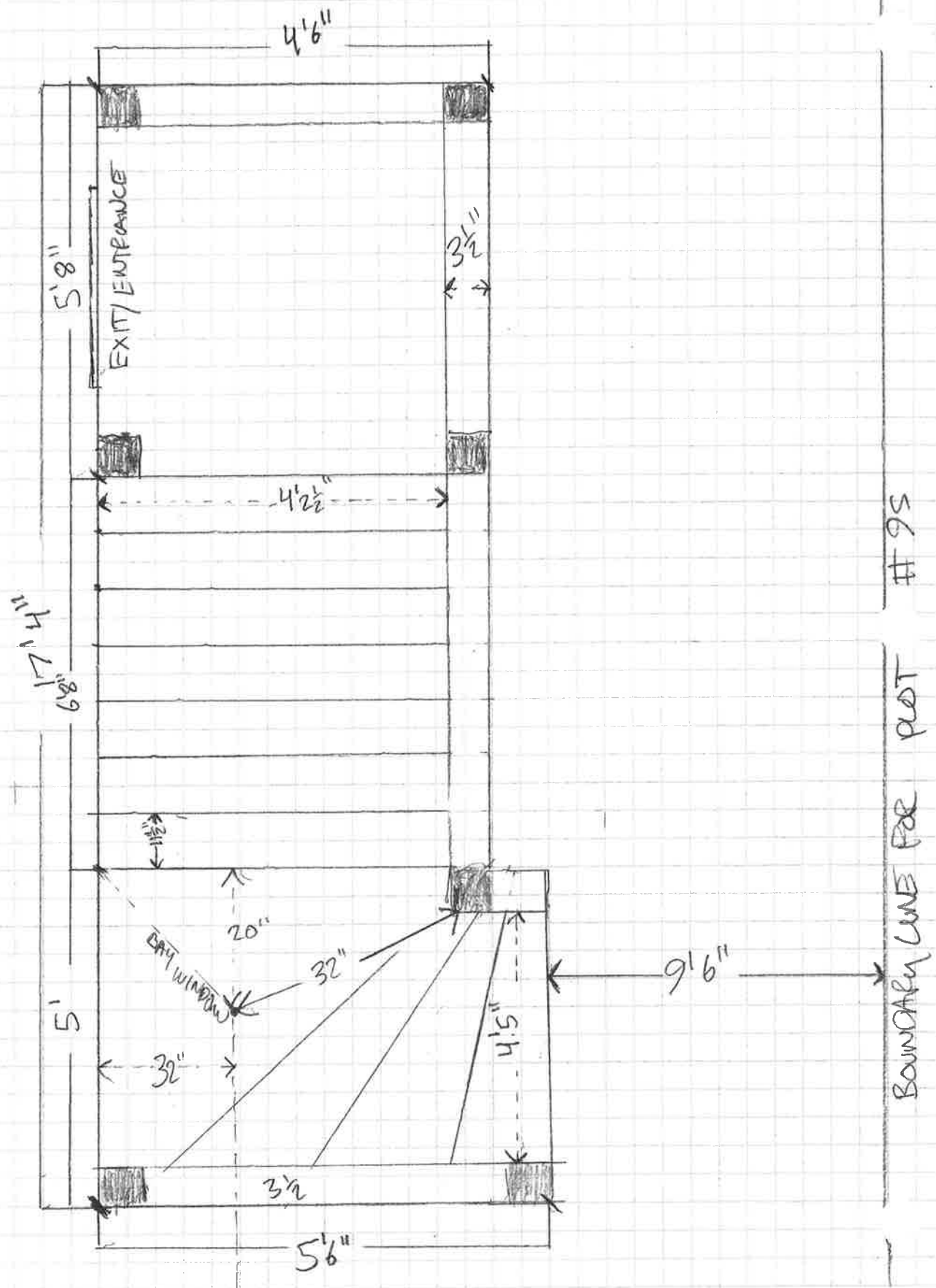
FEB 15, 2017

NOTES:  
 ALL SHADED 4x4 POSTS ARE IDENTIFIED TO SHOW WHICH POSTS HAVE A 8" CONCRETE FOOTER SUPPORTING THE STRUCTURE. SEE PG 5 FOR DETAIL.

EXTERIOR OF WALL IS TIGHT TO STAIRS



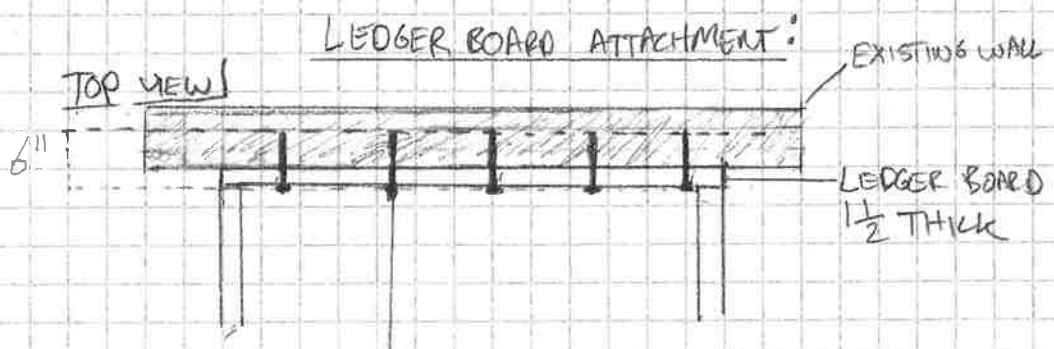
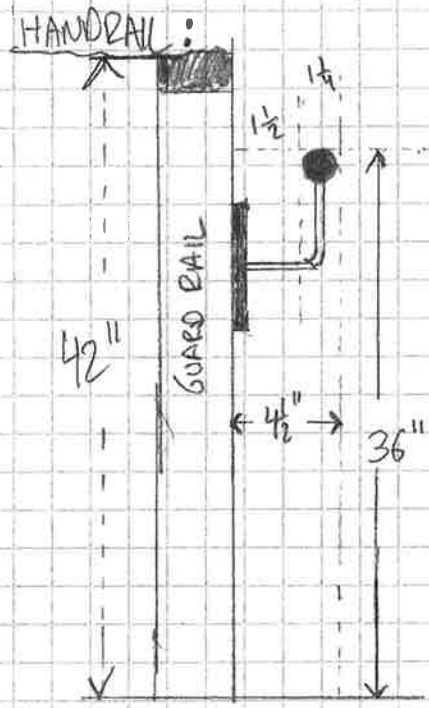
BOUNDARY LINE FOR PLOT # 95



# 95

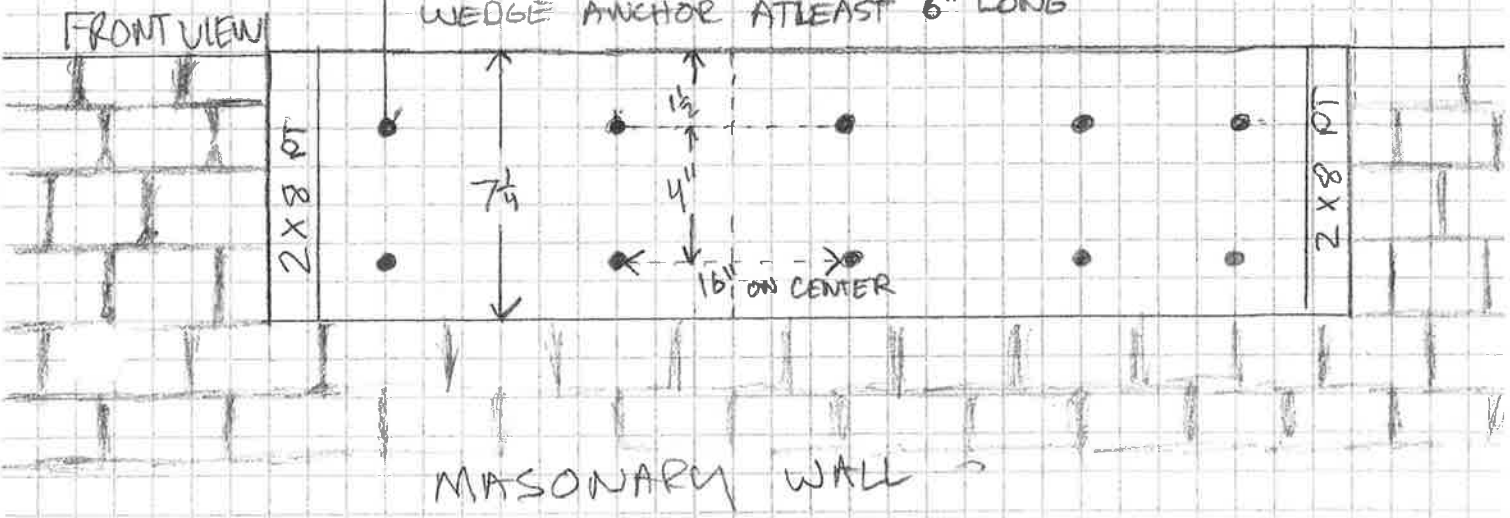
BOUNDARY LINE FOR POST

# HANDRAIL AND LEDGER BOARD DETAILS



NOTE: THE LEDGER BOARDS USED ON THE TOP AND BOTTOM LANDING, HAVE THE SAME SYSTEM / FASTENERS FOR SECURE THE NEW STAIRS TO THE EXISTING STRUCTURE

ALL MASONRY ANCHORS ARE TO BE 1/2" GALVANIZED WEDGE ANCHOR ATLEAST 6" LONG



# DETAIL ON FROST PROTECTION FOR 8" CONCRETE FOOTERS

