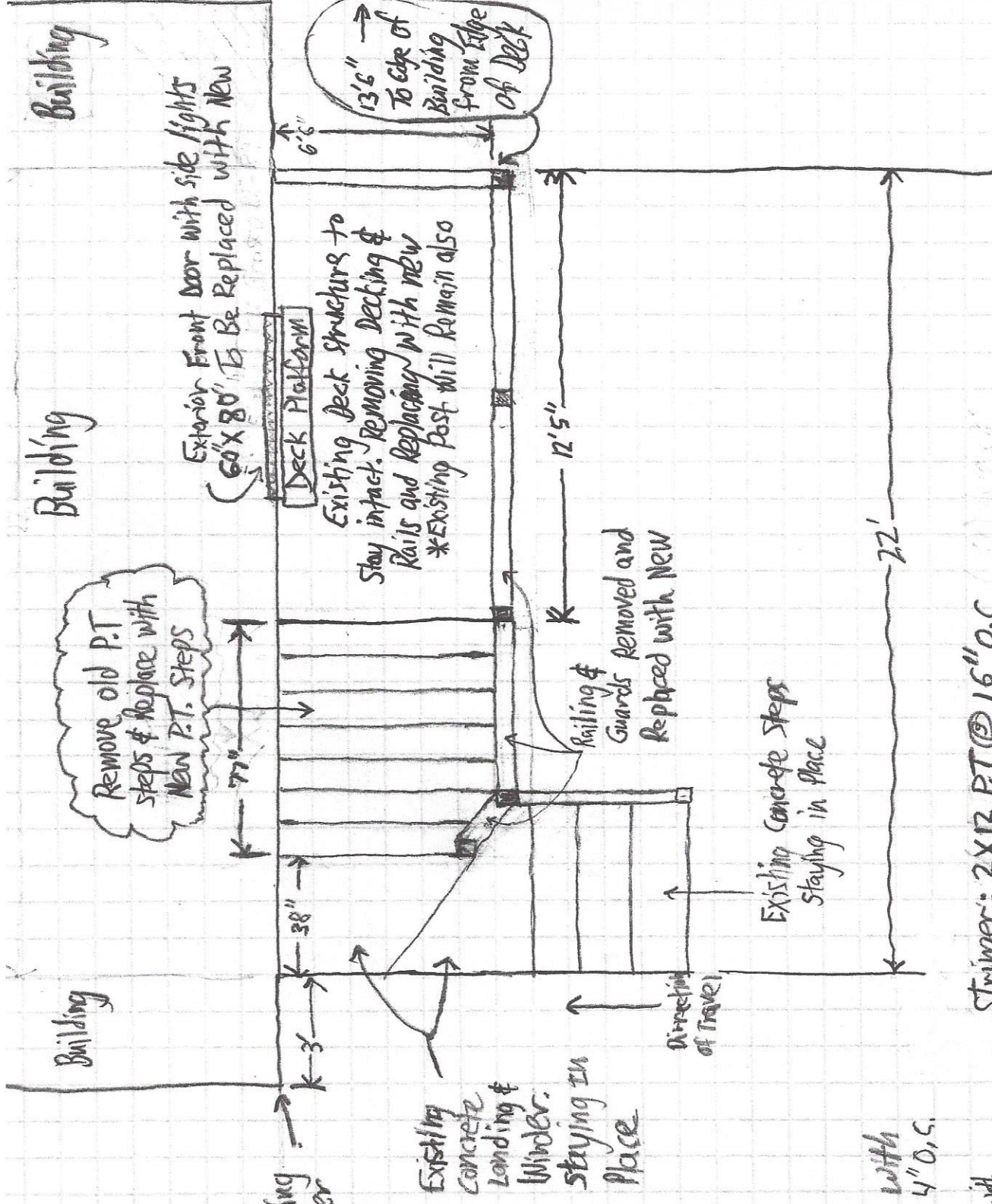


134 Grant St.
Front Steps

1. Front Deck Detail



Building Corner

Existing concrete Landing & Winder staying in place

Steps
11" Run
7" Rise

Railings
Guards = 42" High with Balusters 4" O.C.

Hand Railing = 36" High with on steps balusters 4" o.c.

Stringer: 2x12 P.T @ 16" O.C.

Decking & Stair treads: 5/4 P.T.

Front Door: 60" x 80" (Stanley KY, Brosco BE-89, Thermana True, style 204)

Scale: 1 Box = 1'