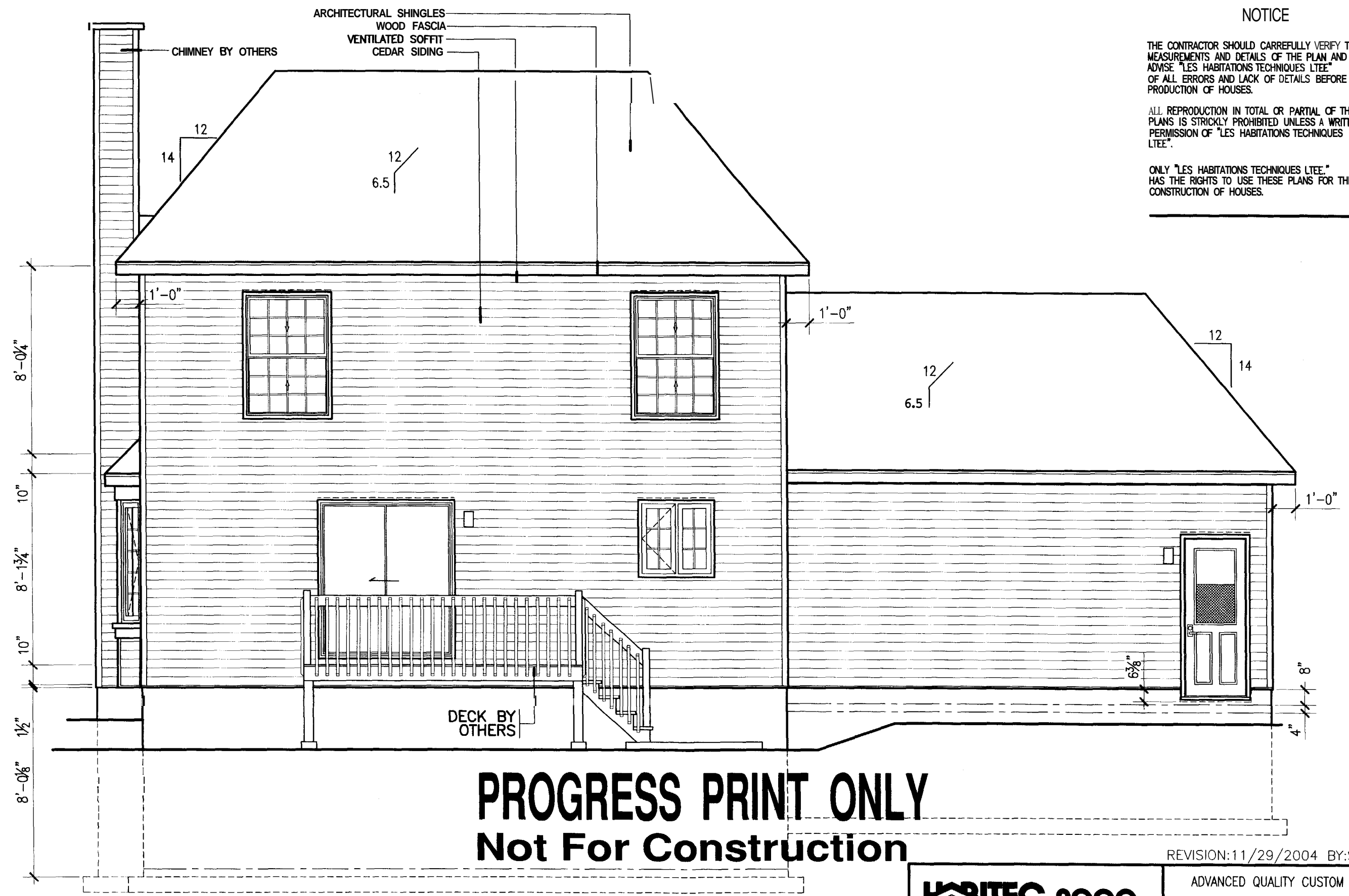


NOTICE

THE CONTRACTOR SHOULD CAREFULLY VERIFY THE MEASUREMENTS AND DETAILS OF THE PLAN AND ADVISE "LES HABITATIONS TECHNIQUES LTEE" OF ALL ERRORS AND LACK OF DETAILS BEFORE THE PRODUCTION OF HOUSES.

ALL REPRODUCTION IN TOTAL OR PARTIAL OF THESE PLANS IS STRICTLY PROHIBITED UNLESS A WRITTEN PERMISSION OF "LES HABITATIONS TECHNIQUES LTEE".

ONLY "LES HABITATIONS TECHNIQUES LTEE" HAS THE RIGHTS TO USE THESE PLANS FOR THE CONSTRUCTION OF HOUSES.



REAR ELEVATION

**PROGRESS PRINT ONLY
Not For Construction**

REVISION: 11/29/2004 BY: S.C.

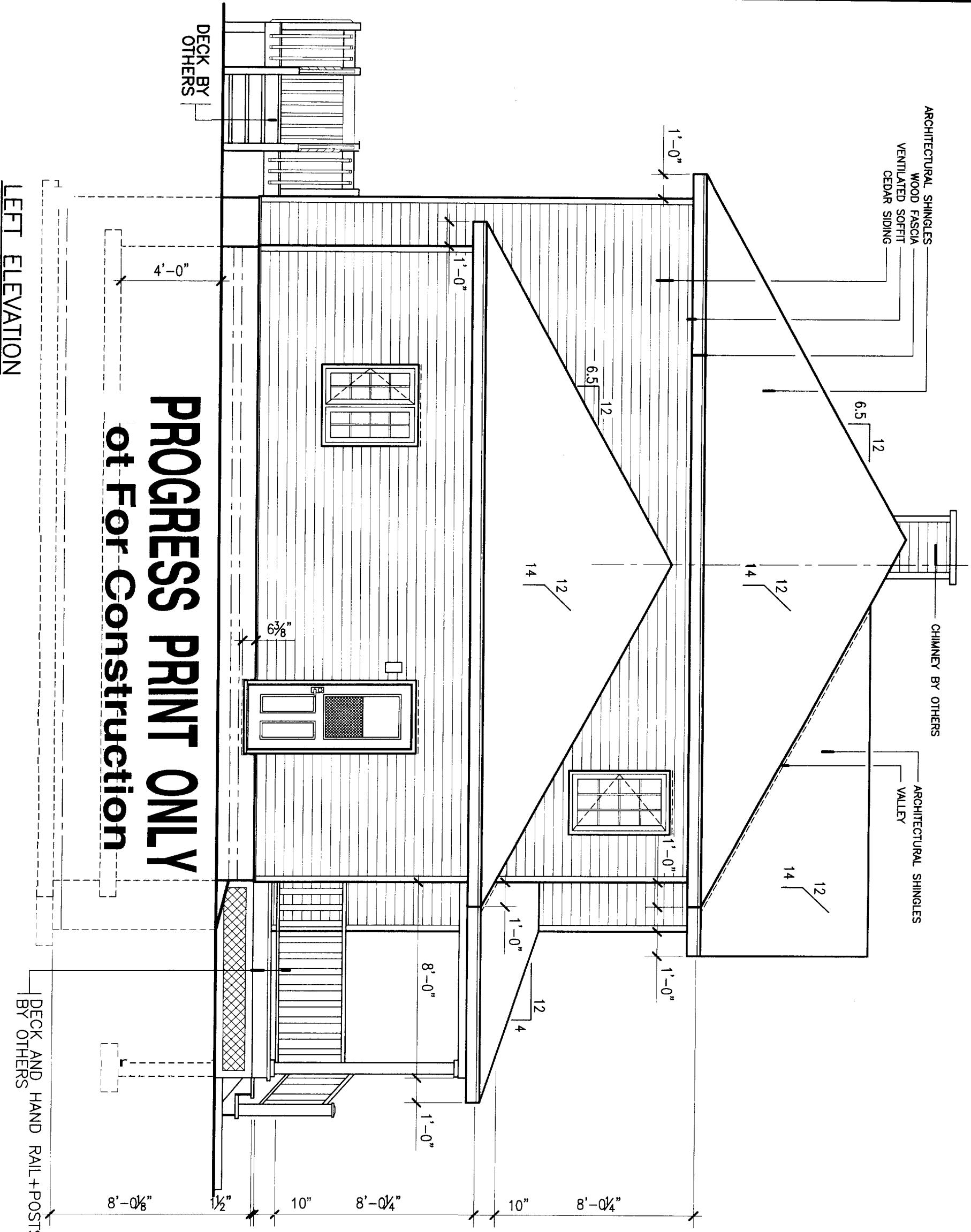
HABITEC 2000		ADVANCED QUALITY CUSTOM HOMES	
		JOCELYNE DERASPE	C- 00540
Scale: 1/4" = 1'-0"	Dr. by: S.C.	App. by:	Date: 11/23/2004
		Plan: REAR ELEVATION	Page: 5

NOTICE

THE CONTRACTOR SHOULD CAREFULLY VERIFY THE MEASUREMENTS AND DETAILS OF THE PLAN AND ADVISE "LES HABITATIONS TECHNIQUES LITE" OF ALL ERRORS AND LACK OF DETAILS BEFORE THE PRODUCTION OF HOUSES.

ALL REPRODUCTION IN TOTAL OR PARTIAL OF THESE PLANS IS STRICTLY PROHIBITED UNLESS A WRITTEN PERMISSION OF "LES HABITATIONS TECHNIQUES LITE".

ONLY "LES HABITATIONS TECHNIQUES LITE" HAS THE RIGHTS TO USE THESE PLANS FOR THE CONSTRUCTION OF HOUSES.

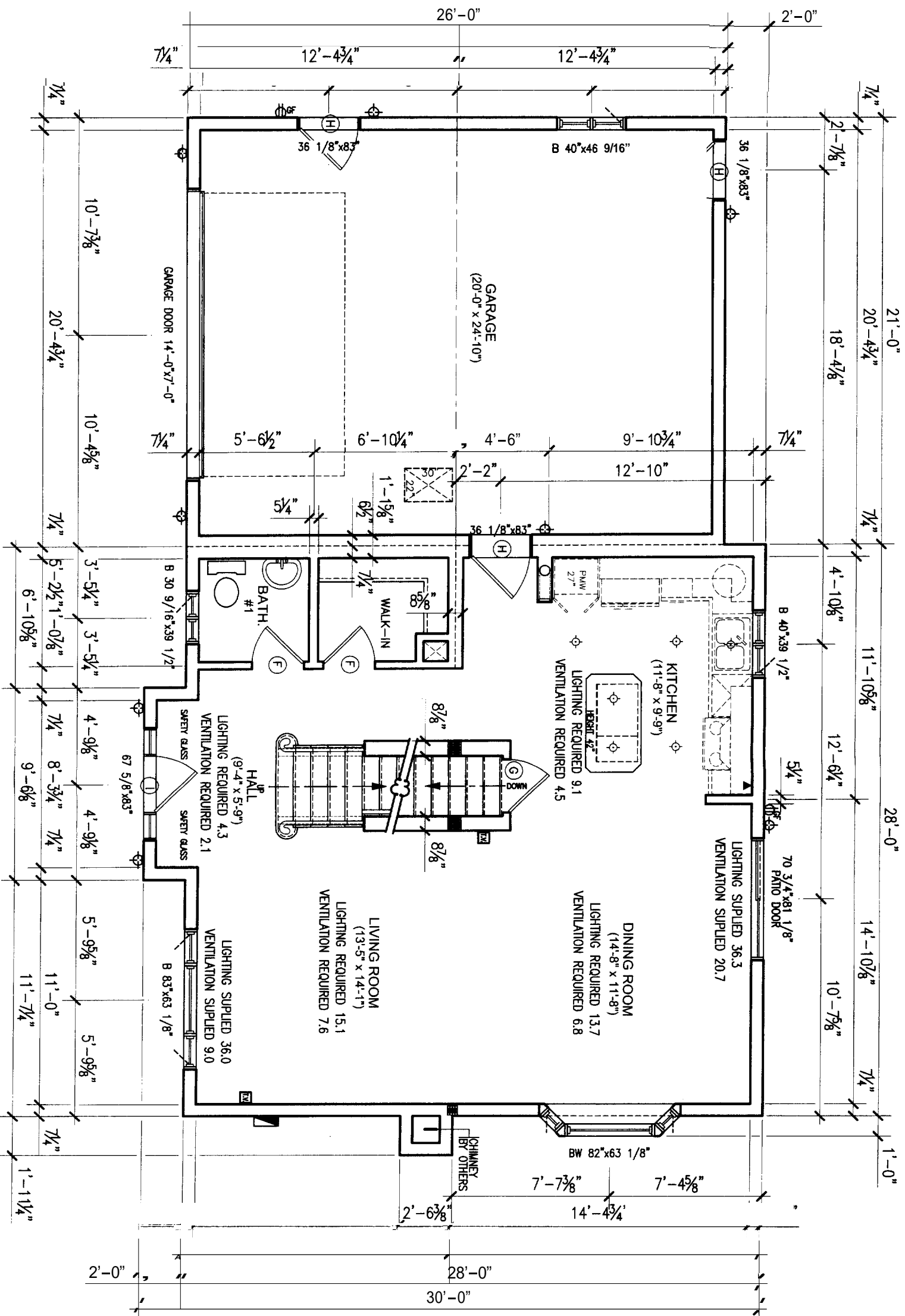


PROGRESS PRINT ONLY
of For Construction

LEFT ELEVATION

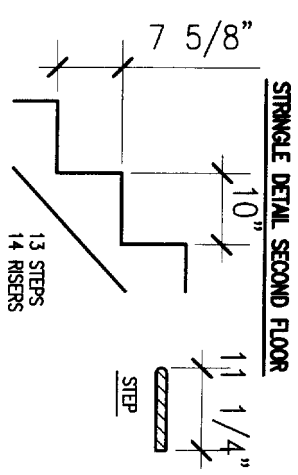
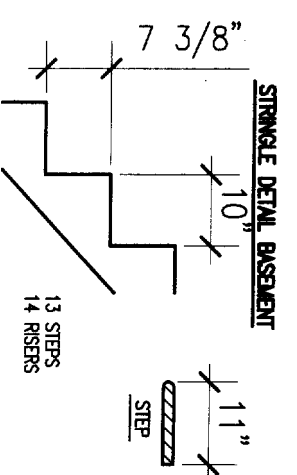
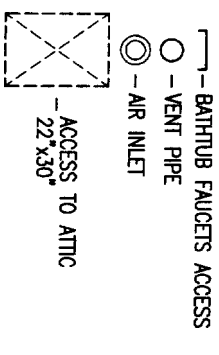
HABITEC 2000 ADVANCED QUALITY CUSTOM HOMES	
JOCELYNE DERASPE	C- 00540
Echelle: 1/4" = 1'-0"	Dessiné par: S.C.
Date: 11/23/2004	App. par: S.C.
Plan: LEFT ELEVATION	Page: 6

REVISION: 12/01/2004 BY: S.C.
 REVISION: 11/29/2004 BY: S.C.



PROGRESS PRINT ONLY
Not For Construction

SIMBLES



DOORS SCHEDULE

- (A) - 406mm. (16") (G) - 813mm. (32")
- (B) - 457mm. (18") (H) - 864mm. (34")
- (C) - 508mm. (20") (I) - 915mm. (36")
- (D) - 610mm. (24") (J) - 1219mm. (48")
- (E) - 711mm. (28") (K) - 1524mm. (60")
- (F) - 762mm. (30") (L) - 1829mm. (72")

FOR THE STATE OF MAINE, FOR BASEMENT HEIGHTS FROM 7'-3" TO 8'-0", BASEMENT STAIRS ARE A COMPONENT OF THIS DESIGN WITH A MAXIMUM RISER HEIGHT OF 8 1/4". A MINIMUM TREAD DEPTH OF 9" AND A 1" NOSING WILL BE PROVIDED ON ALL TREADS WITH TREAD WIDTH LESS THAN 16"

REVISION: 11/29/2004 BY: S.C.
 REVISION: 12/01/2004 BY: S.C.

HABITEC 2000

A.Q.I.H.

JOCELYNE DESRAPE C-00540

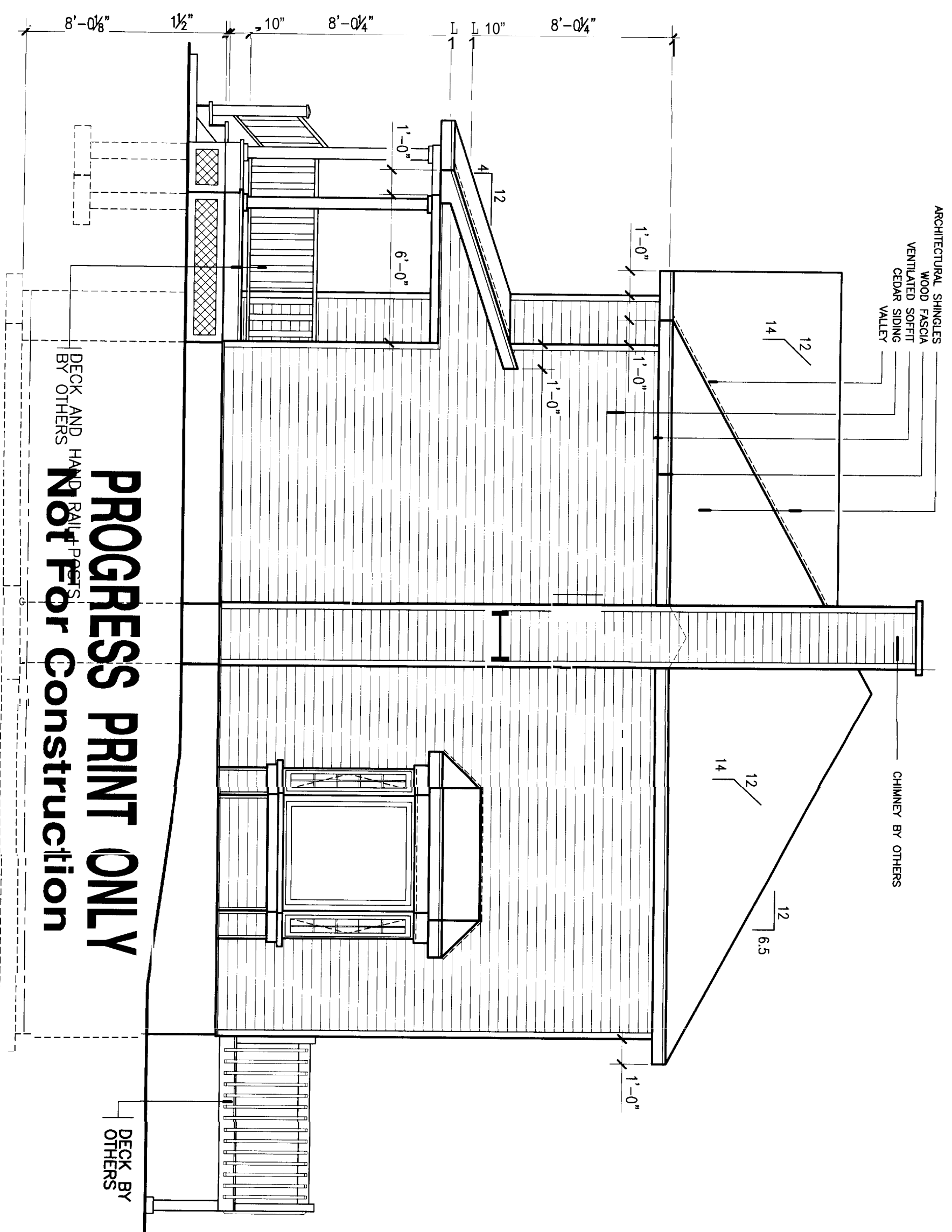
Echelle: 3/16"=1'-0"		Dessiné par: S.C.		App. par:	
Date: 11/23/2004	Plan: FIRST FLOOR			Page 7	

NOTICE

THE CONTRACTOR SHOULD CAREFULLY VERIFY THE MEASUREMENTS AND DETAILS OF THE PLAN AND ADVISE "LES HABITATIONS TECHNIQUES LITE" OF ALL ERRORS AND LACK OF DETAILS BEFORE THE PRODUCTION OF HOUSES.

ALL REPRODUCTION IN TOTAL OR PARTIAL OF THESE PLANS IS STRICTLY PROHIBITED UNLESS A WRITTEN PERMISSION OF "LES HABITATIONS TECHNIQUES LITE".

ONLY "LES HABITATIONS TECHNIQUES LITE" HAS THE RIGHTS TO USE THESE PLANS FOR THE CONSTRUCTION OF HOUSES.



RIGHT ELEVATION

PROGRESS PRINT ONLY
 Not For Construction

DECK BY OTHERS

DECK AND HAND RAILS BY OTHERS

ADVANCED QUALITY CUSTOM HOMES	
JOCELYNE DERASPE	
Echelle: 1/4"=1'-0"	Dessiné par: S.C.
Date: 11/23/2004	App. par:
Plan: RIGHT ELEVATION	Page: 4
C- 00540	

REVISION: 12/01/2004 BY: S.C.
 REVISION: 11/29/2004 BY: S.C.

NOTICE

THE CONTRACTOR SHOULD CAREFULLY VERIFY WE MEASUREMENTS AND DETAILS OF THE PLAN AND ADVISE "LES HABITATIONS TECHNIQUES LTEE" OF ALL ERRORS AND LACK OF DETAILS BEFORE THE PRODUCTION OF HOUSES.

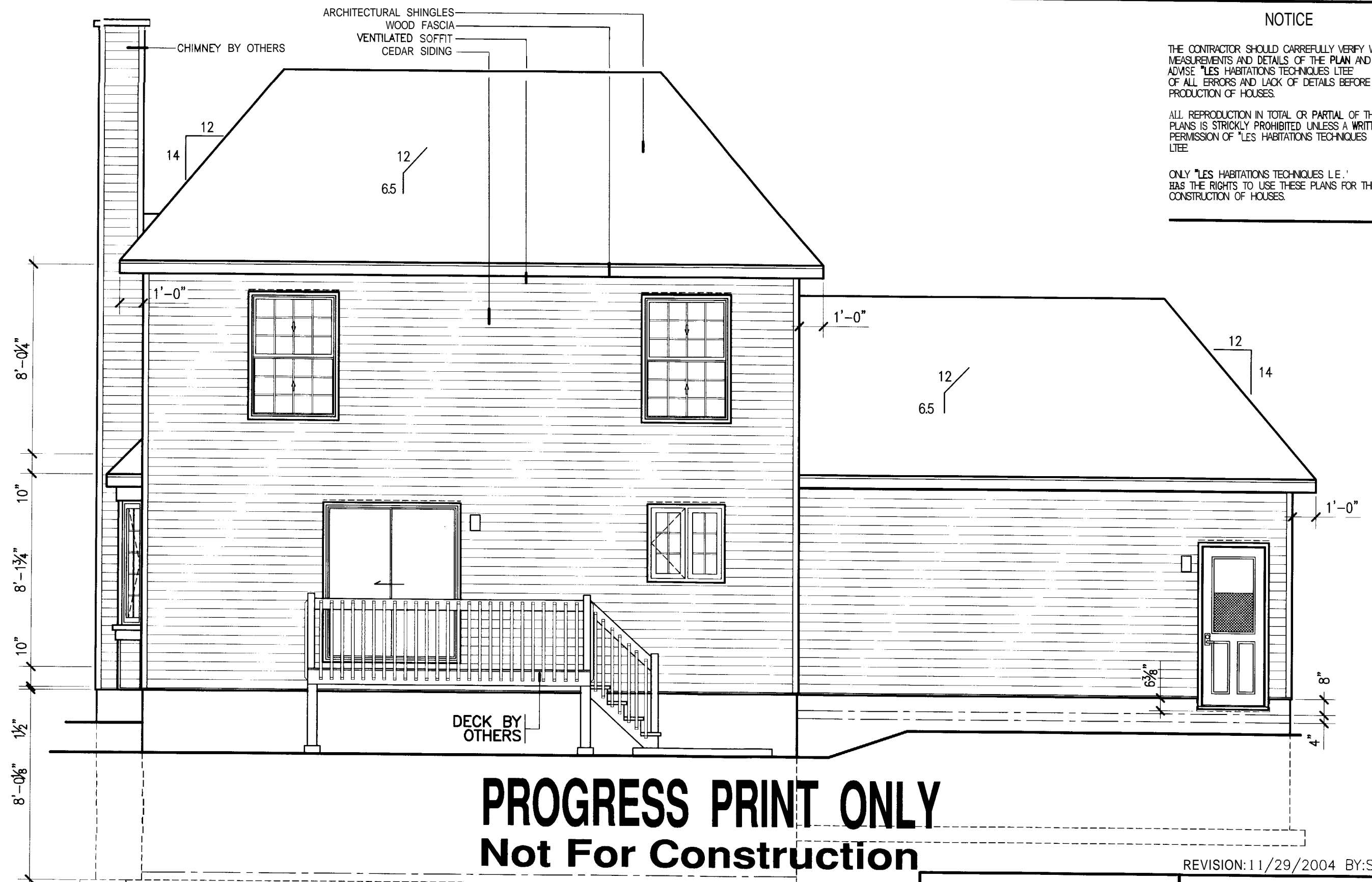
ALL REPRODUCTION IN TOTAL OR PARTIAL OF THESE PLANS IS STRICKLY PROHIBITED UNLESS A WRITTEN PERMISSION OF "LES HABITATIONS TECHNIQUES LTEE".

ONLY "LES HABITATIONS TECHNIQUES L.E." HAS THE RIGHTS TO USE THESE PLANS FOR THE CONSTRUCTION OF HOUSES.

- ARCHITECTURAL SHINGLES
- WOOD FASCIA
- VENTILATED SOFFIT
- CEDAR SIDING

CHIMNEY BY OTHERS

DECK BY OTHERS



PROGRESS PRINT ONLY
Not For Construction

REVISION: 11/29/2004 BY: S.C.

REAR ELEVATION

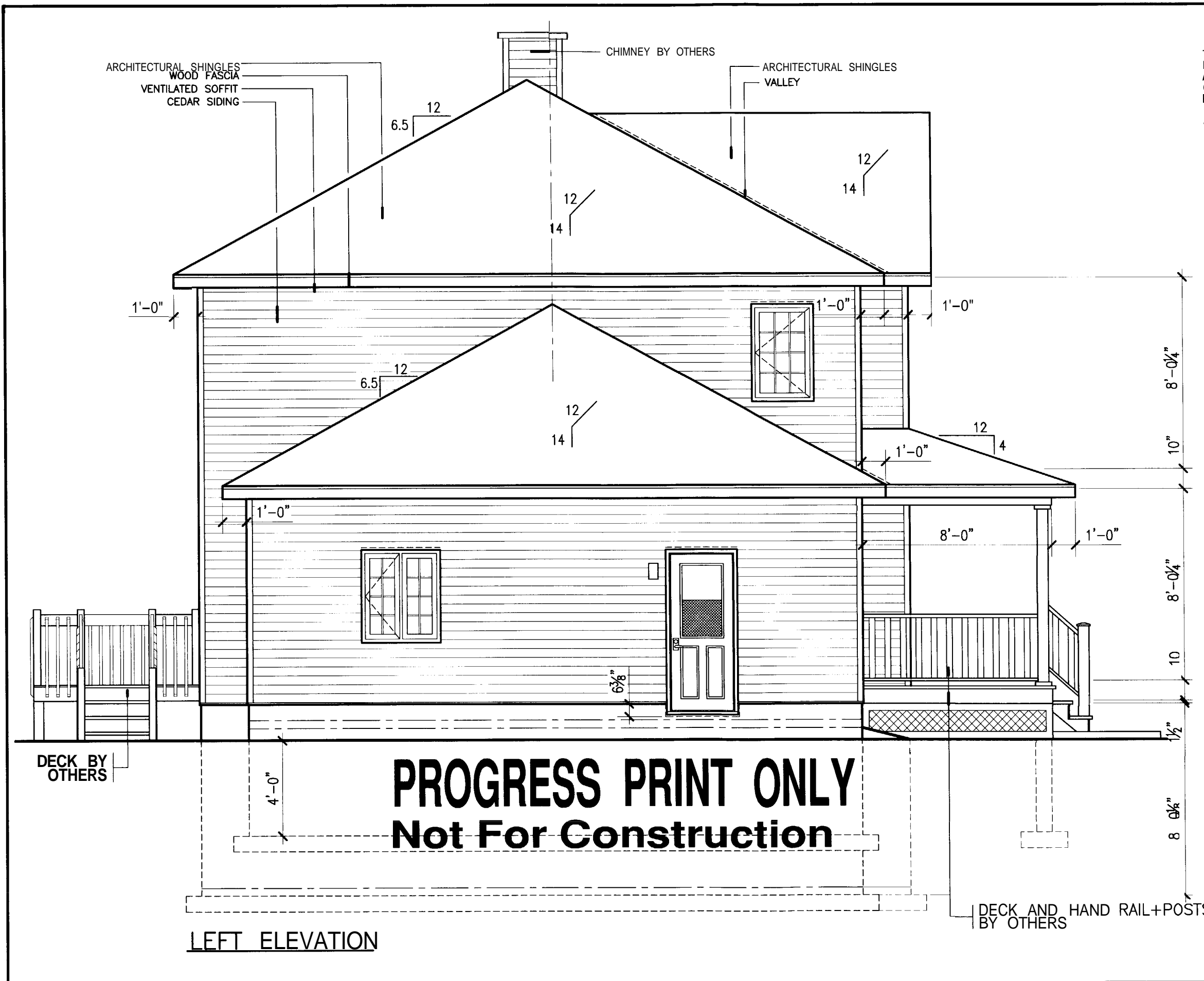
HABITEC 2000 ®		ADVANCED QUALITY CUSTOM HOMES	
Scale: 1/4" = 1'-0"		JOCELYNE DERASPE	
Dr. by: S.C.	App. by:	Date: 11/23/2004	Plan: REAR ELEVATION
		Page 5	

NOTICE

THE CONTRACTOR SHOULD CAREFULLY VERIFY THE MEASUREMENTS AND DETAILS OF THE PLAN AND ADVISE "LES HABITATIONS TECHNIQUES LTEE" OF ALL ERRORS AND LACK OF DETAILS BEFORE THE PRODUCTION OF HOUSES.

ALL REPRODUCTION IN TOTAL OR PARTIAL OF THESE PLANS IS STRICTLY PROHIBITED UNLESS A WRITTEN PERMISSION FROM "LES HABITATIONS TECHNIQUES LTEE" IS OBTAINED.

ONLY "LES HABITATIONS TECHNIQUES LTEE" HAS THE RIGHTS TO USE THESE PLANS FOR THE CONSTRUCTION OF HOUSES.



PROGRESS PRINT ONLY
Not For Construction

LEFT ELEVATION

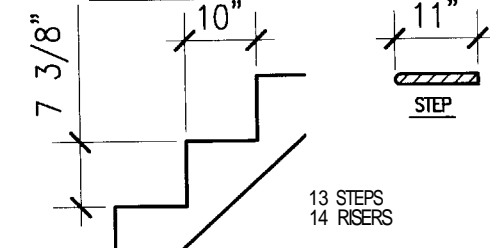
REVISION: 12/01/2004 BY: S.C.
 REVISION: 11/29/2004 BY: S.C.

HABITEC 2000 [®]		
ADVANCED QUALITY CUSTOM HOMES		
JOCELYNE DERASPE		C- 00540
Echelle: 1/4"=1'-0"	Dessiné par: S.C.	App. par:
Date: 11/23/2004	Plan: LEFT ELEVATION	Page 6

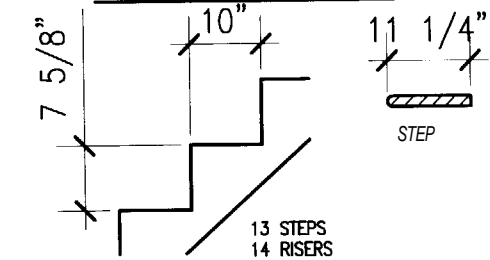
SYMBOLS

- PATH/TUB FAUCETS ACCESS
- - VENT PIPE
- ⊙ - AIR INLET
- ⊠ - ACCESS TO ATTIC 22"x30"

STRINGER DETAIL BASEMENT



STRINGER DETAIL SECOND FLOOR



DOORS SCHEDULE

- (A) - 406mm. (16")
- (B) - 457mm. (18")
- (C) - 508mm. (20")
- (D) - 610mm. (24")
- (E) - 711mm. (28")
- (F) - 762mm. (30")
- (G) - 813mm. (32")
- (H) - 864mm. (34")
- (I) - 915mm. (36")
- (J) - 1219mm. (48")
- (K) - 1524mm. (60")
- (L) - 1829mm. (72")

FOR THE STATE OF MAINE, FOR BASEMENT HEIGHTS FROM 7'-3" TO 8'-0", BASEMENT STAIRS ARE A COMPONENT OF THIS DESIGN WITH A MAXIMUM RISER HEIGHT OF 8 1/4"; A MINIMUM TREAD DEPTH OF 9" AND A 1" NOSING WILL BE PROVIDED ON ALL TREADS WITH TREAD WIDTH LESS THAN 1'

REVISION: 11/29/2004 BY: S.C.
REVISION: 12/01/2004 BY: S.C.

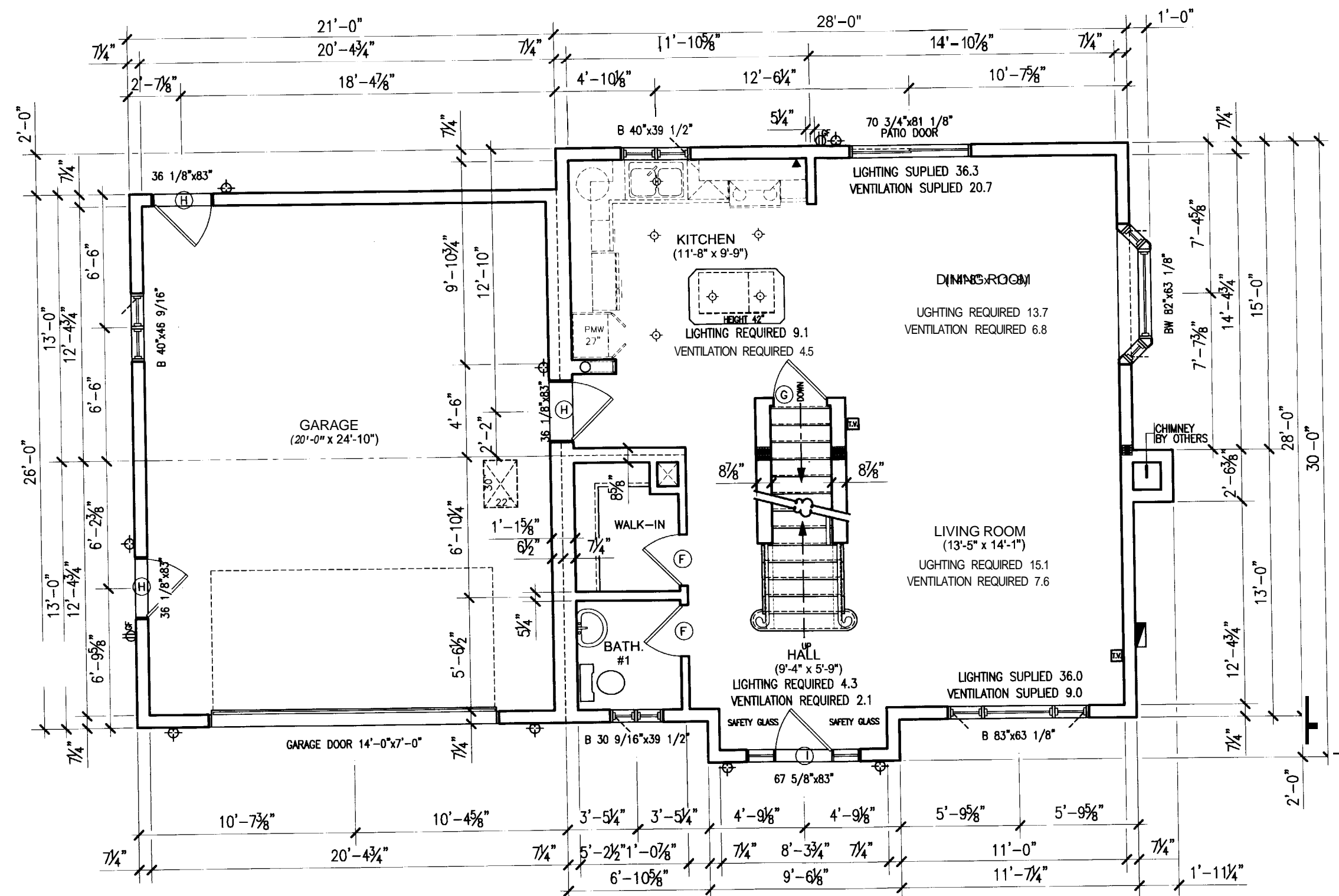
HABITEC 2000®

A.Q.M.H.

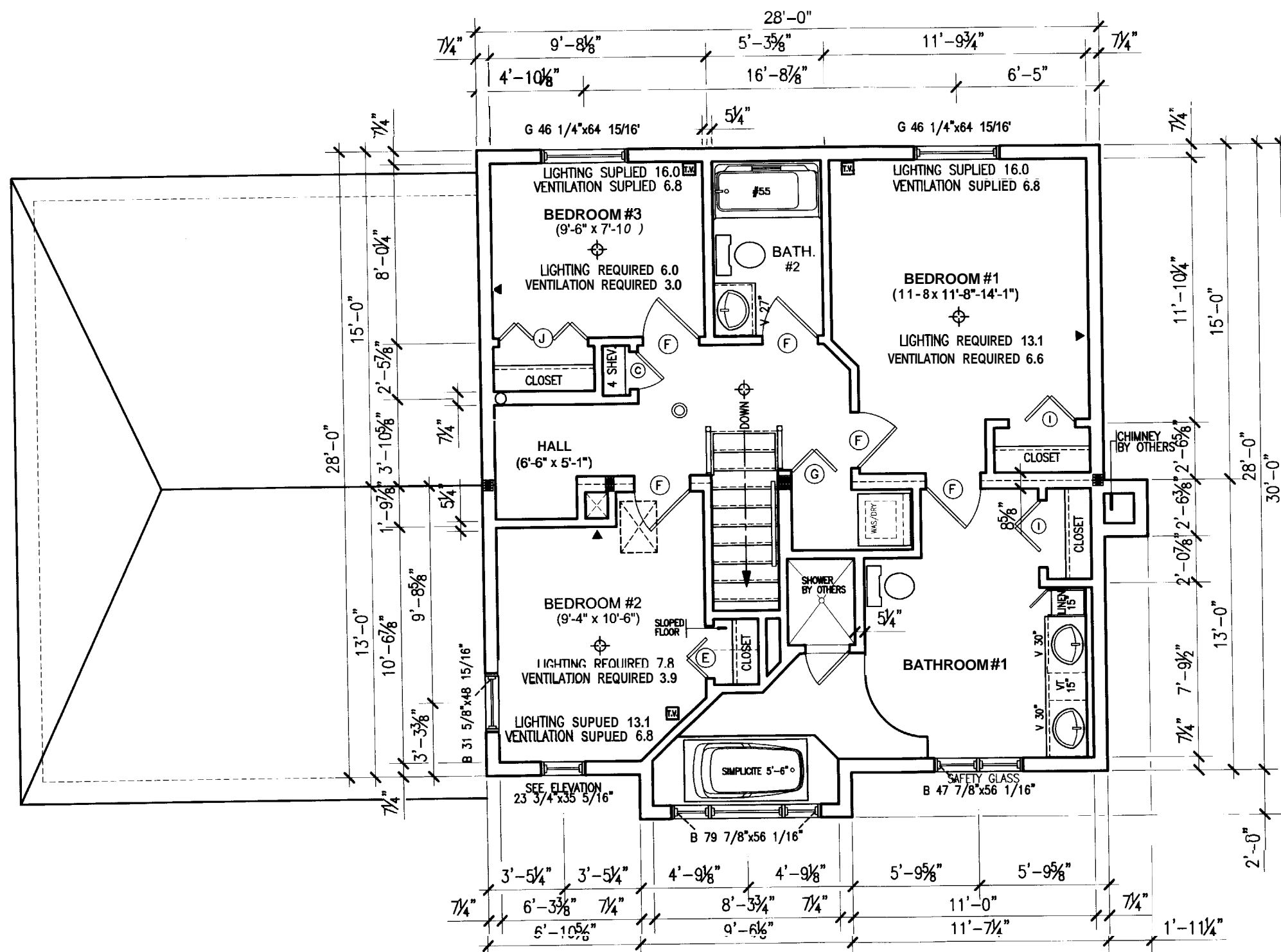
JOCELYNE DESRAPE

C- 00540

Échelle: 3/16"=1'-0"	Dessiné par: S.C.	App. par:
Date: 11/23/2004	Plan: FIRST FLOOR	Page 7



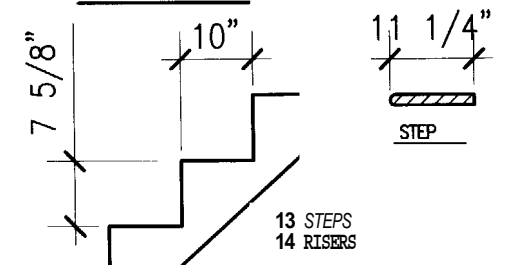
PROGRESS PRINT ONLY
Not For Construction



SYMBOLS

- BATHUB FAUCETS ACCESS
- - VENT PIPE
- ⊙ - AIR INLET
- ⊠ - ACCESS TO ATTIC 22"x30"

STRINGLE DETAIL



DOORS SCHEDULE

- | | |
|--------------------|---------------------|
| (A) - 406mm. (16") | (G) - 813mm. (32") |
| (B) - 457mm. (18") | (H) - 864mm. (34") |
| (C) - 508mm. (20") | (I) - 915mm. (36") |
| (D) - 610mm. (24") | (J) - 1219mm. (48") |
| (E) - 711mm. (28") | (K) - 1524mm. (60") |
| (F) - 762mm. (30") | (L) - 1829mm. (72") |

FOR THE STATE OF MAINE, FOR BASEMENT HEIGHTS FROM 7'-3" TO 8'-0", BASEMENT STAIRS ARE A COMPONENT OF THIS DESIGN WITH A MAXIMUM RISER HEIGHT OF 8 1/4". A MINIMUM TREAD DEPTH OF 9" AND A 1" NOSING WILL BE PROVIDED ON ALL TREADS WITH TREAD WIDTH LESS THAN 1

REVISION: 12/01/2004 BY: S.C.
 REVISION: 11/29/2004 BY: S.C.

HABITEC 2000

ADVANCED QUALITY CUSTOM HOMES

JOCELYNE DERASPE		C- 00540
Echelle: 3/16"=1'-0"	Dessiné par: S.C.	App. par:
Date: 7/23/2004	Plan: SECOND FLOOR	Page 8

PROGRESS PRINT ONLY
Not For Construction