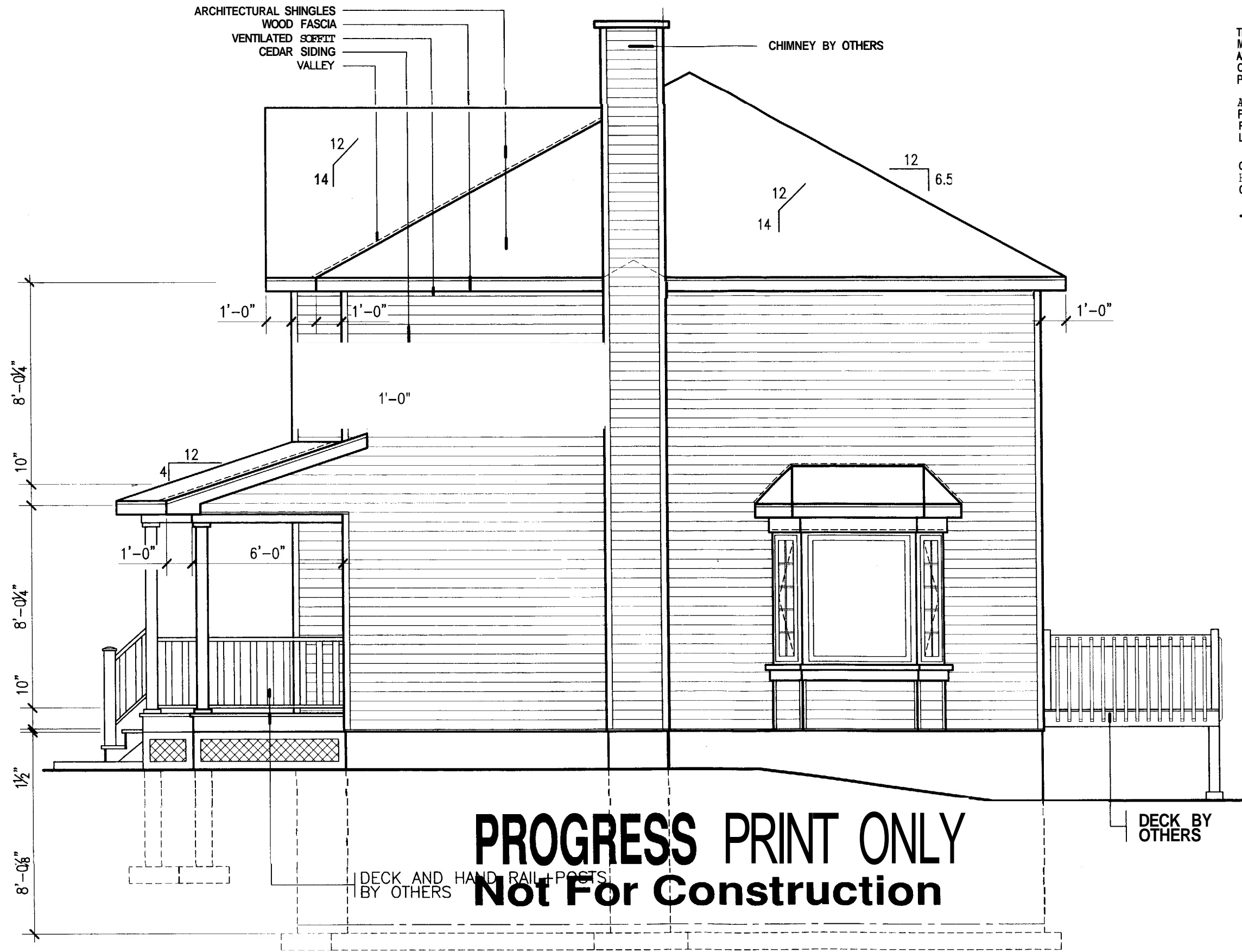


NOTICE

THE CONTRACTOR SHOULD CAREFULLY VERIFY THE MEASUREMENTS AND DETAILS OF THE PLAN AND ADVISE "LES HABITATIONS TECHNIQUES LTEE" OF ALL ERRORS AND LACK OF DETAILS BEFORE THE PRODUCTION OF HOUSES.

ALL REPRODUCTION IN TOTAL OR PARTIAL OF THESE PLANS IS STRICTLY PROHIBITED UNLESS A WRITTEN PERMISSION OF "LES HABITATIONS TECHNIQUES LTEE".

ONLY "LES HABITATIONS TECHNIQUES LTEE." HAS THE RIGHTS TO USE THESE PLANS FOR THE CONSTRUCTION OF HOUSES.



PROGRESS PRINT ONLY
Not For Construction

RIGHT ELEVATION

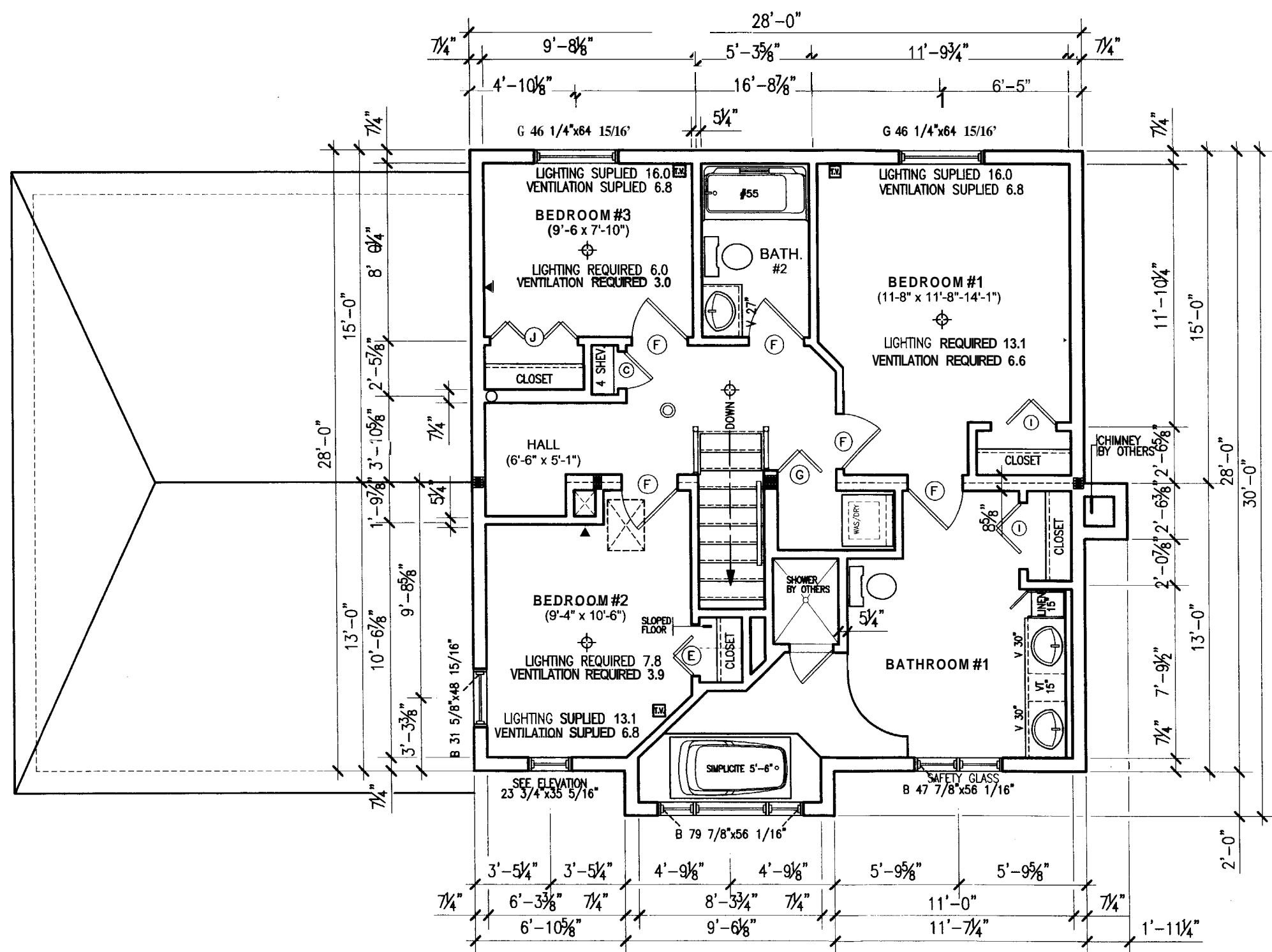
REVISION: 12/01/2004 BY: S.C.
 REVISION: 11/29/2004 BY: S.C.

HABITEC 2000®

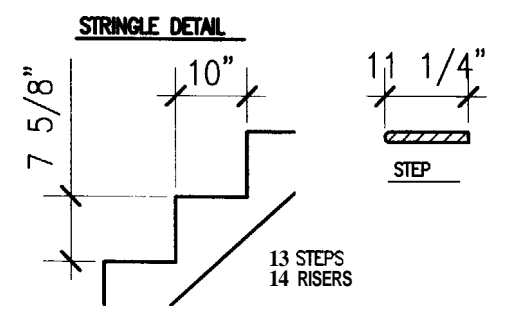
ADVANCED QUALITY CUSTOM HOMES

JOCELYNE DERASPE | C- 00540

Scale: 1/4" = 1'-0"	Dessiné par: S.C.	App. par:
Date: 11/23/2004	Plan: RIGHT ELEVATION	Page 4



- SYMBOLS**
- ┌──┐ BATHUB FAUCETS ACCESS
 - VENT PIPE
 - ⊙ AIR INLET
 - ▭ ACCESS TO ATTIC
 - ▭ 22"x30"



DOORS SCHEDULE

(A) - 406mm. (16")	(G) - 813mm. (32")
(B) - 457mm. (18")	(H) - 864mm. (34")
(C) - 508mm. (20")	(I) - 915mm. (36")
(D) - 610mm. (24")	(J) - 1219mm. (48")
(E) - 711mm. (28")	(K) - 1524mm. (60")
(F) - 762mm. (30")	(L) - 1829mm. (72")

FOR THE STATE OF MAINE, FOR BASEMENT HEIGHTS FROM 7'-3" TO 8'-0", BASEMENT STAIRS ARE A COMPONENT OF MIS DESIGN WITH A MAXIMUM RISER HEIGHT OF 8 1/4"; A MINIMUM TREAD DEPTH OF 9" AND A 1" NOSING WILL BE PROVIDED ON ALL TREADS WITH TREAD WIDTH LESS THAN 10"

REVISION: 12/01 /2004 BY: S.C.
 REVISION: 11/29/2004 BY: S.C.

HABITEC 2000®

ADVANCED QUALITY CUSTOM HOMES

JOCELYNE DERASPE C- 00540

Échelle: 3/16"=1'-0"	Dessiné par: S.C.	App. par:
Date: 11/23/2004	Plan: SECOND FLOOR	Page 8

PROGRESS PRINT ONLY
Not For Construction