

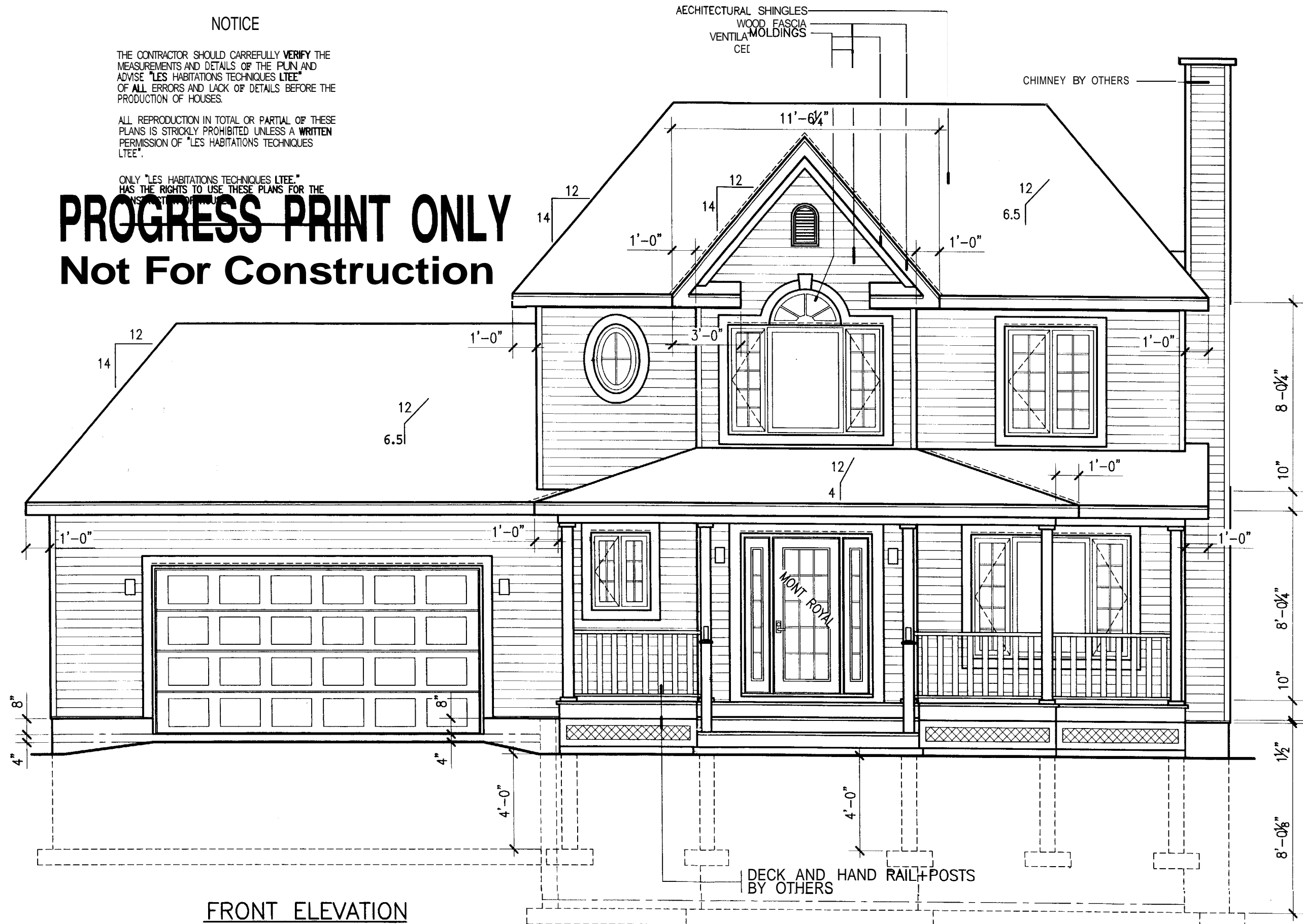
NOTICE

THE CONTRACTOR SHOULD CAREFULLY VERIFY THE MEASUREMENTS AND DETAILS OF THE PLAN AND ADVISE "LES HABITATIONS TECHNIQUES LTEE" OF ALL ERRORS AND LACK OF DETAILS BEFORE THE PRODUCTION OF HOUSES.

ALL REPRODUCTION IN TOTAL OR PARTIAL OF THESE PLANS IS STRICKLY PROHIBITED UNLESS A WRITTEN PERMISSION OF "LES HABITATIONS TECHNIQUES LTEE".

ONLY "LES HABITATIONS TECHNIQUES LTEE" HAS THE RIGHTS TO USE THESE PLANS FOR THE CONSTRUCTION OF HOUSES.

PROGRESS PRINT ONLY
Not For Construction



FRONT ELEVATION

REVISION: 12/01/2004 BY: S.C.
 REVISION: 11/29/2004 BY: S.C.

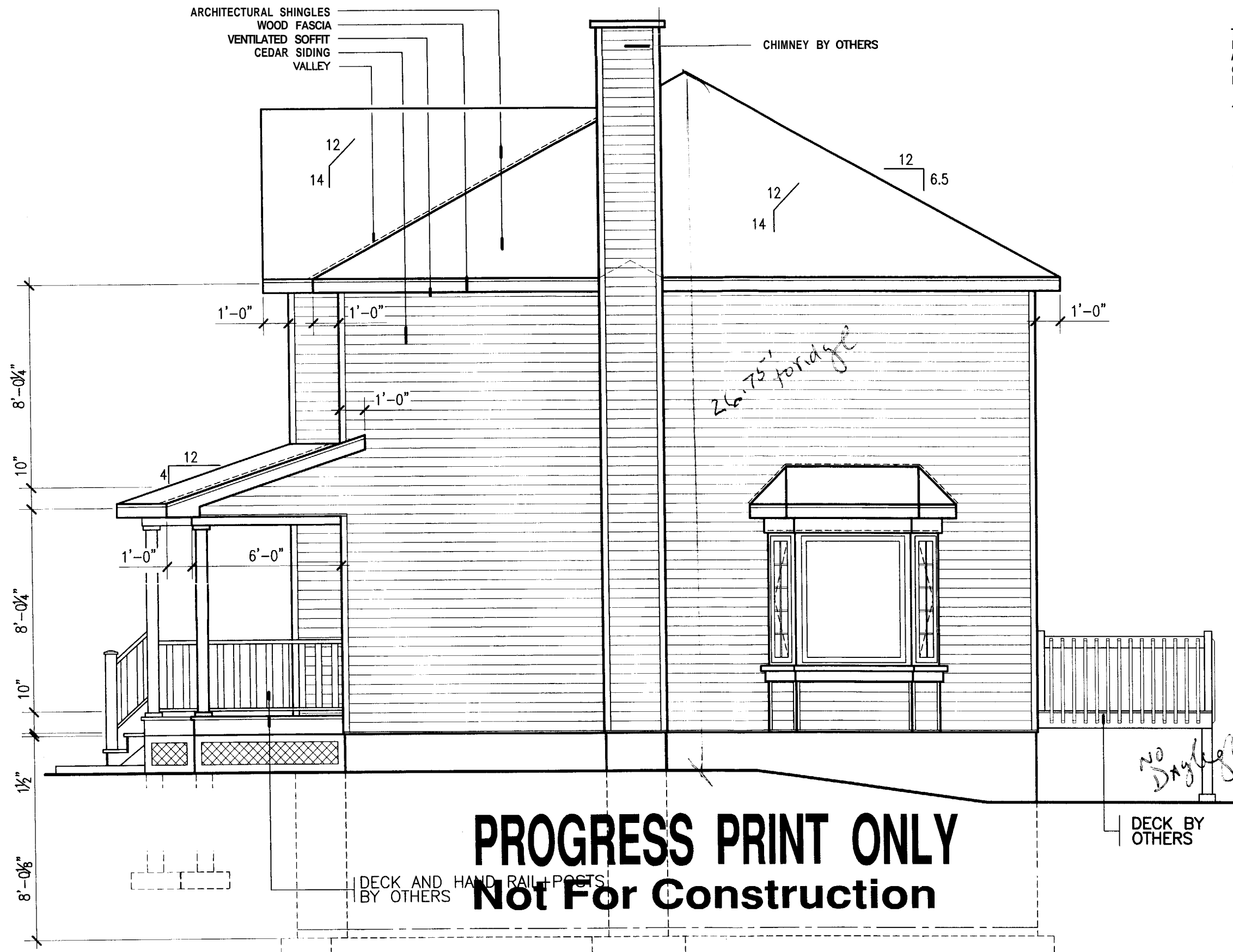
| | | |
|--|---|-----------------------|
| | ADVANCED QUALITY CUSTOM HOMES JOCELYNE DERASPE | C- 00540 Page 3 |
| | Date: 11/29/2004 App. by: C.C. | Plan: FRONT ELEVATION |

NOTICE

THE CONTRACTOR SHOULD CAREFULLY VERIFY THE MEASUREMENTS AND DETAILS OF THE PLAN AND ADVISE "LES HABITATIONS TECHNIQUES LTEE" OF ALL ERRORS AND LACK OF DETAILS BEFORE THE PRODUCTION OF HOUSES.

ALL REPRODUCTION IN TOTAL OR PARTIAL OF THESE PLANS IS STRICTLY PROHIBITED UNLESS A WRITTEN PERMISSION OF "LES HABITATIONS TECHNIQUES LTEE".

ONLY "LES HABITATIONS TECHNIQUES LTEE." HAS THE RIGHTS TO USE THESE PLANS FOR THE CONSTRUCTION OF HOUSES.



PROGRESS PRINT ONLY
Not For Construction

RIGHT ELEVATION

DECK BY OTHERS

DECK AND HAND RAIL + POSTS BY OTHERS

26.75' for ridge

No Daylight

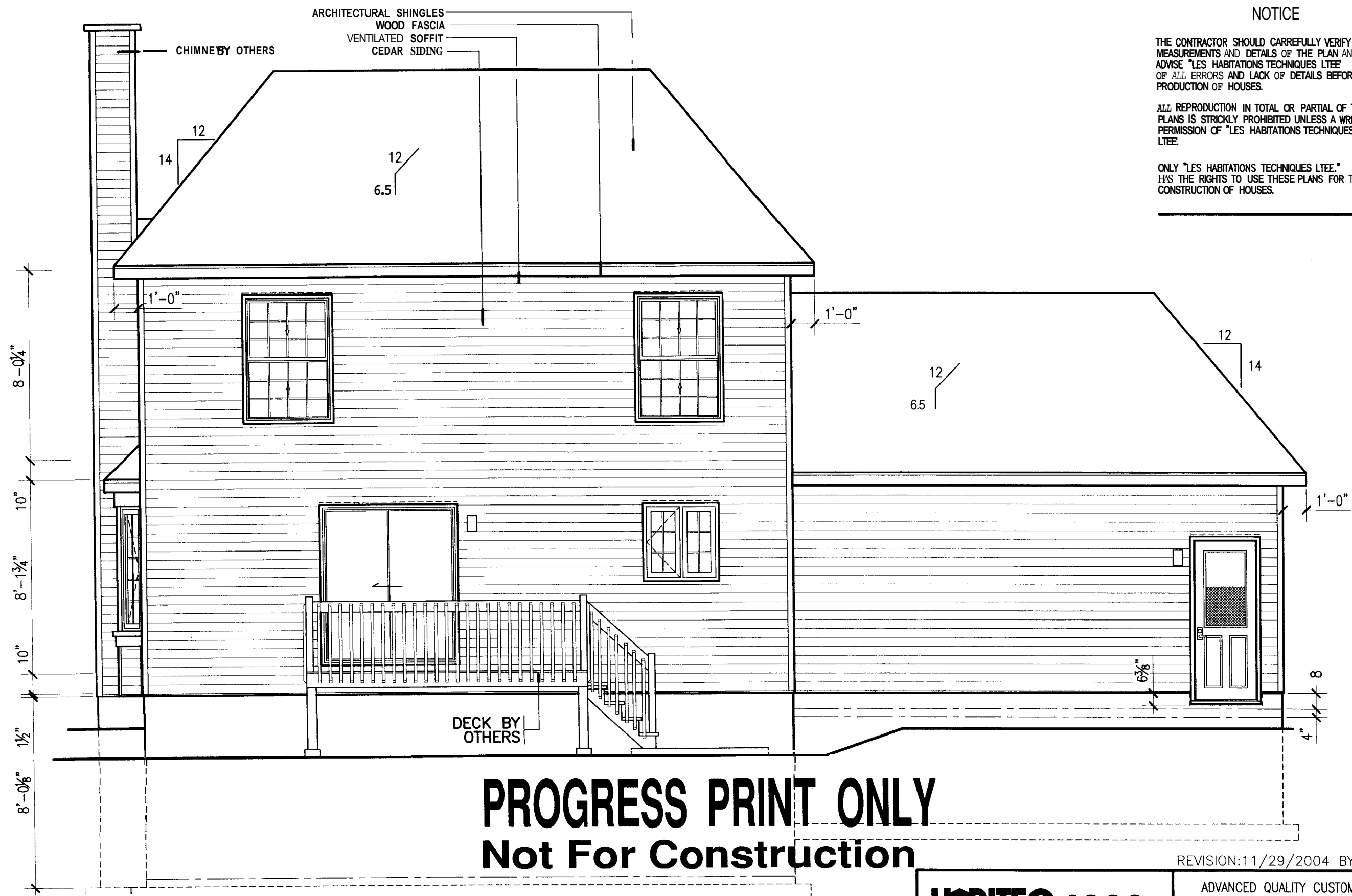
| | | |
|-------------------------|-------------------------|-----------|
| JOCELYNE DERASPE | | C- 00540 |
| Échelle 1/4" = 1'-0" | Dessiné par SC | App par |
| Date 11/23/2004 | Plan RIGHT ELEVATION | Page 4 |

NOTICE

THE CONTRACTOR SHOULD CAREFULLY VERIFY THE MEASUREMENTS AND DETAILS OF THE PLAN AND ADVISE "LES HABITATIONS TECHNIQUES LTEE" OF ALL ERRORS AND LACK OF DETAILS BEFORE THE PRODUCTION OF HOUSES.

ALL REPRODUCTION IN TOTAL OR PARTIAL OF THESE PLANS IS STRICTLY PROHIBITED UNLESS A WRITTEN PERMISSION OF "LES HABITATIONS TECHNIQUES LTEE".

ONLY "LES HABITATIONS TECHNIQUES LTEE." HAS THE RIGHTS TO USE THESE PLANS FOR THE CONSTRUCTION OF HOUSES.



PROGRESS PRINT ONLY
Not For Construction

REAR ELEVATION

REVISION: 11/29/2004 BY: S.C.

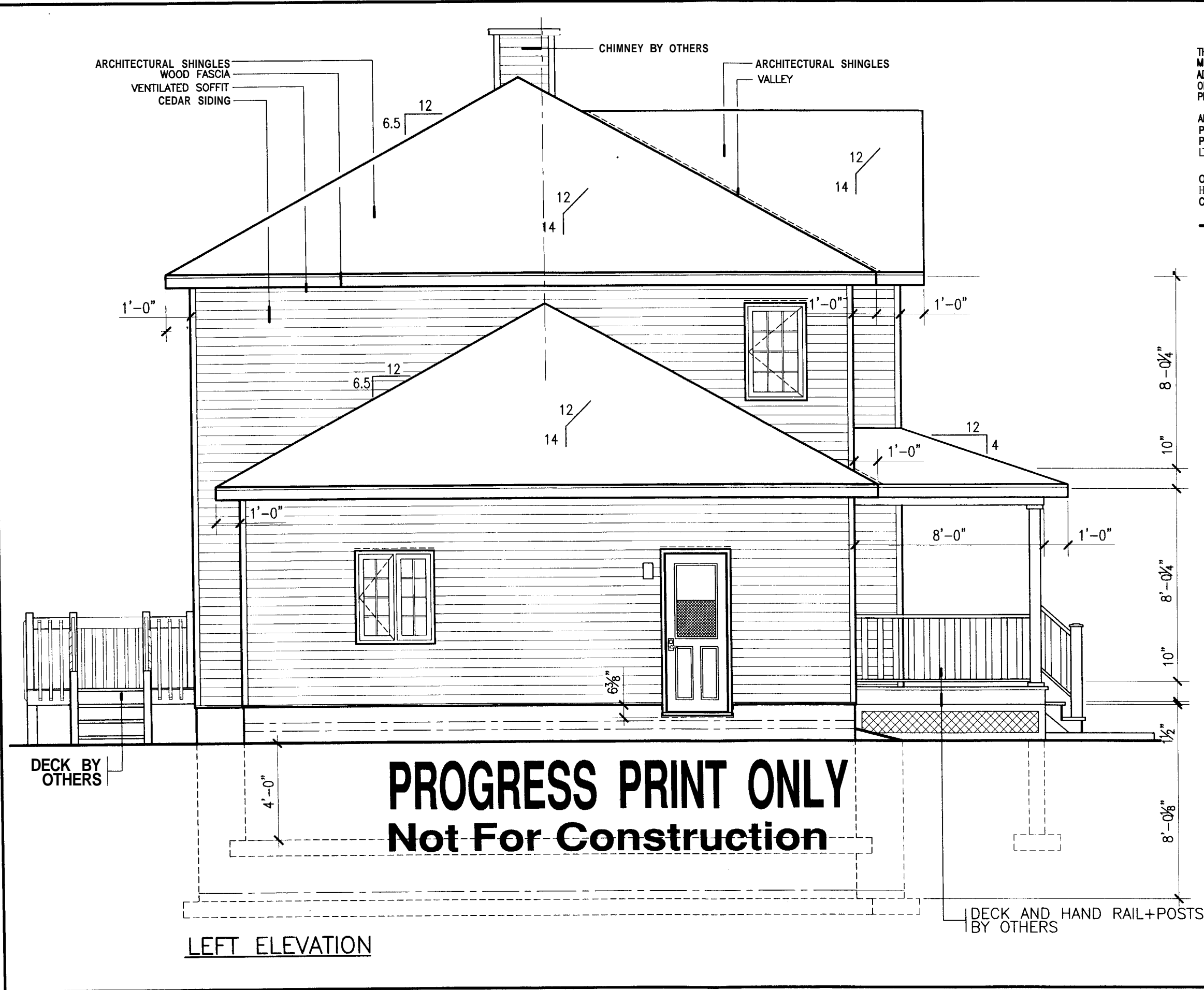
| | | | | |
|-----------------------|-----------------|-------------------------------|---------------------|--------------------------------|
| HABITEC 2000 ® | | ADVANCED QUALITY CUSTOM HOMES | | |
| | | JOCELYNE DERASPE | | C- 00540 |
| Scale: 1/4"=1'-0" | Dr. by: S.C. | App. by: | Date: 11/23/2004 | Plan: REAR ELEVATION |
| | | | | Page 5 |

NOTICE

THE CONTRACTOR SHOULD CAREFULLY VERIFY THE MEASUREMENTS AND DETAILS OF THE PLAN AND ADVISE "LES HABITATIONS TECHNIQUES LTEE" OF ALL ERRORS AND LACK-OF DETAILS BEFORE THE PRODUCTION OF HOUSES.

ALL REPRODUCTION IN TOTAL OR PARTIAL OF THESE PLANS IS STRICTLY PROHIBITED UNLESS A WRITTEN PERMISSION OF "LES HABITATIONS TECHNIQUES LTEE"

ONLY "LES HABITATIONS TECHNIQUES LTEE." HAS THE RIGHTS TO USE THESE PLANS FOR THE CONSTRUCTION OF HOUSES.



PROGRESS PRINT ONLY
Not For Construction

LEFT ELEVATION

REVISION: 12/01 /2004 BY:S.C.
 REVISION: 11/29/2004 BY:S.C.

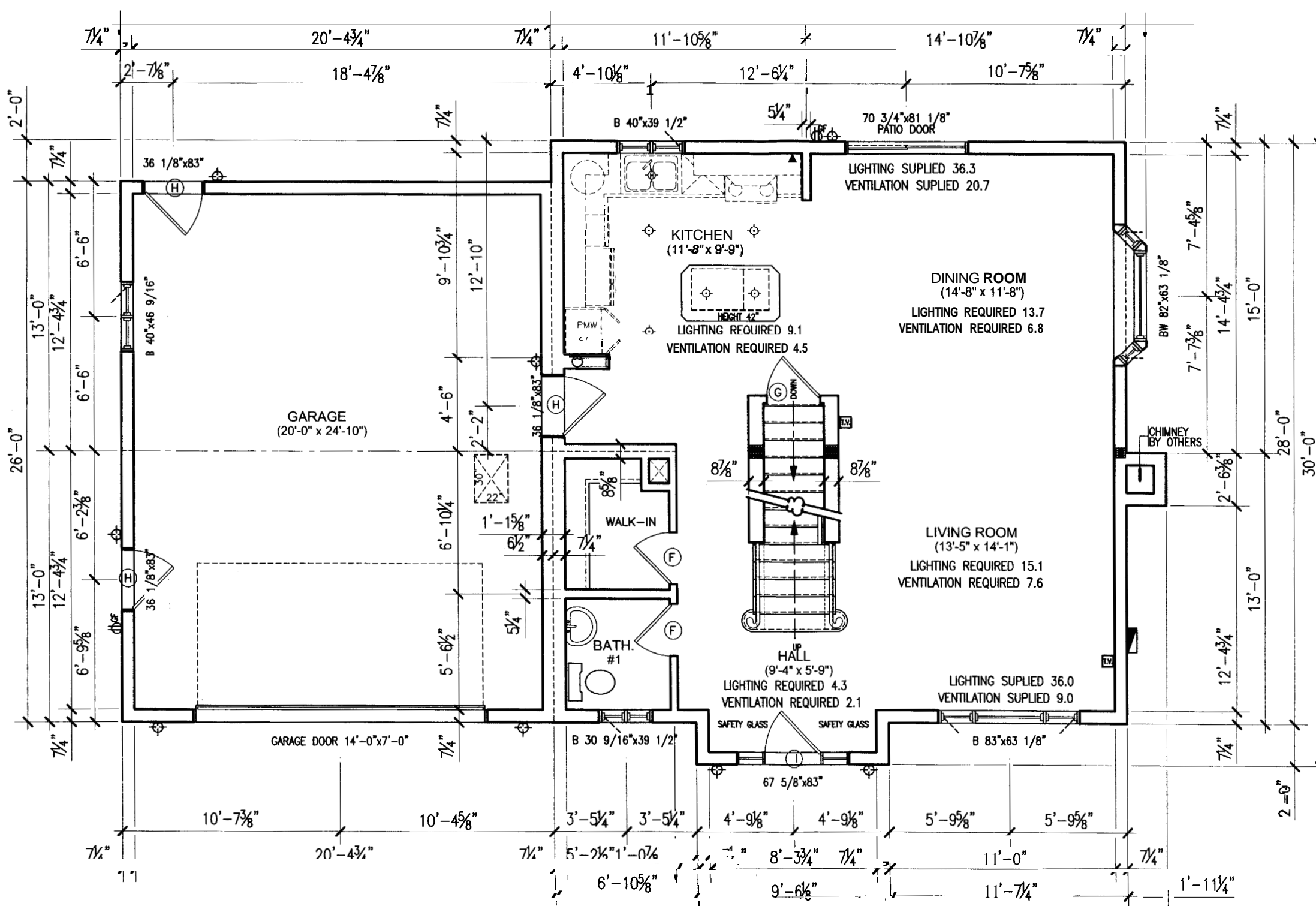
HABITEC 2000[®]

ADVANCED QUALITY CUSTOM HOMES

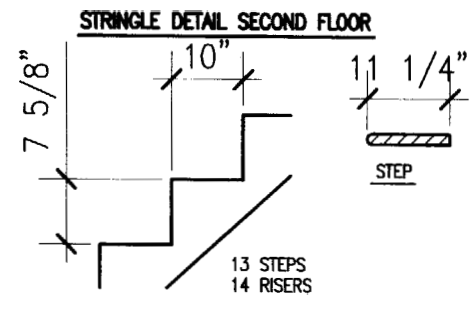
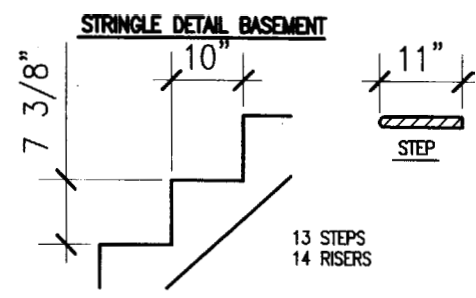
JOCELYNE DERASPE

C- 00540

| | | |
|------------------------|-------------------------|-----------|
| Échelle: 1/4"=1'-0" | Dessiné par: S.C. | App. par: |
| Date: 11/23/2004 | Plan: LEFT ELEVATION | Page 6 |



- SYMBOLS**
- ⌊ — BATHTUB FAUCETS ACCESS
 - — VENT PIPE
 - ⊙ — AIR INLET
 - ⊠ — ACCESS TO ATTIC 22"x30"



- DOORS SCHEDULE**
- | | |
|--------------------|---------------------|
| (A) - 406mm. (16") | (G) - 813mm. (32") |
| (B) - 457mm. (18") | (H) - 864mm. (34") |
| (C) - 508mm. (20") | (I) - 915mm. (36") |
| (D) - 610mm. (24") | (J) - 1219mm. (48") |
| (E) - 711mm. (28") | (K) - 1524mm. (60") |
| (F) - 762mm. (30") | (L) - 1829mm. (72") |

FOR THE STATE OF MAINE, FOR BASEMENT HEIGHTS FROM 7'-3" TO 8'-0", BASEMENT STAIRS ARE A COMPONENT OF THIS DESIGN WITH A MAXIMUM RISER HEIGHT OF 8 1/4"; A MINIMUM TREAD DEPTH OF 9" AND A 1" NOSING WILL BE PROVIDED ON ALL TREADS WITH TREAD WIDTH LESS THAN 10"

REVISION: 11/29/2004 BY: S.C.
REVISION: 12/01/2004 BY: S.C.

HABITEC 2000

A.Q.M.H.

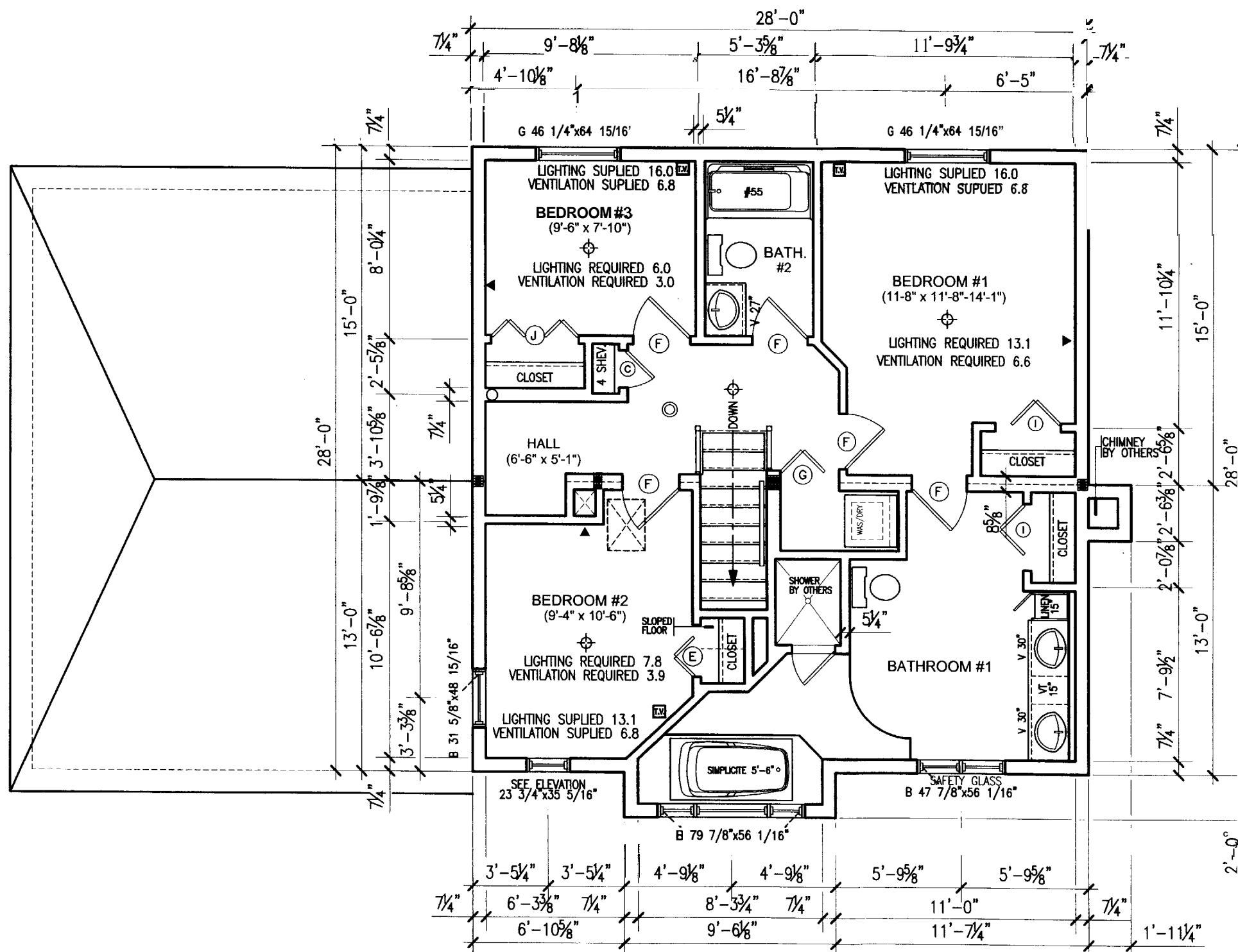
JOCELYNE DESRAPE

C- 00540

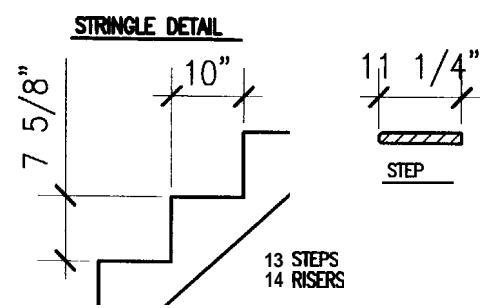
Echelle: 3/16" = 1'-0" Dessiné par: App. par:

Date: 11, 23, 2004 FLOOR 7

PROGRESS PRINT ONLY
Not For Construction



- SYMBOLS**
- ┌──┐ BATHUB FAUCETS ACCESS
 - VENT PIPE
 - ⊙ AIR INLET
 - ▭ ACCESS TO ATTIC
 - ▭ 22"x30"



- DOORS SCHEDULE**
- (A) - 406mm. (16")
 - (B) - 457mm. (18")
 - (C) - 508mm. (20")
 - (D) - 610mm. (24")
 - (E) - 711mm. (28")
 - (F) - 762mm. (30")
 - (G) - 813mm. (32")
 - (H) - 864mm. (34")
 - (I) - 915mm. (36")
 - (J) - 1219mm. (48")
 - (K) - 1524mm. (60")
 - (L) - 1829mm. (72")

FOR THE STATE OF MAINE, FOR BASEMENT HEIGHTS FROM 7'-3" TO 8'-0", BASEMENT STAIRS ARE A COMPONENT OF THIS DESIGN WITH A MAXIMUM RISER HEIGHT OF 8 1/4". A MINIMUM TREAD DEPTH OF 9" AND A 1" NOSING WILL BE PROVIDED ON ALL TREADS WITH TREAD WIDTH LESS THAN 10"

REVISION: 12/01/2004 BY: S.C.
 REVISION: 11/29/2004 BY: S.C.

HABITEC 2000®

ADVANCED QUALITY CUSTOM HOMES

| | | |
|-------------------------|---------------------------|---------------|
| JOCELYNE DERASPE | | C- 00540 |
| Échelle: 3/16"=1'-0" | Dessiné par: S.C. | App. par: |
| Date: 11/23/2004 | Plan: SECOND FLOOR | Page 8 |

PROGRESS PRINT ONLY
Not For Construction

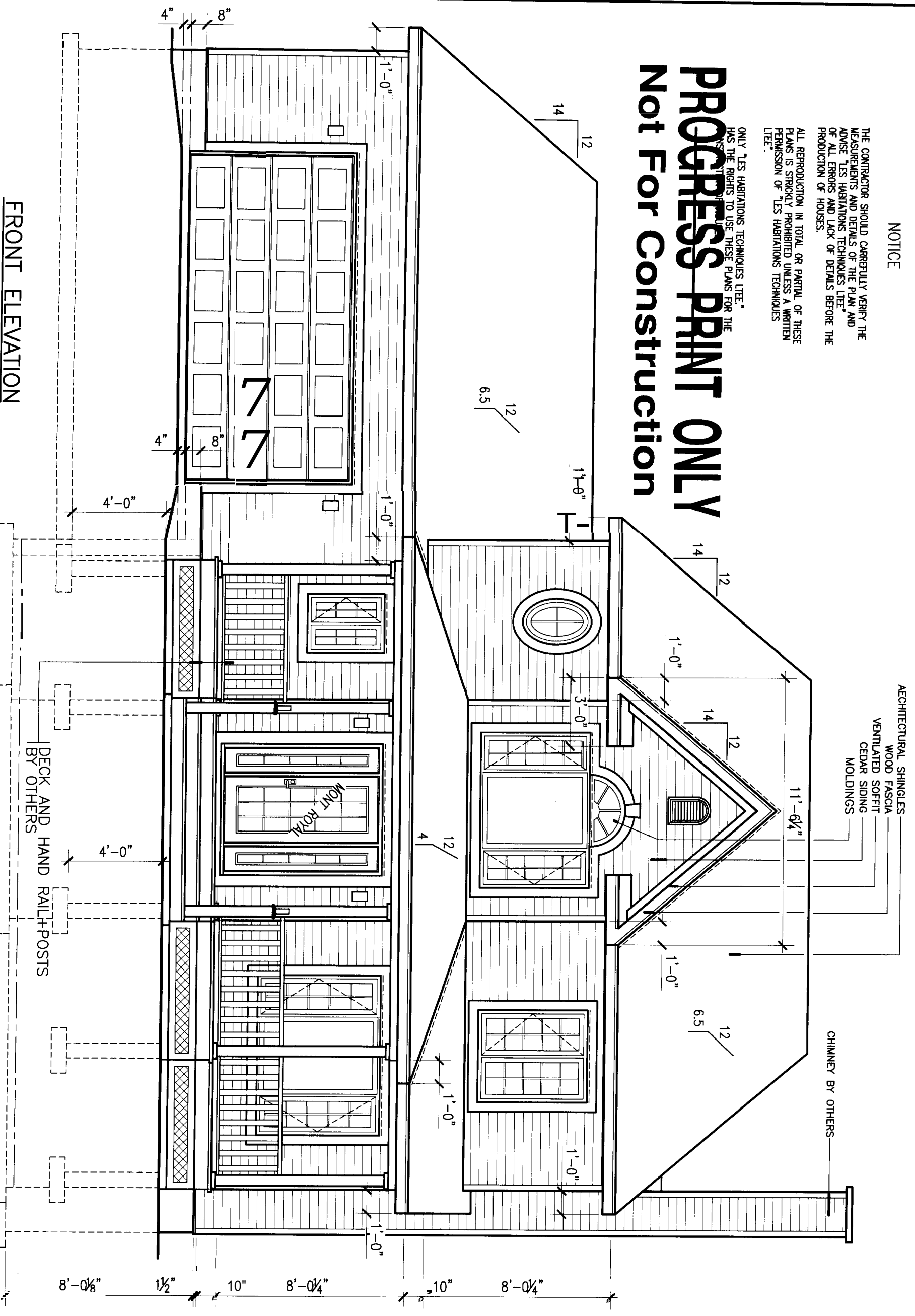
NOTICE

THE CONTRACTOR SHOULD CAREFULLY VERIFY THE MEASUREMENTS AND DETAILS OF THE PLAN AND ADVISE LES HABITATIONS TECHNIQUES LITEE* OF ALL ERRORS AND LACK OF DETAILS BEFORE THE PRODUCTION OF HOUSES.

ALL REPRODUCTION IN TOTAL OR PARTIAL OF THESE PLANS IS STRICTLY PROHIBITED UNLESS A WRITTEN PERMISSION OF LES HABITATIONS TECHNIQUES LITEE*.

ONLY LES HABITATIONS TECHNIQUES LITEE* HAS THE RIGHTS TO USE THESE PLANS FOR THE PRODUCTION OF HOUSES.

PROGRESS PRINT ONLY
Not For Construction



FRONT ELEVATION

REVISION: 12/01/2004 BY S.C.
REVISION: 11/29/2004 BY S.C.



ADVANCED QUALITY CUSTOM HOMES

JOCELYNE DERASPE

C- 00540

1/e 1'-0" by SC App by

Date 11/23/2004

Plan FRONT ELEVATION

Page 3

NOTICE

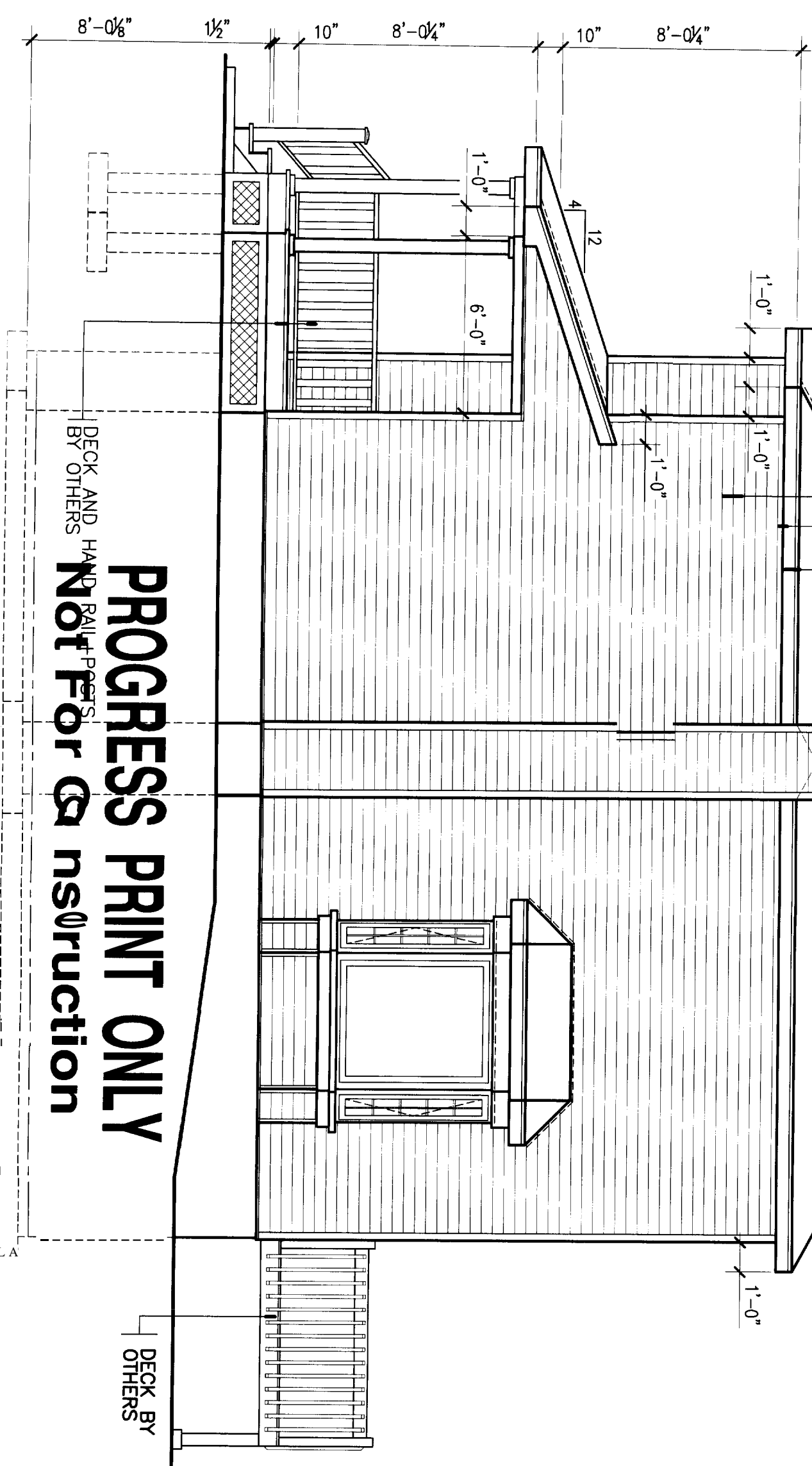
THE CONTRACTOR SHOULD CAREFULLY VERIFY THE MEASUREMENTS AND DETAILS OF THE PLAN AND ADVISE "LES HABITATIONS TECHNIQUES LITE" OF ALL ERRORS AND LACK OF DETAILS BEFORE THE PRODUCTION OF HOUSES.

ALL REPRODUCTION IN TOTAL OR PARTIAL OF THESE PLANS IS STRICTLY PROHIBITED UNLESS A WRITTEN PERMISSION OF "LES HABITATIONS TECHNIQUES LITE".

ONLY "LES HABITATIONS TECHNIQUES LITE" HAS THE RIGHTS TO USE THESE PLANS FOR THE CONSTRUCTION OF HOUSES.

- ARCHITECTURAL SHINGLES
- WOOD FASCIA
- VENTILATED SOFFIT
- CEDAR SIDING
- VALLEY

CHIMNEY BY OTHERS



PROGRESS PRINT ONLY
 DECK AND HAND RAILS + POSTS
 BY OTHERS
Not For Construction

RIGHT ELEVATION

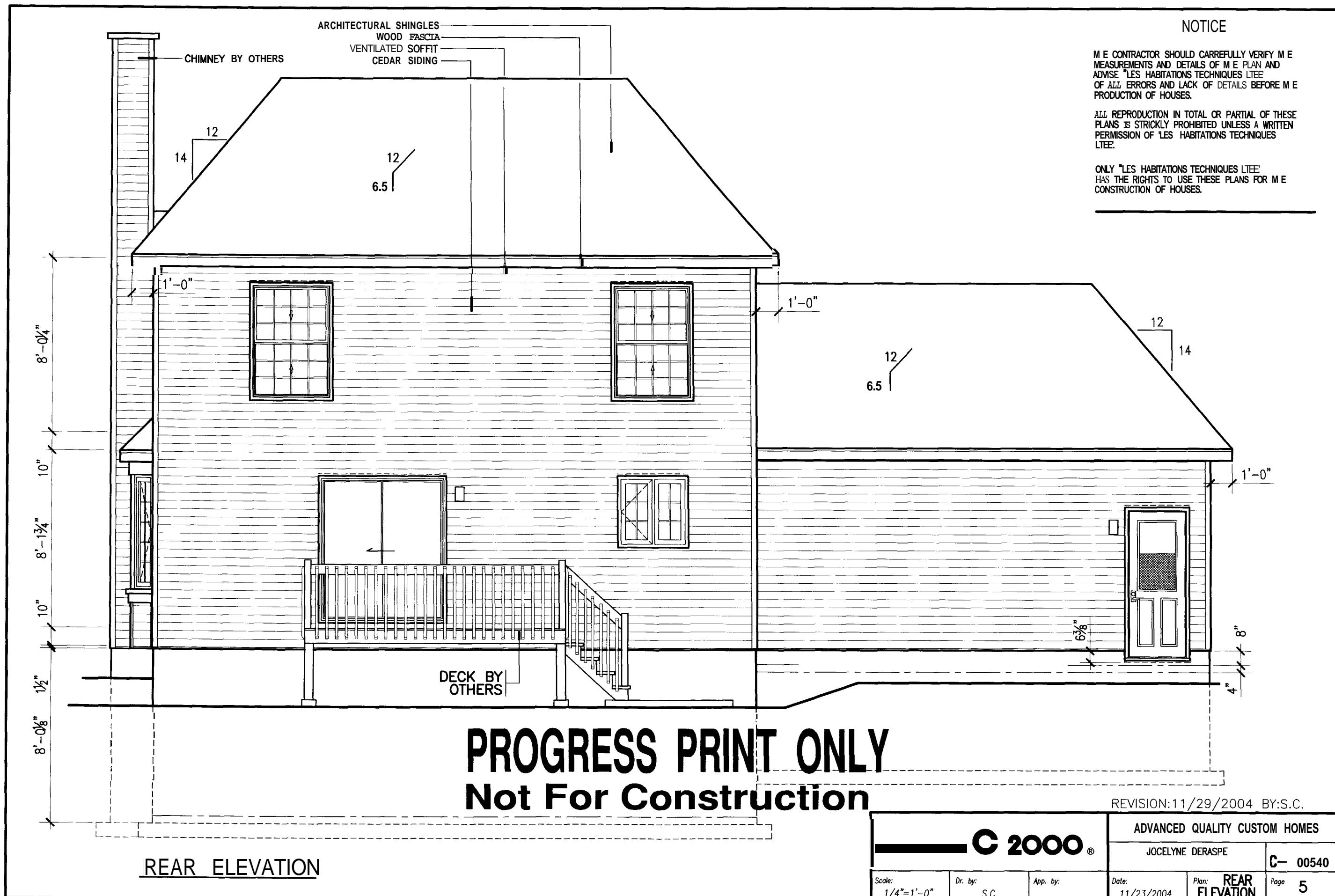
| | | | |
|---|--------------------------|--|-----------|
| HBITEC 2000 ADVANCED QUALITY CUSTOM HOMES | | JOCELYNE DERASPE C- 00540 | |
| Echelle: 1/4" = 1'-0" | Dessiné par: S.C. | App. par: | Page 4 |
| Date: 11/23/2004 | Plan: RIGHT ELEVATION | REVISION: 12/01/2004 BY: S.C. REVISION: 11/29/2004 BY: S.C. | |

NOTICE

M E CONTRACTOR SHOULD CAREFULLY VERIFY M E MEASUREMENTS AND DETAILS OF M E PLAN AND ADVISE "LES HABITATIONS TECHNIQUES LTEE" OF ALL ERRORS AND LACK OF DETAILS BEFORE M E PRODUCTION OF HOUSES.

ALL REPRODUCTION IN TOTAL OR PARTIAL OF THESE PLANS IS STRICTLY PROHIBITED UNLESS A WRITTEN PERMISSION OF "LES HABITATIONS TECHNIQUES LTEE".

ONLY "LES HABITATIONS TECHNIQUES LTEE" HAS THE RIGHTS TO USE THESE PLANS FOR M E CONSTRUCTION OF HOUSES.



PROGRESS PRINT ONLY
Not For Construction

REVISION: 11/29/2004 BY: S.C.

| | | | | | |
|------------------------|-----------------|----------|-------------------------------|--------------------------------|-----------|
| C 2000 | | | ADVANCED QUALITY CUSTOM HOMES | | |
| | | | JOCELYNE DERASPE | | C- 00540 |
| Scale: 1/4" = 1'-0" | Dr. by: S.C. | App. by: | Date: 11/23/2004 | Plan: REAR ELEVATION | Page 5 |

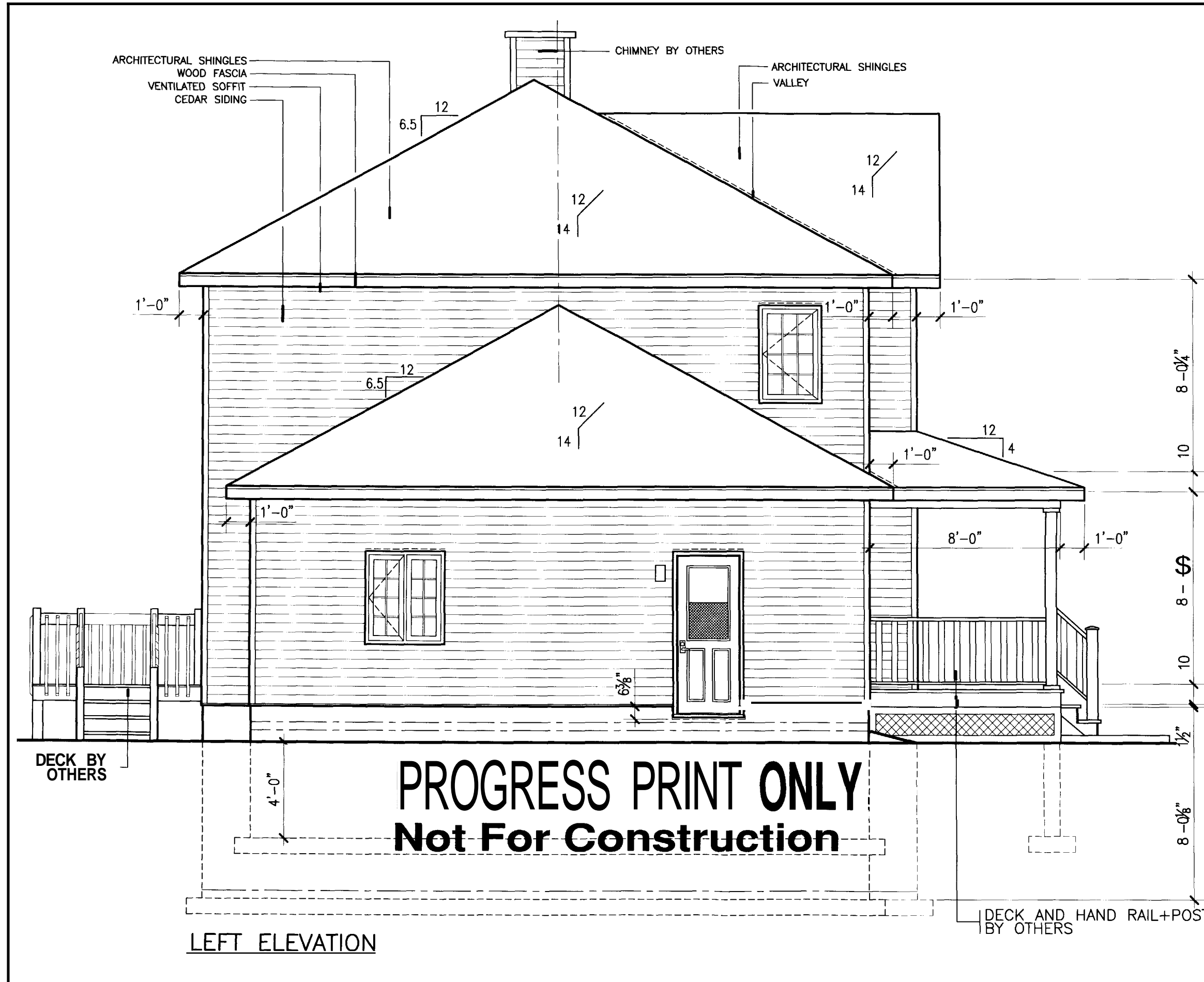
REAR ELEVATION

NOTICE

THE CONTRACTOR SHOULD CAREFULLY VERIFY THE MEASUREMENTS AND DETAILS OF THE PLAN AND ADVISE "LES HABITATIONS TECHNIQUES LTEE" OF ALL ERRORS AND LACK OF DETAILS BEFORE THE PRODUCTION OF HOUSES.

ALL REPRODUCTION IN TOTAL OR PARTIAL OF THESE PLANS IS STRICTLY PROHIBITED UNLESS A WRITTEN PERMISSION OF "LES HABITATIONS TECHNIQUES LTEE".

ONLY "LES HABITATIONS TECHNIQUES LTEE" HAS THE RIGHTS TO USE THESE PLANS FOR THE CONSTRUCTION OF HOUSES.

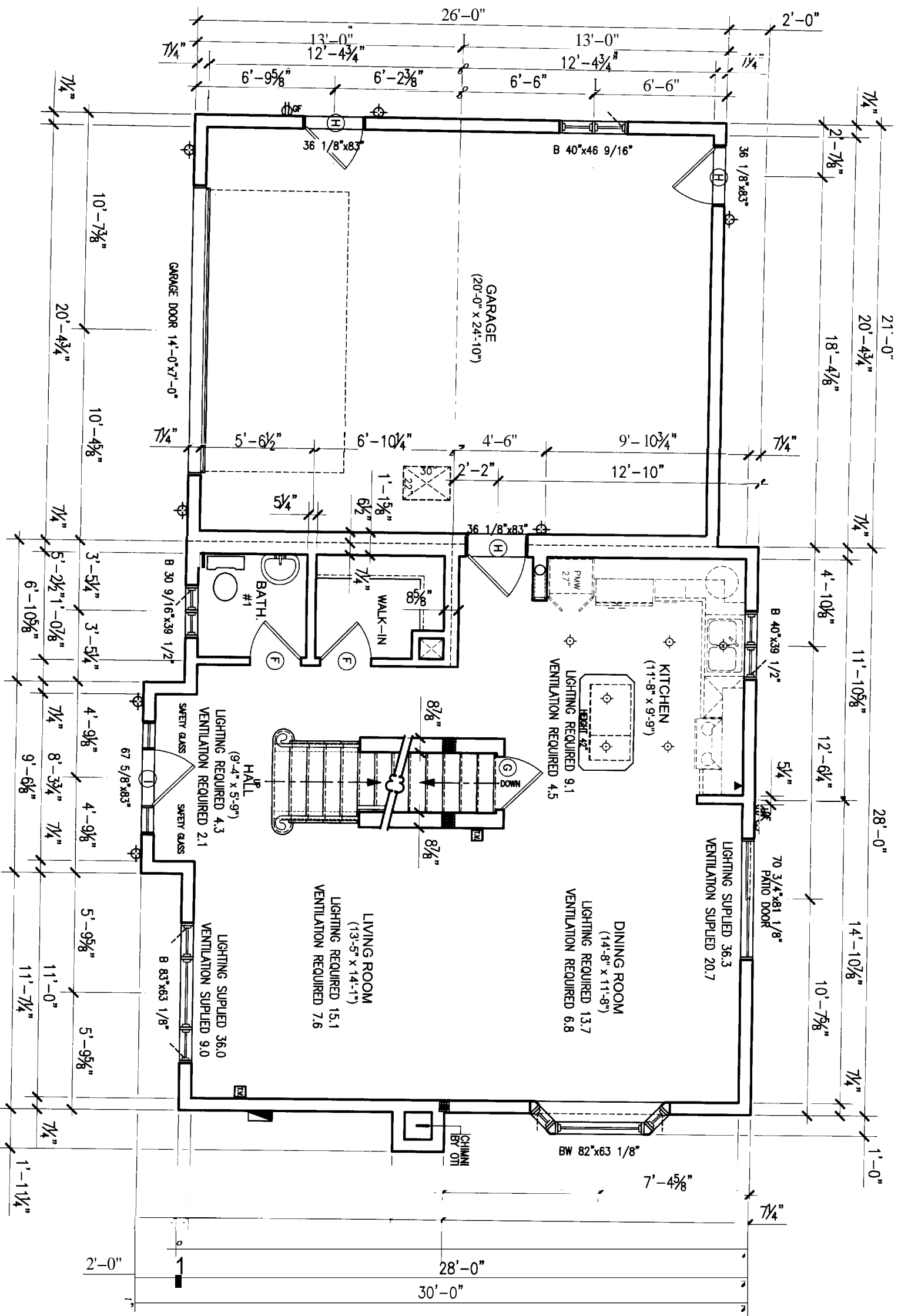


PROGRESS PRINT ONLY
Not For Construction

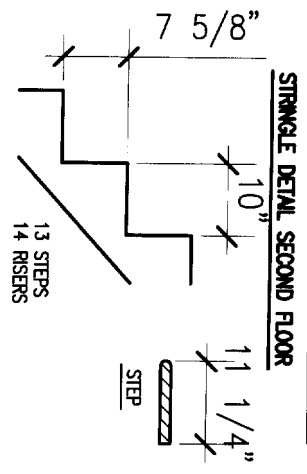
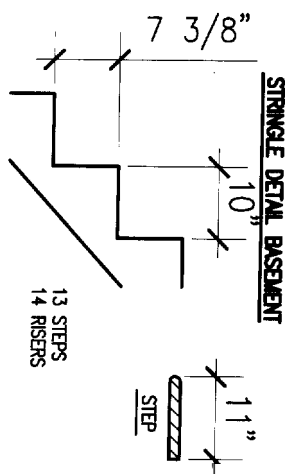
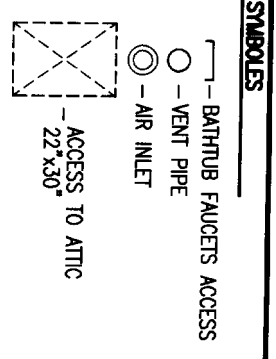
LEFT ELEVATION

REVISION: 12/01 /2004 BY:S.C.
 REVISION: 11/29/2004 BY:S.C.

| | | |
|-------------------------------|-------------------------|-----------|
| HABITEC 2000 | | |
| ADVANCED QUALITY CUSTOM HOMES | | |
| JOCELYNE DERASPE | C- 00540 | |
| Echelle: 1/4"=1'-0" | Dessiné par: S.C. | App. par: |
| Date: 11/23/2004 | Plan: LEFT ELEVATION | Page 6 |



PROGRESS PRINT ONLY
Not For Construction



DOORS SCHEDULE

- (A) - 406mm. (16")
- (B) - 457mm. (18")
- (C) - 508mm. (20")
- (D) - 610mm. (24")
- (E) - 711mm. (28")
- (F) - 762mm. (30")
- (G) - 813mm. (32")
- (H) - 864mm. (34")
- (I) - 915mm. (36")
- (J) - 1219mm. (48")
- (K) - 1524mm. (60")
- (L) - 1829mm. (72")

FOR THE STATE OF MAINE, FOR BASEMENT HEIGHTS FROM 7'-3" TO 8'-0", BASEMENT STAIRS ARE A COMPONENT OF THIS DESIGN WITH A MAXIMUM RISER HEIGHT OF 8 1/4". A MINIMUM TREAD DEPTH OF 9" AND A 1" MOSING WILL BE PROVIDED ON ALL TREADS WITH TREAD WIDTH LESS THAN 10

REVISION: 11/29/2004 BY: S.C.
 REVISION: 12/01/2004 BY: S.C.

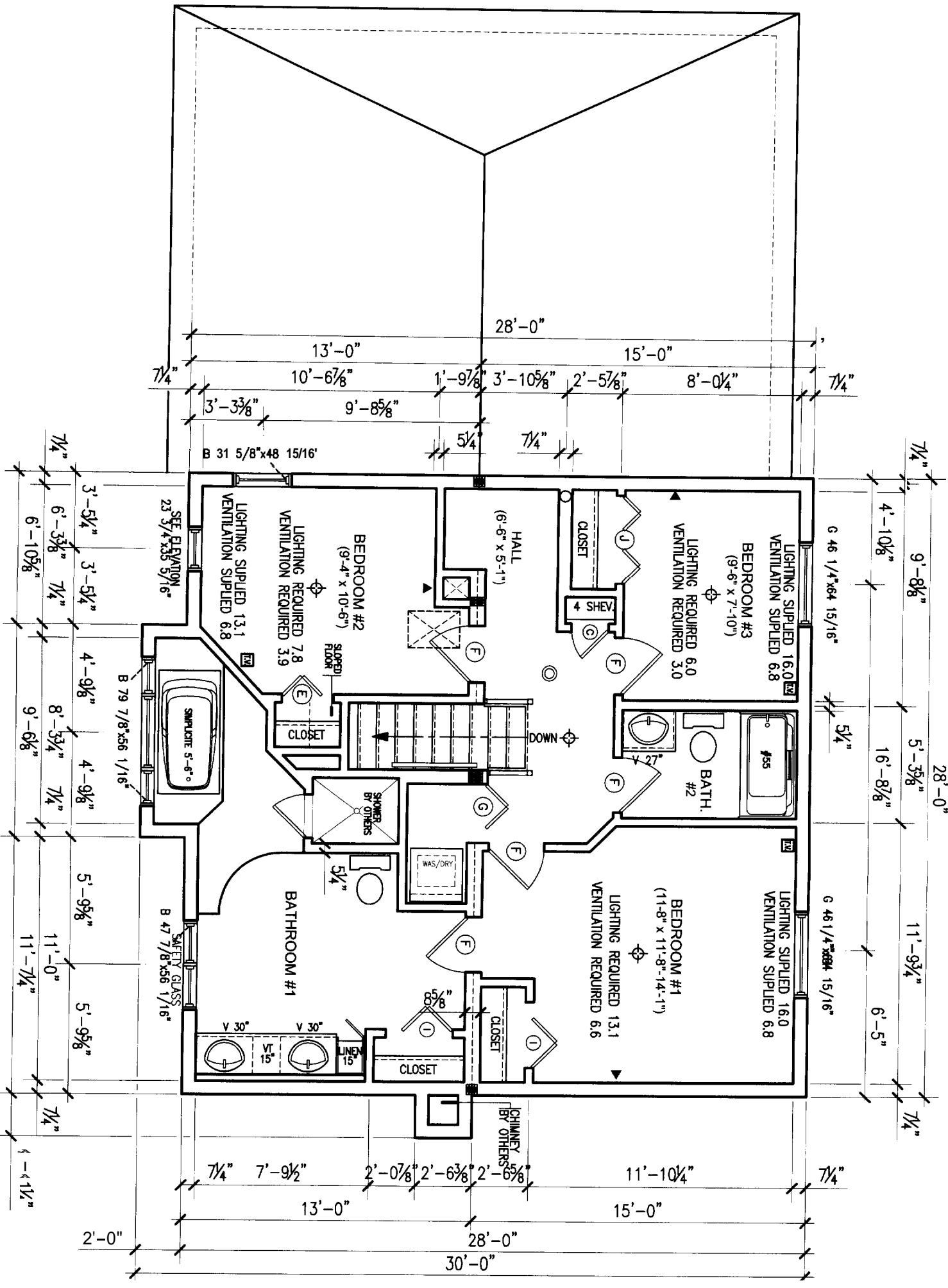
HABITEC 2000

A.Q.M.H.

JOCELYNE DESRAPE

C- 00540

| | | | | | |
|----------|-------------|--------------|-------------|-----------|---|
| Echelle: | 3/16"=1'-0" | Dessiné par: | S.C. | App. par: | |
| Date: | 11/23/2004 | Plan: | FIRST FLOOR | Page | 7 |

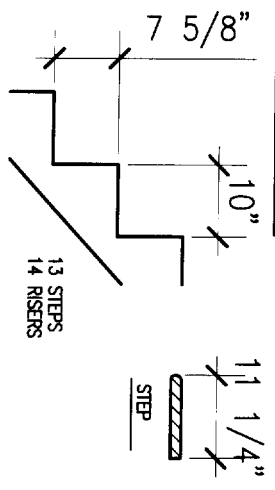


PROGRESS PRINT ONLY
Not For Construction

SYMBOLS

- ┌─ BATHUB FAUCETS ACCESS
- - VENT PIPE
- ⊙ - AIR INLET
- ▣ - ACCESS TO ATTIC - 22"x30"

STRINGER DETAIL



DOORS SCHEDULE

- | | |
|--------------------|---------------------|
| (A) - 406mm. (16") | (G) - 813mm. (32") |
| (B) - 457mm. (18") | (H) - 864mm. (34") |
| (C) - 508mm. (20") | (I) - 915mm. (36") |
| (D) - 610mm. (24") | (J) - 1219mm. (48") |
| (E) - 711mm. (28") | (K) - 1524mm. (60") |
| (F) - 762mm. (30") | (L) - 1829mm. (72") |

FOR THE STATE OF MAINE, FOR BASEMENT HEIGHTS FROM 7'-3" TO 8'-0", BASEMENT STAIRS ARE A COMPONENT OF THIS DESIGN WITH A MAXIMUM RISER HEIGHT OF 8 1/4". A MINIMUM TREAD DEPTH OF 9" AND A 1" NOSING WILL BE PROVIDED ON ALL TREADS WITH TREAD WIDTH LESS THAN 10

REVISION: 12/01/2004 BY: S.C.
 REVISION: 11/29/2004 BY: S.C.

HABITEC 2000

ADVANCED QUALITY CUSTOM HOMES

JOCELYNE DERASPE C-00540

Enchelle: 3/16"=1'-0" Dessiné par: S.C. App. par:

Date: 11/23/2004 Plan: **SECOND FLOOR** Page: **8**