

MUNCHKIN T50M/T80M/80M/140M/199M HIGH EFFICIENCY GAS BOILER

JOB NAME : PARKSIDE
 LOCATION : PORTLAND MAINE
 ARCH./ENGR : WHITNEY ENGINEEFUNG
 WHOLESALER : F W WEBB
 MECH. CONTRACTOR : GRANITE DORP
 MODEL NUMBER : SEE SCHEDULE BELOW
 TYPE OF GAS : NATURAL
 BTU/HR INPUT LOW FIRE:
 BTU/HR OUTPUT HIGH FIRE:
 MODULATION RANGE (4:1 RATIO):

Standard Features

- 92% AFUE
- 30 PSI ASME Relief Valve
- Modulating Firing rate 18,000 btu to 199,000 btu
- Sealed Combustion Chamber
- Stainless Steel Premix Burner
- Bbiler Constructed of Stainless Steel
- Water Pressure Switch (setat 8PSI)
- Spark Ignition
- Flame Rectification Probe
- Supply and Return Thermistor
- Combination Pressure and Temperature Relief Valve
- High Limit Temperature Control with Manual reset
- Low NOx Operation exceeds most stringent Air Quality requirements
- 24 Volt Transformer
- 120 Volt Output to Central Heating Circulator
- Modulating digital control system
- Digital Display Panel
- 5/8 Condensation Connection with Built-in Trap
- Electrical Junction Box with Swifch
- Wiring Harness with Molex Connection
- Vent Termination Coupling and Tee (PVC)
- 12 Year Limited Warranty

Optional Equipment

- V1000 Aluminum Outside Termination Vent Kit
- Condensation Neutralizer (N1 100)
- 3" Concentric Vent Kit (KGAVT0601CVT)
- Optional ASME "H" Stamp
- Vision I [outdoor reset - Indirect Priority-Two Temperature operation)

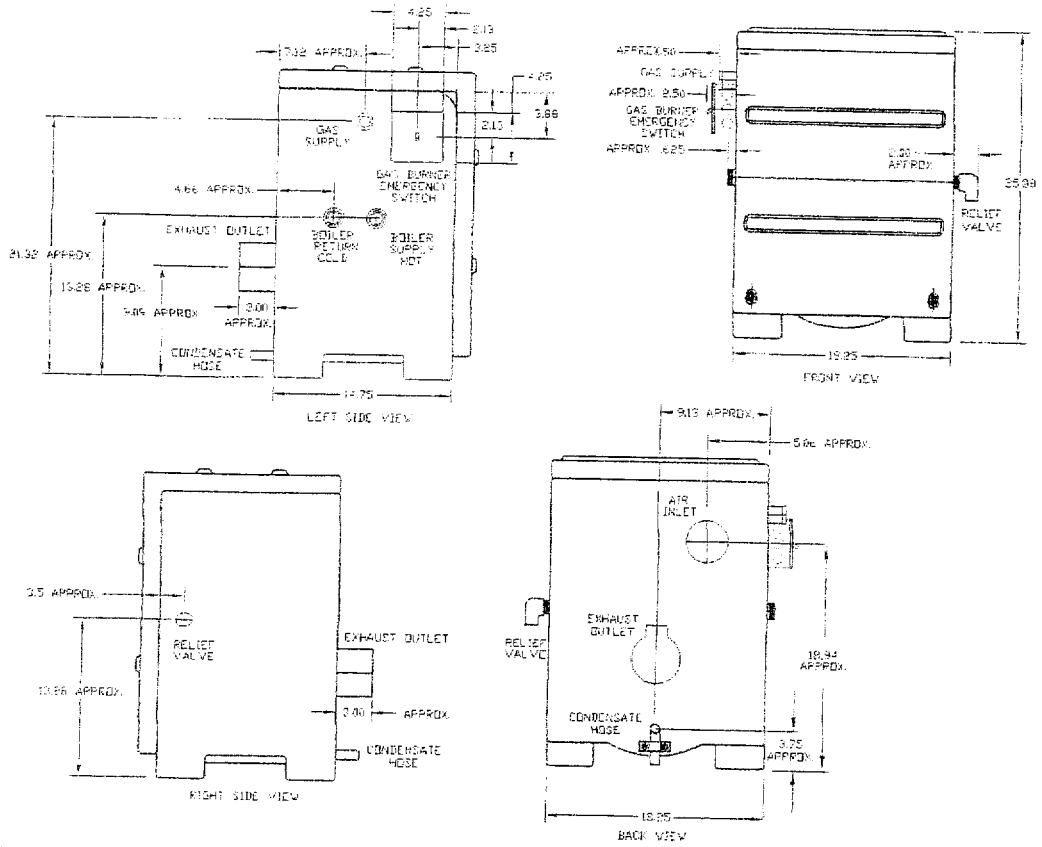
Additional Features

- Freeze Protection
- 6 Minute Modulcting burner Sequence
- Adjustable differential central heating
 - Temperature measurement in Celsius or Fahrenheit
- Disply will allow installer to check current status of Munchkin parameters

BOILER SCHEDULE											
BLDG	TAG	INPUT	DOE OUTPUT	MUNCHKIN MOD #	GPM	TEMP RISE	PD	GAS CONNECTION	WEIGHT	VENT DIA	
A (APT)	B-1	199000	183000	199M	19	30	15	.75"	111	3"	
A (APT)	B-2	140000	129000	140M	19	30	15	.75"	101	3"	
A (PROP)	B-3	199000	183000	199M	10	30	5.5	.75"	111	3"	
A (PROP)	B-4	199000	183000	199M	10	30	5.5	.75"	111	3"	
B	B-5	199000	183000	199M	11.5	30	5.5	.75"	111	3"	
B	B-6	199000	183000	199M	11.5	30	5.5	.75"	111	3"	
B	B-7	140000	129000	140M	11.5	30	6.5	.75"	101	3"	

Dimensions

80M



140M / 199M

