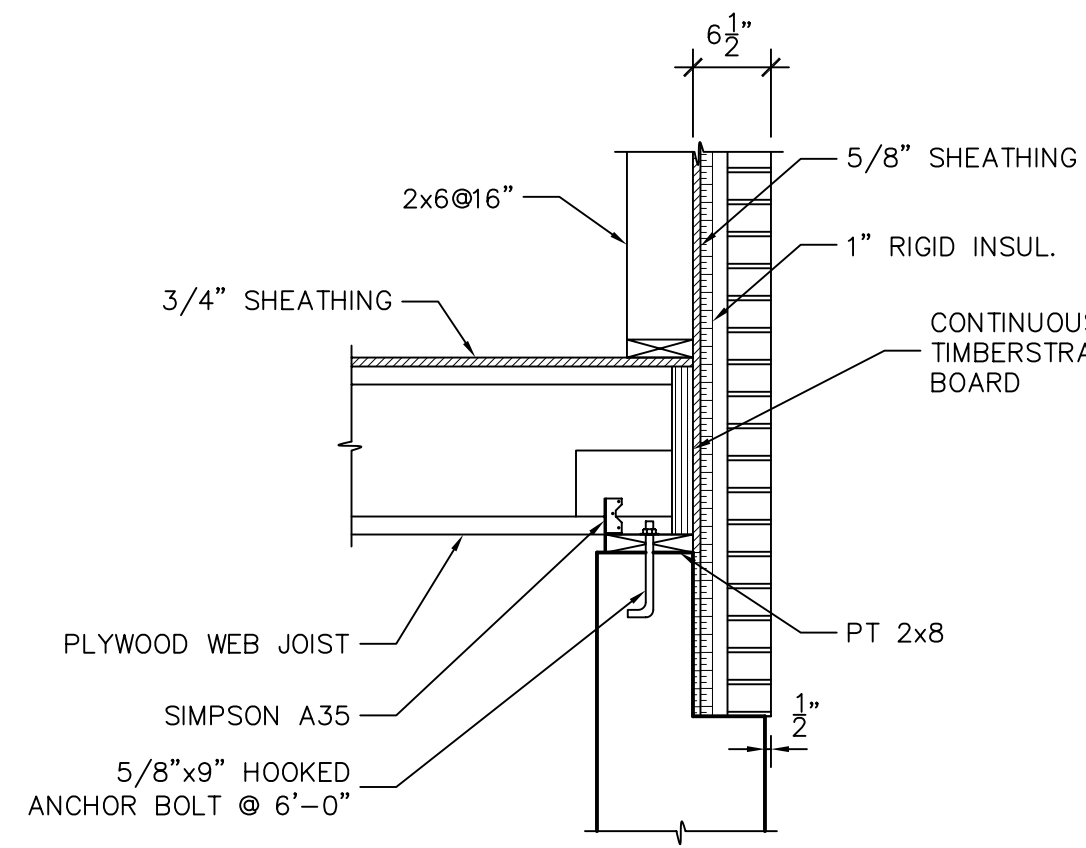
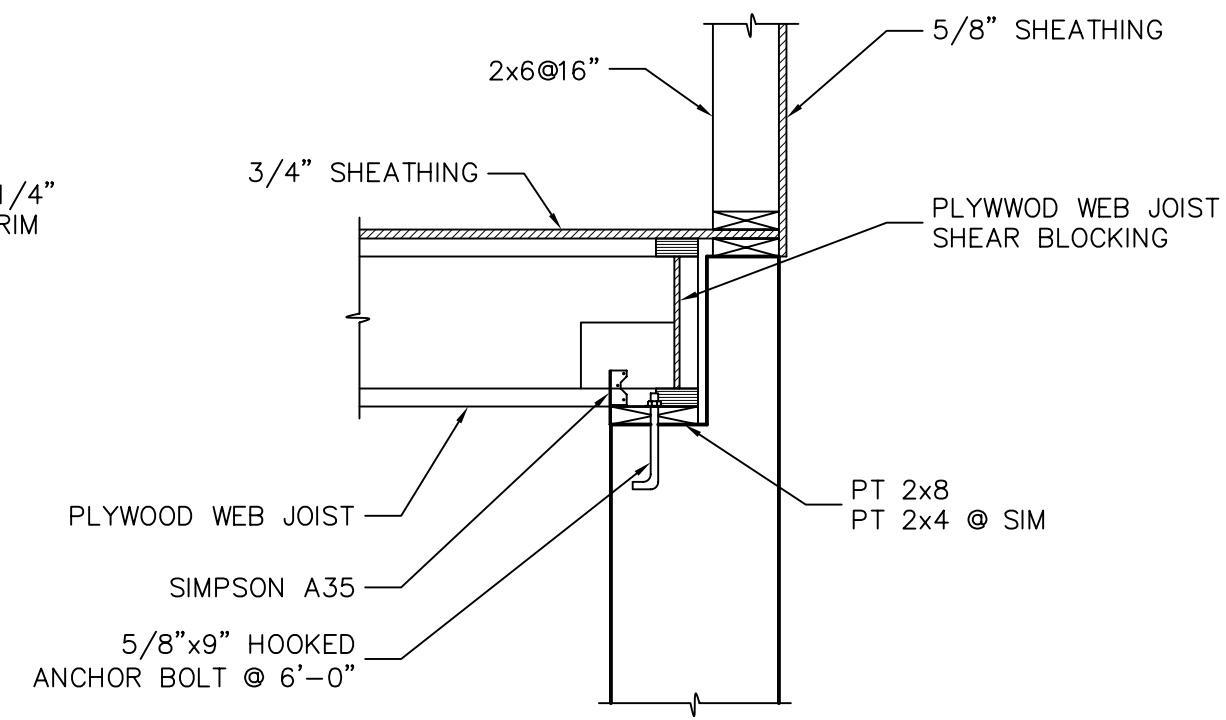


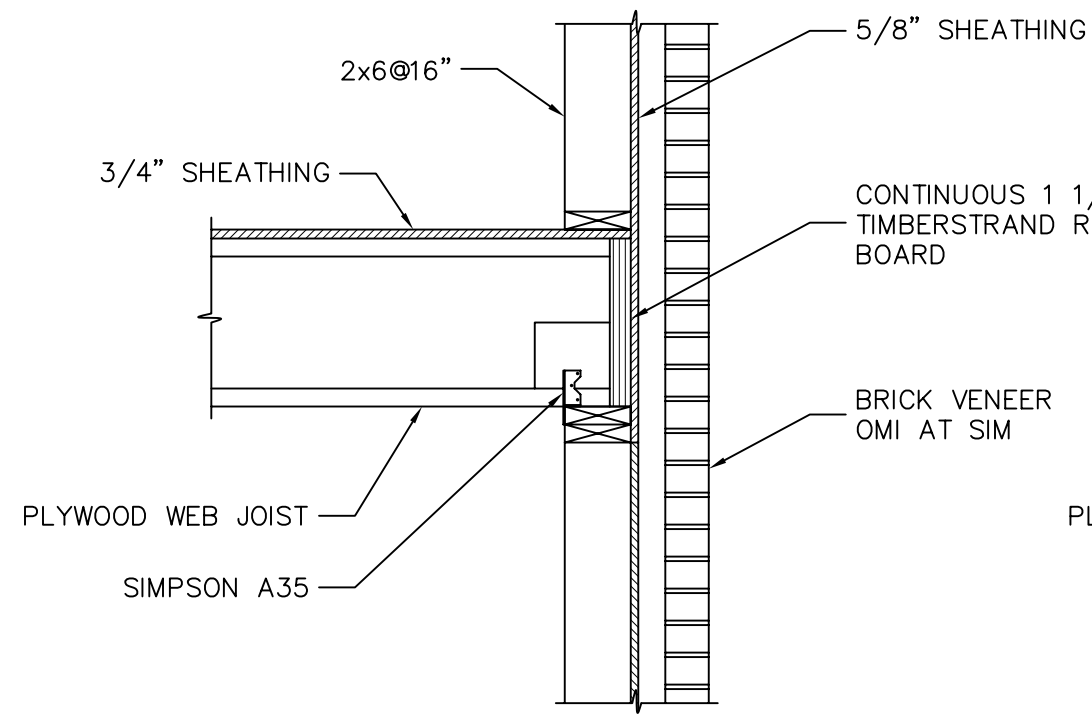
T:\00\_TFH Projects\PP\0114\_Mellen Grant\Send\Revise\Revised\SC20210 Bid\docs\CAD\BUILDING\DWG\A-B-S7.dwg, Model: 2/27/2004 11:28:38 AM



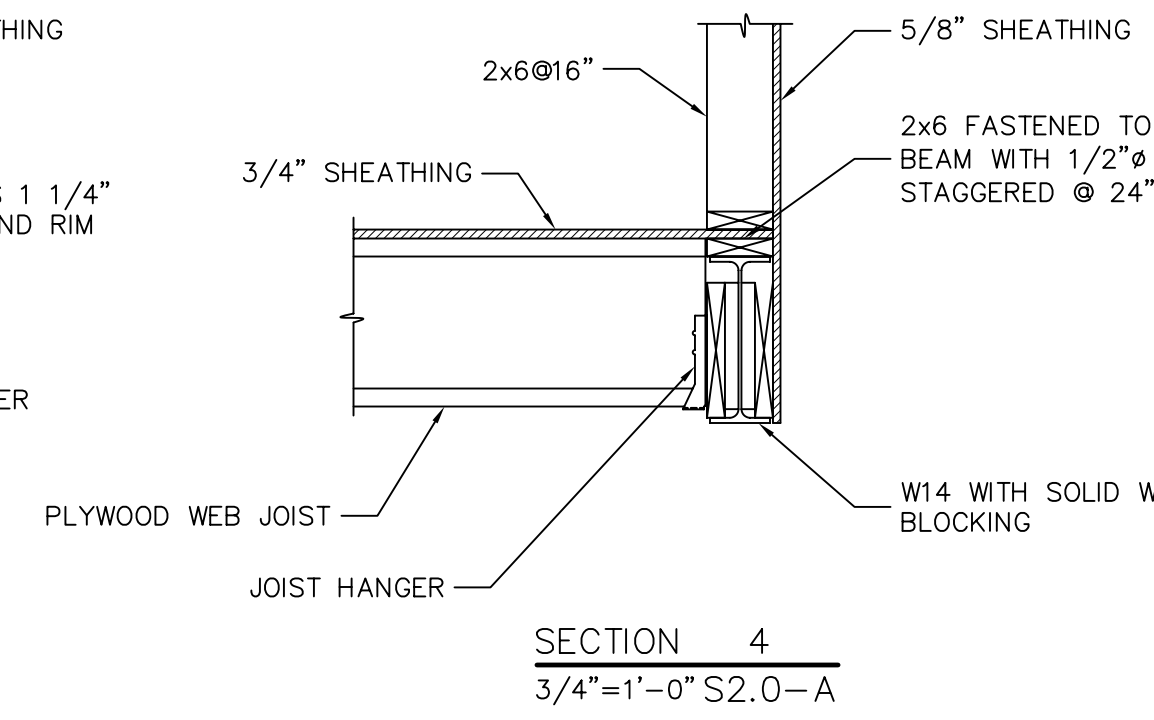
SECTION 1  
3/4"=1'-0" S2.0-A



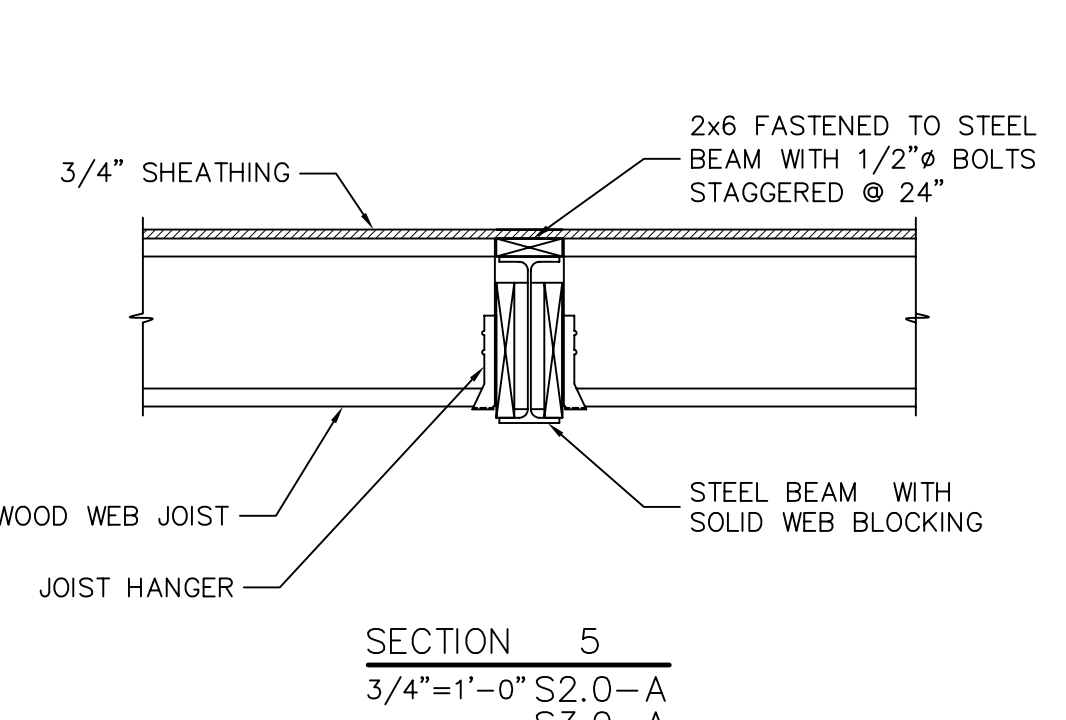
SECTION 2  
3/4"=1'-0" S2.0-A



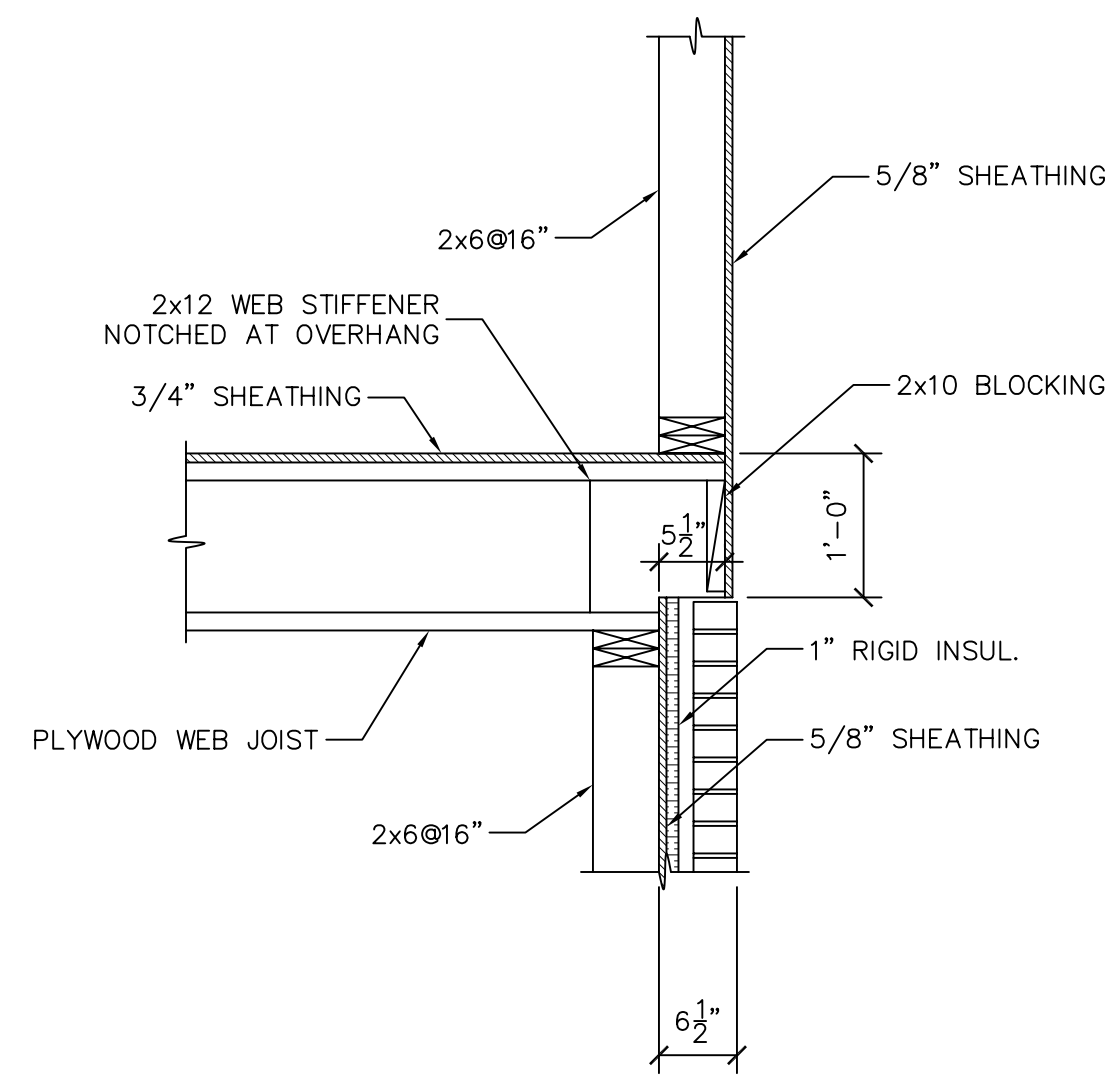
SECTION 3  
3/4"=1'-0" S2.0-A  
S3.0-B



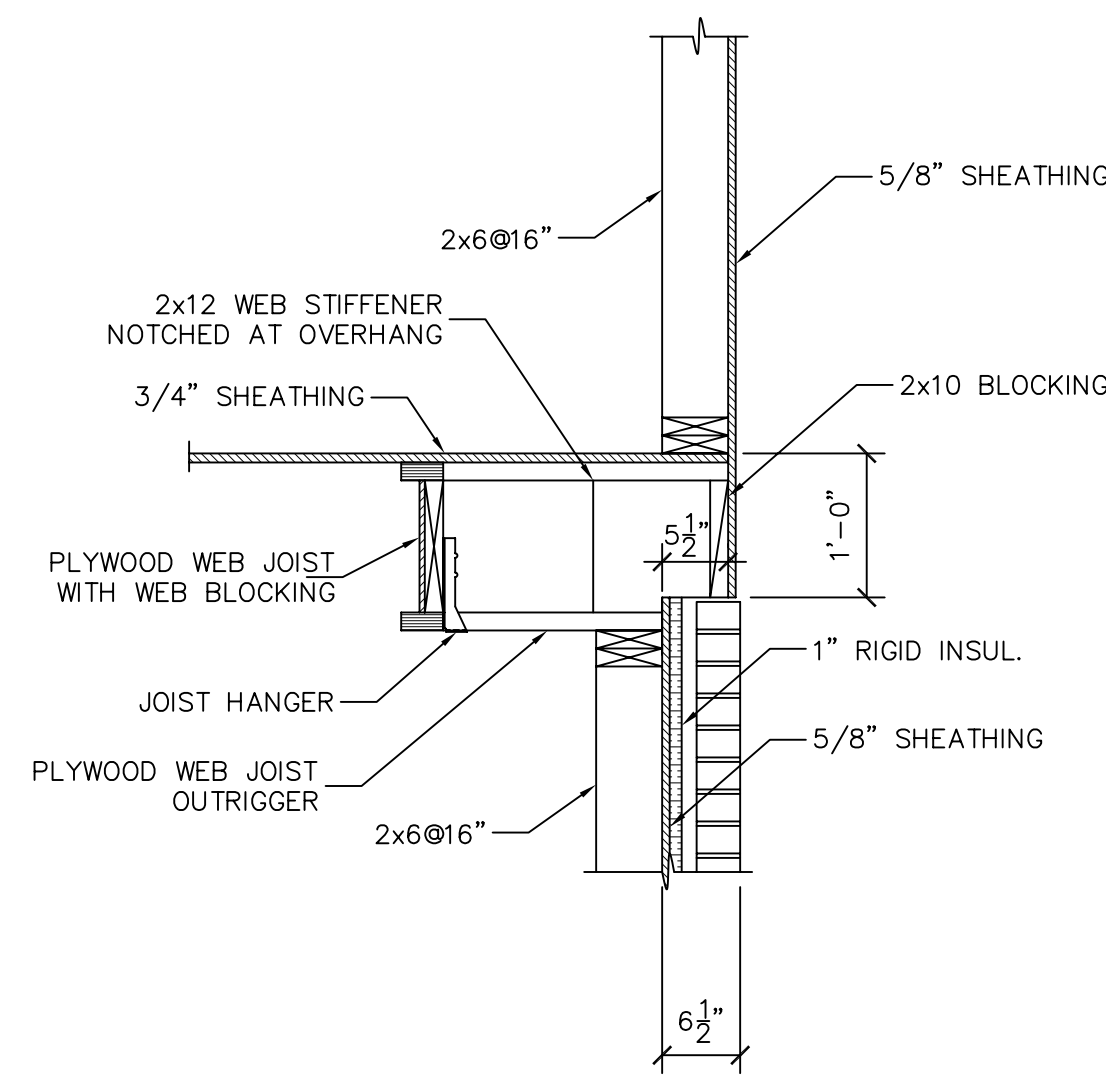
SECTION 4  
3/4"=1'-0" S2.0-A



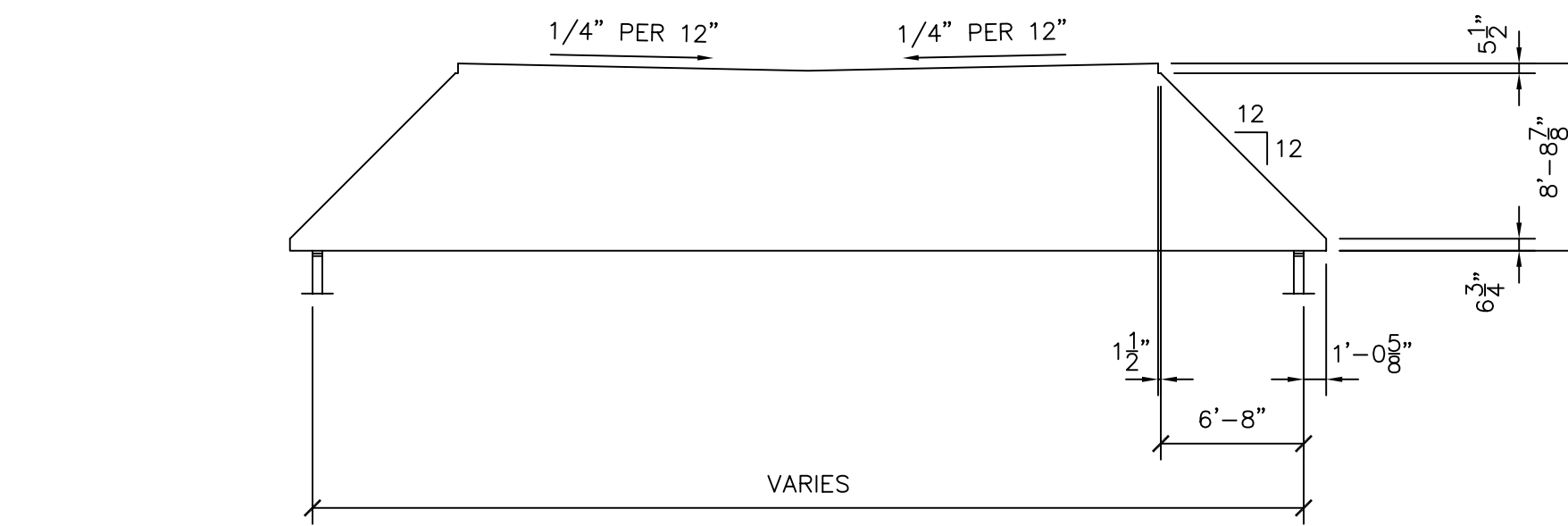
SECTION 5  
3/4"=1'-0" S2.0-A  
S3.0-A  
S2.0-B



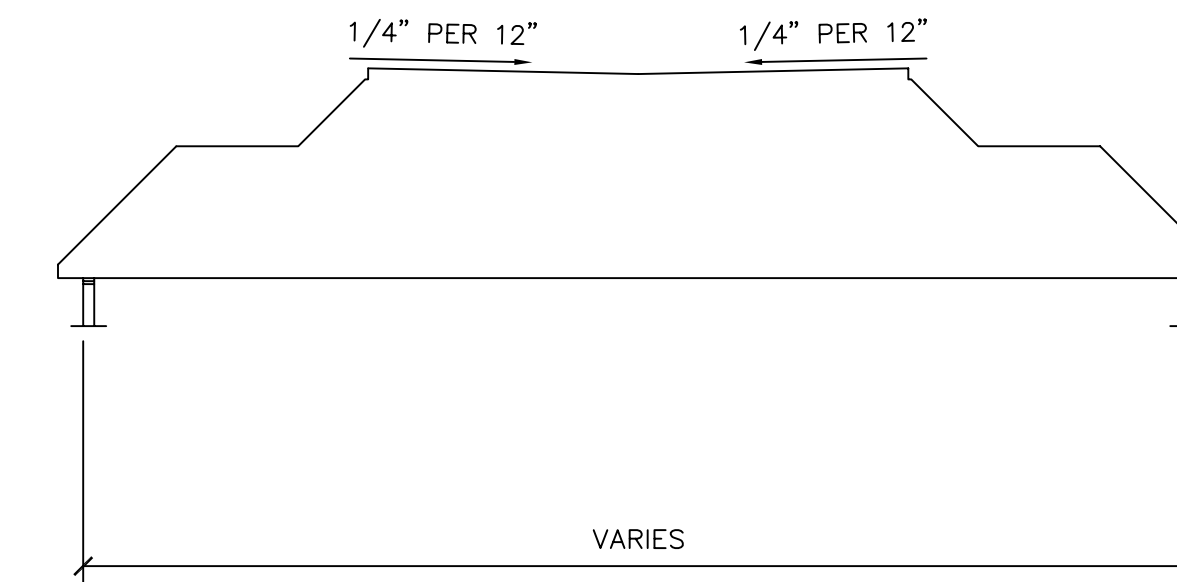
SECTION 6  
3/4"=1'-0" S2.0-A



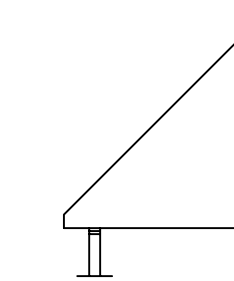
SECTION 7  
3/4"=1'-0" S2.0-A



TRUSS TYPE A  
1/8"=1'-0"



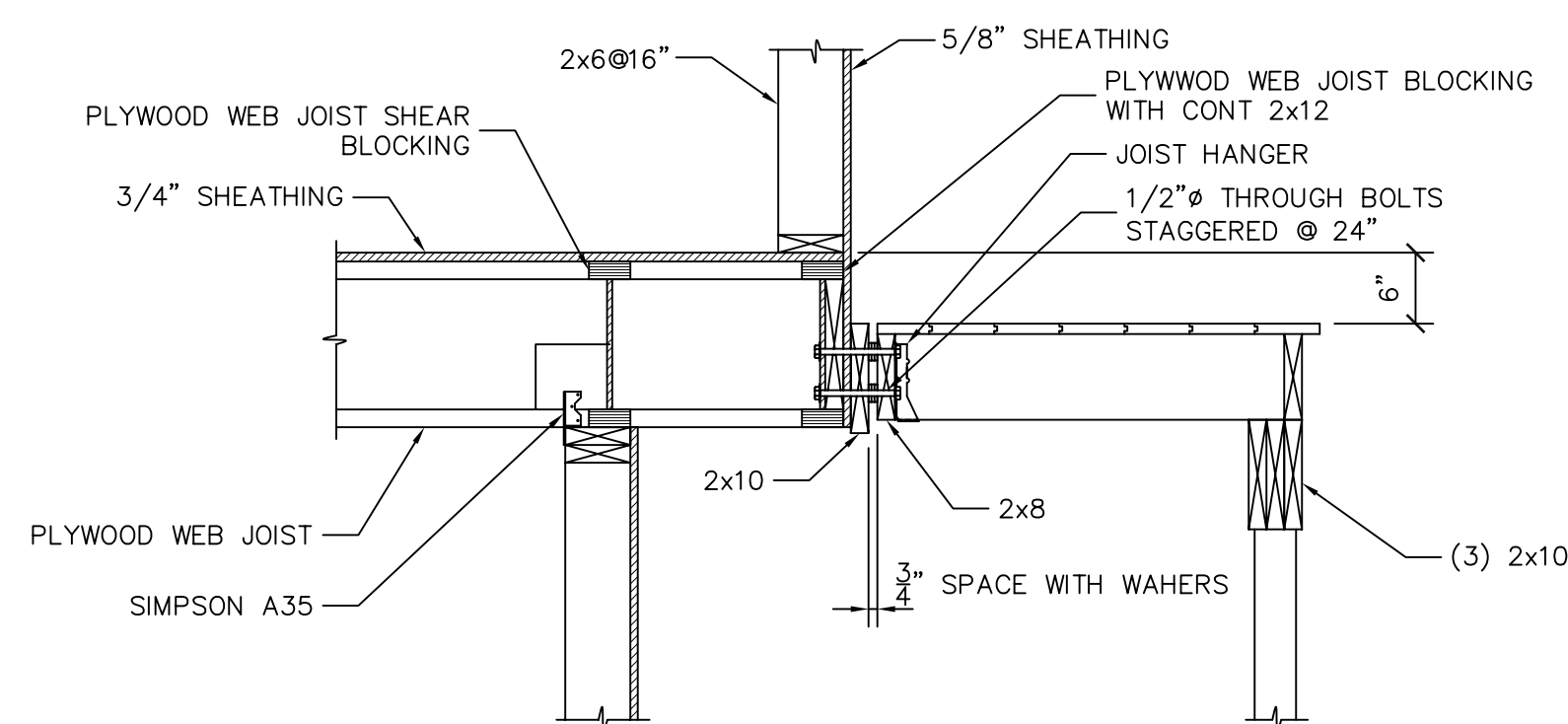
TRUSS TYPE B  
1/8"=1'-0"



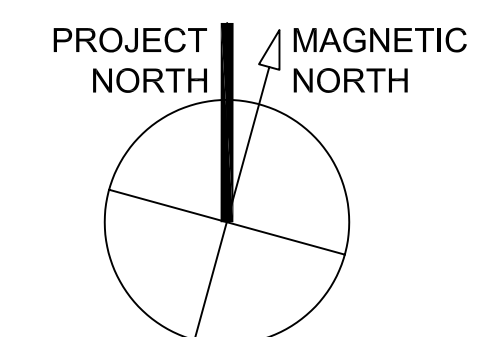
TRUSS TYPE C  
1/8"=1'-0"

**TRUSS LOADING:**

TOP CHORD  
DEAD LOAD = 15 PSF  
FLAT ROOF SNOW LOAD = 46 PSF  
SLOPED SNOW LOAD = 38 PSF  
WIND LOAD = ±22 PSF  
BOTTOM CHORD  
DEAD LOAD = 10 PSF  
SNOW LOAD VALUE IS FOR UNBALANCED  
LOAD CONDITION PER BOCA/1999.  
LOAD COMBINATIONS PER BOCA/1999.



SECTION 8  
3/4"=1'-0" S2.0-A



© TFH ARCHITECTS

GRANT & MELLEEN SREET  
PARKSIDE NEIGHBORHOOD CENTER & AFFORDABLE HOUSING  
PEOPLE'S REGIONAL OPPORTUNITY PROGRAM  
PORTLAND, MAINE

TFH ARCHITECTS  
100 COMMERCIAL STREET  
PORTLAND MAINE 04101  
TELEPHONE 207 775 6141  
ARCHITECTURE PLANNING

CONSULTANTS:  
CIVIL:  
Pirkham & Greer  
175 US Route One  
Farmport, ME 04105  
207-765-0242  
STRUCTURAL:  
Structural Design Consulting  
Five Baskin Lane  
Farmport, ME 04105-2448  
207-878-8030  
MECHANICAL:  
Whitney Engineering  
10 Danforth Place  
Portland, ME 04102  
207-833-2921  
ELECTRICAL:  
Bennett Engineering  
7 Bennett Road  
Freeport, ME 04032  
207-865-0475

REVISIONS:  
DATE: 01/29/04  
PROJECT No. 0114  
DRAWN BY: DJT  
CHECKED BY: DJT  
SCALE: AS NOTED

SHEET TITLE:  
FRAMING DETAILS

BUILDING A/B  
S7.0