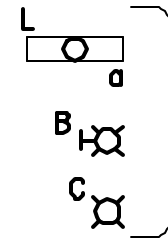
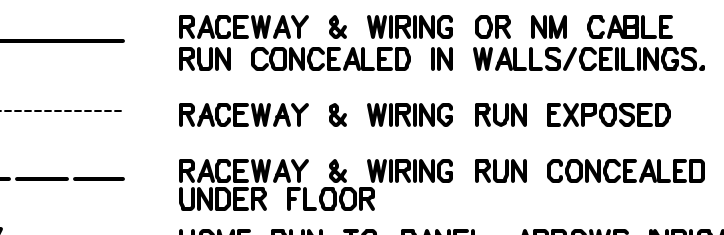
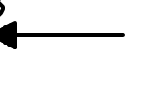
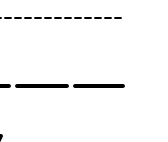


SYMBOL LEGEND

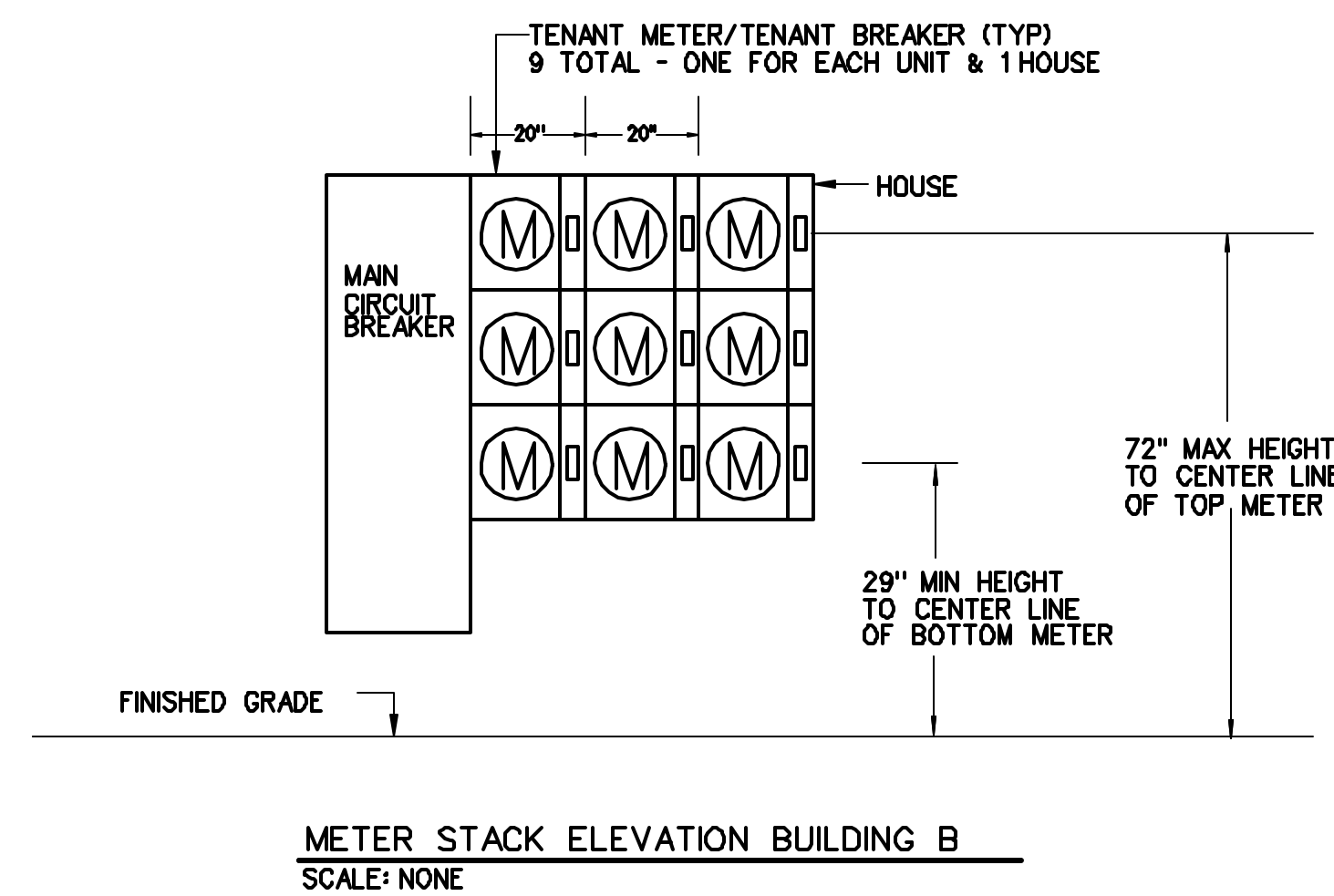
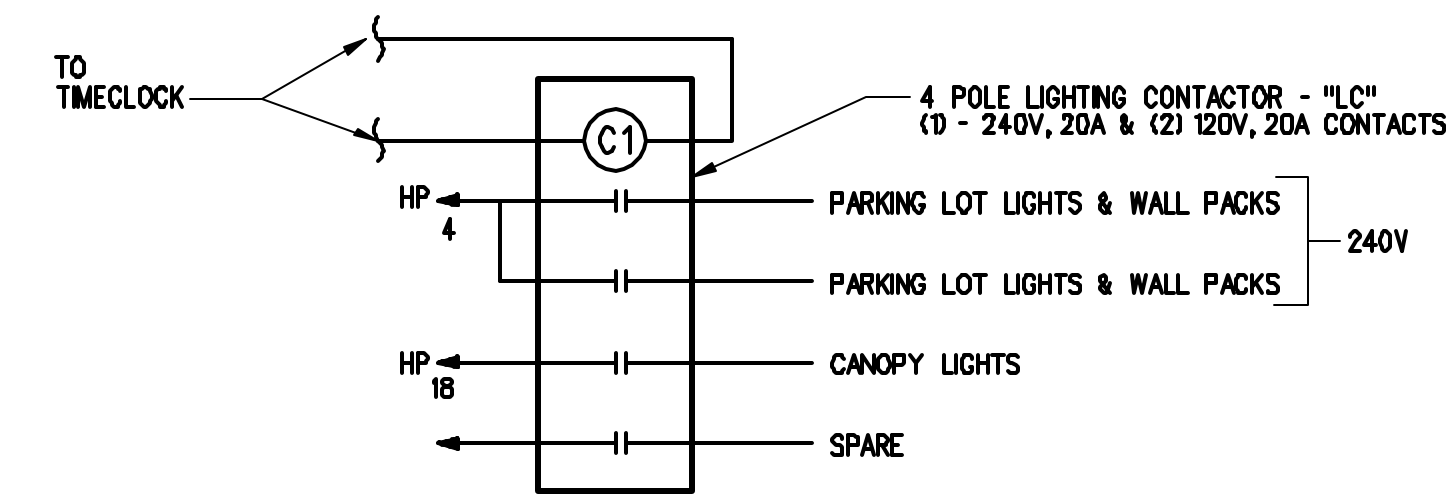
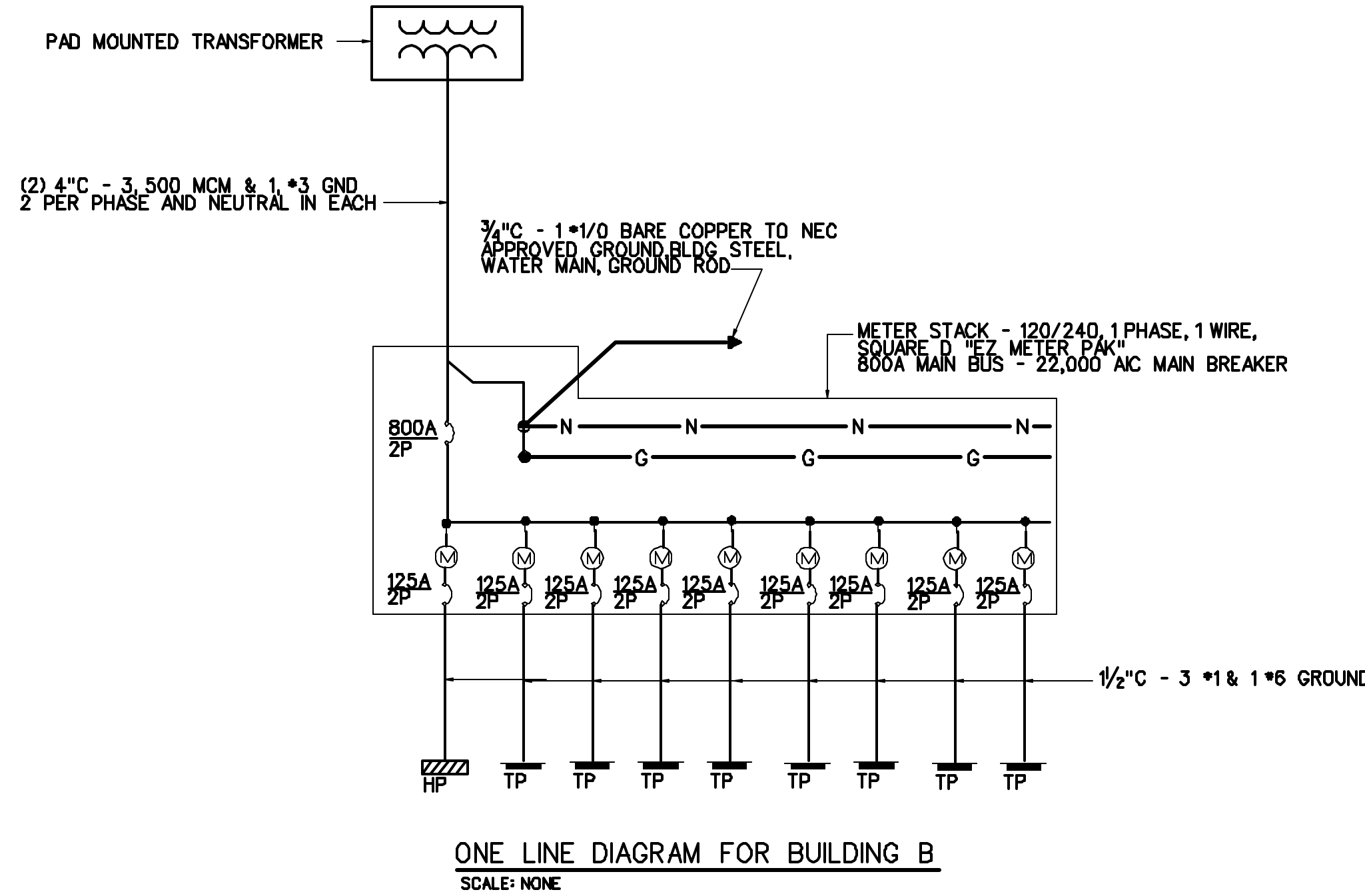
- LOAD CENTER, 120/240V, 1PHS, 3WIRE
 - Ⓜ ELECTRIC MOTOR DRIVEN EQUIPMENT, HP SHOWN
 - SM MANUAL MOTOR STARTER SWITCH WITH THERMAL OVERLOAD DEVICE, MOUNTED AT UNIT
 - Ⓜ JUNCTION BOX - "H" DENOTES RANGE HOOD, "DW" DENOTES DISHWASHER
 - EF EXHAUST FAN WIRED E.C., FURNISHED, INSTALLED AND DUCTED BY M.C.
 - Ⓜ COMBINATION MOTOR STARTER - WITH AUXILIARY CONTACTS AND HAND-OFF-AUTO SWITCH AND RED RUN LIGHT
 - UNFUSED DISCONNECT SWITCH - 250 VOLT SIZE & NO. POLES AS NOTED.
-
- 
 LIGHTING FIXTURES- CAPITAL LETTERS DENOTE TYPE AS PER LIGHTING FIXTURE SCHEDULE. LOWER CASE LETTERS INDICATE SWITCH CONTROL.
-
- 
 RACEWAY & WIRING OR NM CABLE RUN CONCEALED IN WALLS/CEILINGS.
 RACEWAY & WIRING RUN EXPOSED
 RACEWAY & WIRING RUN CONCEALED UNDER FLOOR
- 
 HOME RUN TO PANEL- ARROWS INDICATE QUANTITY OF CIRCUITS- NUMERALS DENOTE CIRCUIT NUMBERS
- 
 BRANCH CIRCUIT WIRING SHALL CONSIST OF 2*12, 1*12G, 1/2"C UNLESS OTHERWISE NOTED. ASTERISK INDICATES #10 AWG FOR ALL CIRCUITS CONTAINED IN HOMERUN.
-
- S SINGLE POLE SWITCH, 120 VOLT, 20 AMP, RESIDENTIAL GRADE, GROUNDING TYPE, MOUNT 48" AFF, 3-3-WAY, P-PILOT LOWER CASE LETTER INDICATES FIXTURE OR CONTROLLED LOAD, PILOT LIGHT SWITCHES SHALL BE PROVIDED W/ ENGRAVED NAMEPLATE IDENTIFYING USE.
 - S_B GAS BURNER SAFETY SWITCH - PROVIDE WITH RED PLATE
 - Ⓜ DUPLX RECEPTACLE- 20A, 125V RESIDENTIAL GRADE GROUNDING TYPE AND MATCHING IVORY PLATE - MOUNT 18" AFF. "R" DENOTES REFRIGERATOR - "DW" DENOTES DISHWASHER
 - Ⓜ DUPLX RECEPTACLE- 20A, 125V RESIDENTIAL GRADE GROUNDING TYPE AND MATCHING IVORY PLATE - MOUNT 18" AFF. BOTTOM RECEPTACLE SWITCHED
 - GF Ⓜ DUPLX RECEPTACLE- GROUND FAULT OUTLET 20A, 125V- WITH MATCHING IVORY PLATE FURNISHED W/ OUTLET. FLUSH MOUNTED 45" AFF EXCEPT AS NOTED.
 - Ⓜ RANGE OUTLET 50 AMP, 250 VOLT, GROUNDING TYPE FLUSH MOUNTED 18" AFF
 - Ⓜ DRYER OUTLET, 30 AMP, 250V, GROUNDING TYPE FLUSH MOUNTED, 18" AFF.
 - WP WEATHERPROOF
 - Ⓜ SYSTEM CONNECTED SMOKE DETECTOR
 - 15 Ⓜ STROBE ONLY IN BATHROOM. NUMERAL DENOTES CANDELA RATING.
 - 200* Ⓜ SYSTEM CONNECTED FIXED TEMPERATURE HEAT DETECTOR
 - Ⓜ SINGLE STATION SMOKE DETECTOR, PHOTOELECTRIC TYPE, NON-SYSTEM CONNECTED "S" DENOTES WITH STROBE LIGHT AND BATTERY BACKUP - SEE SPECIFICATION
 - Ⓜ FIRE ALARM PULL STATION - MOUNT 48" AFF
 - MH 30 Ⓜ FIRE ALARM AUDION/VISUAL, MOUNT 6'-8" AFF - NUMERAL DENOTES CANDELA RATING
 - Ⓜ TELEPHONE CONNECTION MOUNT 18" AFF - W/1-4 PAIR CABLE TO TEL. BACKBOARD
 - Ⓜ TV OUTLET DEVICE AND INDIVIDUAL CABLE BACK TO CTV ENTRANCE LOCATION WALL PLATE AND CABLE BY E.C. MOUNT AT 18" AFF
 - Ⓜ PHOTOCELL
 - LCB LIGHTING CONTACTOR
 - TCB TIMECLOCK
 - Ⓜ SELF CONTAINED EMERGENCY LIGHTING UNIT W/ 2 HEADS. PRESCOLITE #ESB7-12V, 12V D.C., 50 WATTS FOR 90 MINUTES.
 - T SPRINKLER SYSTEM TAMPER SWITCH
 - F SPRINKLER SYSTEM FLOW SWITCH
 - Ⓜ ELECTRIC DOOR OPENER/CLOSER
 - Ⓜ PADDLE SWITCH

PROJECT: PARKSIDE NEIGHBORHOOD CENTER PORTLAND, MAINE		SINGLE PHASE PANELBOARD SCHEDULE		PANEL DESIGNATION: HP		
MAIN LUGS: 125A, 2P		SURFACE MOUNTED		WIRE: 3		
KVA LOAD		VOLTS: 120/240	PHASE: 1		KVA LOAD	
1.0	BOILER B-4 & P-4	1	2P	2	PUMP P-12	1.2
1.0	BOILER B-5 & P-5	3	2P	2		1.2
.50	PUMPS P-12, P-14 & HRV-4	5	2P	2	OUTLETS - RM 008	.50
.80	LIGHTING - 003, 004, 008	7	2P	2	OUTLETS - RMS 002, 003, 004	1.4
.80	LIGHTING - 009	9	2P	2	DRYER	3.0
1.5	WASHER	11	2P	2		3.0
1.5	WASHER	13	2P	2	DRYER	3.0
1.5	OUTLETS - RM 010	15	2P	2		3.0
.50	LIGHTING - STAR 112, 001	17	2P	2	CANOPY LIGHTS VIA CONTACTOR "LC"	.50
.50	LIGHTING - STAR 122, 011	19	2P	2	TEMP. CONTROL PANEL	.50
.50	OUTLETS - ROOF	21	2P	2	SPARE	
	SPARE	23	2P	2		
	SPACE	25	2P	2		
	SPACE	27	2P	2		
		29	2P	2		
		31	2P	2		
		33	2P	2		
		35	2P	2		
		37	2P	2		
		39	2P	2		
		41	2P	2		
TOTAL CONN. LOAD: 26.3 KVA				TOTAL DEM. LOAD: _____		

PROJECT: PARKSIDE NEIGHBORHOOD CENTER PORTLAND, MAINE		SINGLE PHASE PANELBOARD SCHEDULE		PANEL DESIGNATION: TYPICAL TENANT PANEL		
MAIN LUGS: 125A, 2P		RECESSED		WIRE: 3		
KVA LOAD	LOAD CENTER	VOLTS: 120/240	PHASE: 1		KVA LOAD	
4.0	RANGE	1	2P	2	BEDROOM	1.2
4.0		3	2P	2	BEDROOM	1.2
1.5	REFRIGERATOR	5	2P	2	BEDROOM	1.4
1.5	COUNTER OUTLETS & RANGE HOOD	7	2P	2	BATHROOM OUTLET	1.5
1.5	COUNTER OUTLETS	9	2P	2	BATHROOM OUTLET	1.5
1.5	COUNTER OUTLETS	11	2P	2	LIGHTING	1.5
1.5	COUNTER OUTLET	13	2P	2	OUTLETS	1.5
1.5	COUNTER OUTLET	15	2P	2	OUTLETS	1.0
1.5	COUNTER OUTLET	17	2P	2	SPARE	
.80	OUTLET	19	2P	2		
	SPARE	21	2P	2		
1.5	WASHER	23	2P	2	SPARE	
3.0	DRYER	25	2P	2		
	SPACE	27	2P	2		
TOTAL CONN. LOAD 37.4 KVA				TOTAL DEM. LOAD _____		

* - E.C. SHALL PROVIDE ARC FAULT CIRCUIT INTERRUPTER CIRCUIT BREAKER.
 ** - PROVIDE FOR H.C. 3 BEDROOM FLAT ONLY. SPACE IN ALL OTHER UNITS.
 *** - PROVIDE FOR H.C. 3 BEDROOM T.H. ONLY. SPACE IN ALL OTHER UNITS.

NOTES:
 1. SEE DWG E3.0 FOR LIGHTING FIXTURE SCHEDULE.



DETAILS, LEGEND AND SCHEDULES

E2.0