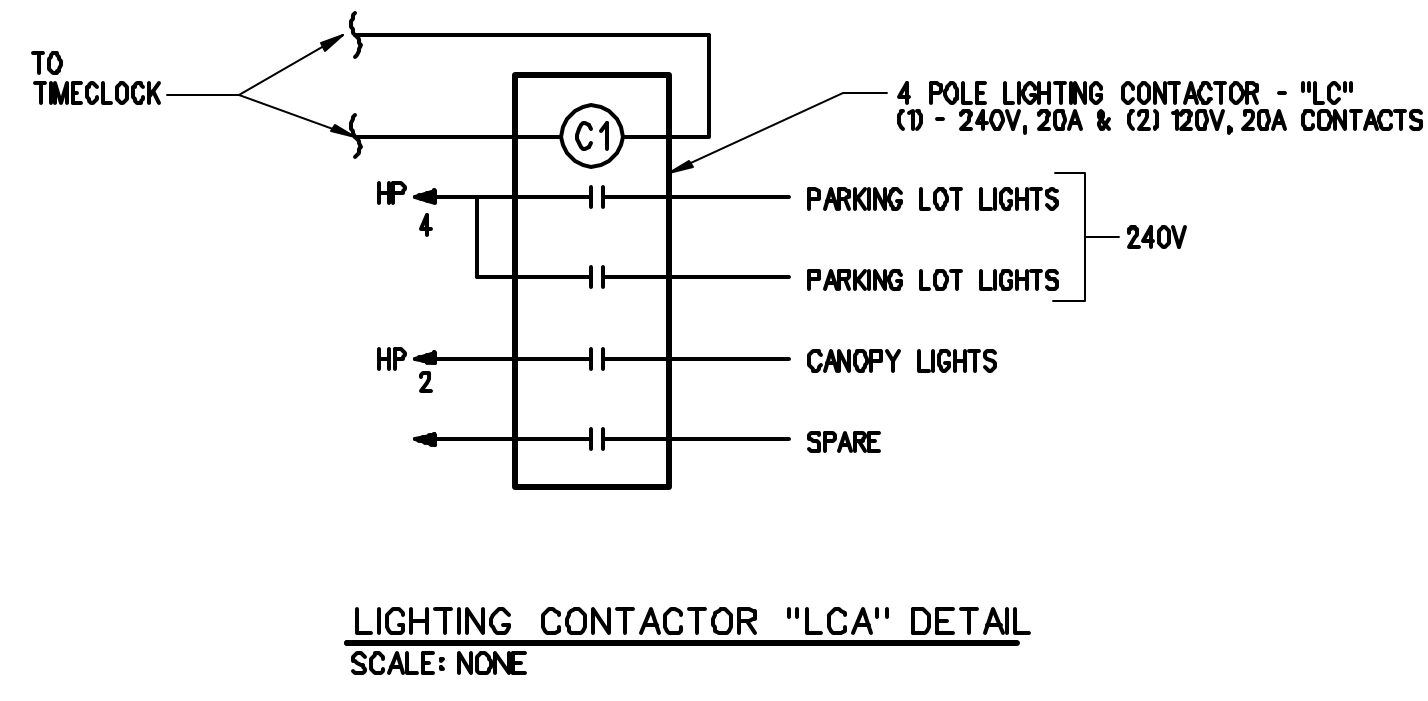
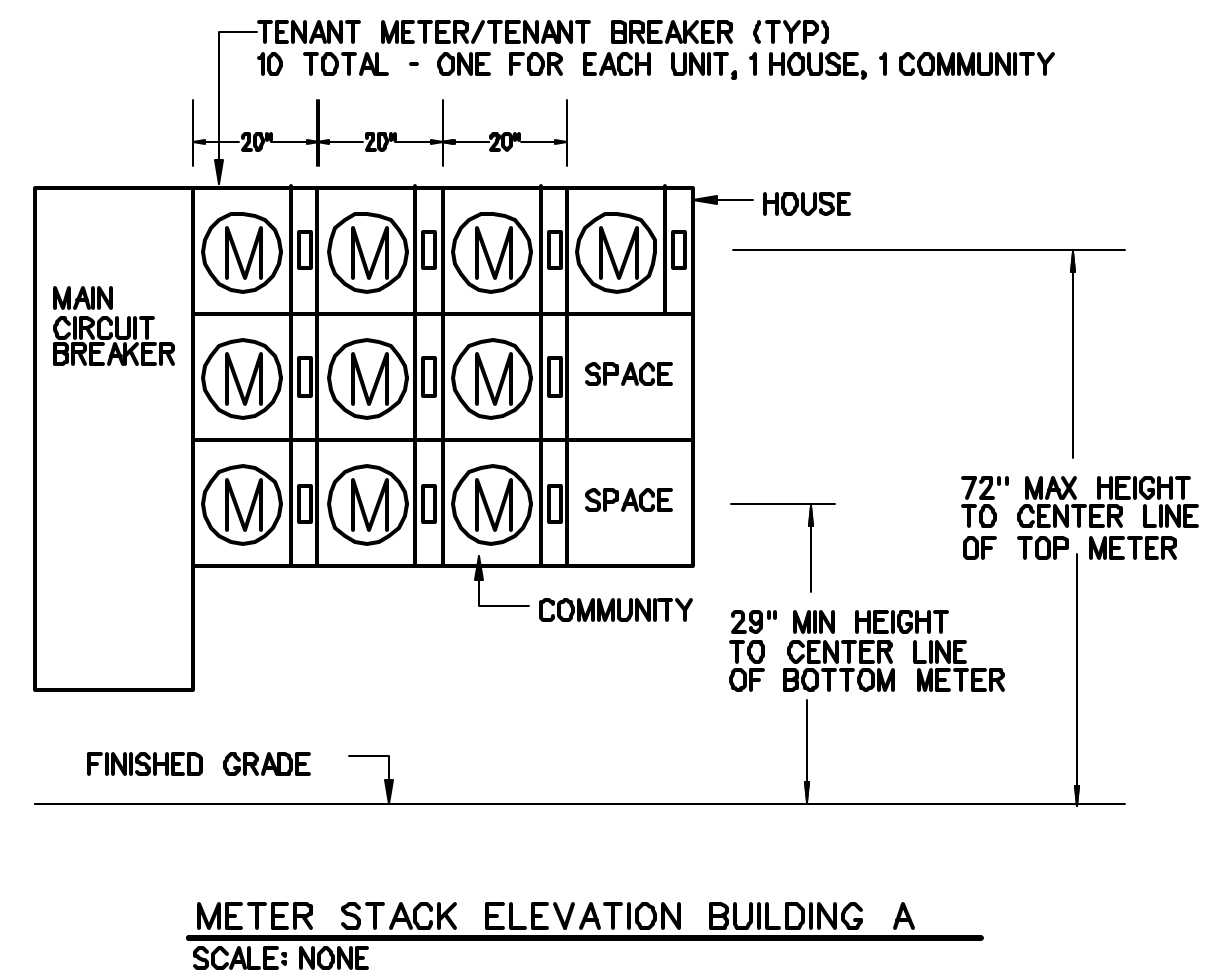
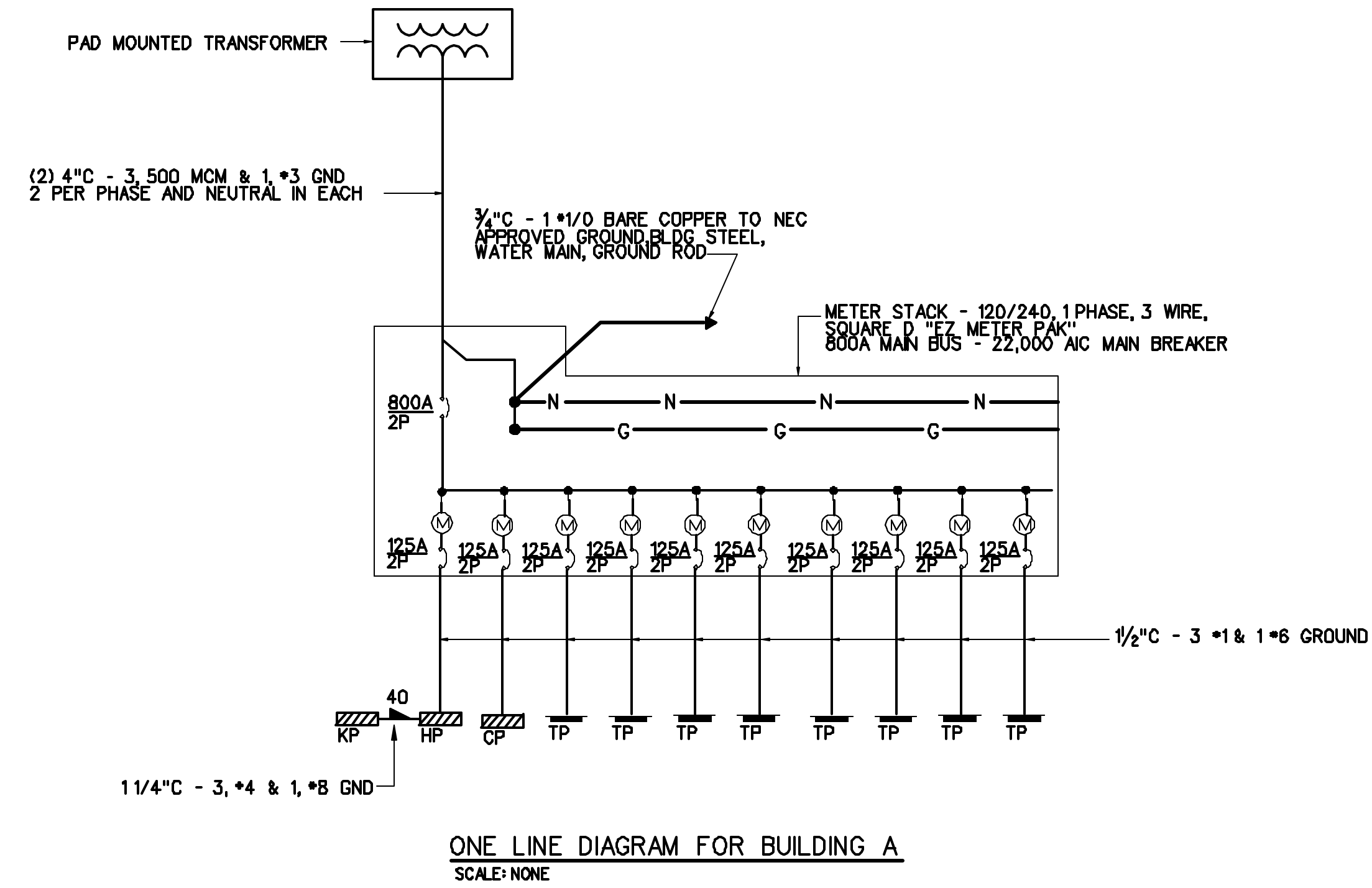


LIGHTING FIXTURE SCHEDULE

TYPE	DESCRIPTION	LAMPS QUANTITY & TYPE	REMARKS
A	VISA *CB3108-QS	2 - 26W CF	WALL MOUNTED - RM 124 - PAINTED FINISH COLOR BY ARCHITECT.
B	FOCAL POINT *FEVS-PL-2T8-1C-120-S-C24-TS-4	2 - F32T8	CABLE MOUNT
C	LIGHTOLIER *6706MS213U	2 - 13W QUAD TUBE CF	SURFACE MOUNT - RM 113
D	VISA *CB5120-1Q26-BA-PT	1 - 26W QUAD TUBE CF	WALL MOUNT - RM 113
E	SURE-LITES *CCX-7-O-R-WH	LED'S FURN. W/ FIXT.	UNIVERSAL SINGLE OR DOUBLE FACE
F	HAMPSTEAD *HMS CORNER	1 - 100W	WALL MOUNT - RM 104 - IN CORNER
G	FOCAL POINT *FV2S-PS-2T5-1C-120-S-C24-TS-4	2 - T5	DIRECT/INDIRECT - RM 104 - CABLE MOUNT
H	LIGHTOLIER *5473PB	2 - 25W T8	WALL MOUNT ABOVE MIRROR
J	FORECAST *F3222-12E1	2 - 25W T8	WALL MOUNT ABOVE MIRROR
K	LIGHTOLIER *PL4-M-P10-L-S-232-120-HI	2 - F32T8	SURFACE MOUNT
L	PROGRESS *P7307-60	1 - 32W FC12T9	SURFACE MOUNTED
M	PROGRESS *P7376-30	2 - 13W CF	SURFACE MOUNTED - KITCHEN
N	PROGRESS *P7014-30	2 - G8 T5	UNDERCABINET LIGHTS
P	PROGRESS *P7312-30	2 - 75W MED. BASE	SURFACE MOUNTED - BEDROOM
Q	PROGRESS *P7128-30	1 - F20T12	WALL MOUNT ABOVE MIRROR - UNIT
R	PROGRESS *7375-30	2 - 7W TT CF	SURFACE MOUNT
S	PROGRESS *P7313-10WB	2 - 13W TWIN TUBE CF	SURFACE MOUNTED - ENTRY HALL & OPEN CIRCULATION
T	PROGRESS *P7303-30	2 - 9W TWIN TUBE CF	SURFACE MOUNTED - EXTERIOR CEILING - SEE DETAIL ON ARCHITECTURAL PLANS
U	PROGRESS *7312-10	2 - 13W TWIN TUBE CF	SURFACE MOUNTED - DINING
V	DAY-BRITE *NL 115 120	1 - 15W T12	SURFACE MOUNTED - CLOSET, LAUNDRY
W	LIGHTOLIER *5003WH218U	2 - 18W QUAD - 4 PIN	SURFACE MOUNT
X	LSI *F39SERIES-120-TS-MONOPPOINT	1 - F39/36BX	SURFACE MOUNT
Y	METALUX *VT2-232-120-EB82	2 - F32T8	SURFACE MOUNT
Z	PROGRESS *P83-AT/P8086 TRIM	1 - 13W CF	RECESSED IN SOFFIT
CC	METALUX *WS-232A-120-EB8	2 - F32T8	SURFACE MOUNTED
DD	PRESCOLITE *WB-4	1 - 75W A19	MOUNT IN ELEVATOR PIT
EE			RECESSED IN RETAINING WALL

SYMBOL LEGEND

- LOAD CENTER, 120/240V, 1PHS, 3WIRE
- ELECTRIC MOTOR DRIVEN EQUIPMENT, HP SHOWN
- MANUAL MOTOR STARTER SWITCH WITH THERMAL OVERLOAD DEVICE, MOUNTED AT UNIT
- JUNCTION BOX - "H" DENOTES RANGE HOOD, "D" DENOTES DISPOSAL
- EXHAUST FAN WIRED E.C., FURNISHED, INSTALLED AND DUCTED BY M.C.
- COMBINATION MOTOR STARTER - WITH AUXILIARY CONTACTS AND HAND-OFF-AUTO SWITCH AND RED RUN LIGHT
- UNFUSED DISCONNECT SWITCH - 250 VOLT SIZE & NO. POLES AS NOTED.
- LIGHTING FIXTURES- CAPITAL LETTERS DENOTE TYPE AS PER LIGHTING FIXTURE SCHEDULE. LOWER CASE LETTERS INDICATE SWITCH CONTROL.
- RACEWAY & WIRING OR NM CABLE RUN CONCEALED IN WALLS/CEILINGS.
- RACEWAY & WIRING RUN EXPOSED
- RACEWAY & WIRING RUN CONCEALED UNDER FLOOR
- HOME RUN TO PANEL- ARROWS INDICATE QUANTITY OF CIRCUITS- NUMERALS DENOTE CIRCUIT NUMBERS
- SINGLE POLE SWITCH, 120 VOLT, 20 AMP, RESIDENTIAL GRADE, GROUNDING TYPE, MOUNT 48" AFF. 3-3-WAY, 2-PILOT LOWER CASE LETTER INDICATES FIXTURE OR CONTROLLED LOAD. PILOT LIGHT SWITCHES SHALL BE PROVIDED W/ ENGRAVED NAMEPLATE IDENTIFYING USE.
- GAS BURNER SAFETY SWITCH - PROVIDE WITH RED PLATE
- DUPLEX RECEPTACLE- 20A, 125V, RESIDENTIAL GRADE, GROUNDING TYPE AND MATCHING IVORY PLATE - MOUNT 18" AFF. "R" DENOTES REFRIGERATOR - "DW" DENOTES DISHWASHER
- DUPLEX RECEPTACLE- 20A, 125V, RESIDENTIAL GRADE, GROUNDING TYPE AND MATCHING IVORY PLATE - MOUNT 18" AFF. BOTTOM RECEPTACLE SWITCHED
- DUPLEX RECEPTACLE- GROUND FAULT OUTLET, 20A, 125V- WITH MATCHING IVORY PLATE FURNISHED W/ OUTLET. FLUSH MOUNTED 45" AFF EXCEPT AS NOTED.
- RANGE OUTLET 50 AMP, 250 VOLT, GROUNDING TYPE FLUSH MOUNTED 18" AFF
- DRYER OUTLET, 30 AMP, 250V, GROUNDING TYPE FLUSH MOUNTED, 18" AFF.
- WEATHERPROOF
- FIRE ALARM CONTROL PANEL
- DUCT MOUNTED SMOKE DETECTOR
- SYSTEM CONNECTED SMOKE DETECTOR
- STROBE ONLY IN BATHROOM. NUMERAL DENOTES CANDELA RATING.
- SYSTEM CONNECTED FIXED TEMPERATURE HEAT DETECTOR
- SINGLE STATION SMOKE DETECTOR, PHOTOELECTRIC TYPE, NON-SYSTEM CONNECTED
- FIRE ALARM PULL STATION - MOUNT 48" AFF
- FIRE ALARM AUDION/VISUAL, MOUNT 6'-8" AFF - NUMERAL DENOTES CANDELA RATING
- TELEPHONE CONNECTION MOUNT 18" AFF - W/1-4 PAIR CABLE TO TEL. BACKBOARD
- TV OUTLET DEVICE AND INDIVIDUAL CABLE BACK TO CTV ENTRANCE LOCATION WALL PLATE AND CABLE BY E.C. MOUNT AT 18" AFF
- TEL/DATA OUTLET DEVICE AND INDIVIDUAL CAT 5E AND 1-4 PAIR CABLE BACK TO TELEPHONE BACKBOARD - WALL PLATE AND CABLE BY E.C. MOUNT AT 18" AFF
- PHOTOCELL
- LIGHTING CONTACTOR
- TIMECLOCK
- SELF CONTAINED EMERGENCY LIGHTING UNIT W/ 2 HEADS. PRESCOLITE *ESB7-12V, 12V D.C., 50 WATTS FOR 90 MINUTES.
- SINGLE REMOTE EMERGENCY LIGHTING HEAD 12 VOLTS DC, WALL MOUNT ON PLATE 8" BELOW CEILING. PRESCOLITE *PELH209
- ROUGH-IN FOR SPEAKER J-BOX WITH CONDUIT TO COPY 121 - OVER COPIER
- SPRINKLER SYSTEM TAMPER SWITCH
- SPRINKLER SYSTEM FLOW SWITCH
- INTERCOM SYSTEM MASTER STATION
- ELECTRIC DOOR OPENER/CLOSER
- PADDLE SWITCH



GRANT & MELLEEN SREET
 PARKSIDE NEIGHBORHOOD CENTER & AFFORDABLE HOUSING
 PEOPLES REGIONAL OPPORTUNITY PROGRAM
 PORTLAND, MAINE

TFH ARCHITECTS
 100 COMMERCIAL STREET
 PORTLAND MAINE 04101
 TELEPHONE 207 775 6141
 ARCHITECTURE PLANNING

CONSULTANTS:
 CIVIL: Peabody & Gray
 170 US Route One
 Portland, ME 04106
 207-791-0262
 STRUCTURAL: Structural Design Consulting
 Plus-Better-Less
 Portland, ME 04105-2448
 207-478-0020
 MECHANICAL: Whitney Engineering
 10 Carleton Place
 Portland, ME 04102
 207-855-2821
 ELECTRICAL: BSA&B Engineering
 7 Seward Road
 Portland, ME 04332
 207-868-8470

REVISIONS:
 DATE: 01/28/04
 PROJECT No. 0114
 DRAWN BY: SPD
 CHECKED BY: WBSJR
 SCALE: AS NOTED

SHEET TITLE:
 DETAILS, LEGEND
 AND SCHEDULES

BUILDING A
E3.0