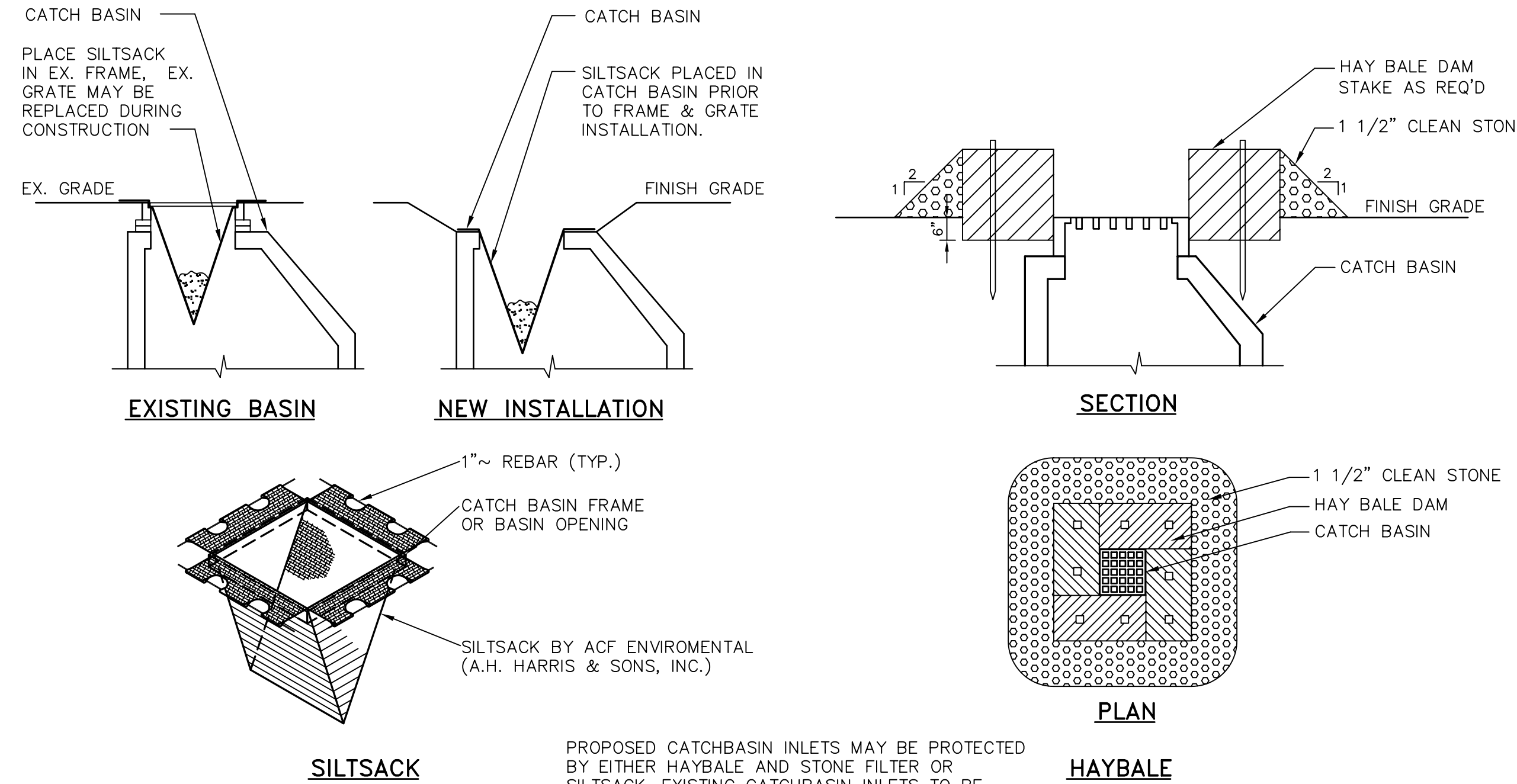


- NOTES:
1. MAINTAIN EXIT IN A CONDITION THAT WILL PREVENT TRACKING OF SEDIMENT ONTO PUBLIC RIGHT OF WAY AND REMAINDER OF SITE. IF WASHING IS REQUIRED PREVENT SEDIMENT FROM ENTERING WATERWAYS, DITCHES OR STORM DRAINS.
 2. REMOVE STABILIZED CONSTRUCTION EXIT TO FINISH ROAD CONSTRUCTION & PAVEMENT.

3 STABILIZED CONSTRUCTION EXIT DETAIL

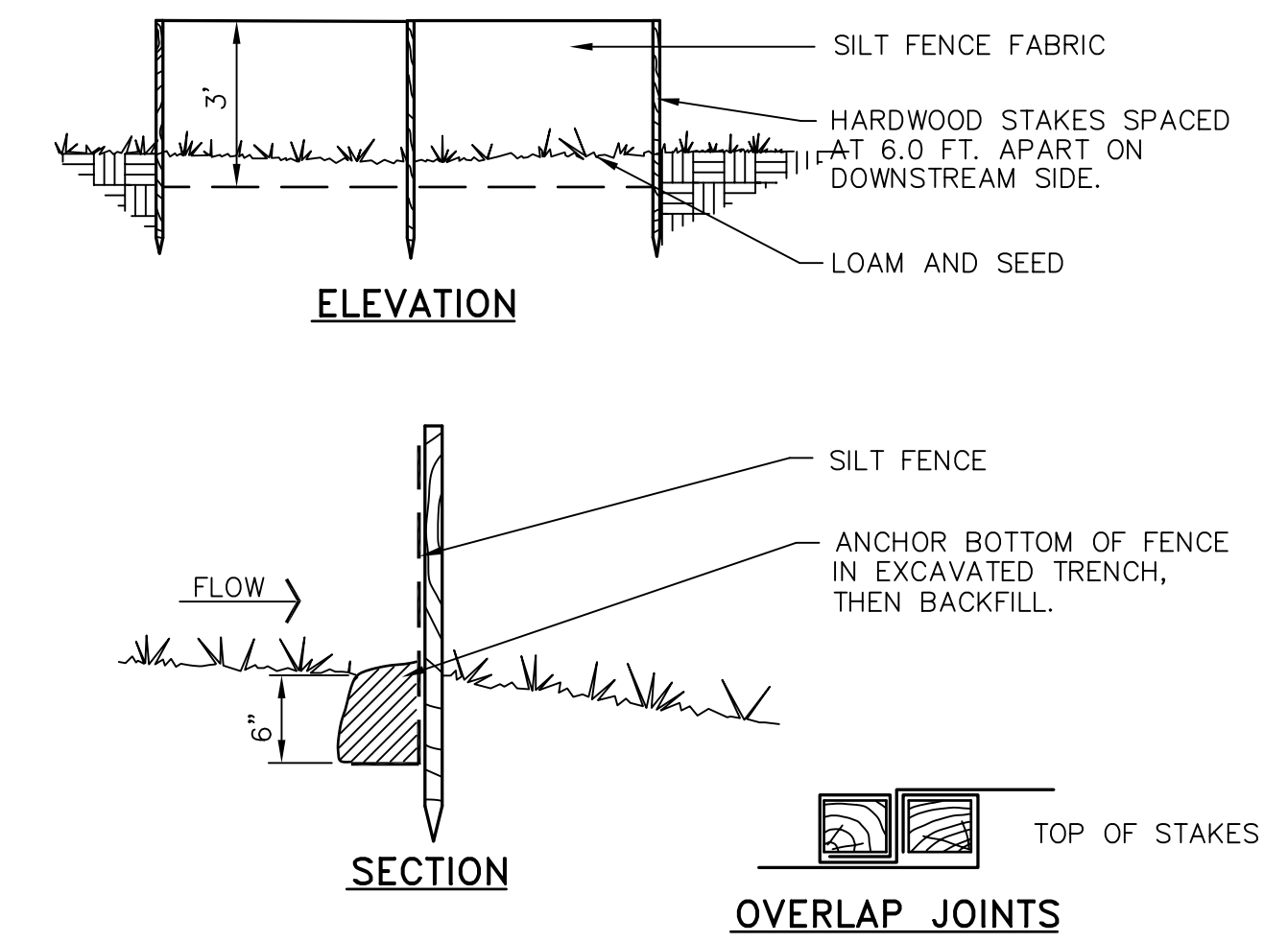
NOT TO SCALE



PROPOSED CATCHBASIN INLETS MAY BE PROTECTED BY EITHER HAYBALE AND STONE FILTER OR SILTSACK. EXISTING CATCHBASIN INLETS TO BE PROTECTED BY SILTSACK.

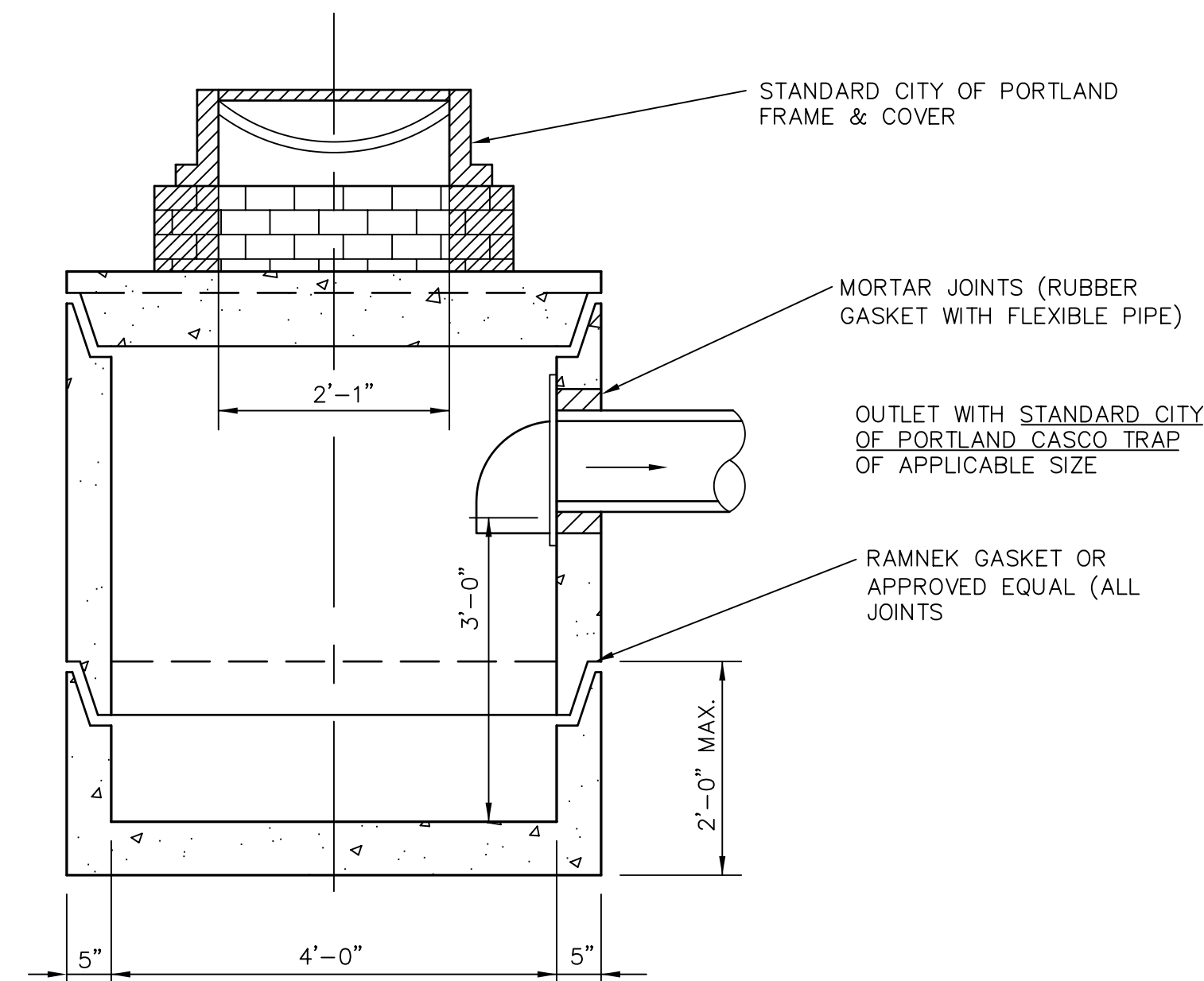
2 CATCH BASIN PROTECTION

NOT TO SCALE



1 SILT FENCE DETAIL

NOT TO SCALE



5 STANDARD CITY OF PORTLAND TYPE "E" CATCH BASIN

NOT TO SCALE

4 TYPE "A" MANHOLE

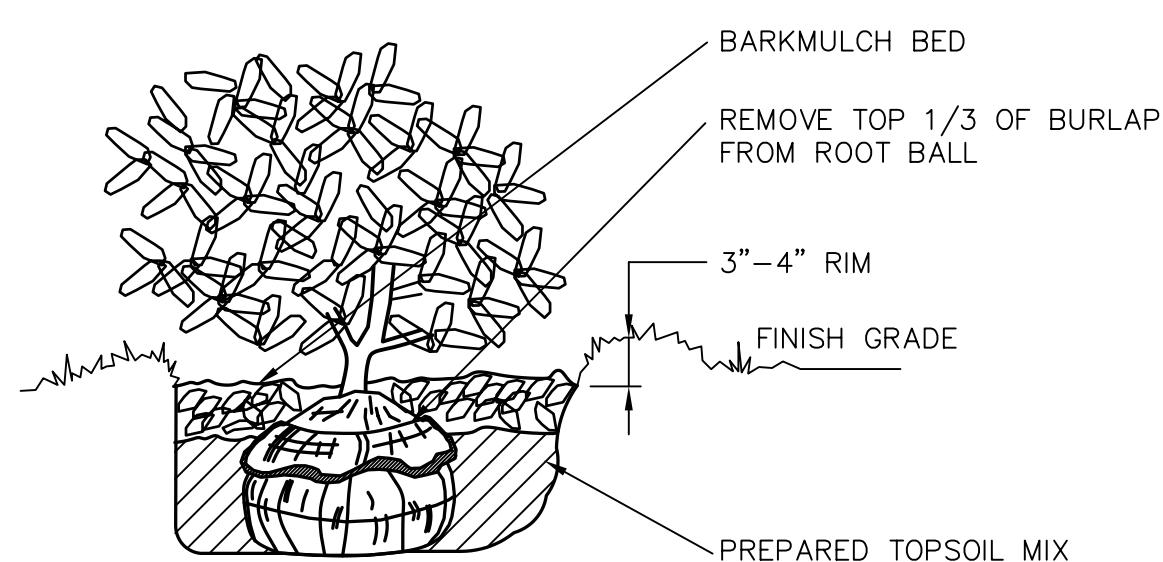
PLAN VIEW

PLAN OF CONCRETE BASE

SECTION B-B

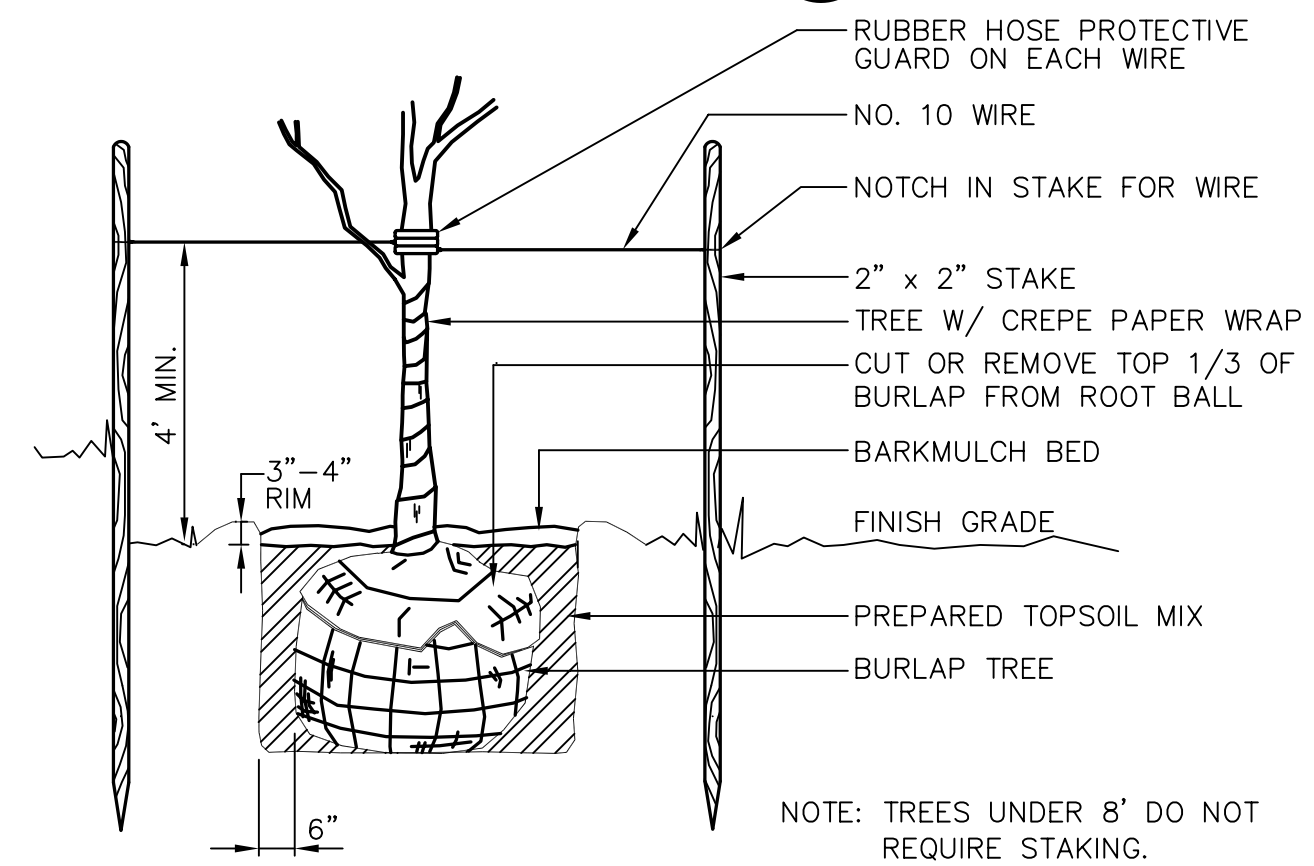
SECTION A-A

SCALE: 1/2"=1'-0"



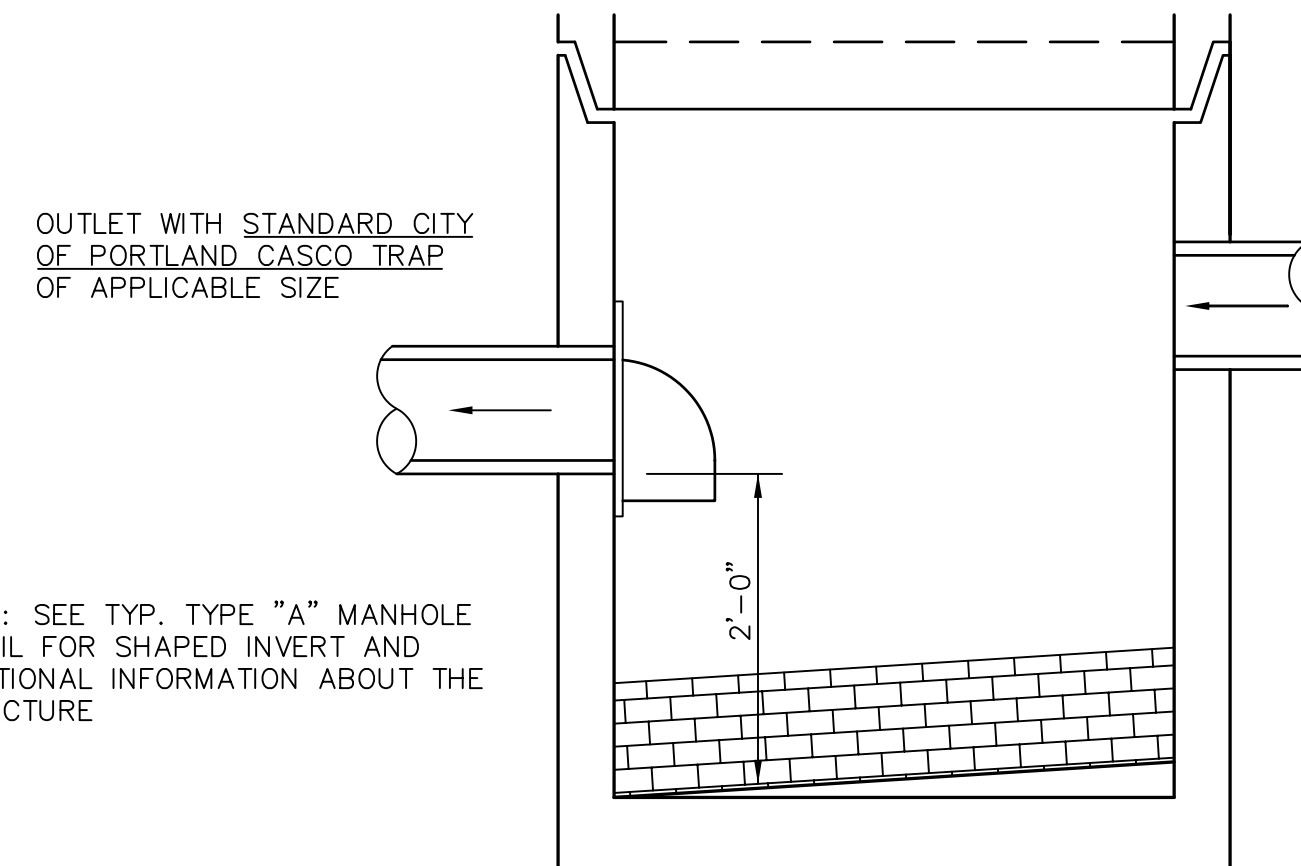
8 SHRUB PLANTING DETAIL

NOT TO SCALE



7 TREE PLANTING DETAIL

NOT TO SCALE



6 DRAIN MANHOLE #1 WITH SUMP

NOT TO SCALE

REV.	DATE	DESCRIPTION
3	1/30/04	REV'D PER FINAL REVIEW COMMENTS
2	1/8/04	REV'D UTILITIES AND PER FINAL REVIEW COMMENTS
1	12/4/02	REV'D PER CITY REVIEW COMMENTS

	PEOPLES REGIONAL OPPORTUNITY PROGRAM 510 CUMBERLAND AVE. PORTLAND ME GRANT STREET GRANT STREET, PORTLAND
	DETAILS
SCALE: AS SHOWN DATE: DEC. 4, 2002 PROJECT: 01404	DRN BY: JDC DESG BY: TSG CHK BY: TSG