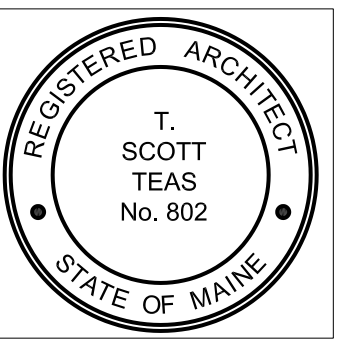


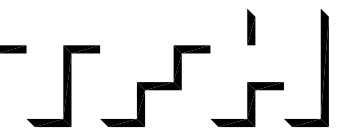
T:\00_TFH Projects\PC\0101_Mellen_GrandDrawings\Plan\01\A1.3_3rd_Floor_Reflecting_Ceiling_Plan_200604.dwg, 24036 REFLECTING CEILING PLAN, 2/20/04, 6:15:32 PM



© TFH ARCHITECTS



GRANT & MELLEEN SREET
PARKSIDE NEIGHBORHOOD CENTER & AFFORDABLE HOUSING
PEOPLE'S REGIONAL OPPORTUNITY PROGRAM
PORTLAND, MAINE



TFH ARCHITECTS
 100 COMMERCIAL STREET
 PORTLAND MAINE 04101
 TELEPHONE 207 775 6141
 ARCHITECTURE PLANNING

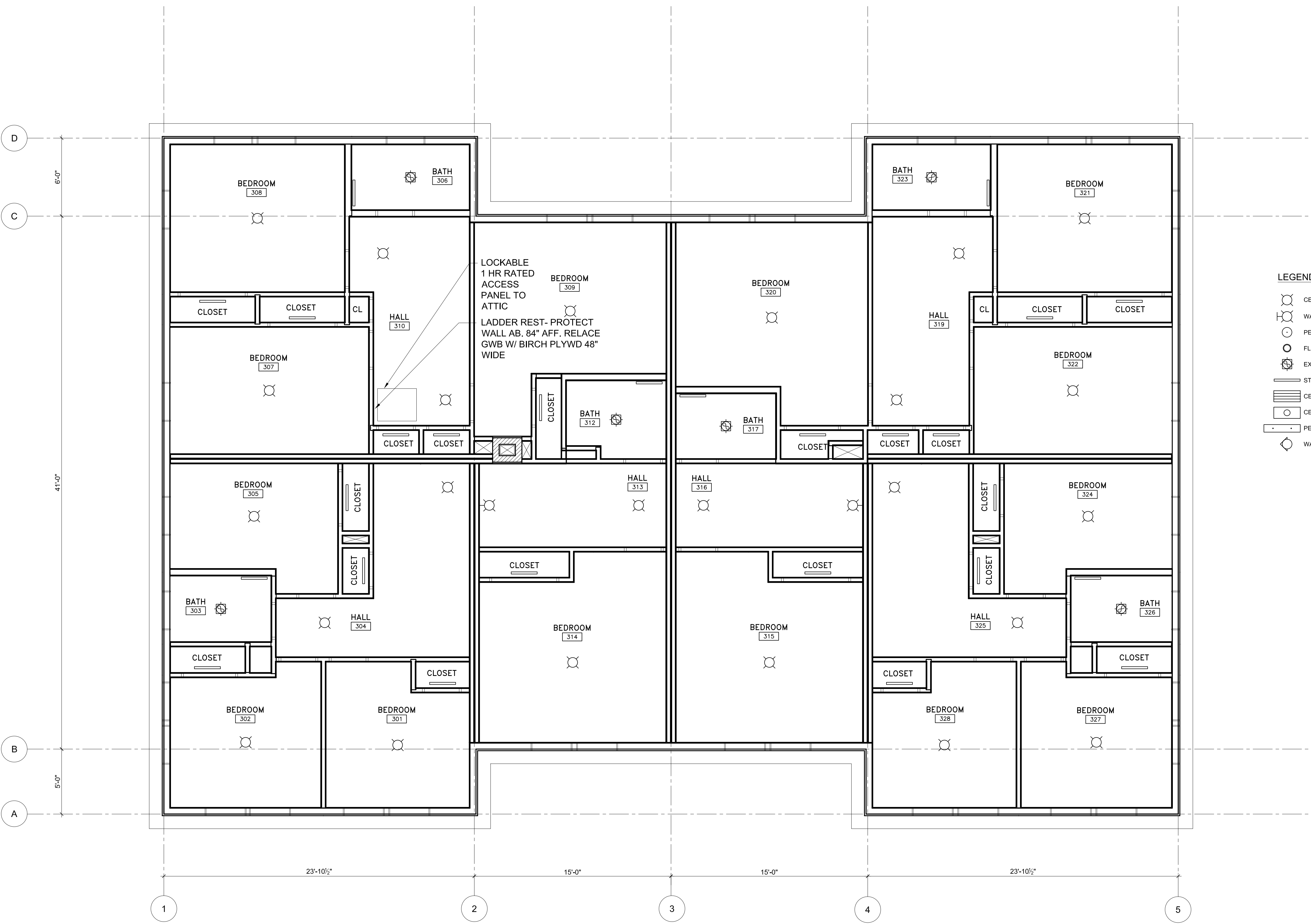
CONSULTANTS:
CIVIL:
 Pritham & Greer
 179 US Route One
 Farmington, ME 04105
 207-781-0242
STRUCTURAL:
 Structural Design Consulting
 Five Baskin Lane
 Farmington, ME 04105-2448
 207-878-8030
MECHANICAL:
 Whitney Engineering
 10 Danforth Place
 Portland, ME 04102
 207-833-2921
ELECTRICAL:
 Bennett Engineering
 7 Bennett Road
 Freeport, ME 04032
 207-865-0475

REVISIONS:

DATE: 01/29/04
 PROJECT No. 0114
 DRAWN BY: DAM/SA
 CHECKED BY: TST
 SCALE: AS NOTED

SHEET TITLE:
 3RD FLOOR
 REFLECTED
 CEILING PLAN

BUILDING B
A1.8



- LEGEND:**
- CEILING MOUNTED LIGHT FIXTURE
 - WALL MOUNTED LIGHT FIXTURE
 - PENDANT MOUNTED LIGHT FIXTURE
 - FLUORESCENT DOWNLIGHT
 - EXHAUST FAN AND LIGHT FIXTURE
 - STRIP FLUORESCENT LIGHT FIXTURE
 - CEILING MOUNTED FLUORESCENT STRIP LIGHT
 - CEILING MOUNTED FLUORESCENT TROFFER
 - PENDANT MOUNTED FLUORESCENT STRIP LIGHT
 - WALL WASHER

1 1ST FLOOR REFLECTED CEILING PLAN BUILDING B
 1/4" = 1'-0"

