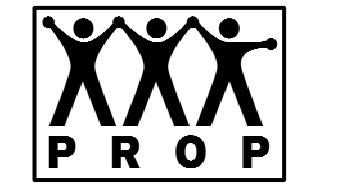
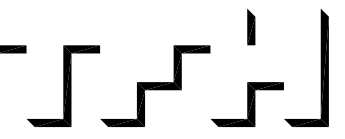


TFH ARCHITECTS



GRANT & MELLEEN SREET
PARKSIDE NEIGHBORHOOD CENTER & AFFORDABLE HOUSING
PEOPLE'S REGIONAL OPPORTUNITY PROGRAM
PORTLAND, MAINE



TFH ARCHITECTS
100 COMMERCIAL STREET
PORTLAND MAINE 04101
TELEPHONE 207 775 6141
ARCHITECTURE PLANNING

CONSULTANTS:

CIVIL:
Pritham & Greer
170 US Route One
Farmport, ME 04105
207-785-0242

STRUCTURAL:
Structural Design Consulting
Five Baskin Lane
Farmport, ME 04105-2448
207-785-0230

MECHANICAL:
Whitney Engineering
10 Danforth Place
Portland, ME 04102
207-833-2921

ELECTRICAL:
Bennett Engineering
7 Bennett Road
Freeport, ME 04032
207-865-0475

REVISIONS:

DATE: 01/29/04

PROJECT No. 0114

DRAWN BY: DAM/SA

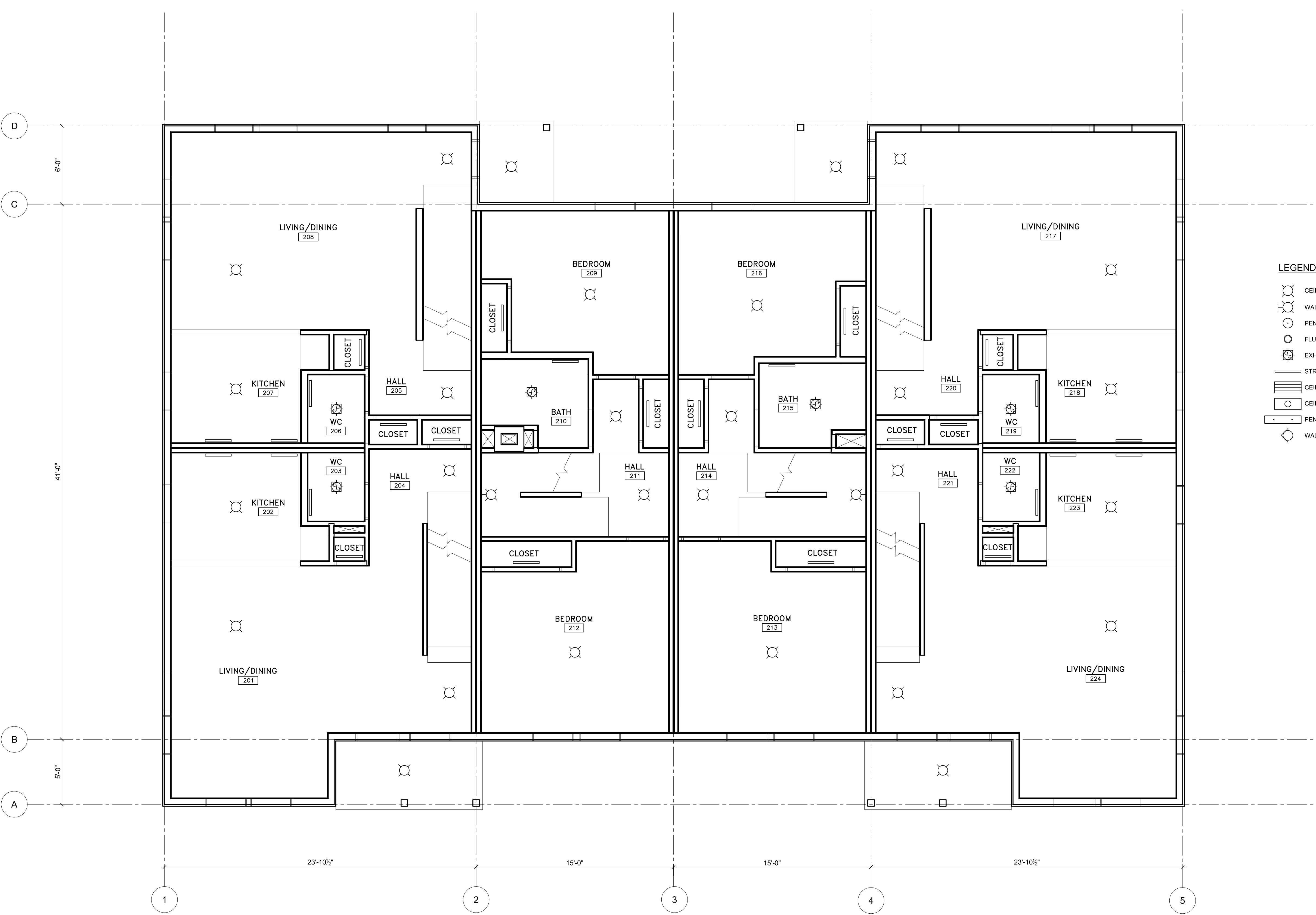
CHECKED BY: TST

SCALE: AS NOTED

SHEET TITLE:
2ND FLOOR
REFLECTED
CEILING PLAN

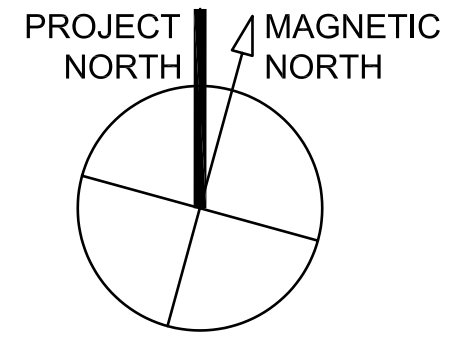
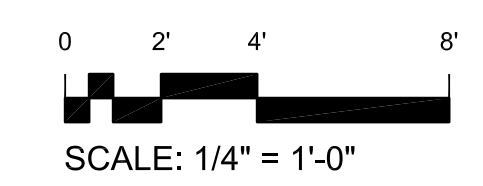
BUILDING B

A1.7



- LEGEND:**
- CEILING MOUNTED LIGHT FIXTURE
 - WALL MOUNTED LIGHT FIXTURE
 - PENDANT MOUNTED LIGHT FIXTURE
 - FLUORESCENT DOWNLIGHT
 - EXHAUST FAN AND LIGHT FIXTURE
 - STRIP FLUORESCENT LIGHT FIXTURE
 - CEILING MOUNTED FLUORESCENT STRIP LIGHT
 - CEILING MOUNTED FLUORESCENT TROFFER
 - PENDANT MOUNTED FLUORESCENT STRIP LIGHT
 - WALL WASHER

1 2ND FLOOR REFLECTED CEILING PLAN BUILDING B
1/4" = 1'-0"



T:\00_TFH Projects\PH00114_Mellen GrantDrawings\Plan0114_A1.7_2ndFL_Ceiling Plan_2002004_4.2608.rvt