

TFH ARCHITECTS



GRANT & MILLEN SREET
PARKSIDE NEIGHBORHOOD CENTER & AFFORDABLE HOUSING
PEOPLE'S REGIONAL OPPORTUNITY PROGRAM
PORTLAND, MAINE

TFH ARCHITECTS
100 COMMERCIAL STREET
PORTLAND MAINE 04101
TELEPHONE 207 775 6141
ARCHITECTURE PLANNING

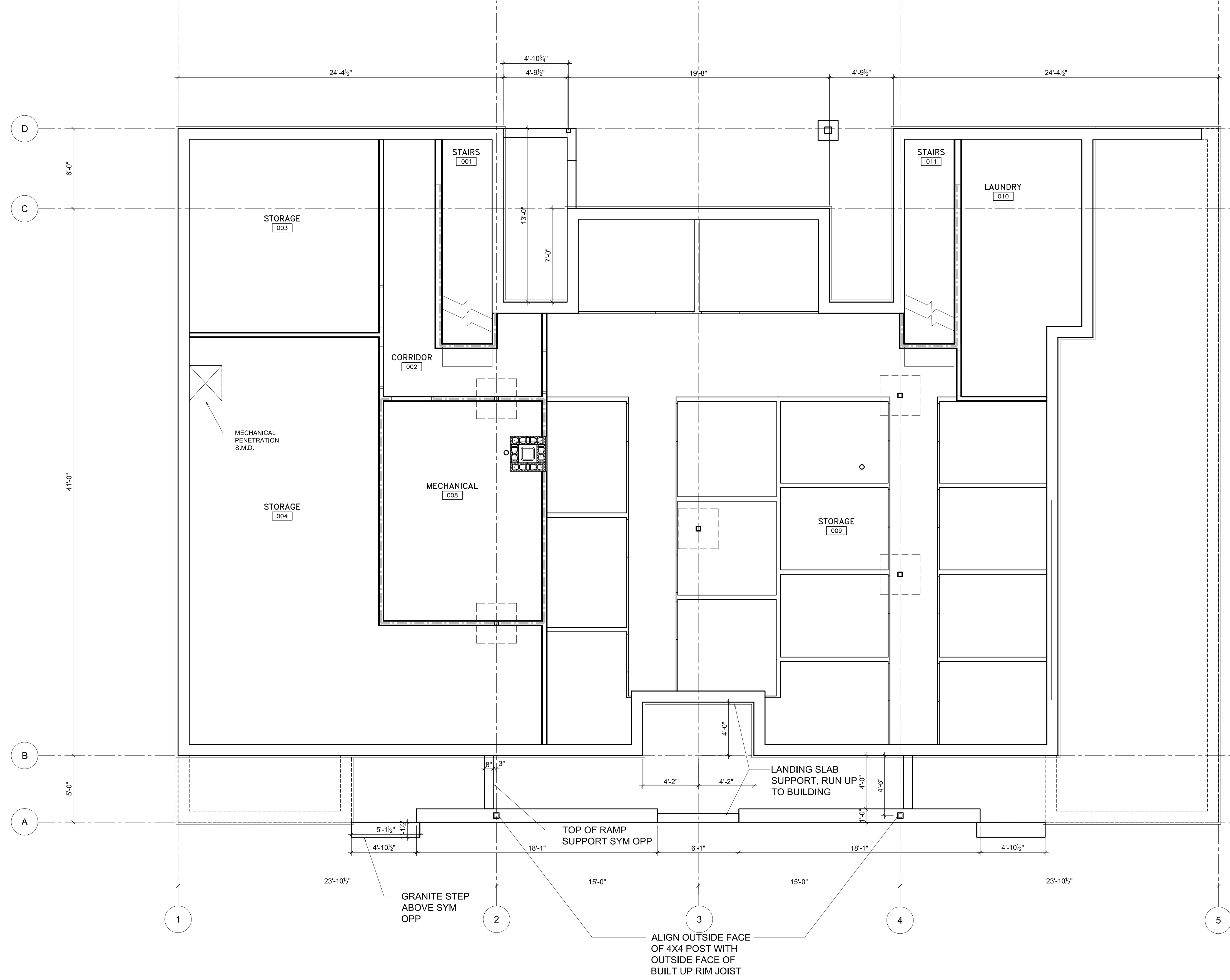
CONSULTANTS:
CIVIL:
Prakash & Greer
170 US Route One
Farmington, ME 04105
207-783-6242
STRUCTURAL:
Structural Design Consulting
Five Baskin Lane
Farmington, ME 04105-2448
207-878-8030
MECHANICAL:
Whitney Engineering
10 Danforth Place
Portland, ME 04102
207-833-2921
ELECTRICAL:
Bennett Engineering
7 Bennett Road
Freeport, ME 04032
207-865-9475

REVISIONS:

DATE: 01/29/04
PROJECT No. 0114
DRAWN BY: DAM/SA
CHECKED BY: TST
SCALE: AS NOTED

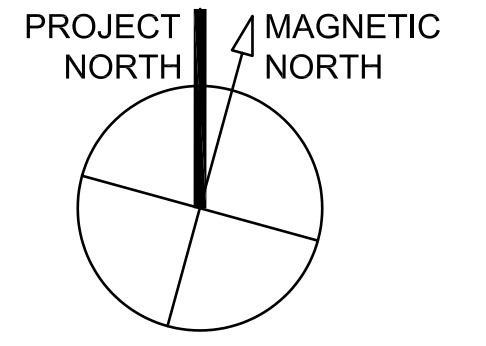
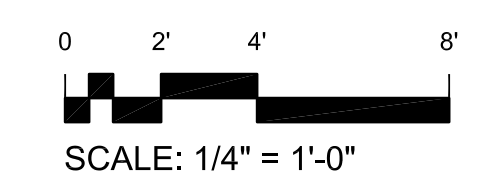
SHEET TITLE:
BASEMENT REFLECTED
CEILING PLAN

BUILDING B
A1.5



- LEGEND:**
- CEILING MOUNTED LIGHT FIXTURE
 - WALL MOUNTED LIGHT FIXTURE
 - PENDANT MOUNTED LIGHT FIXTURE
 - FLUORESCENT DOWNLIGHT
 - EXHAUST FAN AND LIGHT FIXTURE
 - STRIP FLUORESCENT LIGHT FIXTURE
 - CEILING MOUNTED FLUORESCENT STRIP LIGHT
 - CEILING MOUNTED FLUORESCENT TROFFER
 - PENDANT MOUNTED FLUORESCENT STRIP LIGHT
 - WALL WASHER

1 BASEMENT REFLECTED CEILING PLAN BUILDING B
1/4" = 1'-0"



T:\00_TFH Projects\PROP0114_Mellen Grant\Drawings\Plan0114_A1.5_BM_Bldg.dwg, 24/03/2004 09:43:30 PM