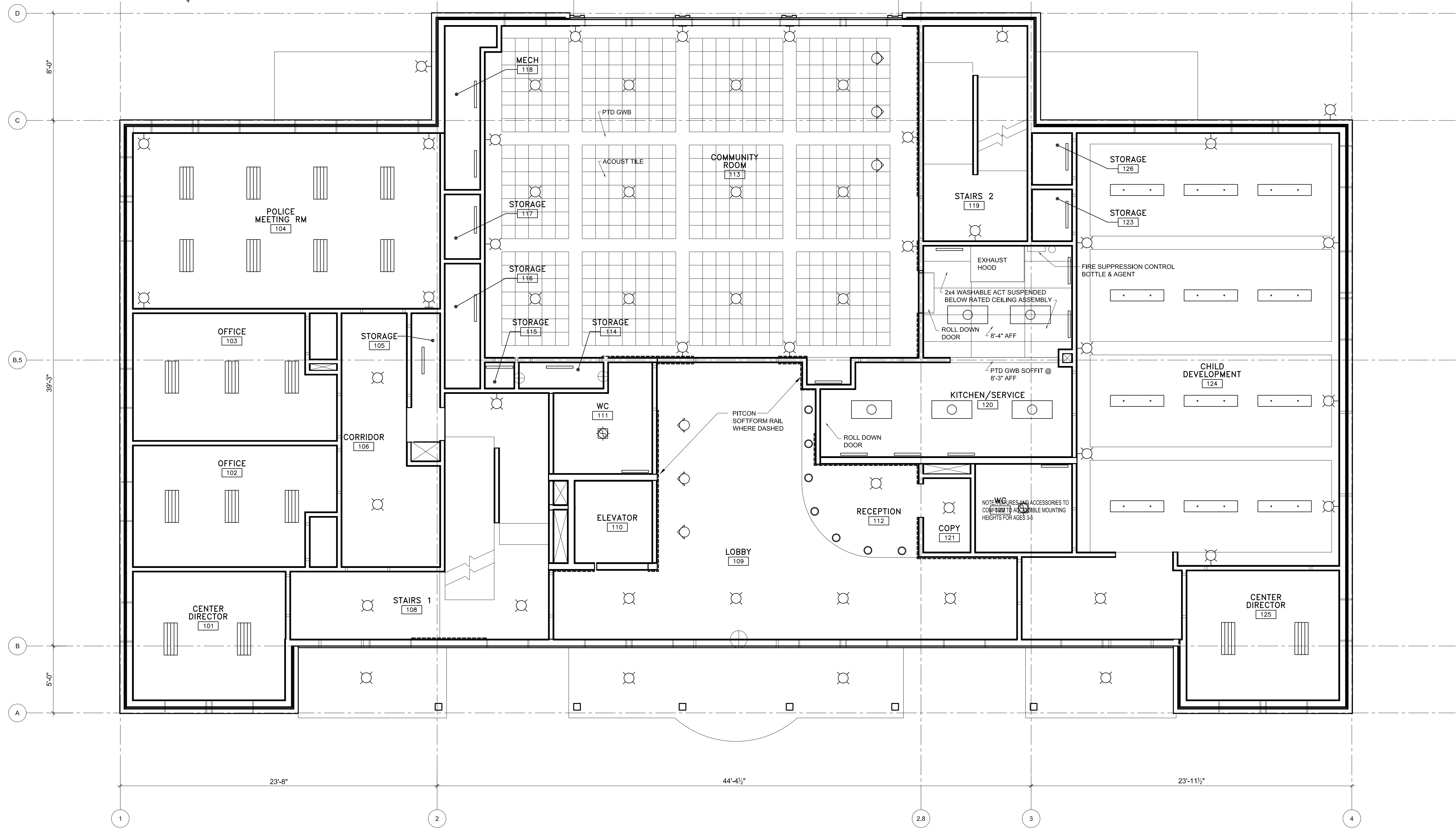
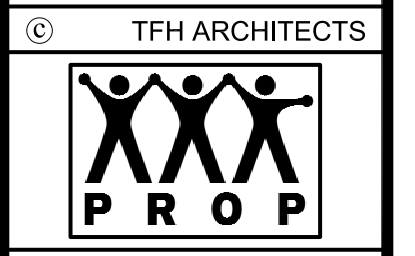
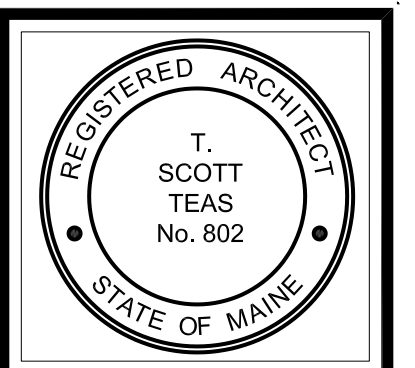
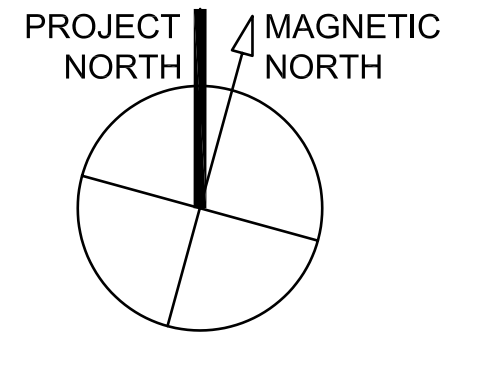
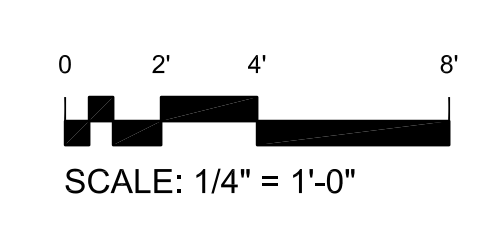


- LEGEND:**
- CEILING MOUNTED LIGHT FIXTURE
  - WALL MOUNTED LIGHT FIXTURE
  - PENDANT MOUNTED LIGHT FIXTURE
  - FLUORESCENT DOWNLIGHT
  - EXHAUST FAN AND LIGHT FIXTURE
  - STRIP FLUORESCENT LIGHT FIXTURE
  - CEILING MOUNTED FLUORESCENT STRIP LIGHT
  - CEILING MOUNTED FLUORESCENT TROFFER
  - PENDANT MOUNTED FLUORESCENT STRIP LIGHT
  - WALL WASHER



1 1ST FLOOR REFLECTED CEILING PLAN BUILDING A  
1/4" = 1'-0"



GRANT & MILLEN SREET  
PARKSIDE NEIGHBORHOOD CENTER & AFFORDABLE HOUSING  
PEOPLE'S REGIONAL OPPORTUNITY PROGRAM  
PORTLAND, MAINE

T.F.H. ARCHITECTS  
100 COMMERCIAL STREET  
PORTLAND MAINE 04101  
TELEPHONE 207 775 6141  
ARCHITECTURE PLANNING

**CONSULTANTS:**  
**CIVIL:** Prakash & Greer  
170 US Route One  
Farmington, ME 04105  
207-785-6242  
**STRUCTURAL:** Structural Design Consulting  
Five Baskin Lane  
Farmington, ME 04105-2448  
207-878-8030  
**MECHANICAL:** Whitney Engineering  
10 Danforth Place  
Portland, ME 04102  
207-833-2921  
**ELECTRICAL:** Bennett Engineering  
7 Barnwell Road  
Freeport, ME 04032  
207-865-9475

**REVISIONS:**

DATE: 01/29/04  
 PROJECT No. 0114  
 DRAWN BY: DAM/SA  
 CHECKED BY: TST  
 SCALE: AS NOTED

SHEET TITLE:  
1ST FLOOR REFLECTED CEILING PLAN

BUILDING A  
A1.6