

Addendum #3

To

Construction Documents

For

**The Parkside Neighborhood Center
and Affordable Housing
Mellen & Grant Streets,
Portland, Maine 04101**

February 25, 2004

TO:

Bidders of record

FROM:

TFH Architects
100 Commercial St.
Portland, Maine 04101

SUBJECT:

**The Parkside Neighborhood Center
And Affordable Housing**

CC:

Peoples Regional Opportunity Program
DeStefano & Associates
Maine State Housing Authority

This ADDENDUM supplements and amends the original Plans and Specifications dated January 29, 2004. This ADDENDUM is not a Change Order. It provides clarifications of or proposed changes to the Contract Documents. The Owner must approve all changes. A formal Change Order must be executed for any adjustments to the Contract Sum or the Contract Time

The purpose of this ADDENDUM is to respond to questions, provide coordination and clarification to the previous drawings and specifications.

PREVIOUS ADDENDUM

Addendum #1 dated 2/12/04
Addendum #2 dated 2/20/04

ATTACHMENTS TO THE ADDENDUM

- 3-1 Revised Drawing SKA 11, dated 2/20/04
- 3-2 Revised Drawing SKA 12, dated 2/20/04
- 3-3 Drawing SKA 13, dated 2/20/04
- 3-4 Drawing SKA 14, dated 2/20/04
- 3-5 Drawing SKA 15, dated 2/20/04

CHANGES TO THE SPECIFICATIONS

- 3-6 Section 04810 UNIT MASONRY ASSEMBLIES- REVISE section 2.1, paragraph B, #4 to read '8 inches nominal: 7 5/8" actual'.
- 3-7 Section 15400, Paragraph 2.3, C – ADD the following item;

Elevator Sump Pump

8 gpm @ 20 ft of Head, 1/3 HP, 115/60/1, 5 amps – Seewater ABS Robusta 33 with "Oil Smart" water pump switch, float switch, high level float switch, oil probes and cables. Provide alarm system electrical control panel with audible alarm, red beacon, oil present amber light, water smart alarm switch with 15' cord, 1/2" wire grips for alarm panel, cord mounting devise piping mount assembly for float and high water switch.

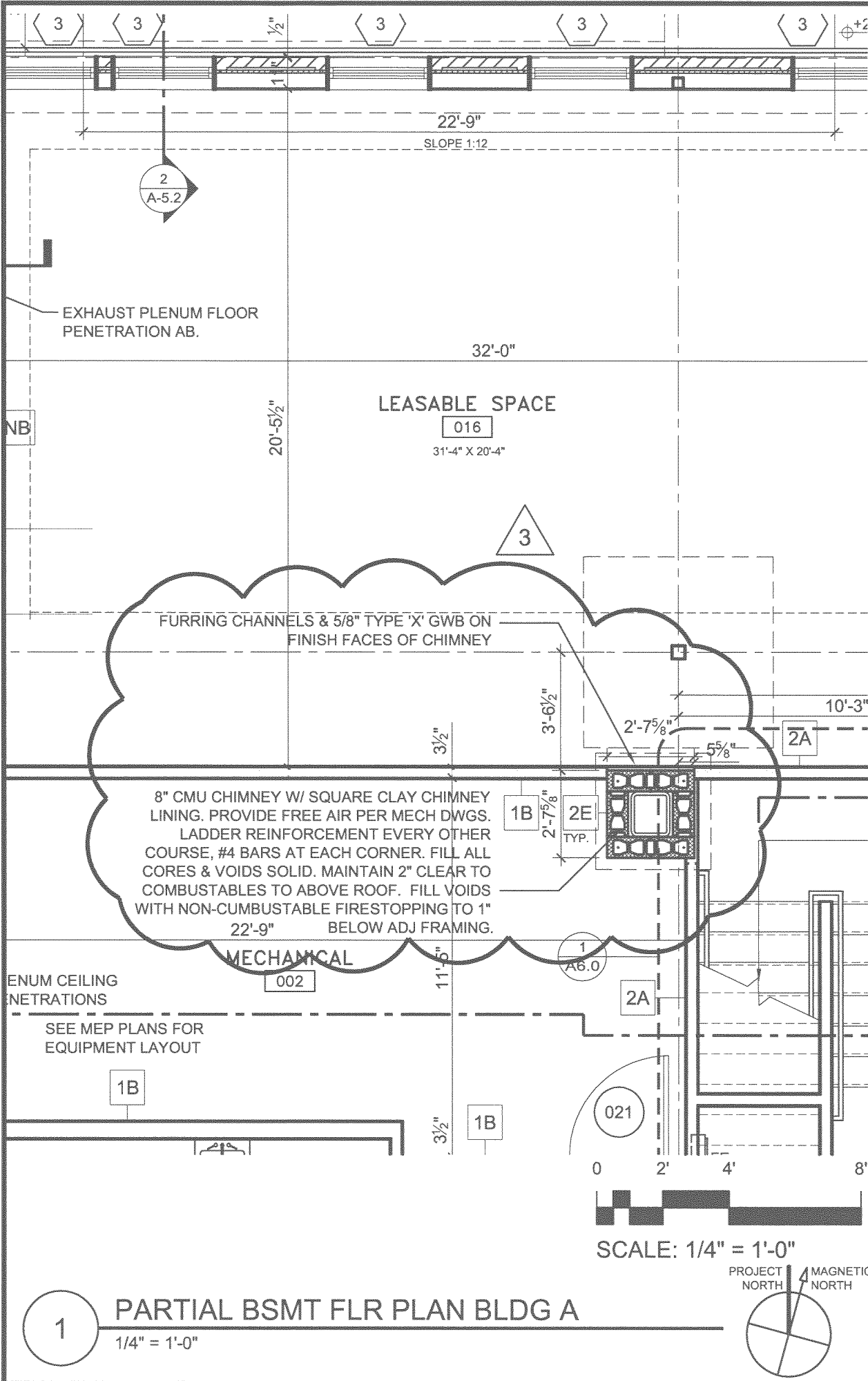
CHANGES TO THE GEO-TECH REPORT

None

CHANGES TO THE DRAWINGS

- 3-8 G-1 Partition REVERSE 2 hr partition type '2E' to 8" CMU.
Types
- 3-9 A1.0 A 1 REVERSE chimney with attached revised SKA-11.

T:\00_TFH Projects\PROP0114_Mellen GrantDrawings\Plan0114_A1.0_BM_Bldg A.DWG_SKA-11_2/25/2004 11:10:20 AM



© 2004 TFH ARCHITECTS

GRANT & MELLEN STREETS
Neighborhood Center and Affordable Housing
 PEOPLE'S REGIONAL OPPORTUNITY PROGRAM
 Portland, Maine

TFH ARCHITECTS
 100 COMMERCIAL STREET
 PORTLAND MAINE 04101
 TELEPHONE 207 775 6141
 ARCHITECTURE PLANNING

CONSULTANTS:

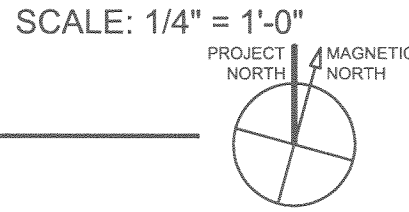
DATE:	02/25/04
PROJECT No.	0114
DRAWN BY:	DAM
CHECKED BY:	TST
SCALE:	AS NOTED

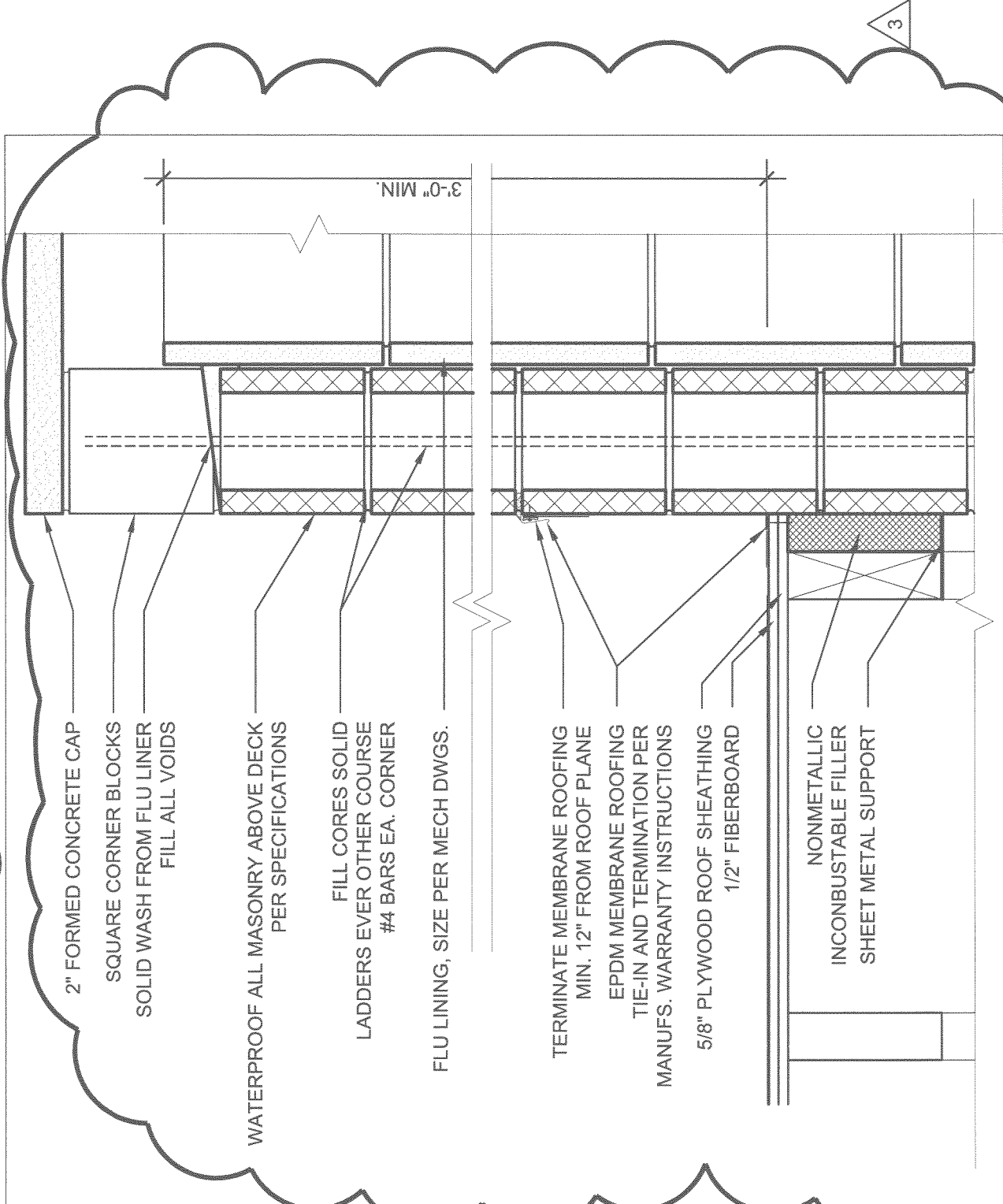
SHEET TITLE:
 PARTIAL BLDG. A
 A1.0

REVISED
SKA-11

1

PARTIAL BSMT FLR PLAN BLDG A
 1/4" = 1'-0"





2" FORMED CONCRETE CAP
 SQUARE CORNER BLOCKS
 SOLID WASH FROM FLU LINER
 FILL ALL VOIDS

WATERPROOF ALL MASONRY ABOVE DECK
 PER SPECIFICATIONS
 FILL CORES SOLID
 LADDERS EVERY OTHER COURSE
 #4 BARS EA. CORNER

FLU LINING, SIZE PER MECH DWGS.

TERMINATE MEMBRANE ROOFING
 MIN. 12" FROM ROOF PLANE
 EPDM MEMBRANE ROOFING
 TIE-IN AND TERMINATION PER
 MANUFS. WARRANTY INSTRUCTIONS

5/8" PLYWOOD ROOF SHEATHING
 1/2" FIBERBOARD

NONMETALLIC
 INCOMBUSTIBLE FILLER
 SHEET METAL SUPPORT

3'-0" MIN.

3

9 CHIMNEY CAP

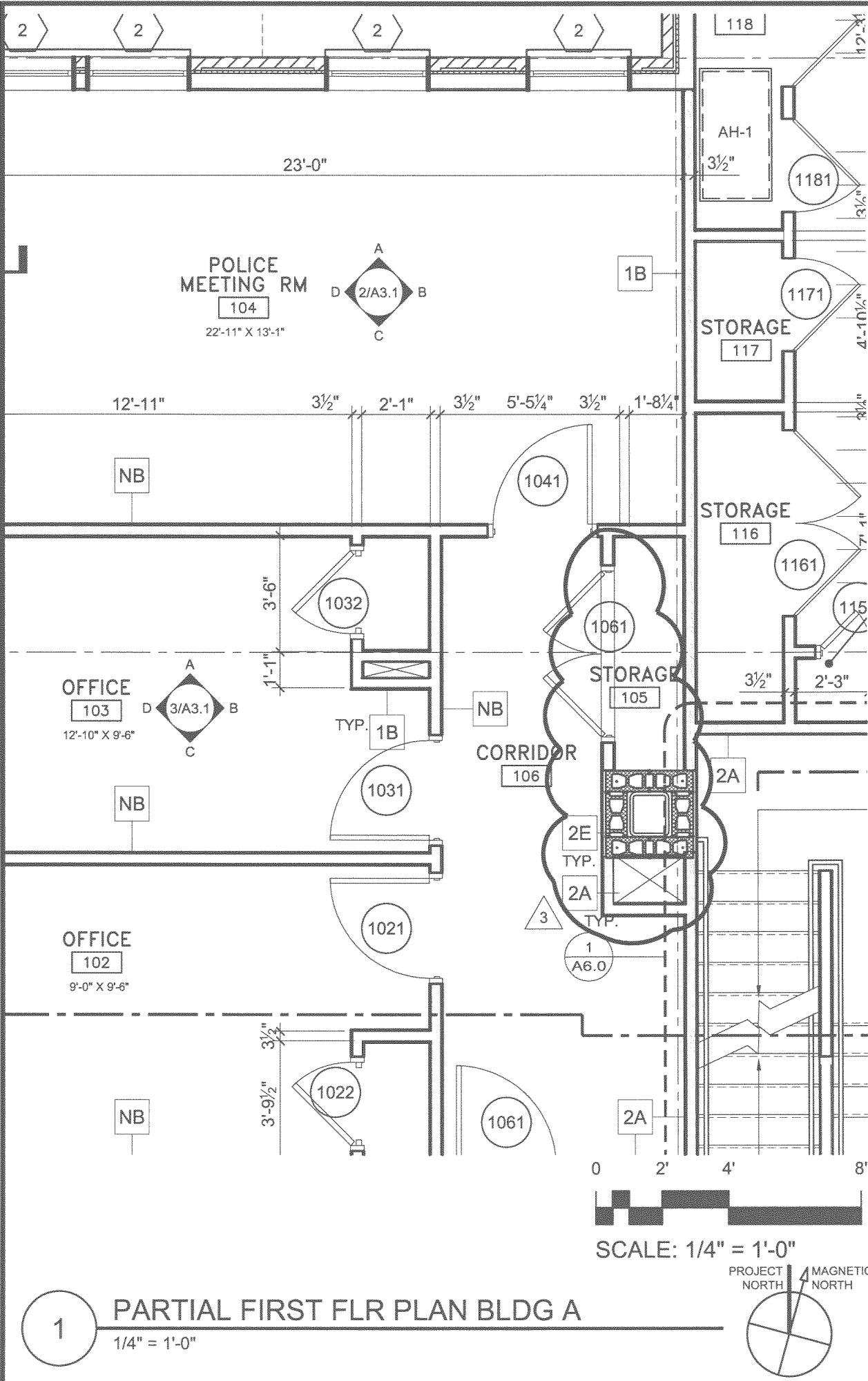
1 1/2" = 1'-0"

SKA-12

rev. 2/25/04

PARTIAL A5.2

T:\00_TFH Projects\PROJ0114_Mellen Grant\Drawings\Plan\0114_A1.1_1stFlr_BldgA.dwg, SKA-13, 2/25/2004 12:02:54 PM



© 2004 TFH ARCHITECTS

GRANT & MELLEN STREETS
Neighborhood Center and Affordable Housing
 PEOPLE'S REGIONAL OPPORTUNITY PROGRAM
 Portland, Maine

TFH ARCHITECTS
 100 COMMERCIAL STREET
 PORTLAND MAINE 04101
 TELEPHONE 207 775 6141
 ARCHITECTURE PLANNING

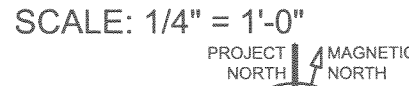
CONSULTANTS:

DATE:	02/25/04
PROJECT No.	0114
DRAWN BY:	DAM
CHECKED BY:	TST
SCALE:	AS NOTED

SHEET TITLE:
 PARTIAL
 BLDG. A
 A1.1

SKA-13


1 PARTIAL FIRST FLR PLAN BLDG A
 1/4" = 1'-0"



T:\00_TFH Projects\PROJ0114_Mellen Grant\Drawings\Plan0114_A1.0_BM_BldgB.dwg, SKA-14, 2/25/2004 12:09:24 PM

© 2004 TFH ARCHITECTS

GRANT & MELLEN STREETS
Neighborhood Center and Affordable Housing
PEOPLE'S REGIONAL OPPORTUNITY PROGRAM
Portland, Maine

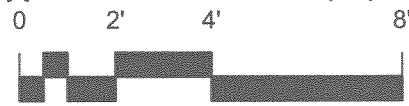
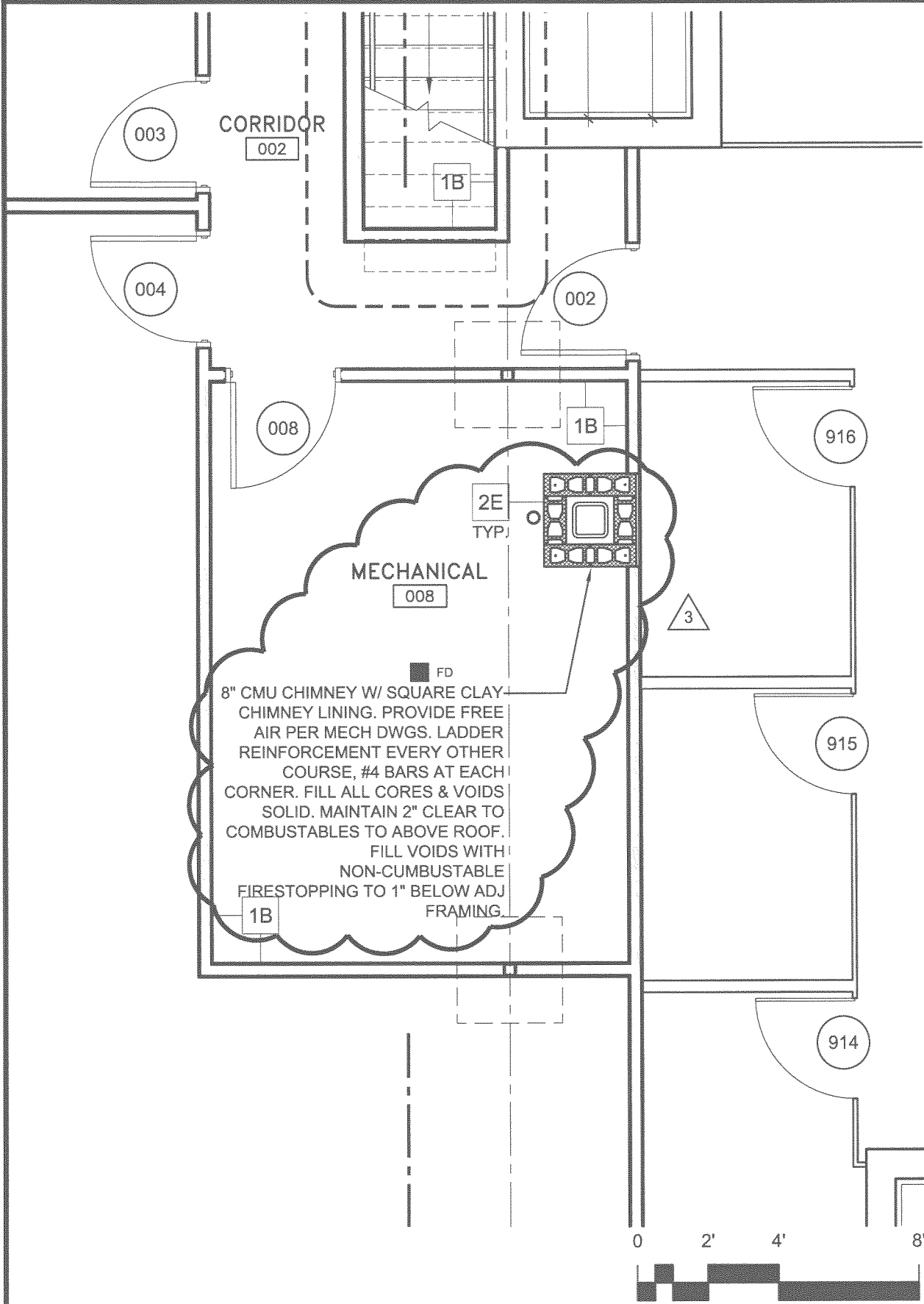

TFH ARCHITECTS
100 COMMERCIAL STREET
PORTLAND MAINE 04101
TELEPHONE 207 775 6141
ARCHITECTURE PLANNING

CONSULTANTS:

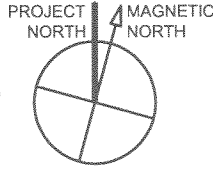
DATE: 02/25/04
PROJECT No. 0114
DRAWN BY: DAM
CHECKED BY: TST
SCALE: AS NOTED

SHEET TITLE:
PARTIAL
BLDG. B
A1.0

SKA-14



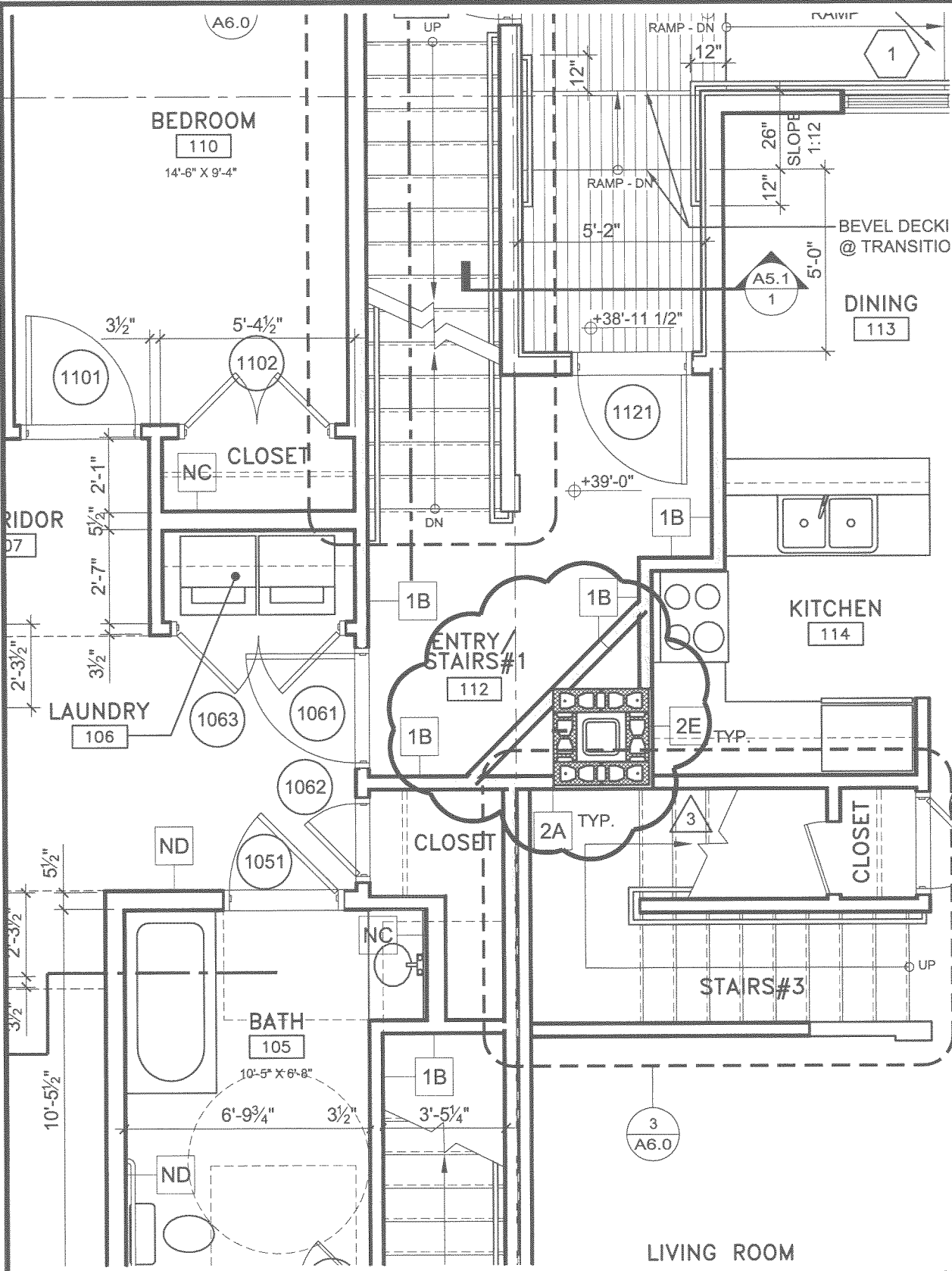
SCALE: 1/4" = 1'-0"



1

PARTIAL BSMT FLR PLAN BLDG B

1/4" = 1'-0"



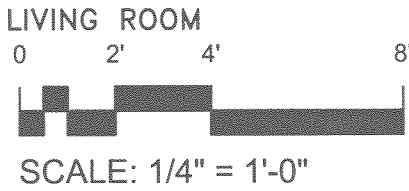
GRANT & MELLEN STREETS
 Neighborhood Center and Affordable Housing
 PEOPLE'S REGIONAL OPPORTUNITY PROGRAM
 Portland, Maine

TFH ARCHITECTS
 100 COMMERCIAL STREET
 PORTLAND MAINE 04101
 TELEPHONE 207 775 6141
 ARCHITECTURE PLANNING

CONSULTANTS:

DATE: 02/25/04
 PROJECT No. 0114
 DRAWN BY: DAM
 CHECKED BY: TST
 SCALE: AS NOTED

SHEET TITLE:
 PARTIAL
 BLDG. B
 A1.1



1 PARTIAL BSMT FLR PLAN BLDG B
 1/4" = 1'-0"

SKA-15

3-10	A1.1 A	1	REVISE chimney with attached revised SKA-13.
3-11	A1.0 B	1	REVISE chimney with attached revised SKA-14.
3-12	A1.1 B	1	REVISE chimney with attached revised SKA-15.
3-13	A5.2 A/B	1	REVISE chimney cap with attached revised SKA-15.

NEW DRAWINGS

<u>Item</u>	<u>Sheet</u>	<u>Detail</u>	<u>Description</u>
-------------	--------------	---------------	--------------------

None

Questions & Clarifications

None

ARCHITECT'S SUPPLEMENTARY INSTRUCTIONS

None

CERTIFICATION

By: _____ Date: _____

END of ADDENDUM #3