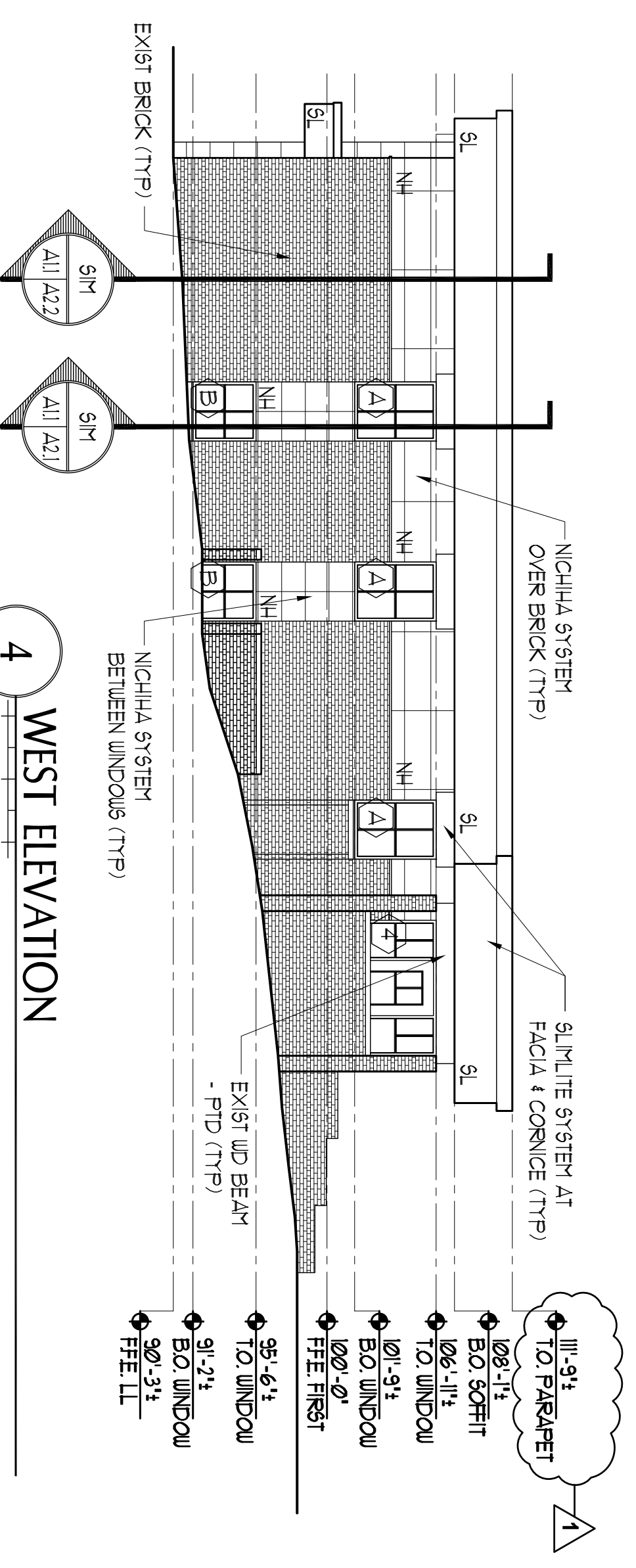


ENTRY NOTE:

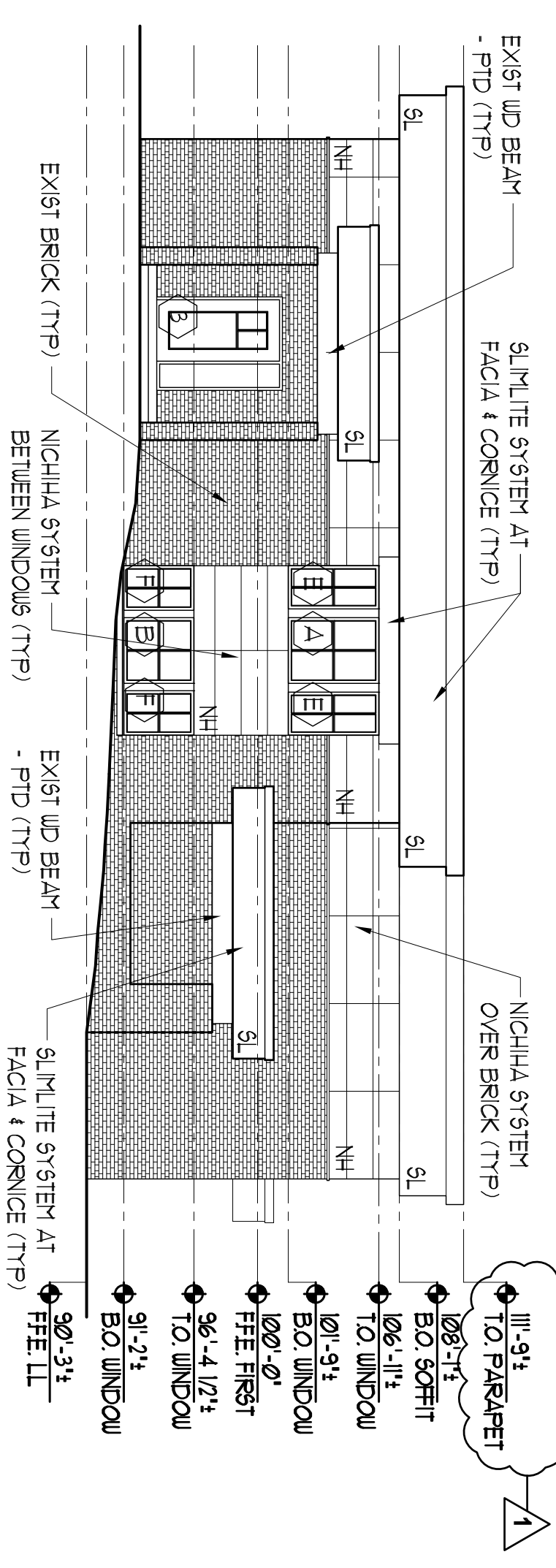
1. ALL ENTRIES SHALL BE THERMALLY BROKEN ALUMINUM WITH INSULATED GLASS - COLOR BRONZE
2. ALL EXISTING OPENING DIMENSIONS TO BE VERIFIED IN FIELD
3. ALUMINUM DOORS - PROVIDE CLASSROOM FUNCTION IN SATIN STAINLESS STEEL

WINDOW NOTE:

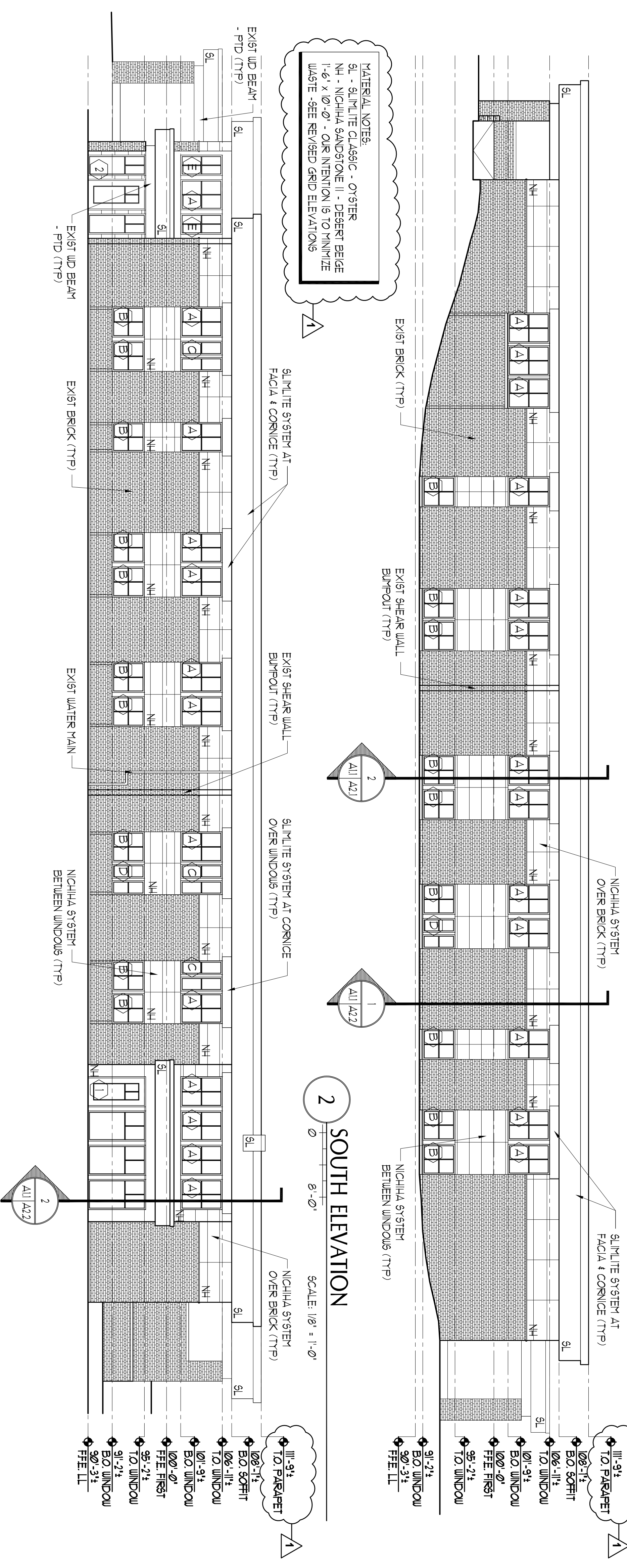
1. ALL WINDOWS ARE MARYN INTEGRITY ALL ULTREX - COLOR BRONZE
2. ALL EXISTING OPENING DIMENSIONS TO BE VERIFIED IN FIELD
3. CLEAR GLASS WITH STANDARD BETWEEN GLASS PUTTONS



4 WEST ELEVATION
SCALE: 1/8" = 1'-0"



3 EAST ELEVATION
SCALE: 1/8" = 1'-0"



2 SOUTH ELEVATION
SCALE: 1/8" = 1'-0"

1 NORTH ELEVATION
SCALE: 1/8" = 1'-0"

MATERIAL NOTES:

- SL - SLIMLINE GLASSIC - OYSTER
- NH - NICHIA SANDSTONE II - DESERT BEIGE
- 1'-6" x 0'-0" - OUR INTENTION IS TO MINIMIZE WASTE - SEE REVISED GRID ELEVATIONS

- 111-914 TO PARAPET
- 100-114 B.O. SCOFFIT
- 106-114 TO WINDOW
- 101-914 B.O. WINDOW
- 100-01 FEE FIRST
- 99-214 TO WINDOW
- 90-314 B.O. WINDOW
- FREE LL

BID SET
NOT FOR CONSTRUCTION.

180 PARK AVE.
MEDICAL CENTER

#	DATE	DESCRIPTION
1	4/22/2016	Addendum 1

Date Issued: April 22, 2016
Project Number: 1210
Drawing Scale: AS NOTED

ELEVATIONS

Drawn By: TS
Checked By: ACH
A1.1

