

## ELECTRICAL SPECIFICATIONS

QUANTITY	SPEC. NUMBER	DESCRIPTION	UTILITIES		
			ELECTRICAL NEEDS (ALSO SEE DETAILS)	DEDICATED CIRCUIT	MECHANICAL DETAIL
		PLEASE NOTE: CONTRACTOR IS RESPONSIBLE FOR PROVIDING ALL REQUIRED UTILITIES. ALL REQUIREMENTS TO BE VERIFIED BY MANUFACTURER'S SPEC SHEETS PROVIDED BY HENRY SCHEIN DENTAL EQUIPMENT SPECIALIST. MANUFACTURER'S SPECS SUPERSEDE ANY AND ALL INFORMATION CONTAINED HEREIN.			
11	2A	UTILITY CENTER - SELF-CONTAINED WATER.	115V, 20A		2A
11	3A	REAR CABINET UTILITY CENTER - SELF-CONTAINED WATER. BACK FLOW PREVENTION REQUIRED AS PER LOCAL CODE.	115V, 20A		3A
1	3A.1	CUSTOM REAR UTILITY CENTER - SELF-CONTAINED WATER. BACK FLOW PREVENTION REQUIRED AS PER LOCAL CODE.	115V, 20A		3A.1
1	3A.2	CHAIR UTILITY CENTER - SELF-CONTAINED WATER. BACK FLOW PREVENTION REQUIRED AS PER LOCAL CODE.	115V, 20A		3A.2
17	4A	2" CONDUIT - PIPE CHASE WITH PULL-STRING SUPPLIED AND INSTALLED BY CONTRACTOR			
1	6	DENTAL TRACK LIGHT - SUPPLIED AND INSTALLED BY HENRY SCHEIN DENTAL.	115V, 15A		6
1	6A	DENTAL CEILING LIGHT - SUPPLIED AND INSTALLED BY HENRY SCHEIN DENTAL.	115V, 15A		6A
10	6D	DENTAL LIGHT (CENTER CABINET MOUNTED) - TIED IN AT POWER FOR CENTER CABINET (11C). SUPPLIED AND INSTALLED BY HENRY SCHEIN DENTAL.	115V, 20A		
7	9	ISLAND CABINET MOUNTED INTRAORAL X-RAY HEAD, ARM, AND WALL BRACKET - CONTRACTOR TO PROVIDE POWER AT LOCATION SHOWN ON ISLAND CABINET DETAIL. X-RAY UNIT SUPPLIED AND INSTALLED BY HENRY SCHEIN DENTAL. REQUIRES A 3 WIRE GROUNDED CIRCUIT.	115V, 20A		11C
2	9	WALL MOUNTED INTRAORAL X-RAY HEAD, ARM, AND WALL BRACKET - SUPPLIED AND INSTALLED BY HENRY SCHEIN DENTAL. REQUIRES A 3 WIRE GROUNDED CIRCUIT.	115V, 20A		9
9	9A	X-RAY MASTER CONTROL - CONTRACTOR TO SUPPLY AND INSTALL PIPE CHASE WITH PULL-STRING TO (9) LOCATION WHEN (9A) IS REMOTE. VERIFY SUPPLIER OF WIRING WITH HENRY SCHEIN EQUIPMENT SPECIALIST. FINAL CONNECTION BY HENRY SCHEIN DENTAL.			
16	9B	X-RAY REMOTE EXPOSURE BUTTON - CONTRACTOR TO SUPPLY AND INSTALL PIPE CHASE WITH PULL-STRING TO (9A) OR (9C) LOCATION. VERIFY SUPPLIER OF EXPOSURE BUTTON AND WIRING WITH HENRY SCHEIN EQUIPMENT SPECIALIST. FINAL CONNECTION BY HENRY SCHEIN DENTAL.			9B
1	9C	PANORAMIC XRAY UNIT - SUPPLIED AND INSTALLED BY HENRY SCHEIN DENTAL. REQUIRES A 3 WIRE GROUNDED CIRCUIT.	115V & 230V, 20A		9C
6	11C	CENTER ISLAND CABINET - SUPPLIED AND INSTALLED BY HENRY SCHEIN DENTAL. SINK AND FAUCET TO BE CONNECTED BY CONTRACTOR. FINAL CONNECTIONS BY CONTRACTOR.	115V, 20A		11C
1	14	STERILIZER (SINGLE CASSETTE) - SUPPLIED AND INSTALLED BY HENRY SCHEIN DENTAL. VERIFY IF SWITCHED OUTLET IS REQ'D.	115V, 20A		14
2	14A	STERILIZER [AUTO-CLAVE] - SUPPLIED AND INSTALLED BY HENRY SCHEIN DENTAL. VERIFY IF SWITCHED OUTLET IS REQ'D.	115V, 20A		14A

## ELECTRICAL SPECIFICATIONS

QUANTITY	SPEC. NUMBER	DESCRIPTION	UTILITIES		
			ELECTRICAL NEEDS (ALSO SEE DETAILS)	DEDICATED CIRCUIT	MECHANICAL DETAIL
1	15A	INSTRUMENT WASHER (HYDRIM) - SUPPLIED AND INSTALLED BY HENRY SCHEIN DENTAL.	208-240V, 15A		15A
1	15B	HANDPIECE MAINTENANCE SYSTEM - CONTRACTOR TO PROVIDE REQ'D UTILITIES. 1/2" AIR LINE WITH VALVE STOP (58-145 PSI) ABOVE COUNTERTOP. SYSTEM SUPPLIED AND INSTALLED BY HENRY SCHEIN DENTAL.	115V, 15A		15B
1	16	MODEL TRIMMER - SUPPLIED AND INSTALLED BY HENRY SCHEIN DENTAL. BACK FLOW PREVENTION AS REQUIRED PER CODE.	115V, 15A		16
1	23	EXHAUST FAN - SUPPLIED AND INSTALLED BY CONTRACTOR. MAY REQUIRE A SWITCH DEPENDING ON APPLICATION. VENT TO OUTSIDE.	115V, 15A		
1	23A	EXHAUST FAN FOR DENTAL MECHANICAL CLOSET - SUPPLIED AND INSTALLED BY CONTRACTOR. A THERMOSTAT CONTROLLED LOW SONE FAN IS REQUIRED TO KEEP ROOM TEMPERATURE WITHIN THE EQUIPMENT MANUFACTURER'S RECOMMENDED OPERATING TEMPERATURE RANGE. VENT TO OUTSIDE.	115V, 20A		
1	25	DENTAL AIR COMPRESSOR - SUPPLIED BY HENRY SCHEIN DENTAL, INSTALLED BY CONTRACTOR. FOR GAS-DRIVEN DEVICES IN A LEVEL 3 FACILITY. 1/2" I.D. COPPER TYPE K OR L SUPPLY LINES TO LOCATIONS THAT REQUIRE AIR. BUCK BOOST TRANSFORMER SUPPLIED AND INSTALLED BY CONTRACTOR (IF REQ'D). FINAL CONNECTIONS BY CONTRACTOR. REFER TO NFPA 99, 2005, 5.3.3.5 FOR REGULATIONS & REQUIREMENTS.	230V, 40A		25
1	27B	VACUUM PUMP (DRY) - SUPPLIED BY HENRY SCHEIN DENTAL, INSTALLED BY CONTRACTOR. 1.5" OR 2" MAIN TRUNK LINES. USE SCH 40 PVC WHERE PERMITTED BY CODE. VERIFY TRUNK & BRANCH LINE SIZES WITH MFR RECOMMENDATIONS. EXHAUST PUMP TO OUTSIDE. BACK FLOW PREVENTION REQ'D PER LOCAL CODE. BUCK BOOST TRANSFORMER SUPPLIED AND INSTALLED BY CONTRACTOR (IF REQ'D). FINAL CONNECTIONS BY CONTRACTOR. PROVIDE WATER LINE WITH HOSE BIB NEAR UNIT.	(2) 230V, 30A		27B
1	32B	REMOTE PANEL (AIR & VAC) - SUPPLIED BY HENRY SCHEIN DENTAL, INSTALLED BY CONTRACTOR 60" A.F.F. CONTRACTOR TO SUPPLY AND INSTALL 24V CONTROL WIRING PER MFR SPECS.			32B
11	39A	WALL MOUNTED MONITOR - EXACT LOCATION PER OWNER AND HENRY SCHEIN EQUIPMENT SPECIALIST.	SEE MFG. SPECS		39A
4	42A	TASK LIGHTING - SUPPLIED AND INSTALLED BY CONTRACTOR.	115V, 15A		

## ELECTRICAL NOTES

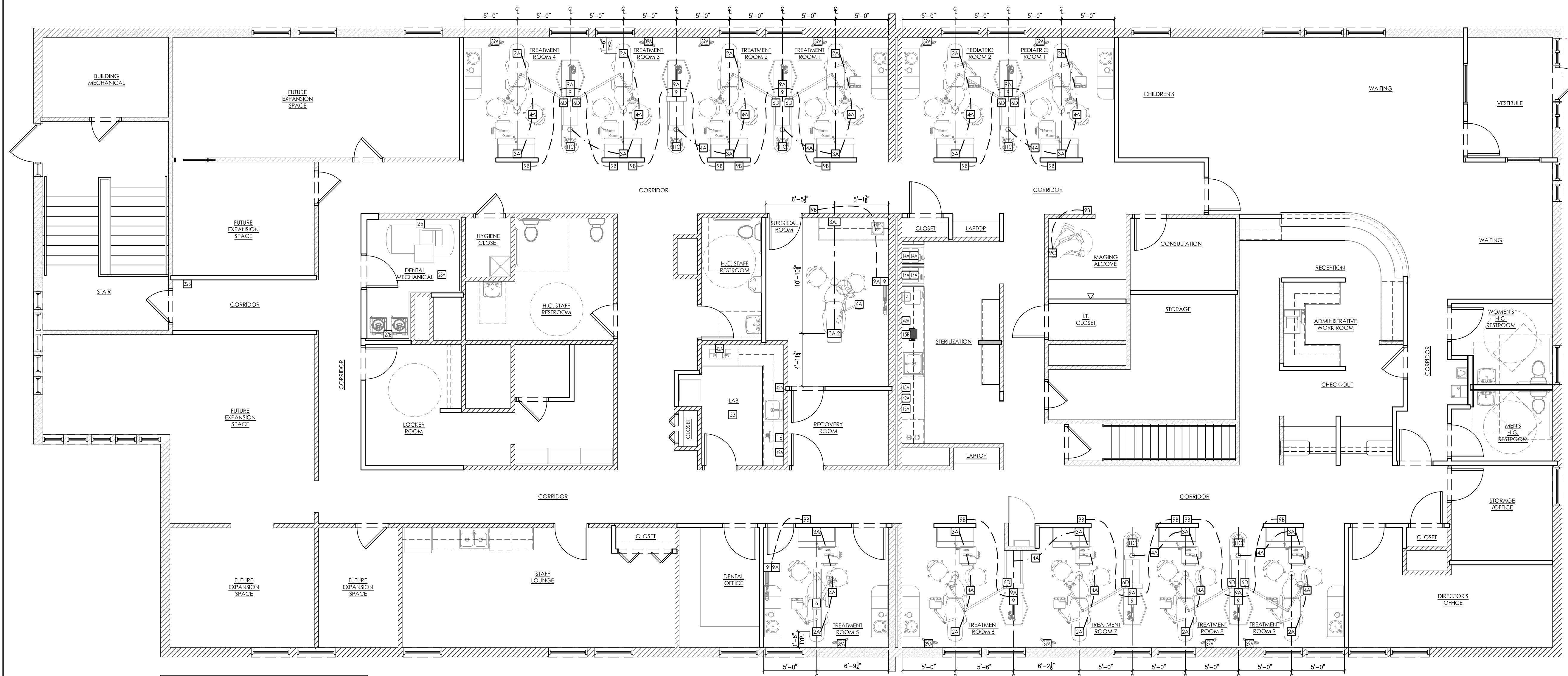
- THIS SPECIFICATION SHEET IS INTENDED AS A GUIDE FOR TRADESMEN. THE FLOOR PLANS ENCLOSED HEREIN ARE SUGGESTIONS FOR THE PLACEMENT OF DENTAL EQUIPMENT. THEY ARE NOT INTENDED FOR CONSTRUCTION.
- EXACT EQUIPMENT LOCATIONS MUST BE JOB SITE VERIFIED BY THE HENRY SCHEIN DENTAL EQUIPMENT SPECIALIST.
- FOLLOW MANUFACTURER'S DRAWINGS FOR EXACT REQUIREMENTS FOR ANY EQUIPMENT SUPPLIED BY HENRY SCHEIN DENTAL. CONSULT WITH HENRY SCHEIN DENTAL REF FOR ADDITIONAL INFORMATION.
- GFCI PROTECTION OR REDUNDANT GROUND IN DENTAL CHAIR RECEPTACLES. DENTAL UTILITY CABINETS AND ANY OTHER AREAS REQUIRED BY LOCAL CODE IS THE RESPONSIBILITY OF THE ELECTRICAL CONTRACTOR.
- ADDITIONAL CONVENIENCE OUTLETS REQUIRED ON JOBSITE ARE THE RESPONSIBILITY OF ELECTRICAL CONTRACTORS. FOLLOW LOCAL CODE RESTRICTIONS.
- ALL COMPUTER NETWORKING AND WORKSTATIONS MUST BE SPECIFIED BY CUSTOMER'S COMPUTER SUPPLIER. IF HENRY SCHEIN WILL BE SUPPLYING THE COMPUTER NETWORKING SYSTEM, SEE SHEET SE.2 FOR THE OFFICE AUTOMATION PLAN.

## ELECTRICAL LEGEND

ALL HEIGHTS TO BE SPECIFIED ON-SITE UNLESS NOTED OTHERWISE

▽ DATA DROP/OUTLET

SEE SHEETS SPE.1 & SPE.2 FOR ILLUSTRATIONS & DETAILS



THIS PLAN IS FOR THE SOLE PURPOSE OF SPECIFICATION AND INSTALLATION OF THE DENTAL EQUIPMENT SUPPLIED BY HENRY SCHEIN DENTAL. EXISTING CONDITIONS MAY NOT MEET LOCAL BUILDING AND ACCESSIBILITY CODES. IT IS THE ARCHITECT/ CONTRACTOR'S RESPONSIBILITY TO VERIFY THAT ALL CODE RESTRICTIONS AND CLEARANCES ARE MET.

## PROPOSED DENTAL ELECTRICAL SPECIFICATIONS

3/16"=1'-0"

HENRY SCHEIN  
DENTAL

10920 WEST LINCOLN AVENUE  
WEST ALLIS, WI 53227

PROJECT:  
COMMUNITY DENTAL  
PORTLAND

LOCATION:  
640 BRIGHTON AVENUE  
PORTLAND, ME 04101

HENRY SCHEIN REP:  
JESSE LEVIELLE  
CENTER:  
BOSTON, MA  
PHONE #:  
(207) 233-4978

**IMPORTANT NOTE:**  
THIS DOCUMENT HAS BEEN PREPARED AS AN INSTRUMENT OF THE PROFESSIONAL SERVICE, AND IS NOT AN ARCHITECTURAL PLAN. IDEAS/ DESIGNS INCLUDED HEREIN ARE THE SOLE PROPERTY OF HENRY SCHEIN DENTAL, AND ARE PROTECTED UNDER COPYRIGHT. THEY MAY NOT BE USED OR REPRODUCED WITHOUT EXPRESSED WRITTEN CONSENT OF HENRY SCHEIN AND FULL PAYMENT OF ANY ASSOCIATED DESIGN FEES.  
**ALL DIMENSIONS ARE SUBJECT TO JOB-SITE VERIFICATION.**

DRAWING NAME:  
COMMUNITY DENTAL PORTLAND-1A-F  
PROJECT START DATE:  
07/20/2015  
FINALS START DATE:  
01/22/2016  
DRAWN BY: ARCH  
FINALS BY: AKL  
CHECKED BY: GMC

REVISIONS:  
02/10/16 AKL  
02/16/16 AKL  
04/07/16 AKL  
---  
---  
---  
INT.SQ.FT. = PER ARCH

SCALE: SHT. SIZE:  
3/16"=1'-0" D  
ELECTRICAL  
PLAN

SE.1