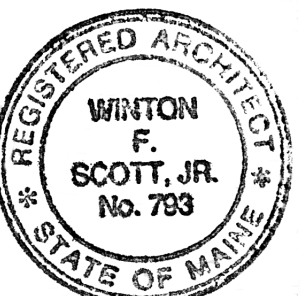




Winton Scott Architects
5 Milk Street
Portland, Maine 04101
207 774 4811
www.wintonsscott.com

Architecture / Planning
Preservation Architecture
Interior Architecture



Winton Scott

Portland
Community
Health Center

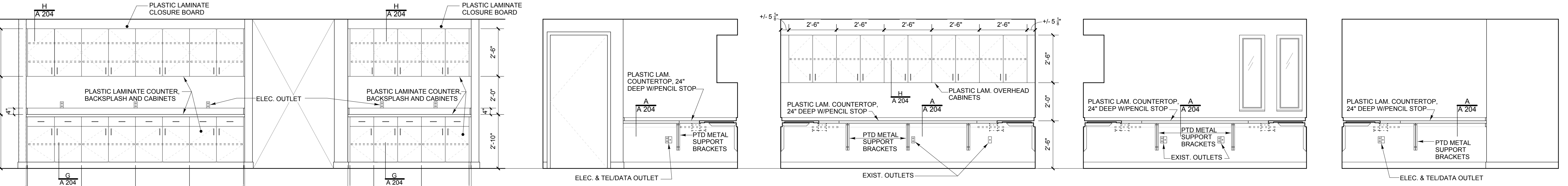
180 Park Avenue
Portland, Maine

CONSTRUCTION DOCUMENTS
August 31, 2012

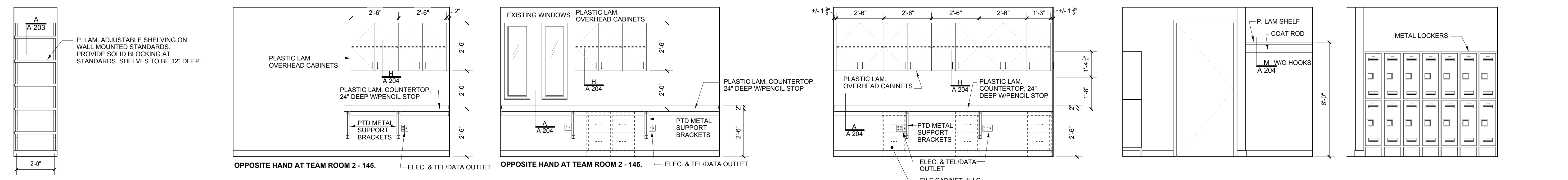
Millwork Elevations

3/8" = 1'-0"

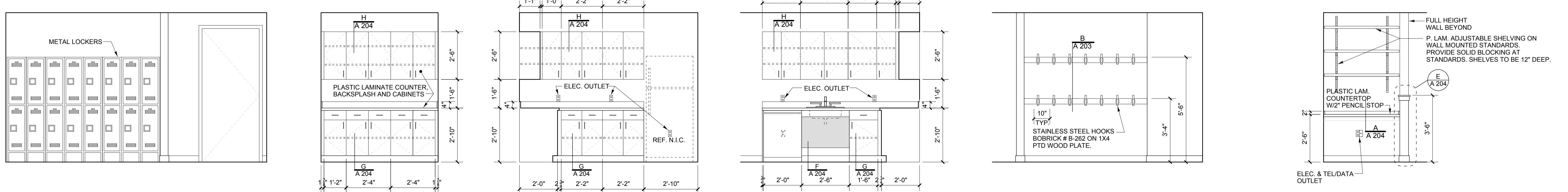
A 203



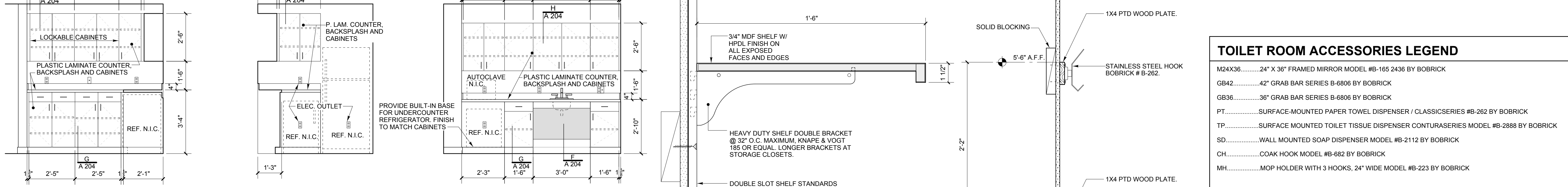
1 MED. ASSIST. 109 SCALE: 3/8" = 1'-0"
2 OFFICE 110 SCALE: 3/8" = 1'-0"
3 OFFICE 110 SCALE: 3/8" = 1'-0"
4 OFFICE 110 SCALE: 3/8" = 1'-0"
5 OFFICE 110 SCALE: 3/8" = 1'-0"



6 STORAGE 114A SCALE: 3/8" = 1'-0"
7 TEAM ROOM 1 - 115 SCALE: 3/8" = 1'-0"
8 TEAM ROOM 1 - 115 SCALE: 3/8" = 1'-0"
9 TEAM ROOM 1 - 115 / TEAM ROOM 2 - 145 SCALE: 3/8" = 1'-0"
10 LOCKERS 124 SCALE: 3/8" = 1'-0"
11 LOCKERS 124 SCALE: 3/8" = 1'-0"



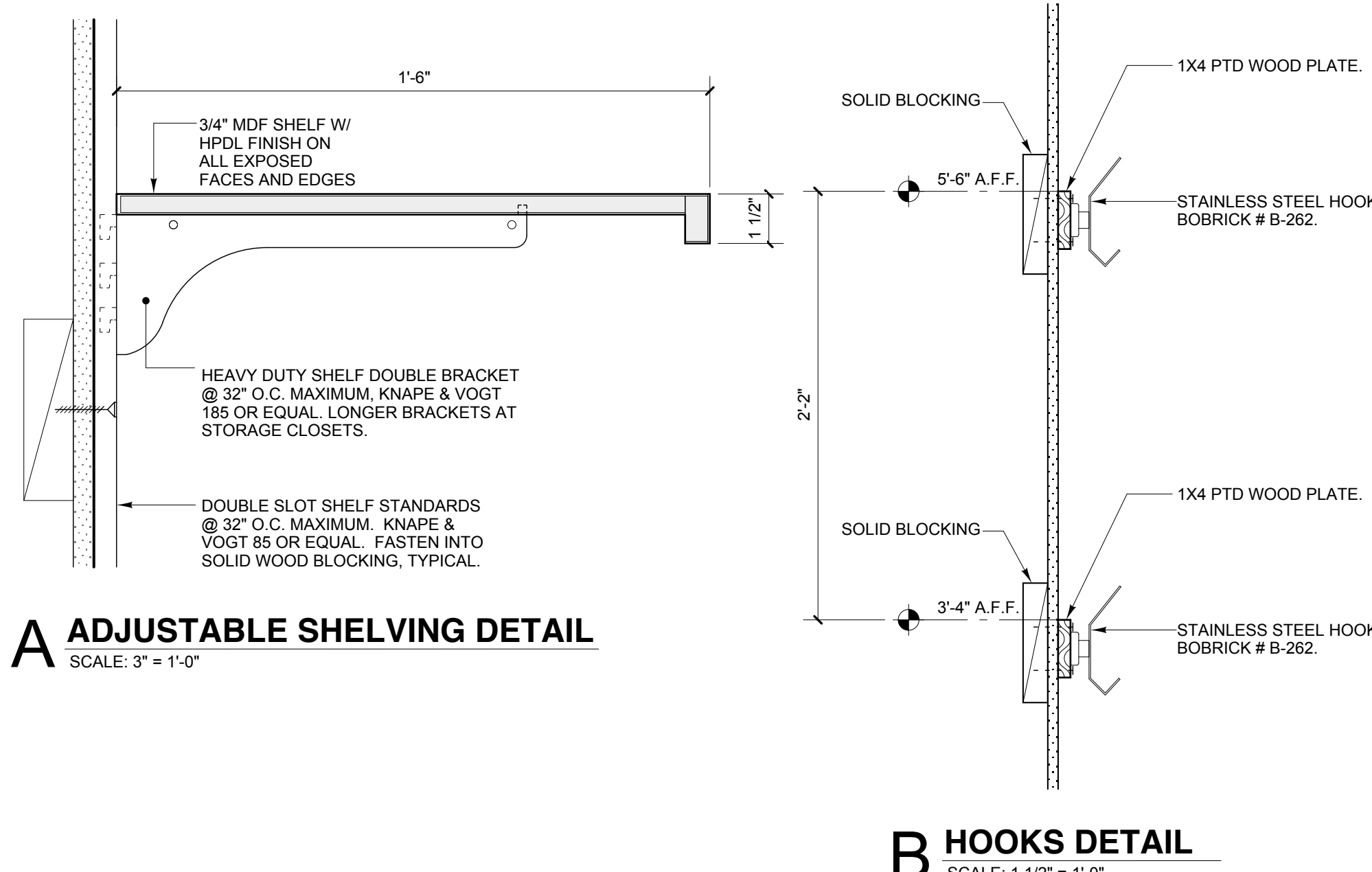
12 LOCKERS 125 SCALE: 3/8" = 1'-0"
13 CLEAN STORAGE 135 SCALE: 3/8" = 1'-0"
14 STAFF LOUNGE 129 SCALE: 3/8" = 1'-0"
15 STAFF LOUNGE 129 SCALE: 3/8" = 1'-0"
16 COAT HOOKS - CORRIDOR 130 SCALE: 3/8" = 1'-0"
17 EXEC ASSIST. 140 SCALE: 3/8" = 1'-0"



18 MED SUPPLIES 139 SCALE: 3/8" = 1'-0"
19 MED SUPPLIES 139 SCALE: 3/8" = 1'-0"
20 LAB 138 SCALE: 3/8" = 1'-0"



21 EXAM 12 - 132 SCALE: 3/8" = 1'-0"
22 EXAM 7 - 131 SCALE: 3/8" = 1'-0"



A ADJUSTABLE SHELVING DETAIL
SCALE: 3" = 1'-0"

B HOOKS DETAIL
SCALE: 1/2" = 1'-0"

TOILET ROOM ACCESSORIES LEGEND	
M24X36	24" X 36" FRAMED MIRROR MODEL #B-165 2436 BY BOBRICK
GB42	42" GRAB BAR SERIES B-6806 BY BOBRICK
GB36	36" GRAB BAR SERIES B-6806 BY BOBRICK
PT	SURFACE-MOUNTED PAPER TOWEL DISPENSER / CLASSIC SERIES #B-262 BY BOBRICK
TP	SURFACE MOUNTED TOILET TISSUE DISPENSER CONTURASERIES MODEL #B-2888 BY BOBRICK
SD	WALL MOUNTED SOAP DISPENSER MODEL #B-2112 BY BOBRICK
CH	COAK HOOK MODEL #B-682 BY BOBRICK
MH	MOP HOLDER WITH 3 HOOKS, 24" WIDE MODEL #B-223 BY BOBRICK

TOILET ROOMS GENERAL NOTES	
1	PROVIDE SOLID BLOCKING BEHIND ALL WALL MOUNTED ACCESSORIES.
2	DIMENSIONS INDICATED AS "CLEAR" ARE TO FACE OF FINISHED WALL, FACE OF TOILET PARTITION, AND EDGE OR CENTER OF FIXTURE/ACCESSORY. DIMENSIONS INDICATED AS "R.D." ARE STUD TO STUD OR STUD TO EXISTING WALL SURFACE. CONTACT ARCHITECT IF DISCREPANCIES ARE FOUND.
3	INSULATE ALL EXPOSED PIPES AT SINKS PER ADA REQUIREMENTS, TYPICAL.
4	IN INSTANCES WHERE ELECTRICAL OUTLETS ON INTERIOR ELEVATIONS AND ELECTRICAL POWER PLANS (E DRAWINGS) ARE NOT IN AGREEMENT IN TERMS OF NUMBER OF OUTLETS, THE DRAWING SHOWING THE MOST OUTLETS PREVAILS.
5	IN INSTANCES WHERE ELECTRICAL OUTLETS ON INTERIOR ELEVATIONS AND ELECTRICAL POWER PLANS (E DRAWINGS) ARE NOT IN AGREEMENT IN TERMS OF OUTLET LOCATIONS, CONSULT ARCHITECT.
6	PROVIDE 1 COAT HOOK IN EACH TOILET ROOM MOUNTED ON DOOR AT MANUFACTURER'S RECOMMENDED HEIGHT FOR ADA COMPLIANCE.
7	PROVIDE 1 MOP HOLDER WITH 3 HOOKS AT EACH CUSTORIAL CLOSET. INSTALL OVER THE MOP SINK.