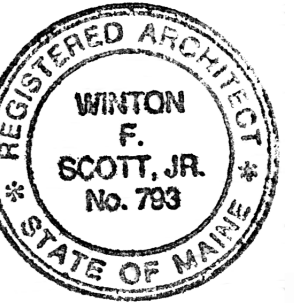




Winton Scott Architects
 5 Milk Street
 Portland, Maine 04101
 207 774 4811
 www.wintonscott.com

Architecture / Planning
 Preservation Architecture
 Interior Architecture



Winton Scott

Portland
 Community
 Health Center

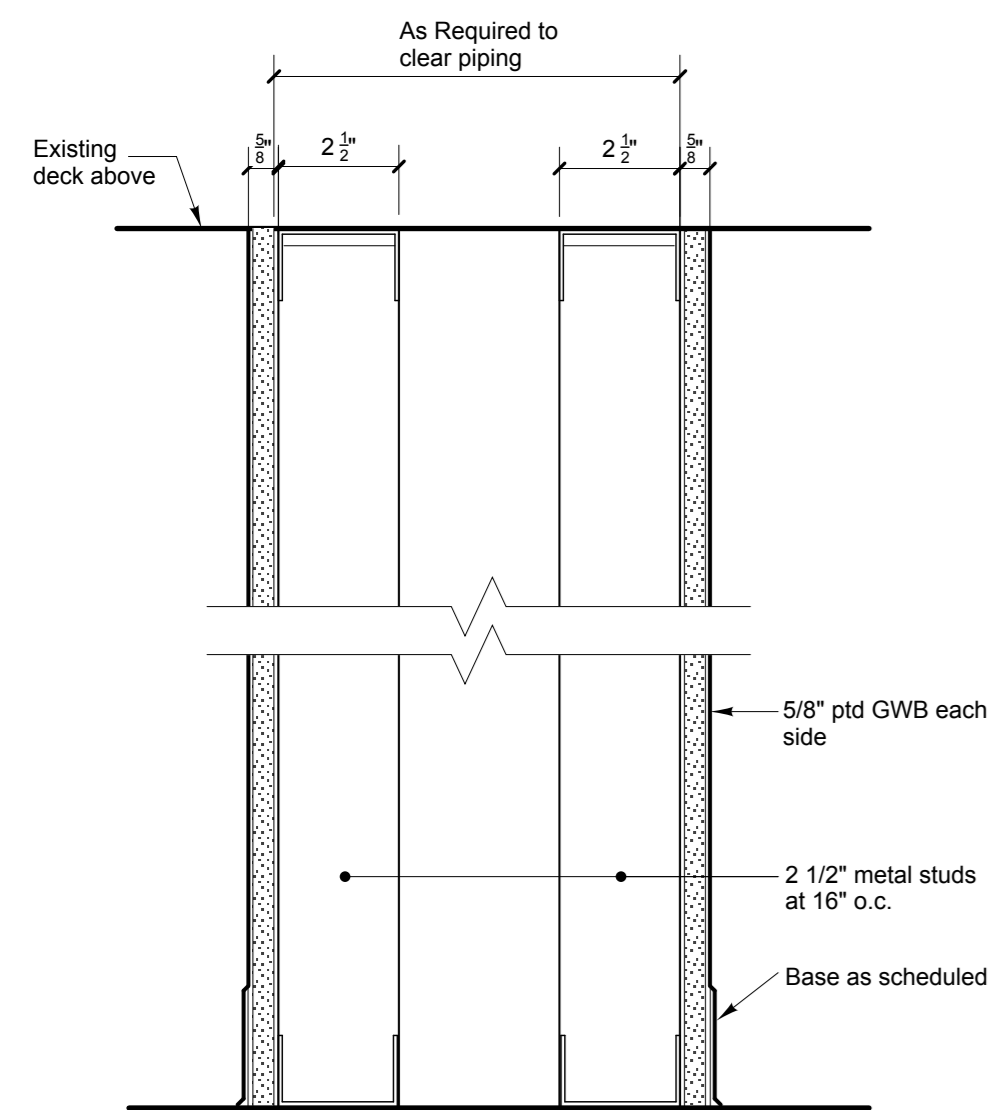
180 Park Avenue
 Portland, Maine

CONSTRUCTION DOCUMENTS
 August 31, 2012

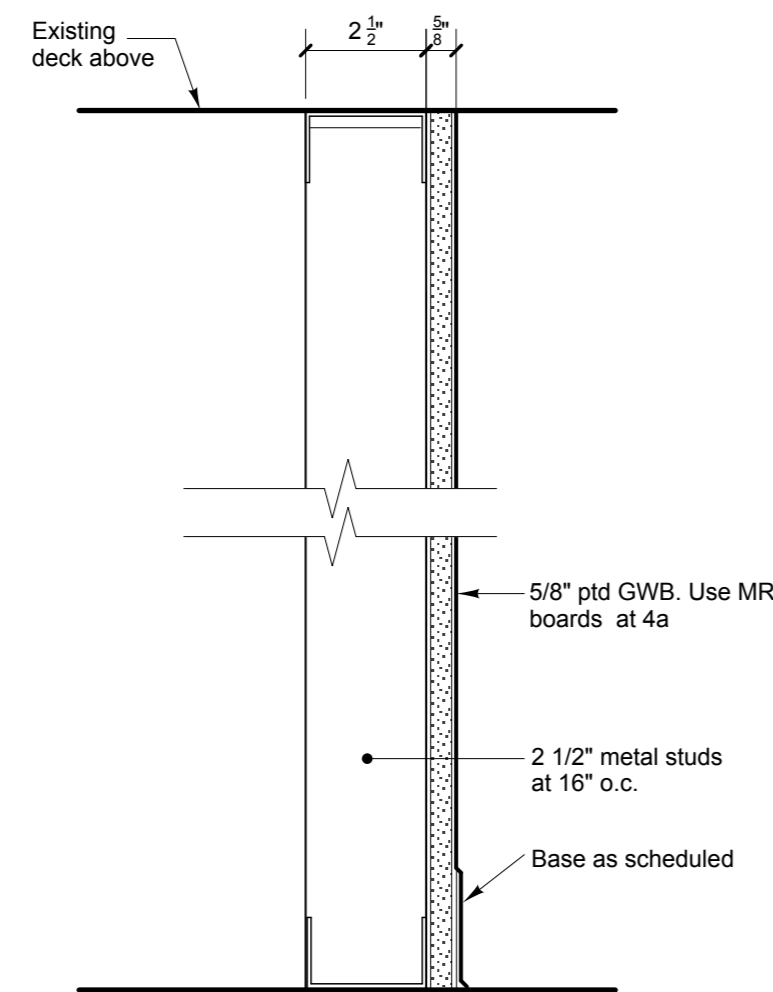
Partition Types

Scale: As Noted

A 201

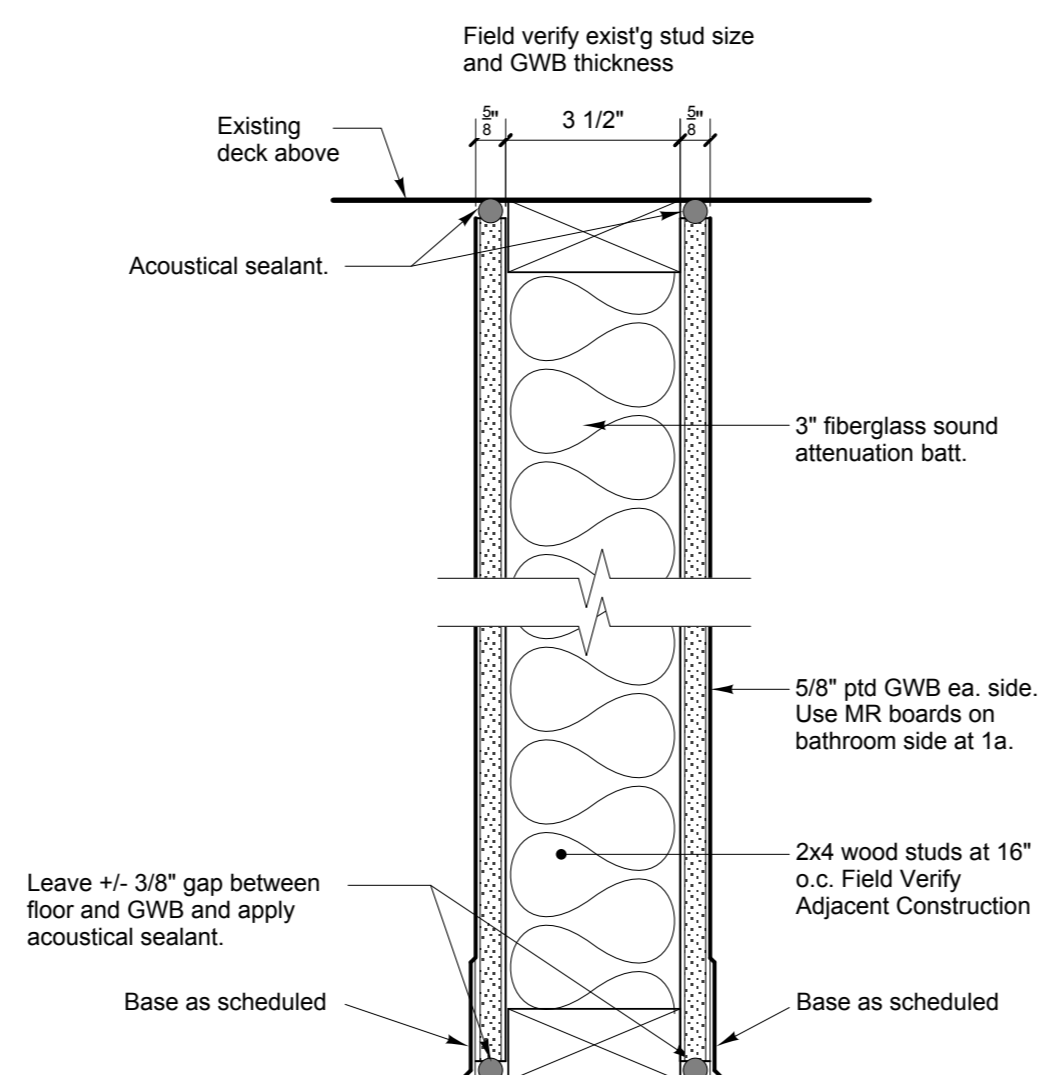


5 Typical Pipe Chase Partition
 As Shown



4 Typical Interior Partition
 As Shown

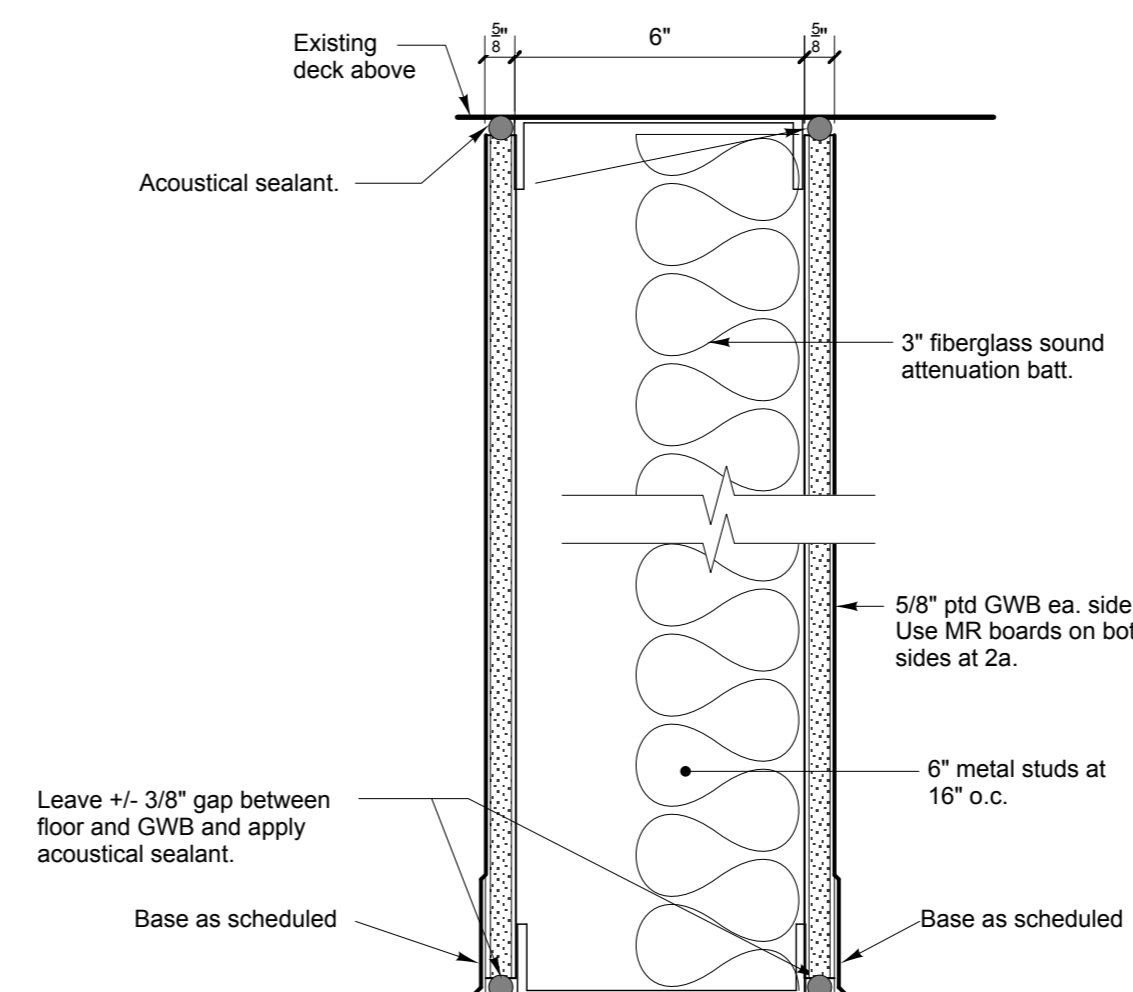
4a SAME AS 4 EXCEPT USE MR BOARD IN LIEU OF GWB



3 Typical Infill partition to Match Existing Construction
 As Shown - Verify in Field.

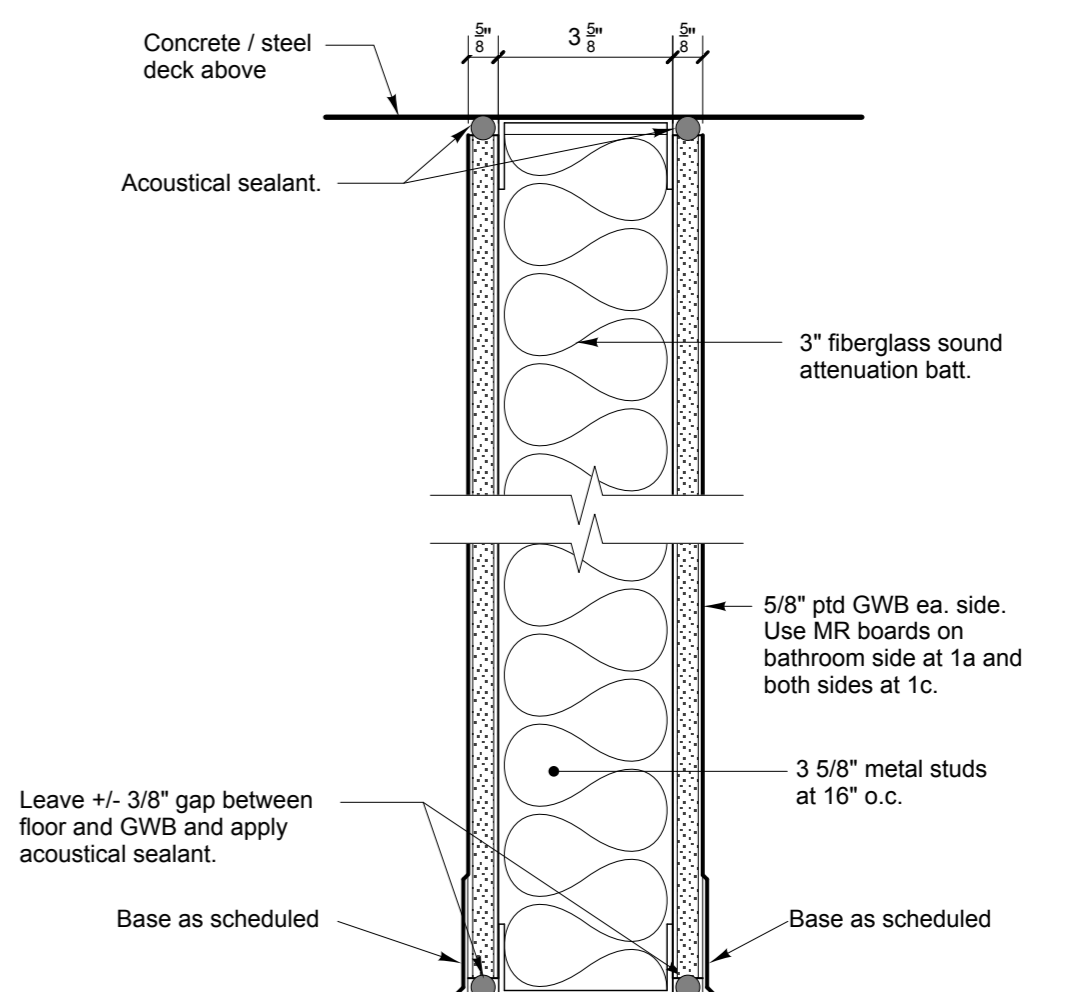
3a Typical Infill partition to Match Existing Construction
 1 HOUR RATED

3b Typical Infill Partition at Bathroom
 Use 5/8 inch MR Board on Bathroom side in lieu of GWB.



2 Typical Interior Sound Partition
 As Shown.

2a Typical Interior Sound Partition at Bathroom
 Use 5/8 inch MR Board on Both sides in lieu of GWB.



1 Typical Interior Partition
 As Shown.

1a Typical Interior Partition at Bathroom
 Use 5/8 inch MR Board on Bathroom side in lieu of GWB.

1b SAME AS TYPE 1 BUT NO SOUND BATTS

1c Typical Interior Partition at Bathroom
 Use 5/8 inch MR Board on Both sides in lieu of GWB.

1d SAME AS 1B BUT 1 HOUR RATED