

Winton Scott

Portland
Community
Health Center

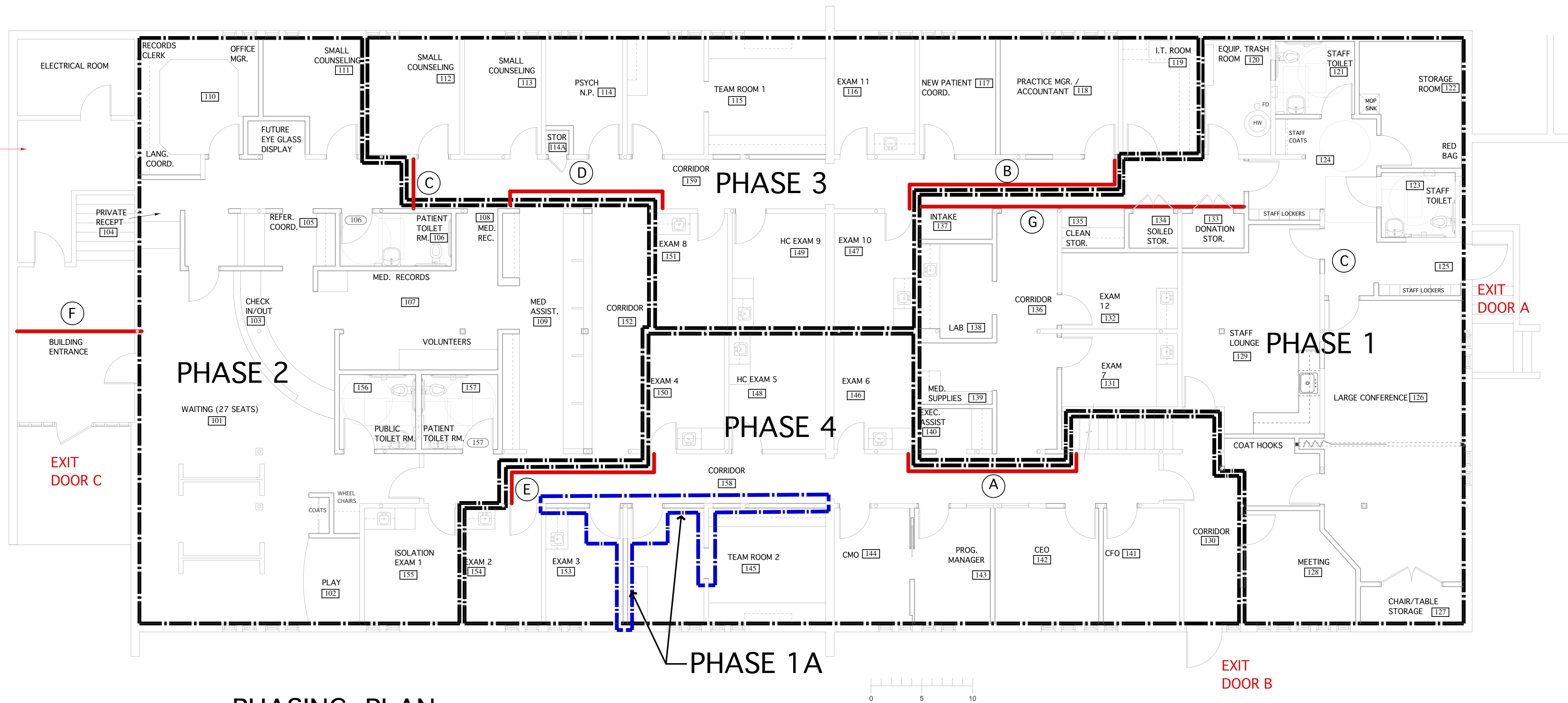
180 Park Avenue
Portland, Maine

CONSTRUCTION DOCUMENTS
August 31, 2012

Phasing Plan

Scale: As Noted

A 103



PHASING PLAN

GENERAL NOTES:

- TEMPORARY PARTITIONS TO CONSIST OF WOOD OR METAL STUDS WITH GWB ON ONE SIDE. TAPE JOINTS WITH DUCT TAPE. EXTEND PARTITIONS FROM FLOOR TO UNDER SIDE OF CEILING. PROVIDE A DOOR IN AT LEAST ONE PARTITION ENCLOSING EACH PHASE.
- SEE SPECIFICATIONS FOR SPECIFIC REQUIREMENTS FOR AIR QUALITY PROCEDURES.

PHASING NOTES:

- PHASE 1: INSTALL TEMPORARY PARTITIONS A AND B. CONTRACTOR MAY USE EXIT DOOR A. EXIT DOOR B MUST REMAIN FREE AND CLEAR FOR USE BY BUILDING OCCUPANTS. UPON COMPLETION OF PHASE, REMOVE TEMPORARY PARTITIONS A AND B.
- PHASE 1A: AFTER THE COMPLETION OF PHASE 1, COMPLETE DEMOLITION AND INSTALL NEW PARTITIONS AND DOORS AT LOCATIONS INDICATED. WORK TO BE COMPLETED OUTSIDE OF CLINIC BUSINESS HOURS.
- PHASE 2: INSTALL TEMPORARY PARTITIONS C, D, E AND F. DURING THIS PHASE, THE RECEPTION FUNCTION WILL BE MOVED TO THE PHASE 1 AREA AND BUILDING OCCUPANTS WILL USE EXIT DOOR B AS THE PRIME ENTRANCE. SECOND FLOOR TENANTS WILL USE EXIT DOOR D. THE CONTRACTOR MAY USE EXIT DOOR C FOR ACCESS TO THE CONSTRUCTION AREA. AT COMPLETION OF PHASE, REMOVE TEMPORARY PARTITION E.
- PHASE 3: TEMPORARY PARTITIONS C AND D REMAIN IN PLACE FROM PHASE 2. INSTALL TEMPORARY PARTITION G. CONTRACTOR ACCESS TO THIS AREA IS LIMITED. CONTRACTOR TO USE EXIT DOOR A AND COORDINATE MOVING OF WORKERS AND MATERIALS THROUGH OCCUPIED AREAS WITH TENANT. UPON COMPLETION OF PHASE, REMOVE PARTITIONS C, D, AND G.
- PHASE 4: INSTALL TEMPORARY PARTITIONS A AND E. CONTRACTOR MAY USE EXIT DOOR B. UPON COMPLETION OF PHASE, REMOVE PARTITIONS A AND E.