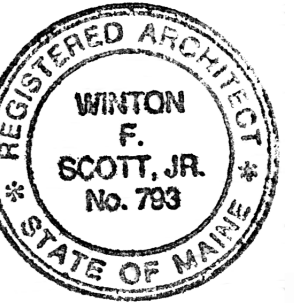


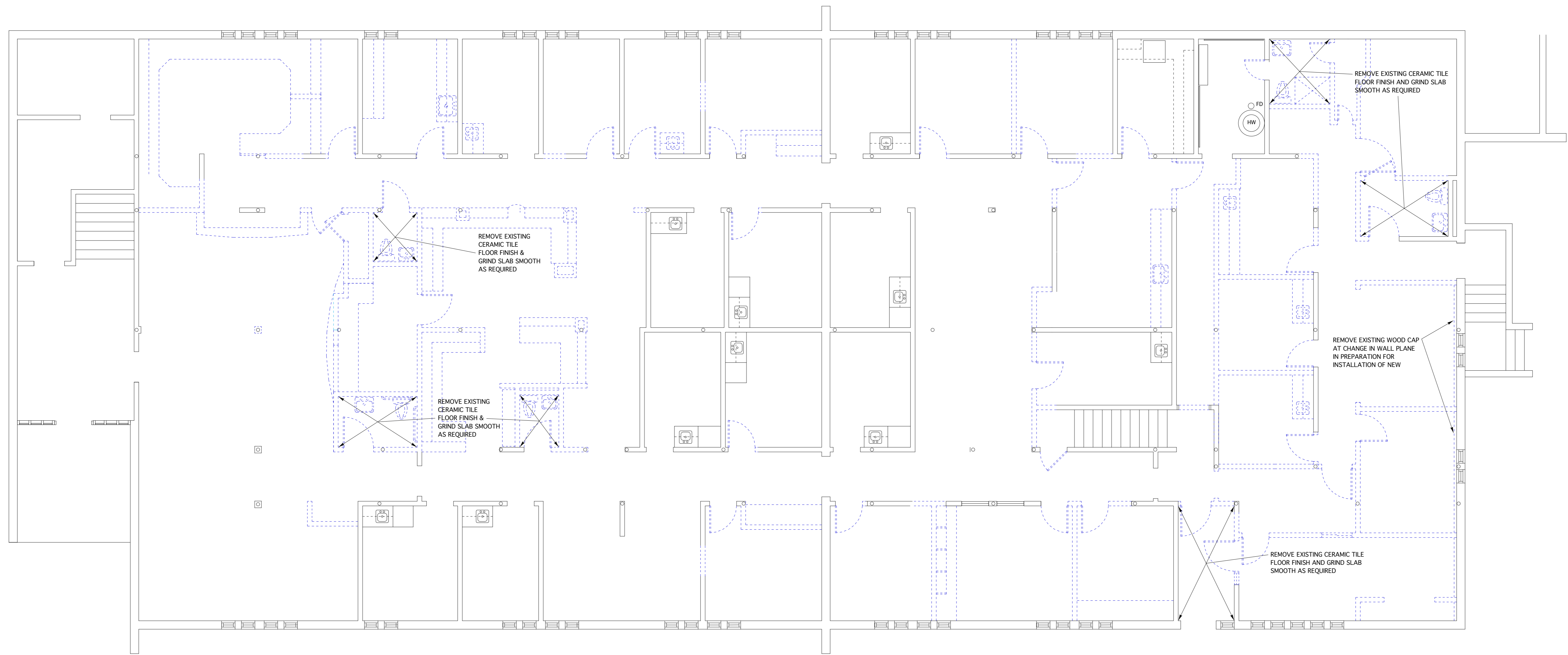


Winton Scott Architects  
 5 Milk Street  
 Portland, Maine 04101  
 207 774 4811  
 www.wintonsscott.com

Architecture / Planning  
 Preservation Architecture  
 Interior Architecture



*Winton Scott*



# DEMOLITION PLAN

3/16"=1'-0"

## NOTES

1. EXISTING DOORS/FRAMES SCHEDULED TO REMAIN ARE NOT SHOWN ON DEMOLITION PLAN
2. SEE MECHANICAL AND ELECTRICAL DRAWINGS FOR ADDITIONAL REMOVALS.
3. SEE REFLECTED CEILING PLAN FOR EXTENT OF EXISTING CEILINGS TO REMAIN.
- 4.

Portland  
 Community  
 Health Center

180 Park Avenue  
 Portland, Maine

CONSTRUCTION DOCUMENTS  
 August 31, 2012

Demolition Plan

Scale: As Noted