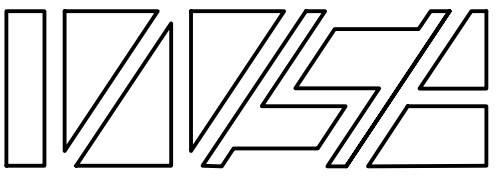


DEMOLITION NOTES:

1. SEE E000 FOR ELECTRICAL LEGEND, ABBREVIATIONS, AND GENERAL NOTES.
2. PHASING FOR ELECTRICAL DEMOLITION IS AS SHOWN BELOW AND ON ARCHITECTURAL PHASING PLAN.
3. SEE SHEET A103 FOR ADDITIONAL PHASING INFORMATION.
4. ELECTRICAL DEVICES SHOWN IN BOLD TO BE REMOVED ALONG WITH ALL ASSOCIATED COMPONENTS I.E. WIRING, CONDUIT ETC.
5. FOR EXISTING ELECTRICAL DEVICES TO REMAIN, RE-USE EXISTING WIRING AND CONDUIT WHERE APPLICABLE. IN CASES WHERE EXISTING WIRING CANNOT BE RE-USED AND WALL IS INACCESSIBLE, CONTRACTOR SHALL PULL EXISTING WIRING BACK AND INSTALL A JUNCTION BOX AT FIRST ACCESSIBLE CEILING LOCATION FOR CONNECTION TO NEW PANEL CIRCUIT.

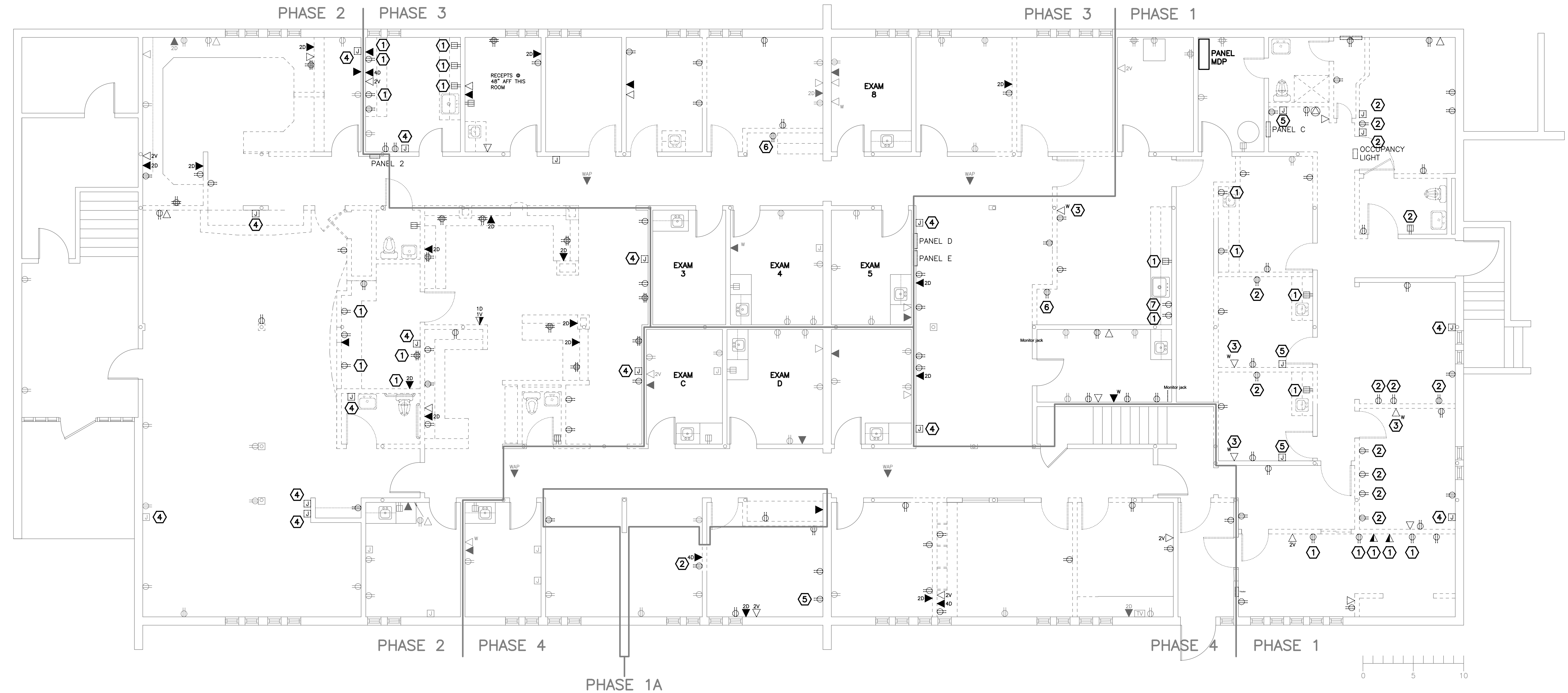
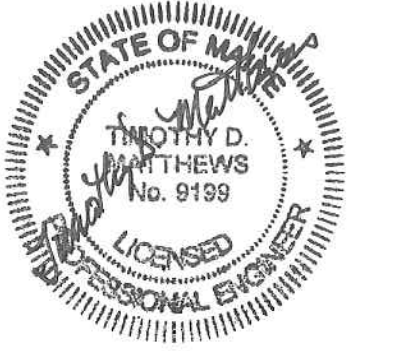
KEYED NOTES:

- 1 COUNTERTOP RECEPTACLE.
- 2 RECEPTACLE MOUNTED ABOVE 18" AFF (I.E. 24", 36", 48", 60").
- 3 WALL PHONE MOUNTED APPROXIMATELY 60" AFF.
- 4 RECEPTACLE WITH BLANK COVERPLATE.
- 5 JUNCTION BOX/RECEPTACLE FOR X-RAY VIEWING LIGHT.
- 6 REFRIGERATOR.
- 7 DISHWASHER.



Winton Scott Architects
5 Milk Street
Portland, Maine 04101
207 774 4811
www.wintonsscott.com

Architecture / Planning
Preservation Architecture
Interior Architecture



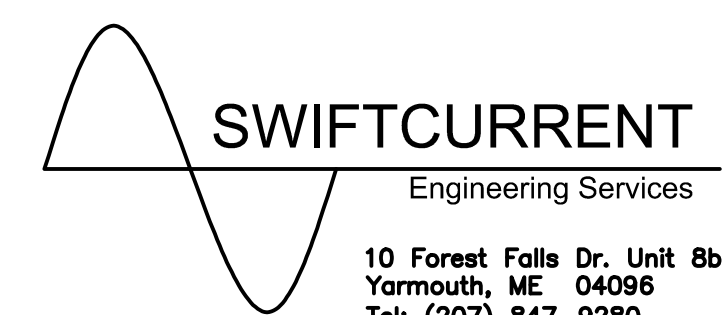
1 ELECTRICAL POWER DEMOLITION PLAN
SCALE: 3/16" = 1'-0"

Portland
Community
Health Center

180 Park Avenue
Portland, Maine

CONSTRUCTION DOCUMENTS
August 31, 2012

ELECTRICAL
DEMOLITION PLAN
3/16" = 1'-0"



10 Forest Falls Dr. Unit 8b
Yarmouth, ME 04096
Tel: (207) 847-9280

E 100