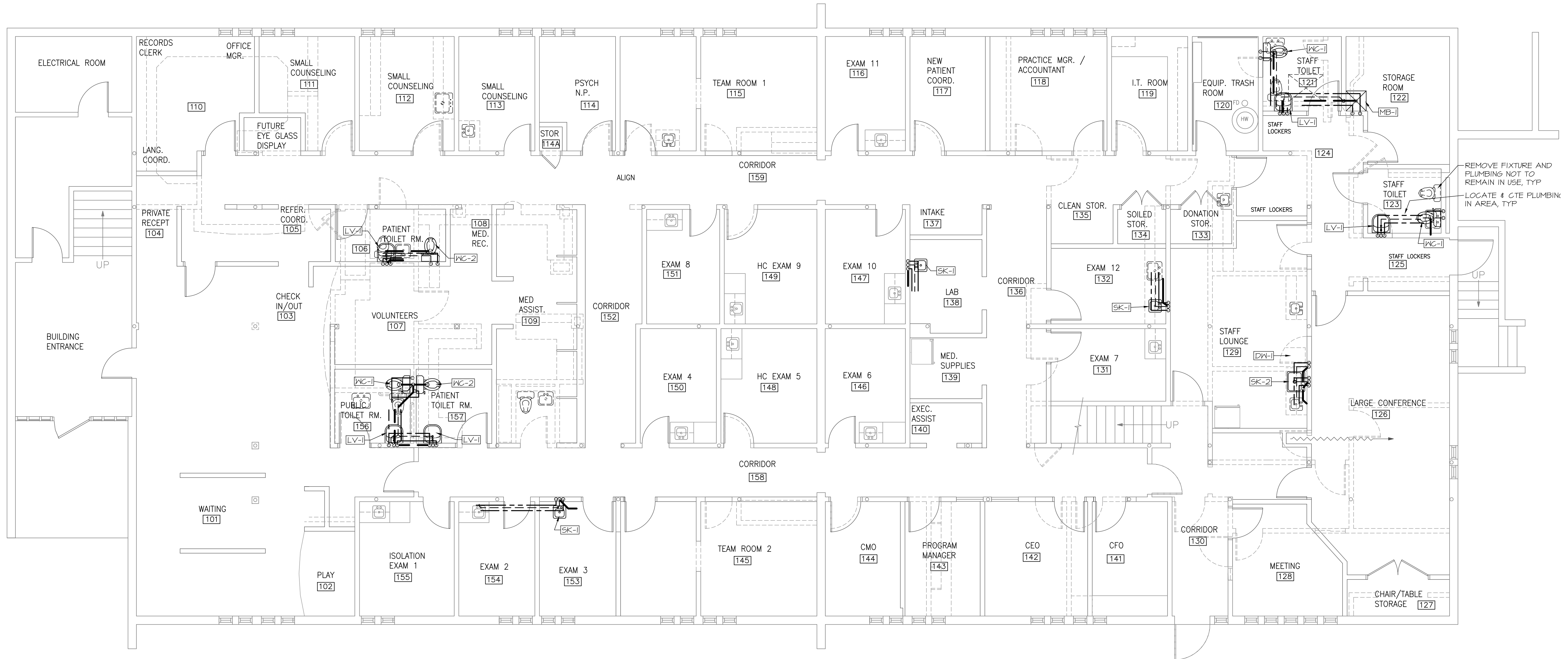
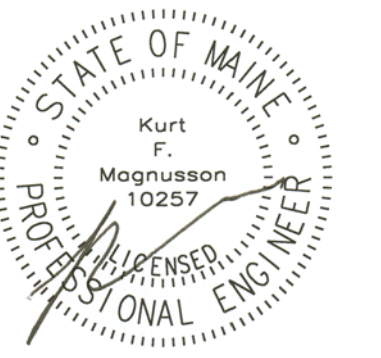


Winton Scott Architects
5 Milk Street
Portland, Maine 04101
207 774 4811
www.wintonsscott.com

Architecture / Planning
Preservation Architecture
Interior Architecture



PLUMBING DEMO AND NEW WORK

SCALE: 3/16" = 1'-0"

Portland
Community
Health Center

180 Park Avenue
Portland, Maine

CONSTRUCTION DOCUMENTS
August 31, 2012

Plumbing
Plans

Scale: Noted

MECHANICAL SYSTEMS ENGINEERS
ROYAL RIVER CENTER, UNIT #10
10 FOREST FALLS DRIVE
YARMOUTH, MAINE 04096
FACEBOOK: MECHANICAL SYSTEMS ENGINEERS
207-846-1441
M.S.E. Proj. 1221
© COPYRIGHT 2012

P1

