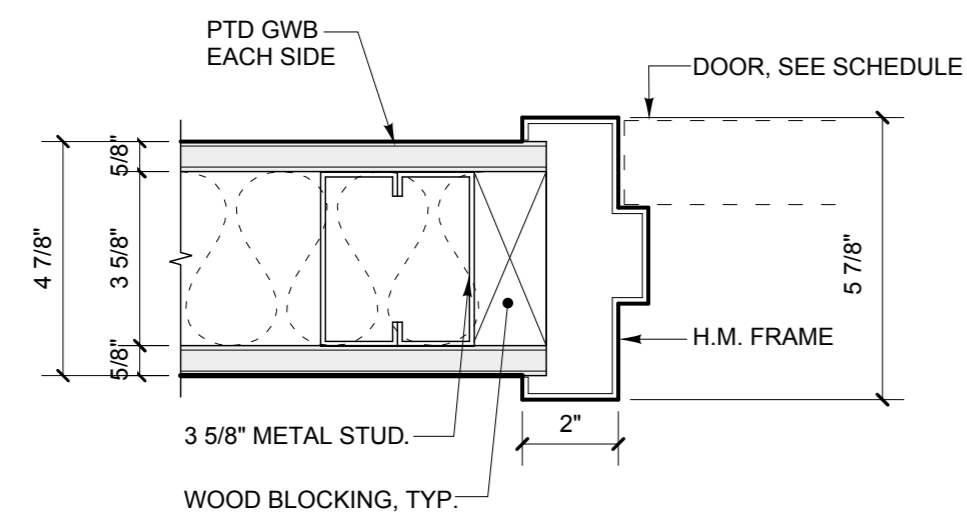
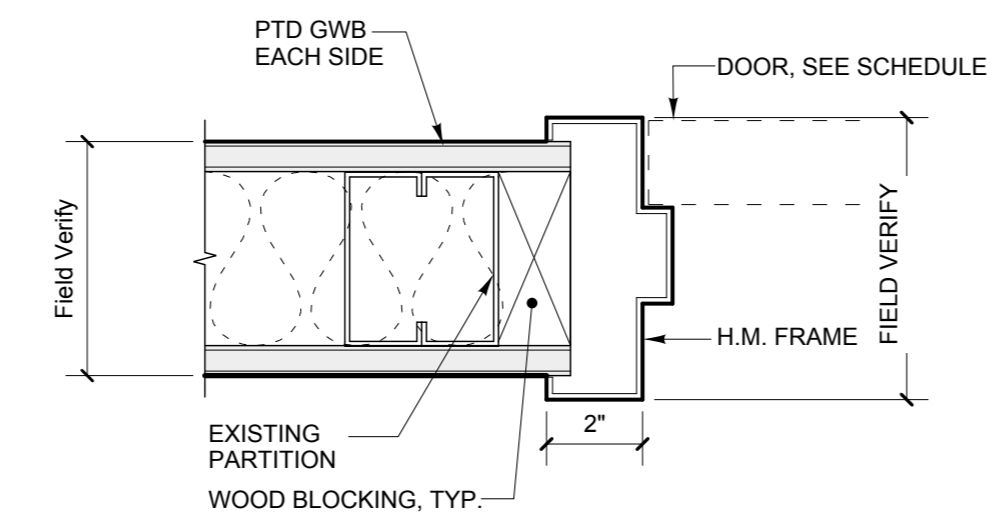


DOOR & FRAME SCHEDULE														
General			Door			Frame			Details					
Door No.	Size (W x H)	Thickness	Material	Finish	Type	Material	Finish	Type	Head	Jamb	Threshold	Hardware	Label	Remarks
FIRST FLOOR														
101	3'-0" X 6'-8" EX.	1 3/4"	SCWD	Ptd	A	HM	Ptd	F1	--	--	--	--	--	See note 1
101.1	3'-0" X 6'-8"	1 3/4"	SCWD	Ptd	A	HM	Ptd	F1	H1	J1	--	HW1A	--	See note 4
101.2	3'-0" X 6'-8" EX.	1 3/4"	SCWD	Ptd	A	HM	Ptd	F1	--	--	--	--	--	See note 4
106	3'-0" X 6'-8"	1 3/4"	SCWD	Ptd	A	HM	Ptd	F1	H1	J1	T1	HW2	--	See note 2
110	3'-0" X 6'-8"	1 3/4"	SCWD	Ptd	A	HM	Ptd	F1	H1	J1	--	HW1	--	
111	3'-0" X 6'-8"	1 3/4"	SCWD	Ptd	A	HM	Ptd	F1	H2	J2	--	HW1	--	See note 2
112	3'-0" X 6'-8"	1 3/4"	SCWD	Ptd	A	HM	Ptd	F1	H2	J2	--	HW1	--	See note 2
113	2'-8" X 6'-8" EX.	1 3/4"	SCWD	Ptd	A	HM	Ptd	F1	--	--	--	HW1	--	See notes 1 & 2
114	3'-0" X 6'-8"	1 3/4"	SCWD	Ptd	A	HM	Ptd	F1	H2	J2	--	HW1	--	See note 2
114.A	1'-10" X 6'-8"	1 3/4"	SCWD	Ptd	A	HM	Ptd	F1	H2	J2	T1	HW1	--	See note 2
115	3'-0" X 6'-8"	1 3/4"	SCWD	Ptd	A	HM	Ptd	F1	H2	J2	--	HW1	--	
116	2'-8" X 6'-8" EX.	1 3/4"	SCWD	Ptd	A	HM	Ptd	F1	--	--	T1	--	--	See notes 1 & 2
117	3'-0" X 6'-8"	1 3/4"	SCWD	Ptd	A	HM	Ptd	F1	H2	J2	--	HW1	--	See note 2
118	3'-0" X 6'-8"	1 3/4"	SCWD	Ptd	A	HM	Ptd	F1	H2	J2	--	HW1	--	See note 2
119	3'-0" X 6'-8"	1 3/4"	SCWD	Ptd	A	HM	Ptd	F1	H2	J2	T1	HW1	--	See note 2
120	3'-0" X 6'-8" EX.	1 3/4"	SCWD	Ptd	A	HM	Ptd	F1	--	--	T1	--	--	
121	3'-0" X 6'-8"	1 3/4"	SCWD	Ptd	A	HM	Ptd	F1	H1	J1	T1	HW2	--	See note 2
122	3'-0" X 6'-8"	1 3/4"	SCWD	Ptd	A	HM	Ptd	F1	H1	J1	T1	HW1	--	
123	3'-0" X 6'-8"	1 3/4"	SCWD	Ptd	A	HM	Ptd	F1	H1	J1	T1	HW2	--	See note 2
124	3'-0" X 6'-8"	1 3/4"	SCWD	Ptd	A	HM	Ptd	F1	H1	J1	--	HW1A	--	
125	3'-6" X 6'-8" EX.	1 3/4"	SCWD	Ptd	A	HM	Ptd	F1	--	--	--	--	--	See note 1
126	3'-0" X 6'-8"	1 3/4"	SCWD	Ptd	A	HM	Ptd	F1	H1	J1	--	HW1	--	
126.1	3'-0" X 6'-8"	1 3/4"	SCWD	Ptd	A	HM	Ptd	F1	H1	J1	--	HW1A	60 min.	
127	PR 3'-0" X 6'-8"	1 3/4"	SCWD	Ptd	A	HM	Ptd	F1	H1	J1	--	HW3	--	
128	3'-0" X 6'-8"	1 3/4"	SCWD	Ptd	A	HM	Ptd	F1	H2	J2	--	HW1A	60 min.	
129	3'-0" X 6'-8"	1 3/4"	SCWD	Ptd	A	HM	Ptd	F1	H2	J2	T1	HW1	--	
129.1	3'-0" X 6'-8"	1 3/4"	SCWD	Ptd	A	HM	Ptd	F1	H1	J1	T1	HW1A	60 min.	
130	3'-0" X 6'-8" EX.	1 3/4"	SCWD	Ptd	A	HM	Ptd	F1	--	--	--	--	60 min	See note 3
130.1	3'-6" X 6'-8" EX.	1 3/4"	SCWD	Ptd	A	HM	Ptd	F1	--	--	--	--	--	See note 1
131	3'-0" X 6'-8"	1 3/4"	SCWD	Ptd	A	HM	Ptd	F1	H1	J1	T1	HW1	--	See note 2
132	3'-0" X 6'-8"	1 3/4"	SCWD	Ptd	A	HM	Ptd	F1	H2	J2	T1	HW1	--	See note 2
133	PR 2'-0" X 6'-8"	1 3/4"	SCWD	Ptd	A	HM	Ptd	F1	H1	J1	--	HW3	--	
134	PR 2'-0" X 6'-8"	1 3/4"	SCWD	Ptd	A	HM	Ptd	F1	H1	J1	--	HW3	--	
141	3'-0" X 6'-8"	1 3/4"	SCWD	Ptd	A	HM	Ptd	F1	H2	J2	--	HW1	--	See note 2
142	3'-0" X 6'-8"	1 3/4"	SCWD	Ptd	A	HM	Ptd	F1	H2	J2	--	HW1	--	See note 2
143	3'-0" X 6'-8"	1 3/4"	SCWD	Ptd	A	HM	Ptd	F1	H2	J2	--	HW1	--	See note 2
144	3'-0" X 6'-8"	1 3/4"	SCWD	Ptd	A	HM	Ptd	F1	H2	J2	--	HW1	--	See note 2
144.1	3'-0" X 6'-8"	1 3/4"	SCWD	Ptd	A	--	--	--	H3	J3	--	HW4	--	Pocket door
145	3'-0" X 6'-8"	1 3/4"	SCWD	Ptd	A	HM	Ptd	F1	H1	J1	--	HW1	--	
146	2'-8" X 7'-0" EX.	1 3/4"	SCWD	Ptd	A	HM	Ptd	F1	--	--	T1	--	--	See note 2
147	2'-8" X 7'-0" EX.	1 3/4"	SCWD	Ptd	A	HM	Ptd	F1	--	--	T1	--	--	See note 2
148	3'-0" X 6'-8"	1 3/4"	SCWD	Ptd	A	HM	Ptd	F1	H2	J2	T1	HW1	--	See note 2
149	3'-0" X 6'-8"	1 3/4"	SCWD	Ptd	A	HM	Ptd	F1	H2	J2	T1	HW1	--	See note 2
150	2'-8" X 7'-0" EX.	1 3/4"	SCWD	Ptd	A	HM	Ptd	F1	--	--	T1	--	--	See note 2
151	2'-8" X 7'-0" EX.	1 3/4"	SCWD	Ptd	A	HM	Ptd	F1	--	--	T1	--	--	See note 2
153	3'-0" X 6'-8"	1 3/4"	SCWD	Ptd	A	HM	Ptd	F1	H1	J1	T1	HW1	--	See note 2
154	2'-8" X 7'-0" EX.	1 3/4"	SCWD	Ptd	A	HM	Ptd	F1	--	--	T1	--	--	See note 2
155	2'-8" X 7'-0" EX.	1 3/4"	SCWD	Ptd	A	HM	Ptd	F1	--	--	T1	--	--	See note 2
156	3'-0" X 6'-8"	1 3/4"	SCWD	Ptd	A	HM	Ptd	F1	H1	J1	T1	HW2	--	See note 2
157	3'-0" X 6'-8"	1 3/4"	SCWD	Ptd	A	HM	Ptd	F1	H1	J1	T1	HW2	--	See note 2

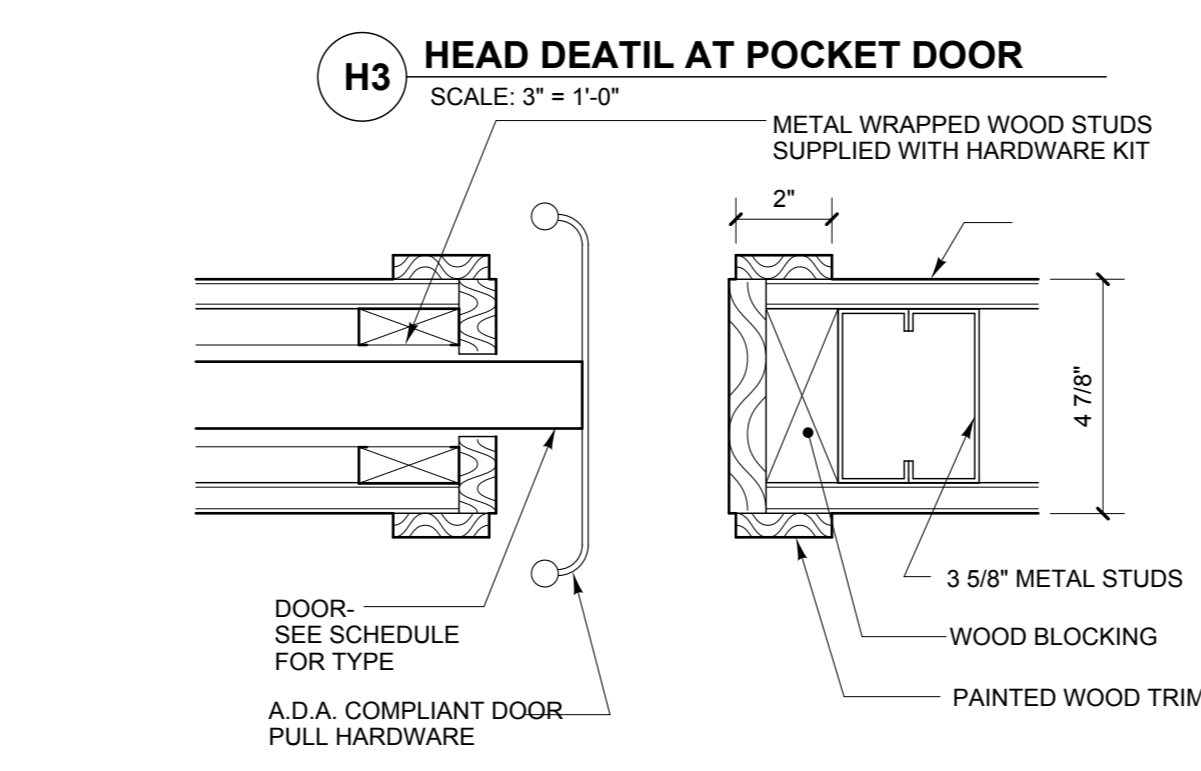
USE FIRESTOP AT ALL FIRE RATED ASSEMBLIES TO MAINTAIN REQUIRED FIRE RATING.



J1 H1 JAMB DETAIL / HEAD SIMILAR
SCALE: 3" = 1'-0"



J2 H2 JAMB DETAIL / HEAD SIMILAR
SCALE: 3" = 1'-0"

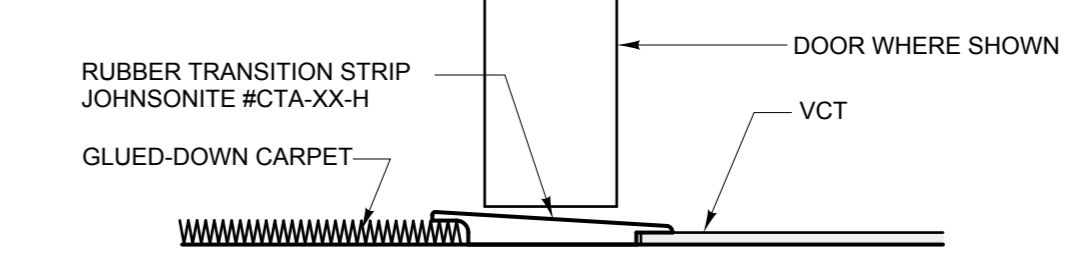


H3 JAMB DETAIL AT POCKET DOOR
SCALE: 3" = 1'-0"

FINISH SCHEDULE				
Room Name	Floor	Base	Walls	Remarks
Waiting 101	Carpet	4" rubber	PAINT	NOTE 1
Play 102	Carpet	4" rubber	PAINT	NOTE 1
Check in / out 103	Carpet	4" rubber	Ptd GWB	
Private Reception 104	VCT	4" rubber	PAINT	NOTE 1
Refer. Coord. 105	Carpet	4" rubber	PAINT	NOTE 1
Patient Toilet Room 106	VCT	4" rubber	Ptd GWB	
Volunteers 107	Carpet	4" rubber	Ptd GWB	
Medical Records 108	Carpet	4" rubber	Ptd GWB	
Med. Assist. 109	Carpet	4" rubber	PAINT	NOTE 1
Office 110	Carpet	4" rubber	PAINT	NOTE 1
Small Counseling 111	Carpet	4" rubber	PAINT	NOTE 1
Small Counseling 112	Carpet	4" rubber	PAINT	NOTE 1
Small Counseling 113	Carpet	4" rubber	PAINT	NOTE 1
Psych. N.P. 114	Carpet	4" rubber	PAINT	NOTE 1
Team Room 1 115	Carpet	4" rubber	PAINT	NOTE 1
Exam 11 116	Exist. VCT	Exist. rubber	PAINT	NOTE 1
New Patient Coord. 117	Carpet	4" wood	PAINT	NOTE 1
Practice Mngr / Accountant 118	Carpet	4" rubber	PAINT	NOTE 1
I.T. Room 119	Exist. VCT	Exist. rubber	PAINT	NOTE 1
Equip. Trash Room 120	Exist. VCT	Exist. rubber	PAINT	NOTE 1
Staff Toilet 121	VCT	4" rubber	PAINT	NOTE 1
Storage Room 122	VCT	4" rubber	PAINT	NOTE 1
Staff Toilet 123	VCT	4" rubber	PAINT	NOTE 1
Staff Lockers 124	Carpet	4" rubber	PAINT	NOTE 1
Staff Lockers 125	Carpet	4" rubber	PAINT	NOTE 1
Large Conference 126	Carpet	4" rubber	PAINT	NOTE 1
Chair / Table Storage 127	Carpet	4" rubber	PAINT	NOTE 1
Meeting 128	Carpet	4" rubber	PAINT	NOTE 1
Staff Lounge 129	VCT	4" rubber	PAINT	NOTE 1
Corridor 130	Carpet	4" rubber	PAINT	NOTE 1
Exam 7 131	VCT	4" rubber	PAINT	NOTE 1
Exam 12 132	VCT	4" rubber	PAINT	NOTE 1
Donation Storage 133	Carpet	4" rubber	PAINT	NOTE 1
Soiled Storage 134	Carpet	4" rubber	PAINT	NOTE 1
Clean Storage 135	Carpet	4" rubber	PAINT	NOTE 1
Corridor 136	Carpet	4" rubber	PAINT	NOTE 1
Intake 137	VCT	4" rubber	PAINT	NOTE 1
Lab 138	VCT	4" rubber	PAINT	NOTE 1
Med. Supplies 139	VCT	4" rubber	PAINT	NOTE 1
Exec. Assist. 140	Carpet	4" rubber	PAINT	NOTE 1
CFO 141	Carpet	4" rubber	PAINT	NOTE 1
CEO 142	Carpet	4" rubber	PAINT	NOTE 1
Program Manager 143	Carpet	4" rubber	PAINT	NOTE 1
CMO 144	Carpet	4" rubber	PAINT	NOTE 1
Team Room 2 145	Carpet	4" rubber	PAINT	NOTE 1
Exam 6 146	Exist. VCT	Exist. rubber	PAINT	NOTE 1
Exam 10 147	Exist. VCT	Exist. rubber	PAINT	NOTE 1
HC Exam 5 148	Exist. VCT	Exist. rubber	PAINT	NOTE 1
HC Exam 9 149	Exist. VCT	Exist. rubber	PAINT	NOTE 1
Exam 4 150	Exist. VCT	Exist. rubber	PAINT	NOTE 1
Exam 8 151	Exist. VCT	Exist. rubber	PAINT	NOTE 1
Corridor 152	Carpet	4" rubber	PAINT	NOTE 1
Exam 3 153	VCT	4" rubber	PAINT	NOTE 1
Exam 2 154	Exist. VCT	Exist. rubber	PAINT	NOTE 1
Isolation Exam 1 155	Exist. VCT	Exist. rubber	PAINT	NOTE 1
Public Toilet Room 156	VCT	4" rubber	Ptd GWB	
Patient Toilet Room 157	VCT	4" rubber	Ptd GWB	

FINISH NOTES

1- MOST OF THE EXISTING WALLS TO BE PAINTED HAVE BEEN PREVIOUSLY PAINTED OVER WALL PAPER COVERING. NEW WALLS TO BE PAINTED ARE GYPSUM DRYWALL.



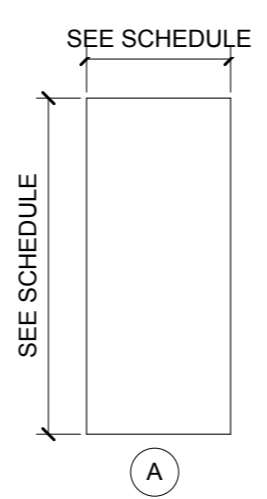
T1 TRANSITION STRIP ON CONCRETE SLAB
SCALE: 6" = 1'-0"

ABBREVIATIONS

- SCWD Solid Core Wood Door
- Cl. F. Clear Finish
- F.F. Factory Finish
- HM Hollow Metal
- GHM Galvanized Hollow Metal
- Ptd. Painted
- HW Hardware Set
- TG Tempered Glass
- FG Fire Glass
- AL Aluminum Storefront
- EX Existing

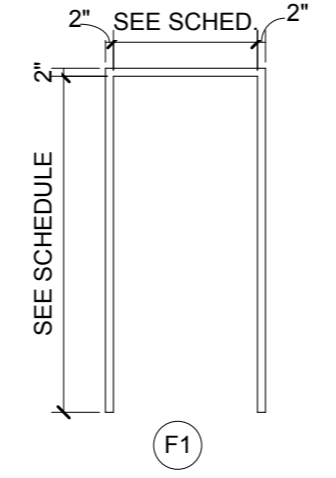
DOOR TYPES

1/4" = 1'-0"



DOOR FRAME TYPES

1/4" = 1'-0"



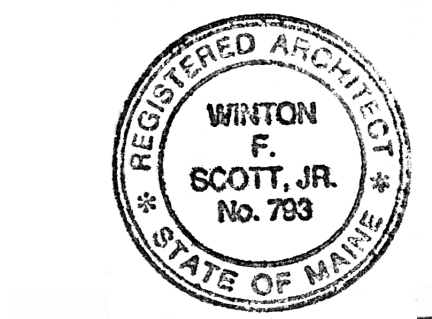
DOOR AND FRAME NOTES

- EXISTING DOOR AND FRAME TO REMAIN. RE-PAINT AND INSTALL NEW HARDWARE WHERE SCHEDULED.
- PROVIDE COAT HOOK MODEL #B-682 BY BOBRICK MOUNTED ON ROOM SIDE OF THE DOOR AT MANUFACTURER'S RECOMMENDED HEIGHT FOR ADA COMPLIANCE. COORDINATE W/BATHROOM ACCESSORIES PROVIDER.
- EXISTING DOOR & FRAME TO REMAIN. PAINT AND INSTALL NEW HARDWARE WHERE SCHEDULED. PLEASE CONFIRM THAT DOOR AND FRAME ARE 60 MIN. FIRE RATED.
- EXISTING DOOR AND FRAME TO REMAIN. SAND AND REFINISH DOOR WITH ONE COAT POLY SHADE TINTED POLYURETHANE AND TOP COAT OF CLEAR POLYURETHANE.



Winton Scott Architects
5 Milk Street
Portland, Maine 04101
207 774 4811
www.wintonscott.com

Architecture / Planning
Preservation Architecture
Interior Architecture



Winton Scott

Portland
Community
Health Center

180 Park Avenue
Portland, Maine

CONSTRUCTION DOCUMENTS
August 31, 2012

Schedules

Scale: AS Noted