

project name

Butler Payson
pine st.
state st.
portland, me

avesta housing

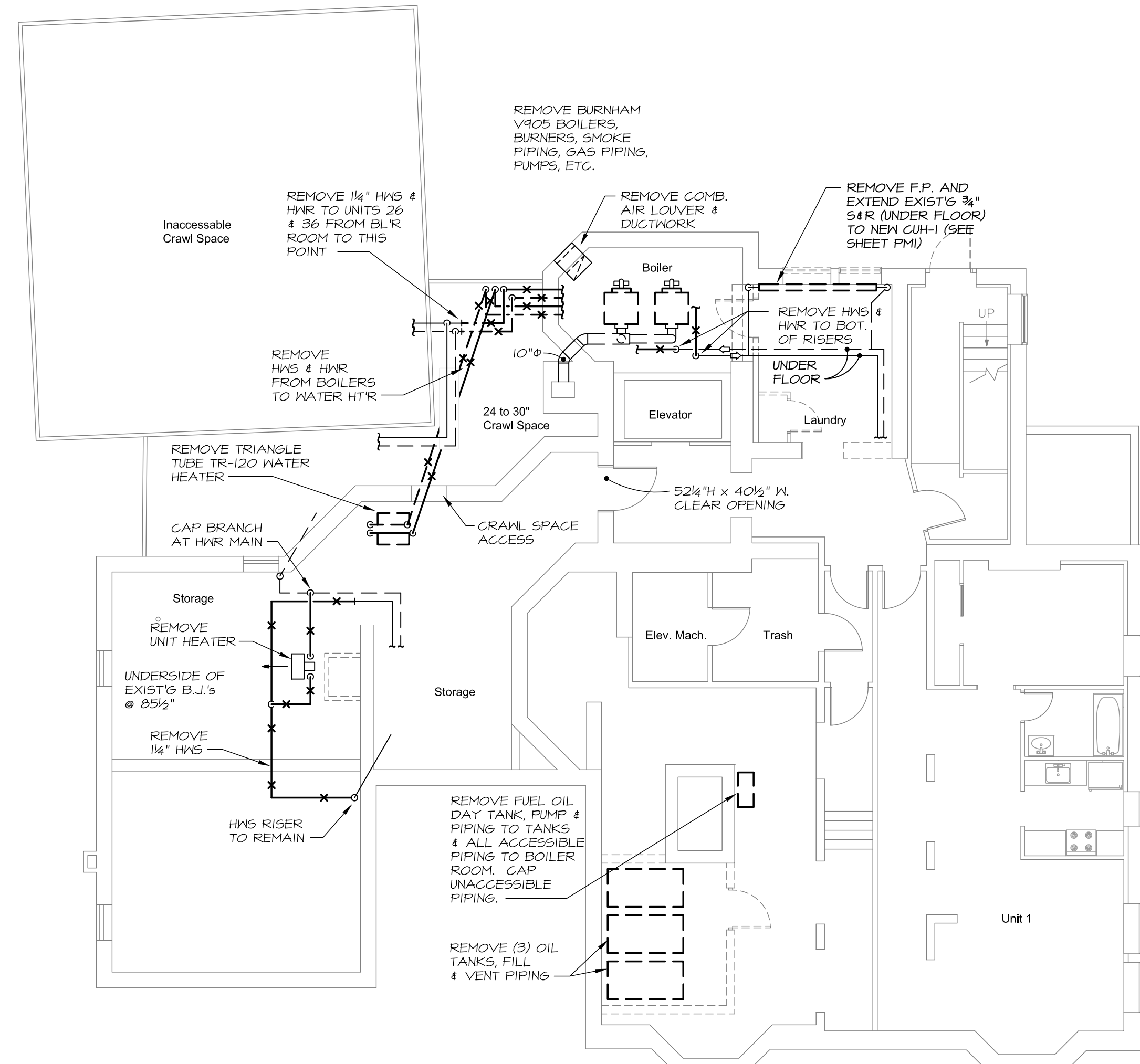
goduti/thomas architects

44 oak st.

portland, maine 04101

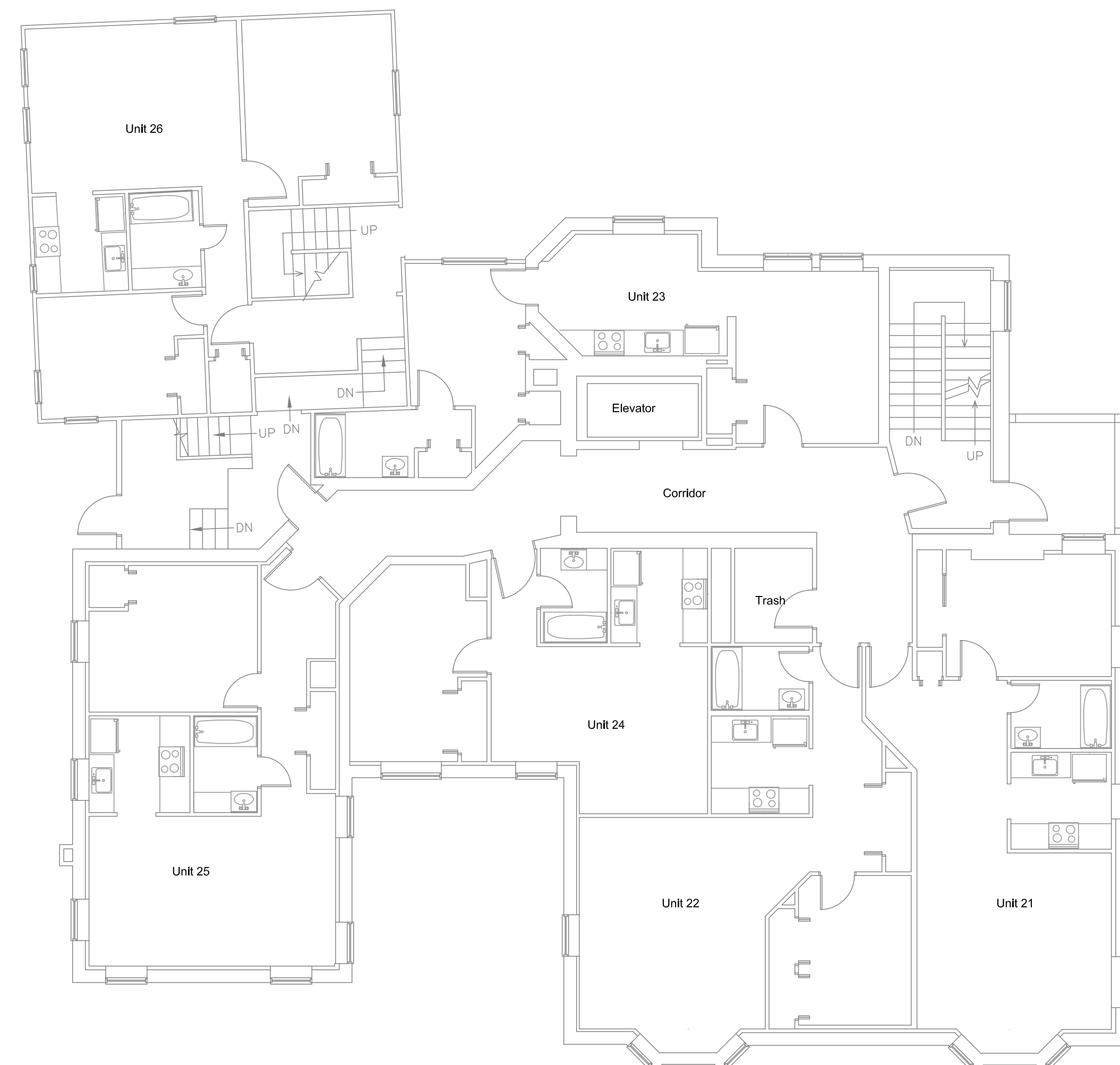
ph. 207-775-3184

fax 207-774-0486



REMOVE ALL EXISTING BATHROOM, KITCHEN & TRASH ROOM EXHAUST FANS THROUGHOUT THE BUILDING. SEAL DUCTS ABOVE CEILINGS WITH METAL CAPS. G.C. TO PATCH CEILINGS.

1 FIRST FLOOR MECHANICAL DEMOLITION PLAN
SCALE: 1/8" = 1'-0"



2 SECOND FLOOR MECHANICAL DEMOLITION PLAN
SCALE: 1/8" = 1'-0"

PERMIT SET

revisions

date
January 13, 2015

sheet title

payson

mechanical demolition

scale

1/8" = 1'-0"

drawn by

R.E.M.

project number

butpay



MECHANICAL SYSTEMS ENGINEERS
ROYAL RIVER CENTER, UNIT 108
10 FOREST FALLS DRIVE, YARMOUTH, MAINE 04096
(207) 846-1441
FACEBOOK: MECHANICAL SYSTEMS ENGINEERS
© COPYRIGHT 2015



PMD1

