

project name

Butler Payson
pine st.
state st.
portland, me

avesta housing

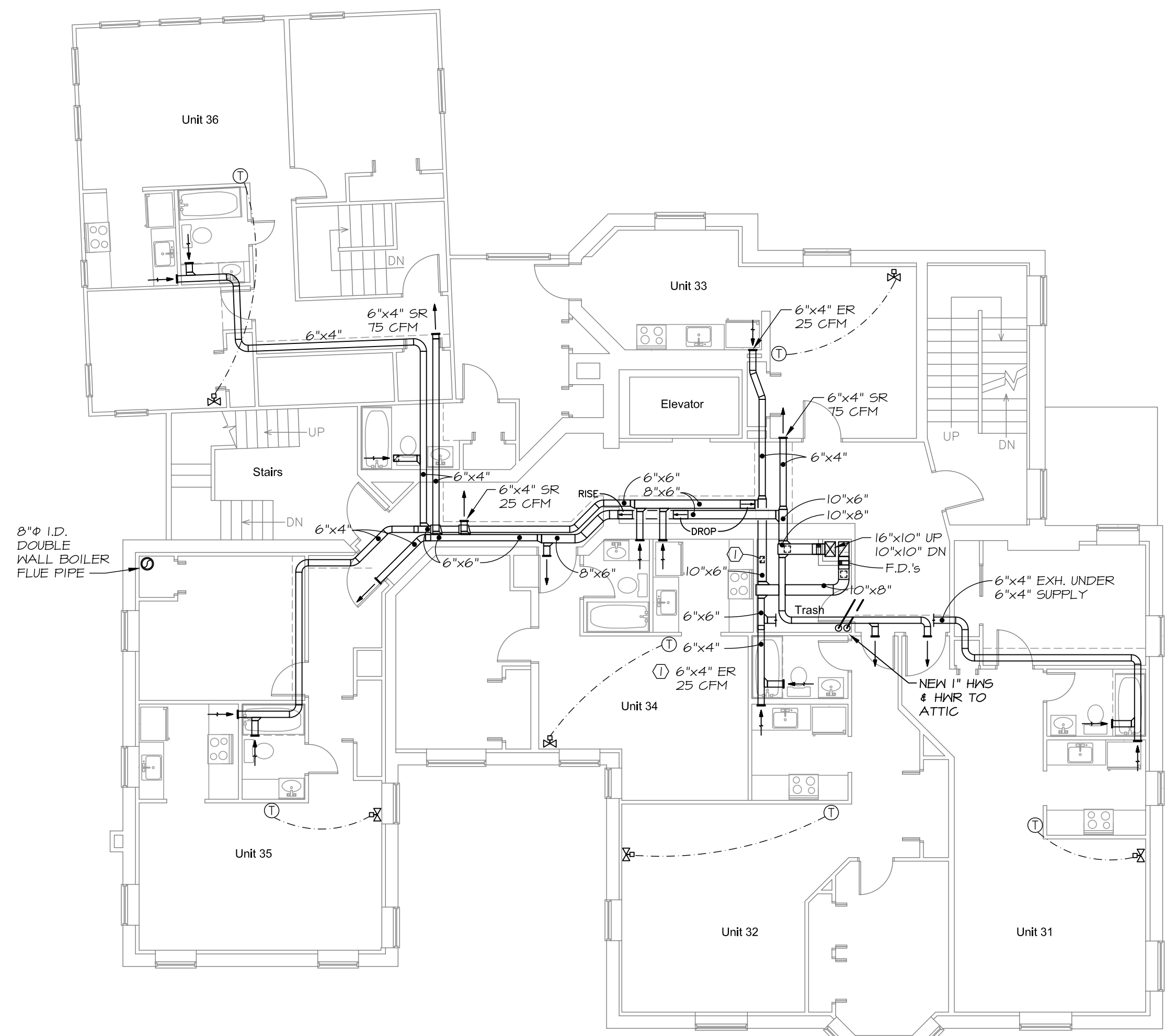
goduti/thomas architects

44 oak st.

portland, maine 04101

ph. 207-775-3184

fax 207-774-0486



1 THIRD FLOOR MECHANICAL PLAN
SCALE: 1/8" = 1'-0"

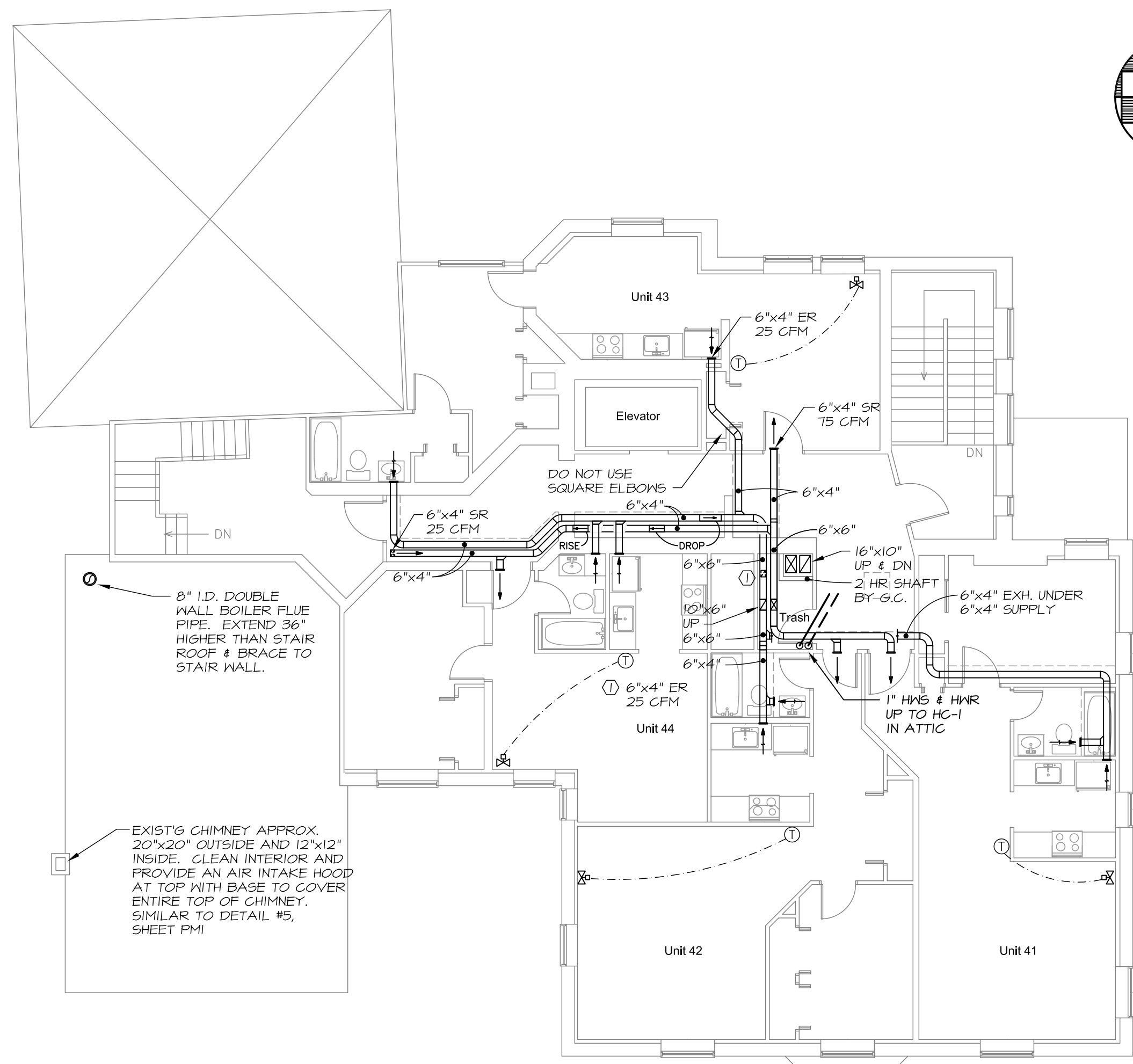
REPLACE EXISTING SELF-CONTAINED CONTROL VALVES IN FINNED TUBE COVERS w/NEW TWO POSITION, LOW VOLTAGE VALVES. PROVIDE NEW, REMOTE DIGITAL T-STATS WHERE SHOWN. EXACT LOCATIONS OF VALVES IN APARTMENTS IS ESTIMATED. FINNED TUBE IS SIMILAR TO STERLING "SENIOR" BASEBOARD.

SUPPLY AIR TO EACH APARTMENT TO BE 75 CFM WITH 6"x4" REGISTERS.

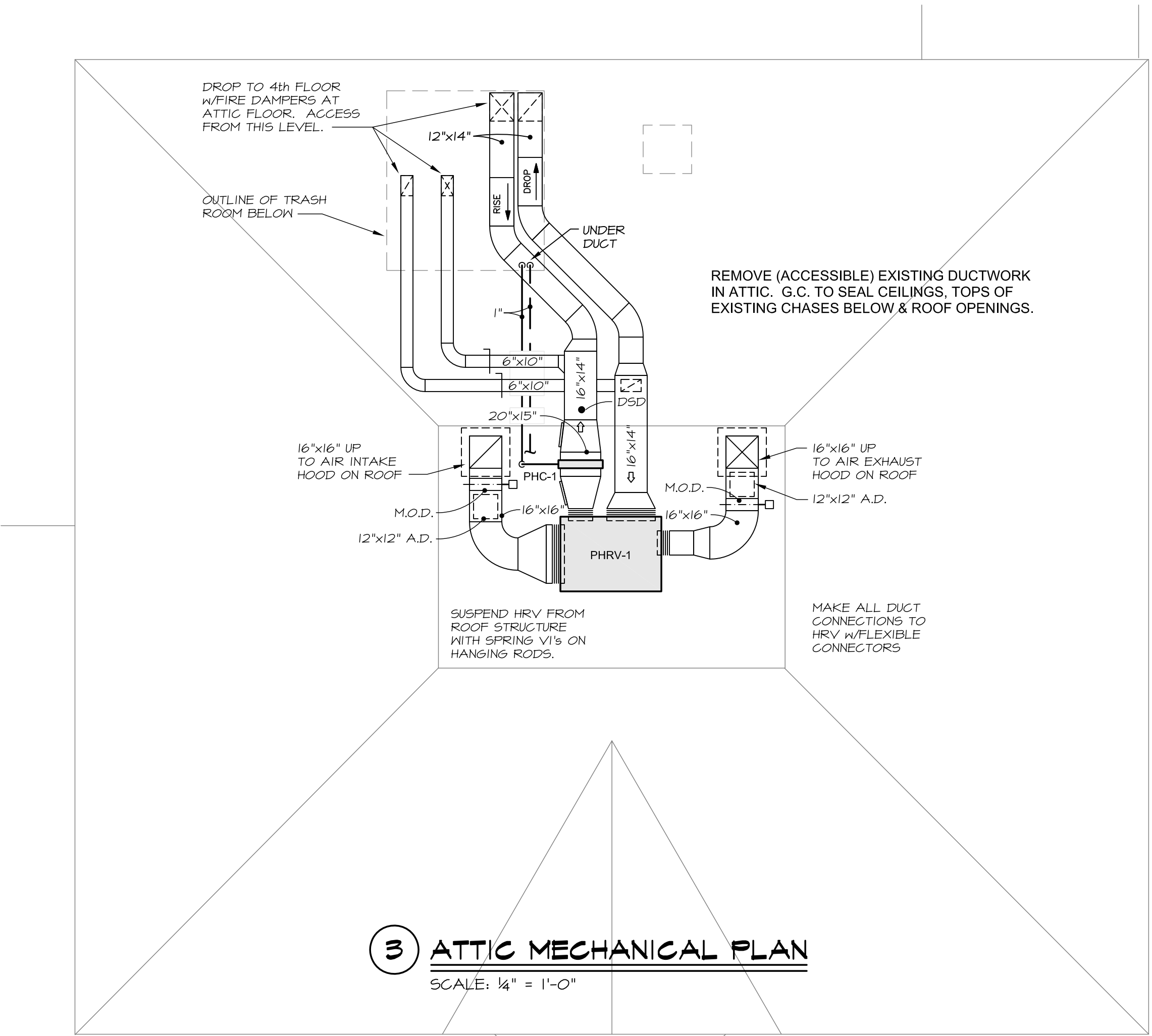
EXHAUST AIR FROM EACH BATHROOM TO BE 50 CFM WITH 6"x4" REGISTERS.

EXHAUST AIR FROM EACH KITCHEN TO BE 25 CFM WITH 6"x4" REGISTERS.

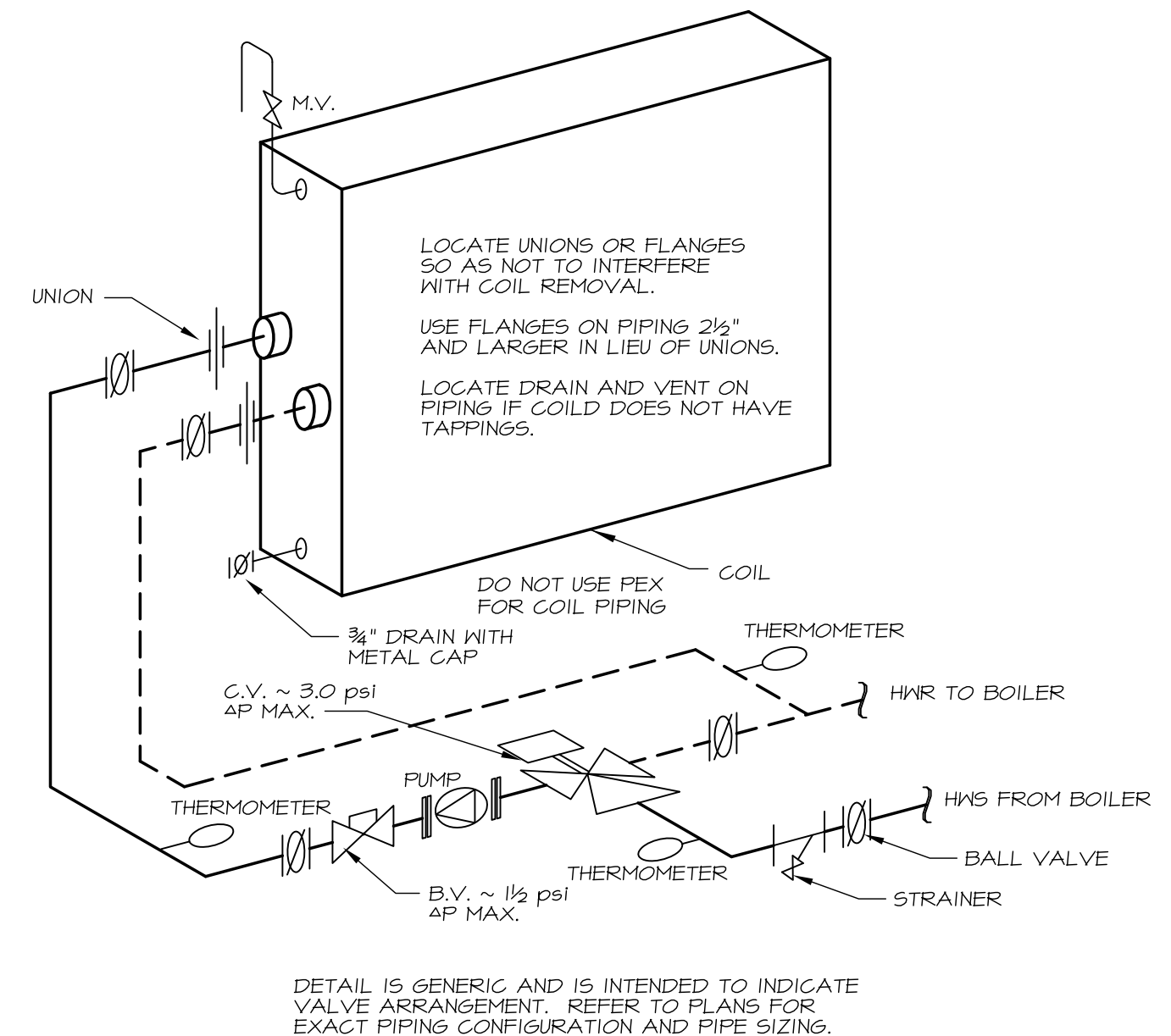
DUCTWORK TO INDIVIDUAL REGISTERS TO BE 6"x4" UNLESS NOTED OTHERWISE.



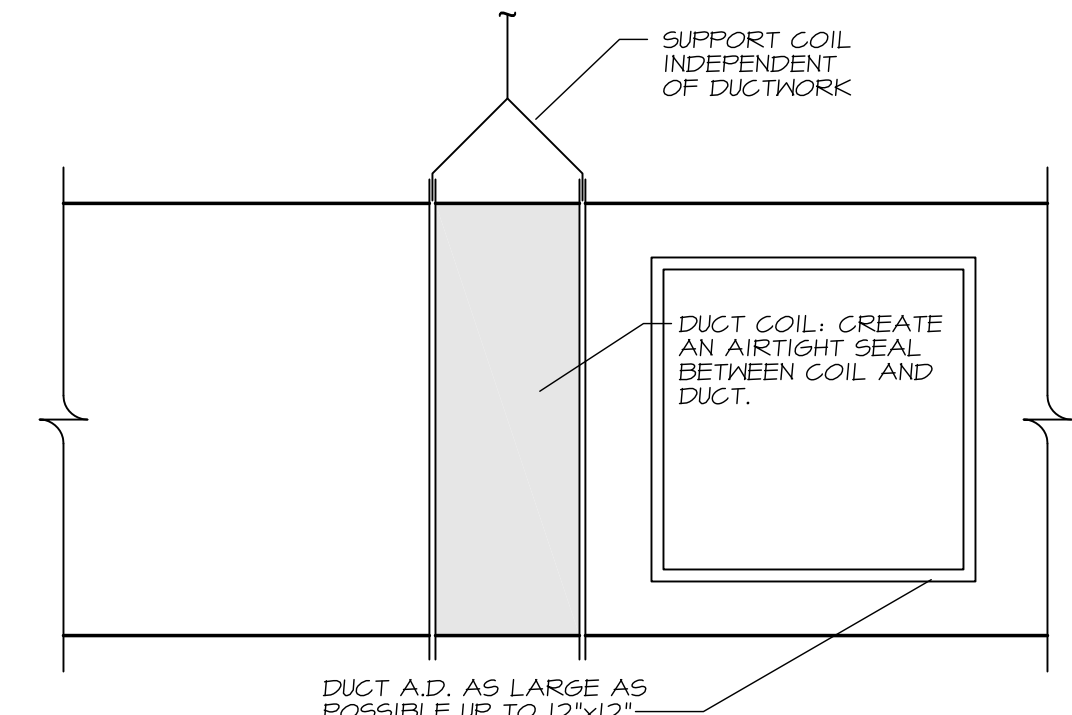
2 FOURTH FLOOR MECHANICAL PLAN
SCALE: 1/8" = 1'-0"



3 ATTIC MECHANICAL PLAN
SCALE: 1/4" = 1'-0"



4 HOT WATER COIL PIPING
NO SCALE



5 DUCT HEATING COIL MOUNTING
NO SCALE

PERMIT SET

revisions

date
January 13, 2015

sheet title

payson

third and fourth floor
mechanical plans

scale

1/8" = 1'-0"

drawn by

R.E.M.

project number

butpay



MECHANICAL SYSTEMS ENGINEERS
ROYAL RIVER CENTER, UNIT 10B
10 FOREST FALLS DRIVE, YARMOUTH, MAINE 04096
(207) 846-1441
FACEBOOK: MECHANICAL SYSTEMS ENGINEERS
© COPYRIGHT 2015



PM2



E:\projects\09_2015 - 853.am
\\MSEFFS\shared\Projects\1434 Payson Building\Drawings\1434 PMI-PM2.dwg