

project name

**Butler Payson**  
pine st.  
state st.  
portland, me

avesta housing

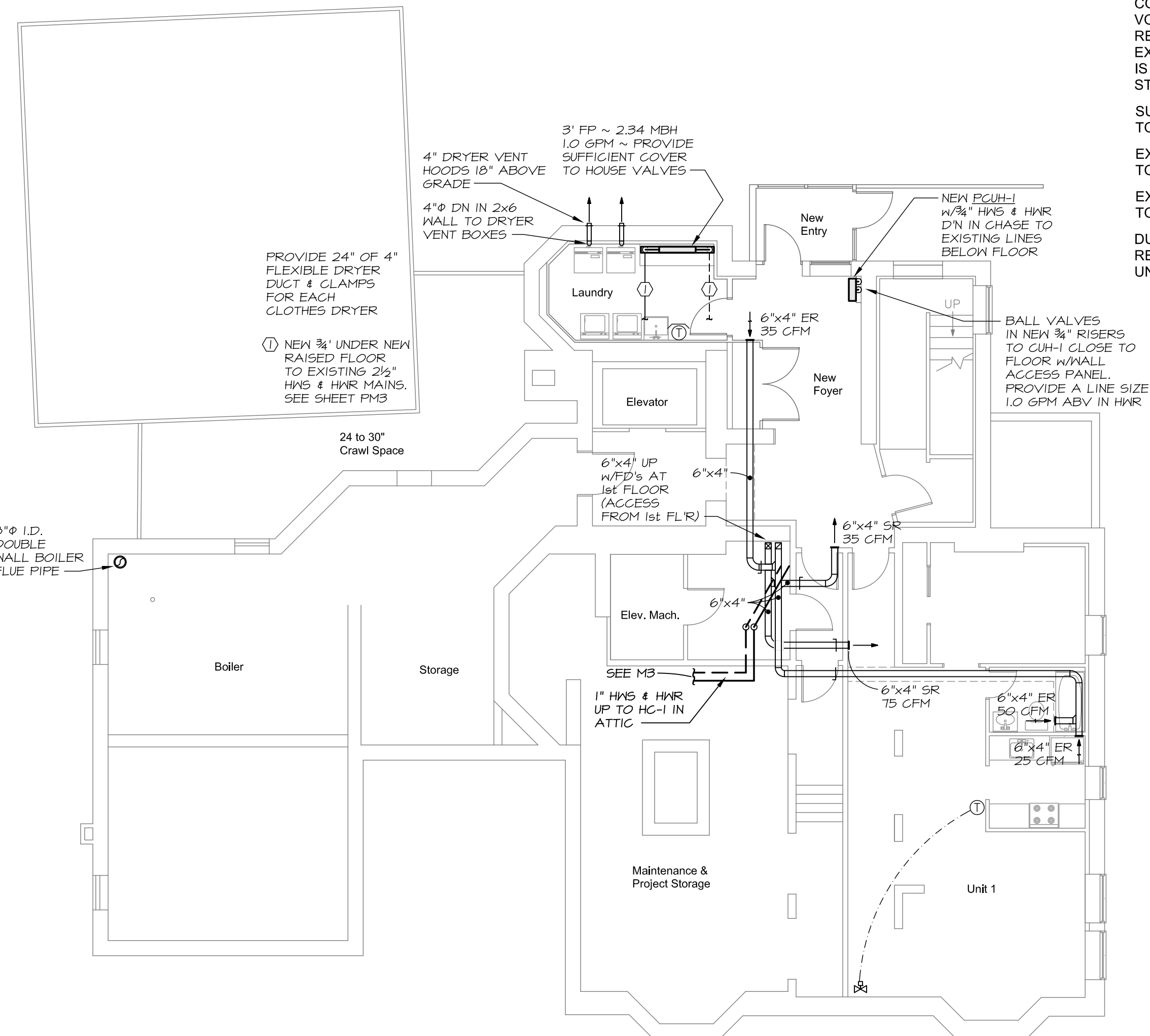
goduti/thomas architects

44 oak st.

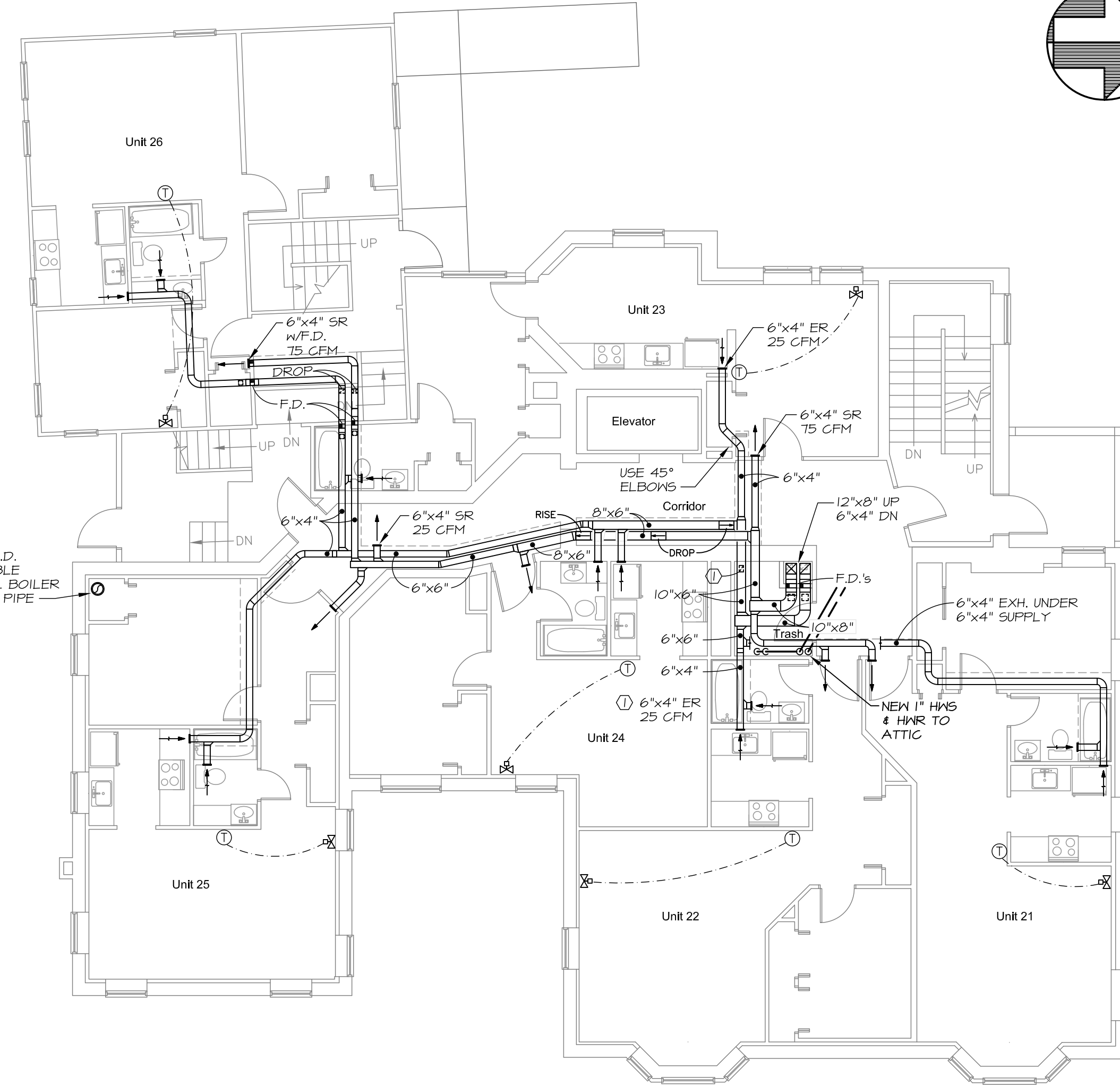
portland, maine 04101

ph. 207-775-3184

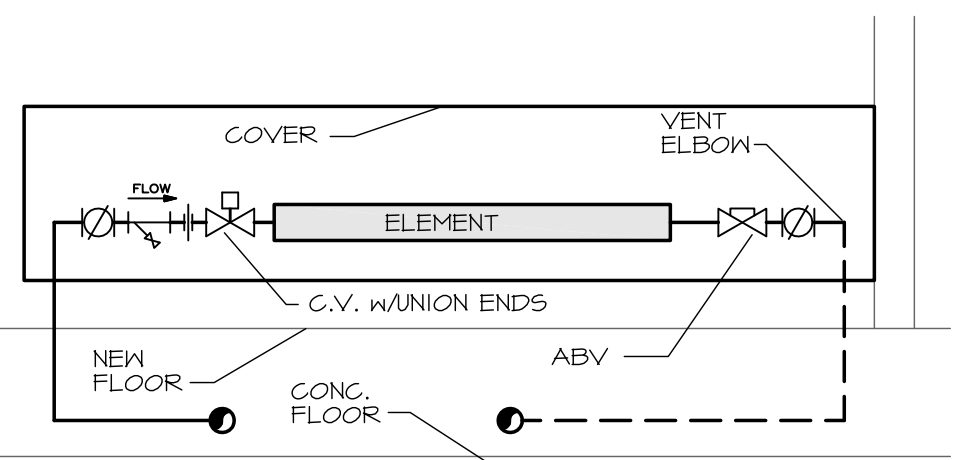
fax 207-774-0486



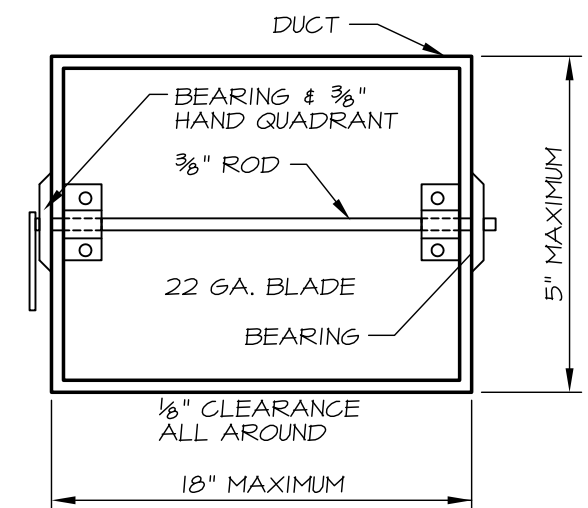
**1 FIRST FLOOR MECHANICAL PLAN**  
SCALE: 1/8" = 1'-0"



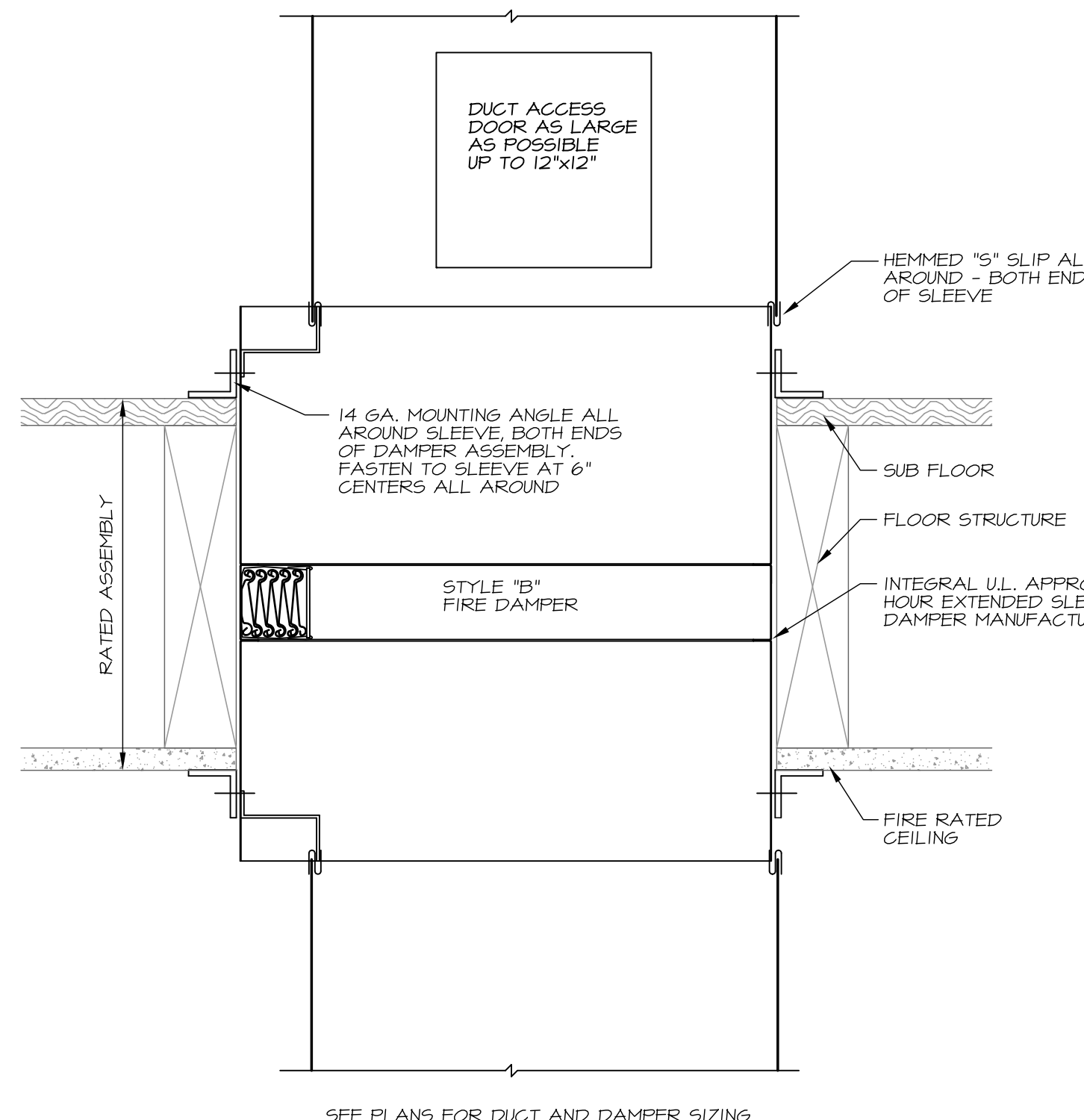
**2 SECOND FLOOR MECHANICAL PLAN**  
SCALE: 1/8" = 1'-0"



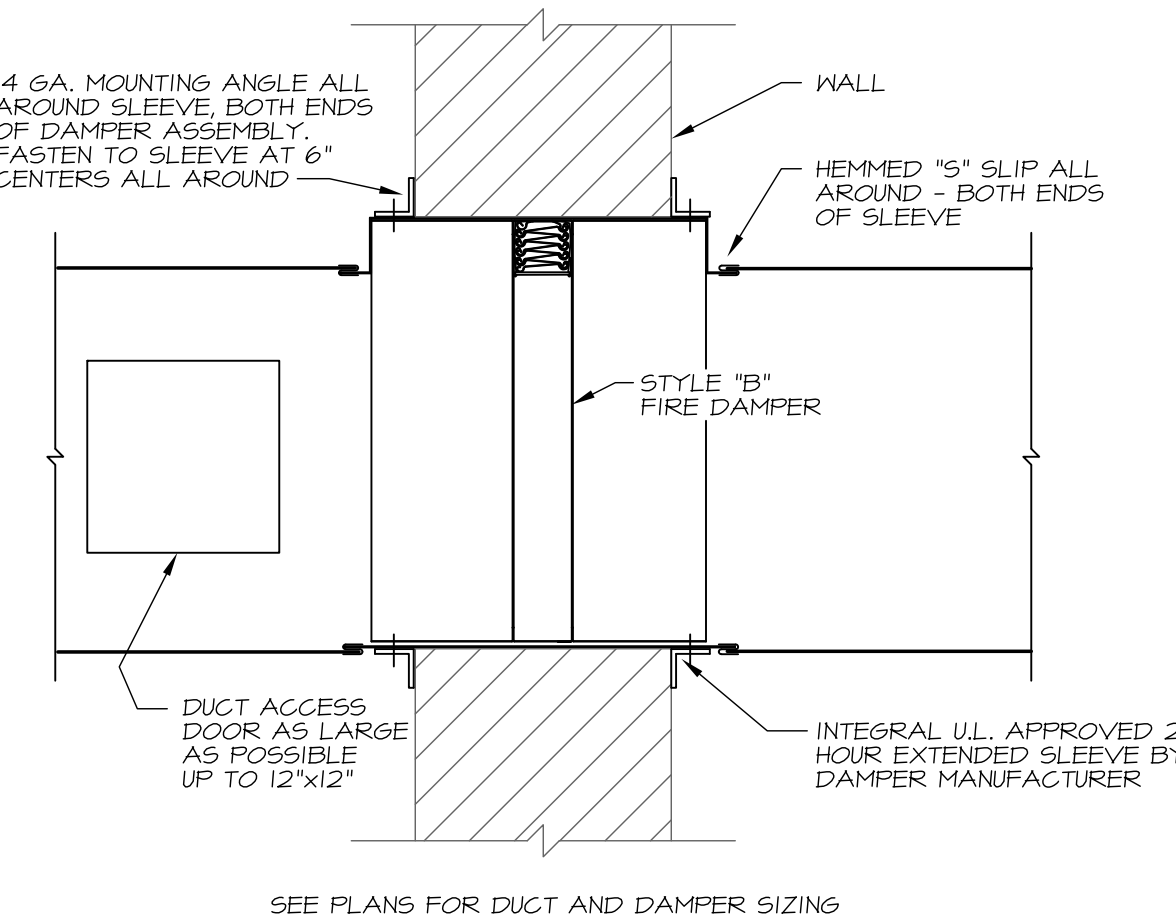
**3 UPFEED FINNED PIPE OPPOSITE END FEED**  
NO SCALE



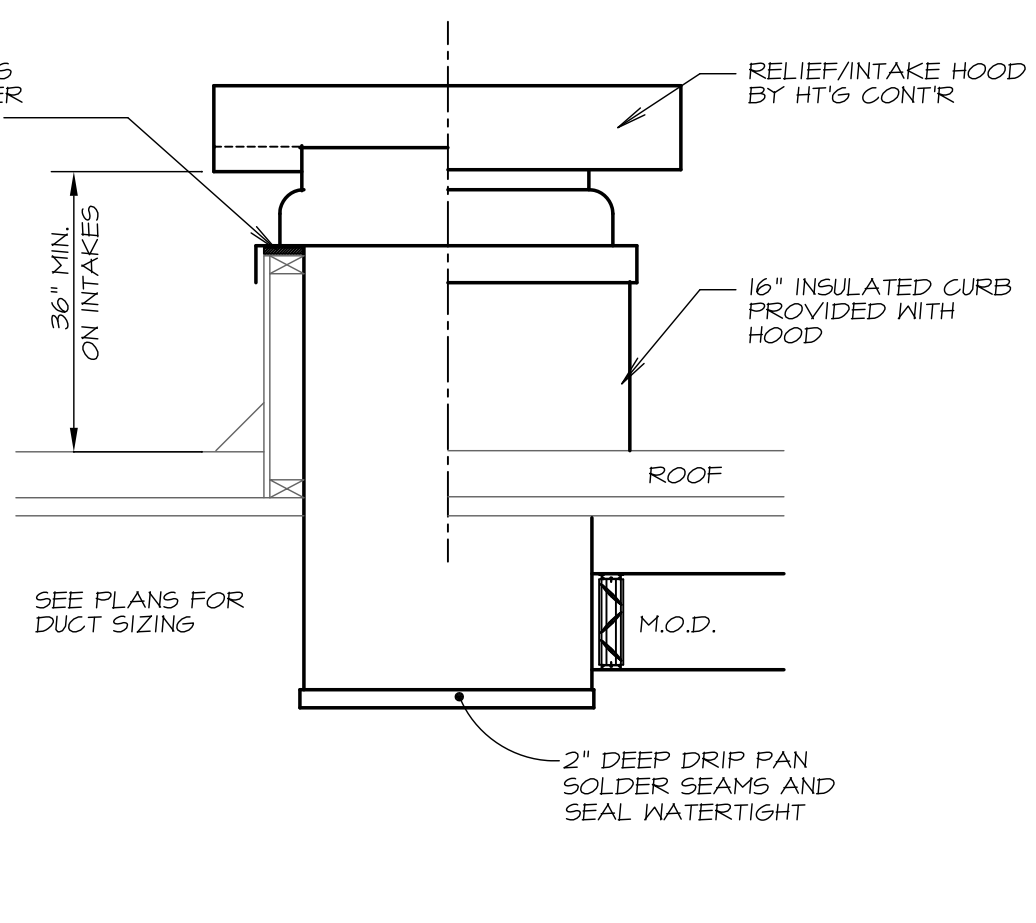
**7 SHOP FABRICATED MANUAL DAMPER**  
NO SCALE



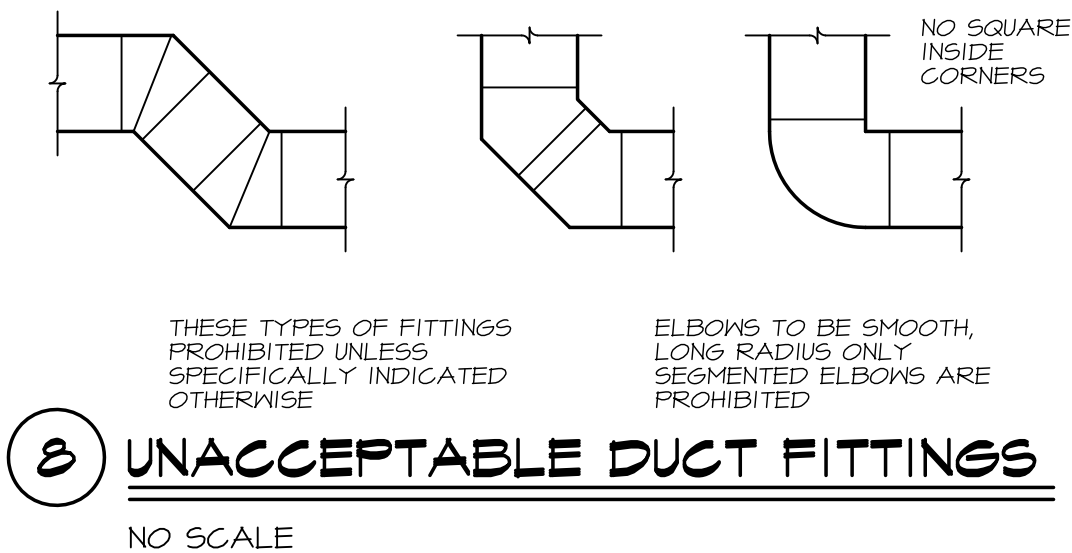
**4 FLOOR FIRE DAMPER STYLE "B"**  
NO SCALE



**5 WALL FIRE DAMPER STYLE "B"**  
NO SCALE



**6 RELIEF/INTAKE HOOD**  
NO SCALE



**8 UNACCEPTABLE DUCT FITTINGS**  
NO SCALE

**PERMIT SET**

revisions

date  
January 13, 2015

sheet title

payson

first and second floor  
mechanical plans

scale

1/8" = 1'-0"

drawn by  
R.E.M.

project number  
butpay

**PM1**



**MECHANICAL SYSTEMS ENGINEERS**  
ROYAL RIVER CENTER, UNIT 108  
10 FOREST FALLS DRIVE, YARMOUTH, MAINE 04096  
(207) 846-1441  
FACEBOOK: MECHANICAL SYSTEMS ENGINEERS  
© COPYRIGHT 2015



February 09, 2015 - 8:54 am  
\\MSEFFS1\shared\Projects\1434 Payson Building\Drawings\1434 PM1-PM2.dwg