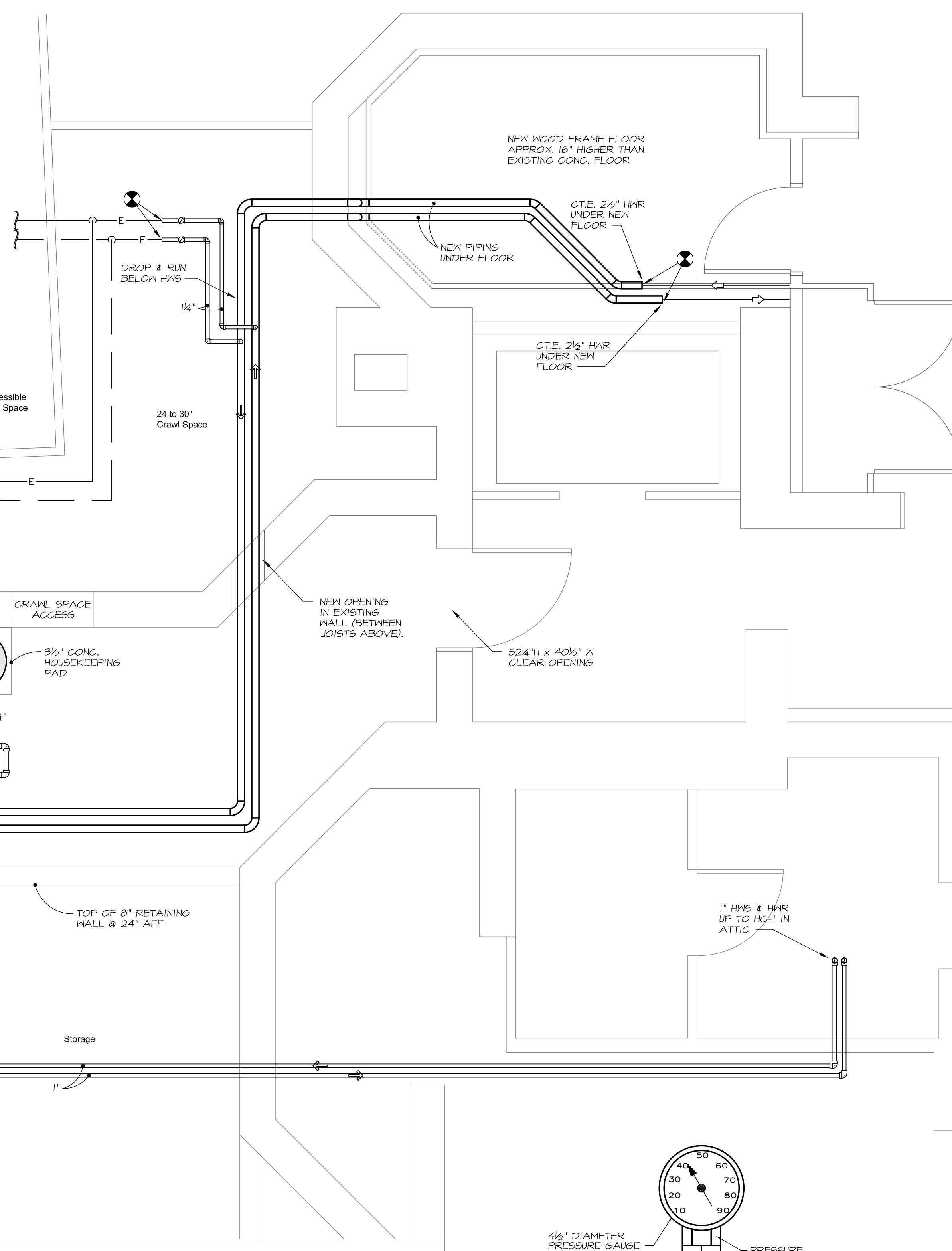
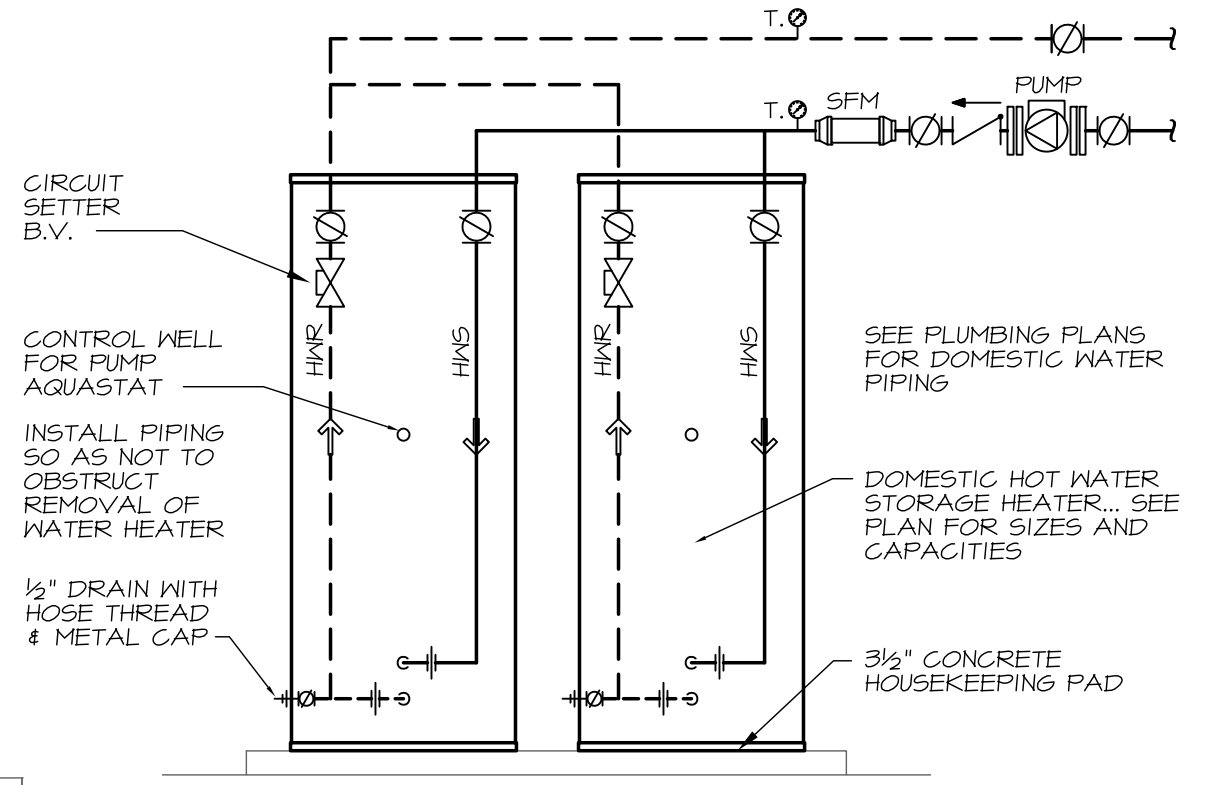


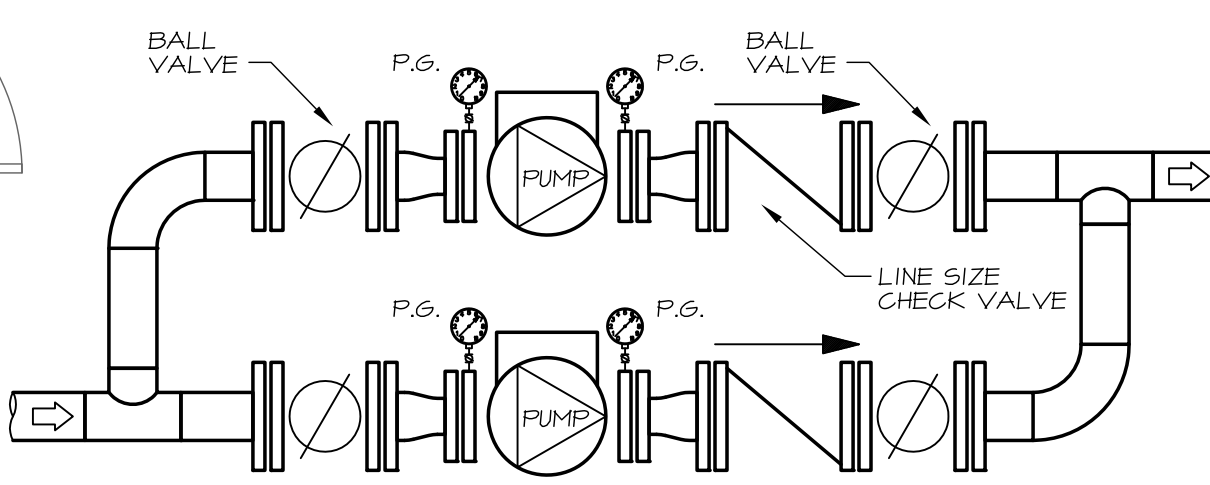
1 BOILER PIPING DIAGRAM
SCALE: 1/2" = 1'-0"



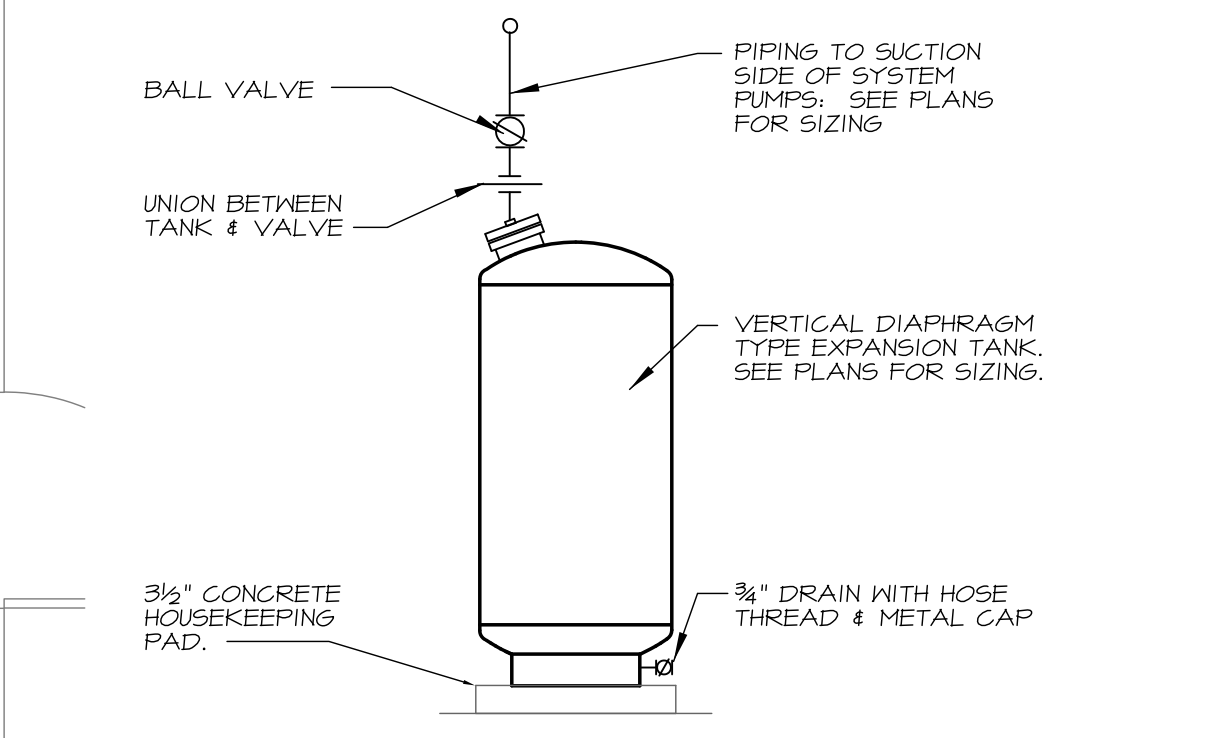
2 BOILER ROOM PLAN
SCALE: 3/8" = 1'-0"



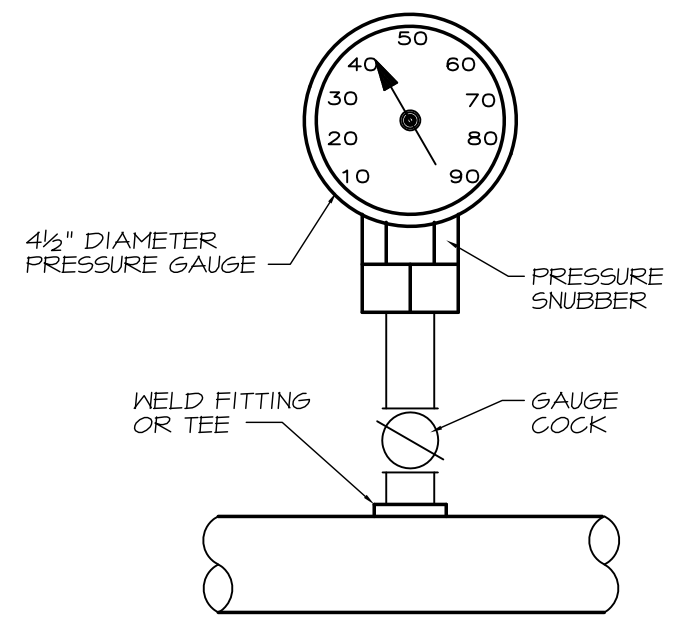
3 STORAGE WATER HEATER DETAIL
NO SCALE



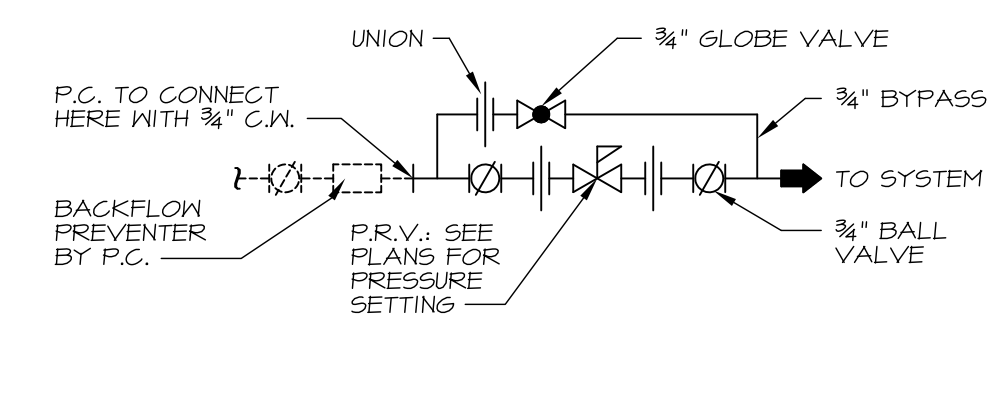
4 CIRCULATING PUMPS PIPING
NO SCALE



5 DIAPHRAGM TYPE EXPANSION TANK
NO SCALE



6 WATER PRESSURE GAUGE
NO SCALE



7 HEATING SYSTEM WATER MAKE-UP DETAIL
NO SCALE

- ① 2 1/2" HWS w/BALL VALVE & LWCO IN RISE
- ② 2 1/2" HWS w/BALL VALVE IN RISE
- ③ VERTICAL DIAPHRAGM EXPANSION TANK CHARGED TO 20 PSI. 34 GAL. TANK VOL. & 19 GAL. ACCEPTANCE VOLUME.
- ④ DIV. 22 TO CONNECT WITH 3/8" C.W.
- ⑤ 3/8" P.R.V. SET AT 20 PSI
- ⑥ BOILER SUPPORT PARTITION CONSISTING OF DOUBLE 2x6 STUDS (MIN) AT EACH SIDE OF BOILERS FIRMLY SECURED TO FLOOR AND OVERHEAD STRUCTURE.
- ⑦ NEW DOMESTIC WATER HEATERS 80 GALLON STORAGE EACH. HEAT 330 SPH (FIRST HOUR) FROM 50°F TO 140°F. BOILER WATER FLOWING AT 12.0 GPM. 9.10' HFD, 348 HEATING SURFACE AREA
- ⑧ CONTROL VALVE FOR HC-1 IN ATTIC TO BE SIZED BY A.T.C. CONTRACTOR. 1.0 GPM @ 3.0 PSI ΔP.
- ⑨ CONTROL WELL ~ EXACT LOCATION TO BE DETERMINED BY A.T.C. CONTRACTOR.
- ⑩ LOW LOSS HEADER PROVIDED W/BOILERS
- ⑪ 3" HWS & HWR HEADERS SUPPORTED FROM BOILER SUPPORT PARTITION.

8" Ø COMB. AIR INTO EXISTING UNUSED CHIMNEY. APPROX. 28' HIGH. CLEAN FLUE & PROVIDE INTAKE HOOD AT TOP W/THROAT FULL SIZE OF CHIMNEY FLUE (12"x12")

project name

Butler Payson
pine st.
state st.
portland, me

avesta housing

goduti/thomas architects

44 oak st.

portland, maine 04101

ph. 207-775-3184

fax 207-774-0486

PERMIT SET

revisions

date
January 13, 2015

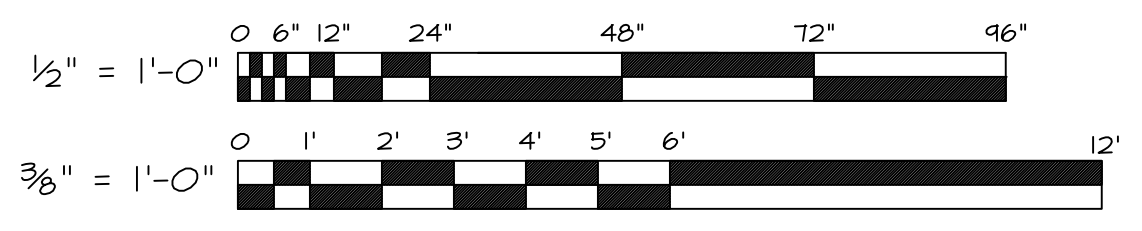
sheet title

payson
new boiler room
mechanical plan
and details

scale
Noted

drawn by
R.E.M.

project number
butpay



MECHANICAL SYSTEMS ENGINEERS
ROYAL RIVER CENTER, UNIT 108
10 FOREST FALLS DRIVE, YARMOUTH, MAINE 04096
(207) 846-1441
FACEBOOK: MECHANICAL SYSTEMS ENGINEERS
© COPYRIGHT 2015



PM3