

DIRECTORY	KVA LOAD			CKT #	BRK AMPS	PHASE	BRK AMPS	CKT #	KVA LOAD			DIRECTORY
	A	B	C						A	B	C	
UNIT 1	*			1	100	A	100	2	*			UNIT 32
		*		3		B		4		*		
UNIT 21	*		*	5	100	C	100	6			*	UNIT 33
				7		A		8	*			
UNIT 22		*		9	100	B	100	10		*		UNIT 34
			*	11		C		12			*	
UNIT 23	*			13	100	A	100	14	*			UNIT 35
		*		15		B		16		*		
UNIT 24			*	17	100	C	100	18		*		UNIT 36
	*			19		A		20	*			
UNIT 25		*		21	100	B	100	22		*		UNIT 41
			*	23		C		24		*		
UNIT 26	*		*	25	100	A	100	26	*			UNIT 42
		*		27		B		28		*		
UNIT 31			*	29	100	C	100	30		*		UNIT 43
	*			31		A		32	*			
SPACE		*		33	100	B	100	34	*	*		UNIT 44
SPACE			*	35		C		36		*		
SPACE	*			37		A		38	*			SPACE
SPACE		*		39		B		40	*	*		SPACE
SPACE			*	41		C		42		*	*	SPACE
SUBTOTAL	###	###	###					###	###	###		SUBTOTAL
VOLTAGE: 208Y/120V PHASE: 3 POLES: 4				TOTAL KVA A-PHASE				###	PANEL		MDP	
MAIN BREAKER: 400A BUS AMPS: 400A				TOTAL KVA B-PHASE				###	LOCATION		LAUNDRY ROOM	
MOUNTING: SURFACE				TOTAL KVA C-PHASE				###				
SHORT CIRCUIT RATING: *KAIC				TOTAL KVA				###				
NOTES:												

DIRECTORY	KVA LOAD			CKT #	BRK AMPS	PHASE	BRK AMPS	CKT #	KVA LOAD			DIRECTORY
	A	B	C						A	B	C	
BOILER B-1	*			1	20	A	30	2	2.5			DRYER
BOILER B-2		*		3	20	B		4		2.5		
P-1			*	5	20	C	30	6			2.5	DRYER
P-2	*			7	20	A		8	2.5			
P-3		*		9	20	B	20	10		1.2		WASHER
P-4			*	11	20	C	20	12			1.2	WASHER
P-5	*			13	20	A	20	14	0.8			ENTRY/LAUNDRY/BOILER LTS.
P-6		*		15	20	B	20	16		0.1		EXTERIOR LIGHT
UH-1 & UH-2			0.2	17	20	C	20	18			0.2	LAUNDRY RECEPTACLE
SPARE	*			19	20	A	20	20	*			SPARE
SPARE		*		21	20	B	20	22		*		SPARE
SPARE			*	23	20	C	20	24		*		SPARE
SPARE	*			25	20	A	20	26	*			SPARE
SPARE		*		27	20	B	20	28	*	*		SPARE
SPARE			*	29	20	C	20	30		*		SPARE
SPARE	*			31	20	A	20	32	*			SPARE
SPARE		*		33	20	B	20	34	*	*		SPARE
SPARE	*		*	35	20	C	20	36	*	*		SPARE
SPARE		*		37	20	A	20	38	*	*		SPARE
SPARE			*	39	20	B	70	40		*		ELEVATOR (EXISTING)
SPARE		*		41	20	C		42		*	*	
SUBTOTAL	###	###	###					###	###	###		SUBTOTAL
VOLTAGE: 208Y/120V PHASE: 3 POLES: 4				TOTAL KVA A-PHASE				###	PANEL		PPH	
MAIN BREAKER: 200A BUS AMPS: 200A				TOTAL KVA B-PHASE				###	LOCATION		LAUNDRY ROOM	
MOUNTING: SURFACE				TOTAL KVA C-PHASE				###				
SHORT CIRCUIT RATING: *KAIC				TOTAL KVA				###				
NOTES: 1. INTENT IS TO RECONNECT EXISTING CIRCUITS FROM HOUSE PANEL BEING DEMOLISHED TO CIRCUITS LABELED AS SPARE IN THIS PANEL. RELABEL PANEL SCHEDULE ON AS-BUILT DRAWING TO REFLECT THESE CIRCUITS.												

1 ELECTRIC PANEL SCHEDULES
NOT TO SCALE

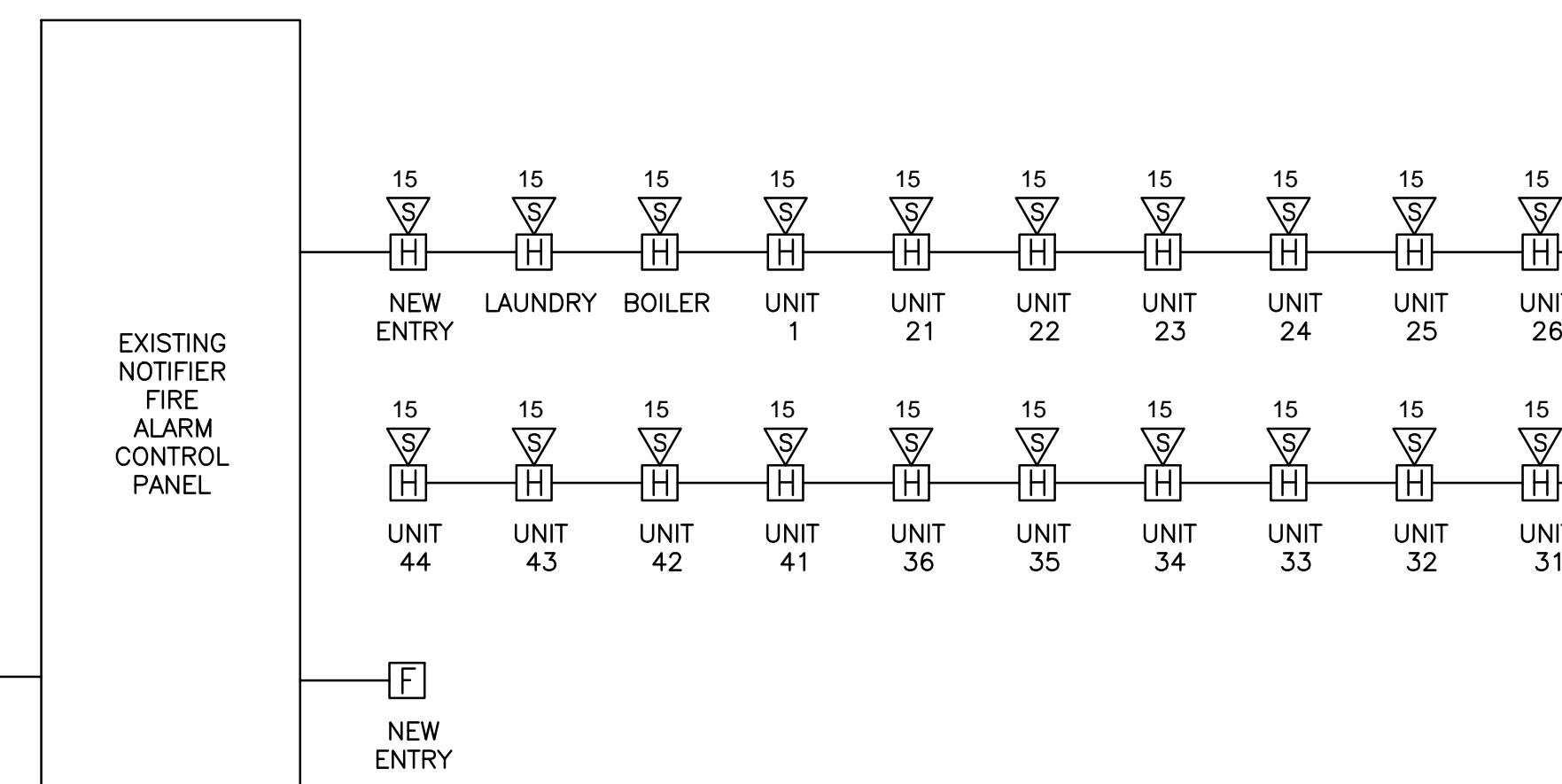
LIGHTING SCHEDULE					
TYPE	DESCRIPTION	MANUFACTURER	LAMPS	MOUNTING	NOTES
A	16" SURFACE MOUNTED LED FIXTURE BRUSHED NICKEL FINISH ENERGY STAR RATED 120V	BROWNLEE LIGHTING	24W - LED 3000K 4028 LUMENS	CEILING SURFACE	MODEL #: 2062-16-BN-C24LED-30K-ES
B	24" SURFACE MOUNTED LED FIXTURE BRUSHED NICKEL FINISH ENERGY STAR RATED 120V	BROWNLEE LIGHTING	37W - LED 3000K 4702 LUMENS	CEILING SURFACE	MODEL #: 2062-24-BN-C37LED-30K-ES
C	26" VANITY LED FIXTURE NICKEL TO NE FINISH 120V	BROWNLEE LIGHTING	20W - LED 3000K 2111 LUMENS	WALL SURFACE	MODEL #: 5450-26-NT-E20LED-30K-ES
D	11" TALL ADA LED WALL SCONCE ENERGY STAR RATED 120V	BROWNLEE LIGHTING	12W - LED 4000K 1275 LUMENS	WALL SURFACE	MODEL #: 1540-BIZLED-40K-ES
E	4' LOW PROFILE LED WRAP FIXTURE DLC LISTED 120V	COLUMBIA LIGHTING	51W - LED 4000K 4400 LUMENS	CEILING SURFACE OR HUNG	MODEL #: LAW4-40ML-EU
F	6" LED OPEN DOWNLIGHT ENERGY STAR RATED 120V	PRESCOLITE	22W - LED 4000K 1500 LUMENS	CEILING RECESSED	MODEL #: HOUSING: LF6LEDG4 TRIM: 6LFLED6G440KWT
G	COMPACT LED FULL CUTOFF WALL PACK BRONZE FINISH 120V	HUBBELL OUTDOOR LIGHTING	17W - LED 4000K 1389 LUMENS	WALL SURFACE	MODEL #: LNC-7LU-4K-3-1
H	SMALL FULL CUTOFF POLE MOUNTED LED LIGHT AND 10' SQUARE STRIAIGHT POLE, DARK BRONZE FINISH. 120V	RAB LIGHTING	13W - LED 5000K 1064 LUMENS	10' POLE	MODEL #: ALED13
C	CEILING MOUNTED DUAL TECHNOLOGY ULTRASONIC AND PASSIVE INFRARED OCCUPANCY SENSOR 120V	HUBBELL	N/A	CEILING SURFACE	MODEL #: OMNIDT500 FURNISH RELAYS/POWER PACKS AS REQUIRED FOR A COMPLETE AND OPERABLE INSTALLATION
W	WALL MOUNT PASSIVE INFRARED OCCUPANCY SENSOR 120V	HUBBELL	N/A	WALL	MODEL #: LHIRS11
	EMERGENCY BATTERY UNIT 120V	DUAL-LITE	(2) 10 WATT HALOGEN	WALL SURFACE	MODEL #: LZ2N
WP	WEATHER PROOF REMOTE HEAD 120V	DUAL-LITE	(1) 10 WATT HALOGEN	WALL SURFACE	MODEL #: LZRSW0610
	LED EXIT SIGN EMERGENCY BATTERY UNIT COMBINATION 120V	DUAL-LITE	(2) 5 WATT HALOGEN	CEILING SURFACE	MODEL #: LTURW3

2 LIGHTING SCHEDULE
NOT TO SCALE

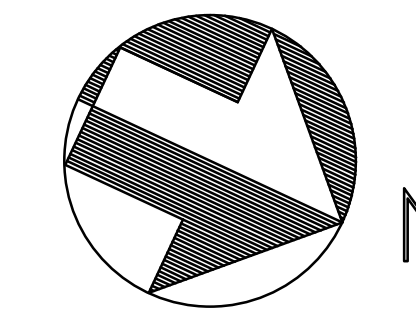
FIRE ALARM RISER NOTES:

- CONTRACTOR TO FURNISH AES WIRELESS TRANSMITTER MODEL 7788, 12V/7AH STANDBY BATTERY, 1640 PLUG-IN TRANSFORMER, SENTROL TAMPER SWITCH TO ALLOW SERVICING WITHOUT SENDING SYSTEM INTO ALARM. SYSTEM SHALL BE TO CITY OF PORTLAND STANDARD AND COORDINATE WITH PORTLAND FIRE DEPARTMENT.
- CONTRACTOR SHALL FURNISH NEW DEVICES ON EXISTING ADDRESSABLE ZONE CIRCUITS. FURNISH NEW POWER (NAC) UNITS AS REQUIRED TO ACCOMODATE NEW AND EXISTING DEVICES.

WIRELESS TRANSMITTER (SEE NOTE 1)



3 FIRE ALARM RISER DIAGRAM (PARTIAL)
NOT TO SCALE



project name

Butler Payson
pine st.
state st.
portland, me

avesta housing

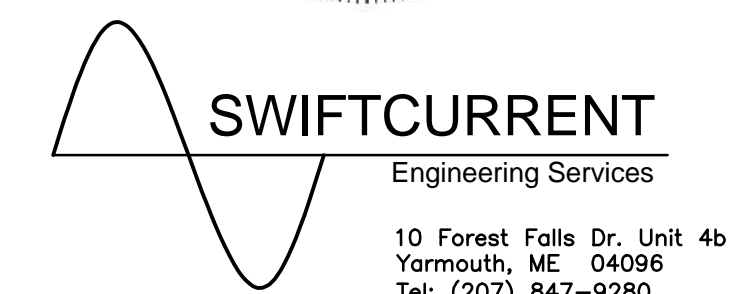
goduti/thomas architects

44 oak st.

portland, maine 04101

ph. 207-775-3184

fax 207-774-0486



ISSUED FOR PERMIT

revisions

date

Feb. 6, 2015

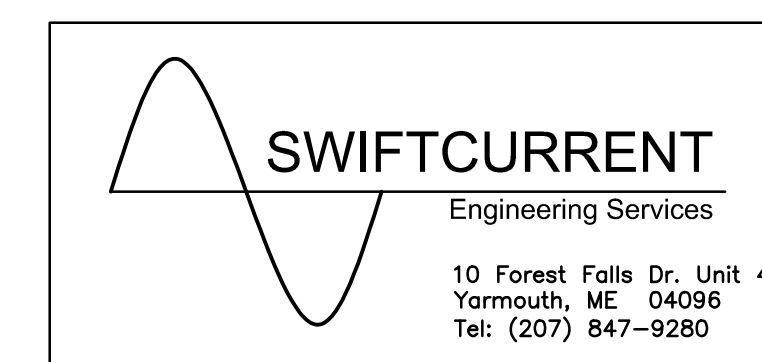
sheet title

ELECTRICAL PANEL SCHEDULES & LIGHTING SCHEDULE

scale: as shown

drawn by:JMD checked by:TDM

project number



PE1.3