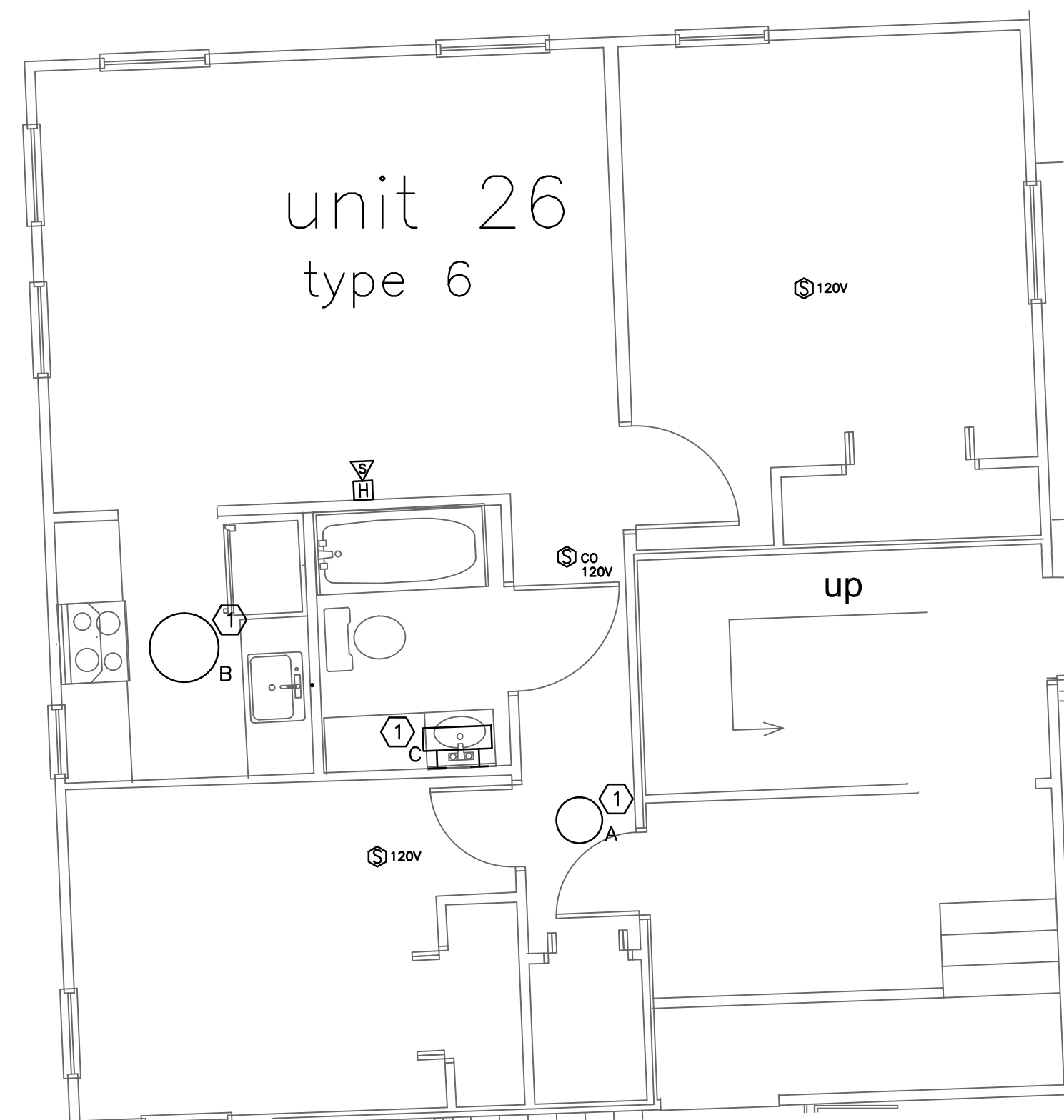
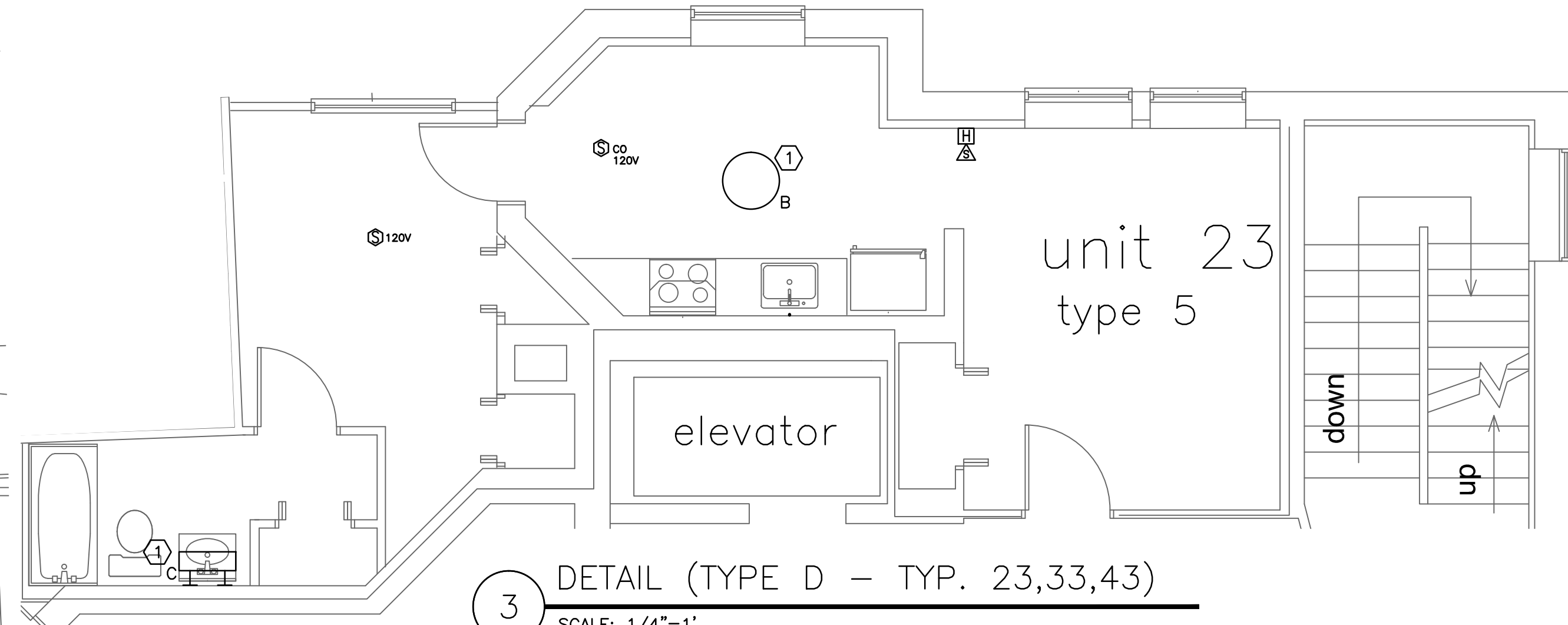


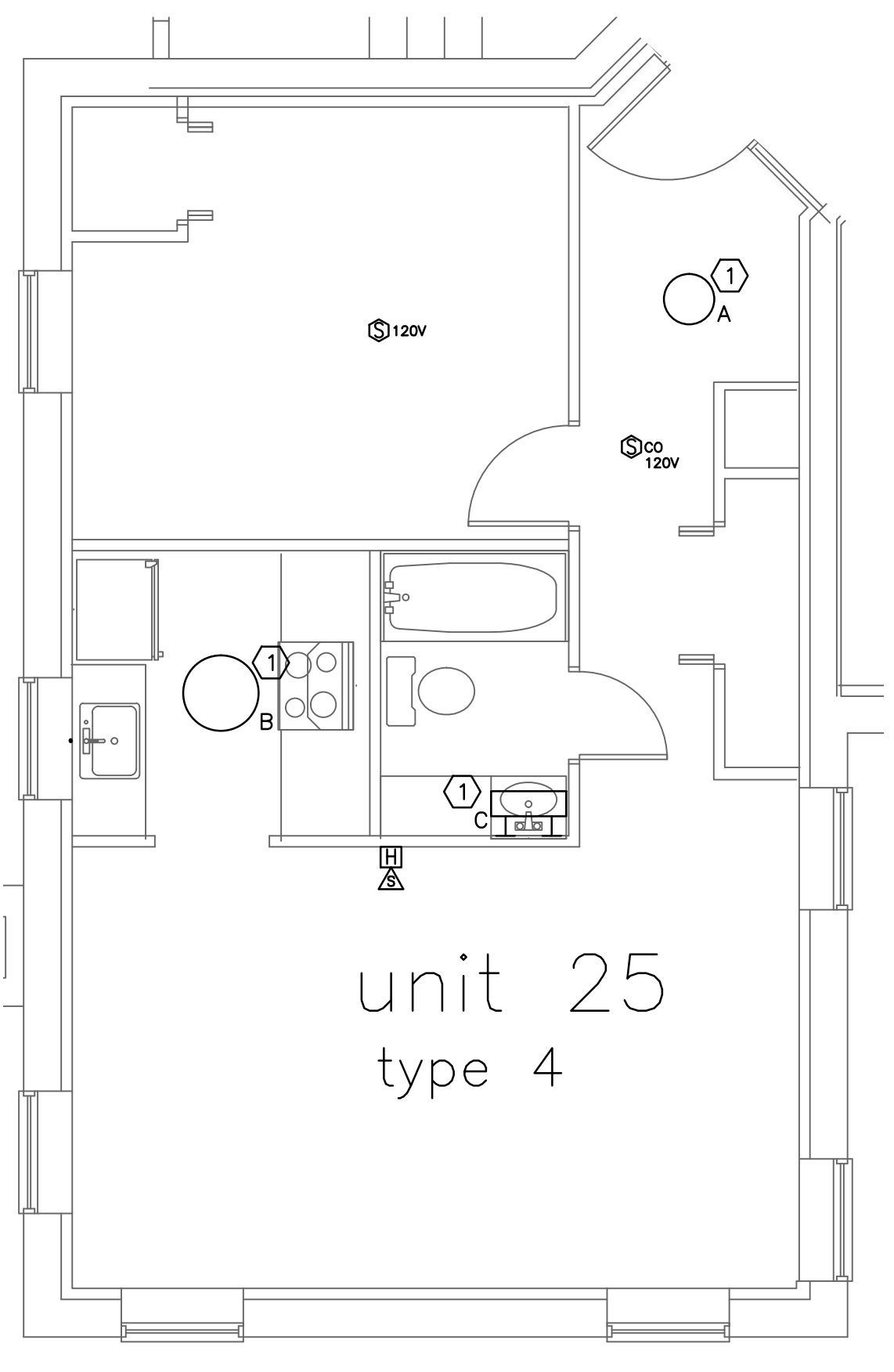
1 DETAIL (TYPE A)
SCALE: 1/4"=1'



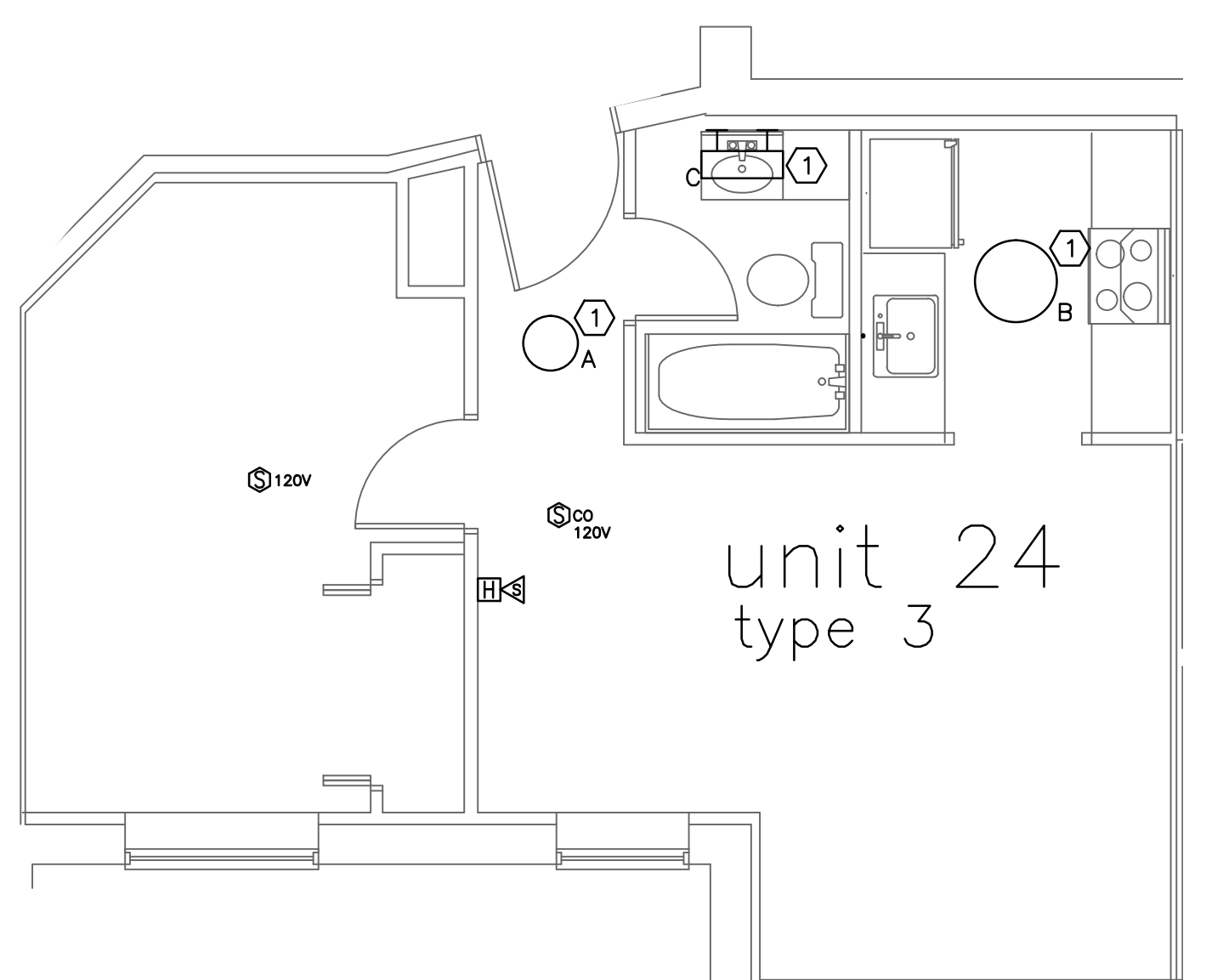
2 DETAIL (TYPE G - TYP. 26,36)
SCALE: 1/4"=1'



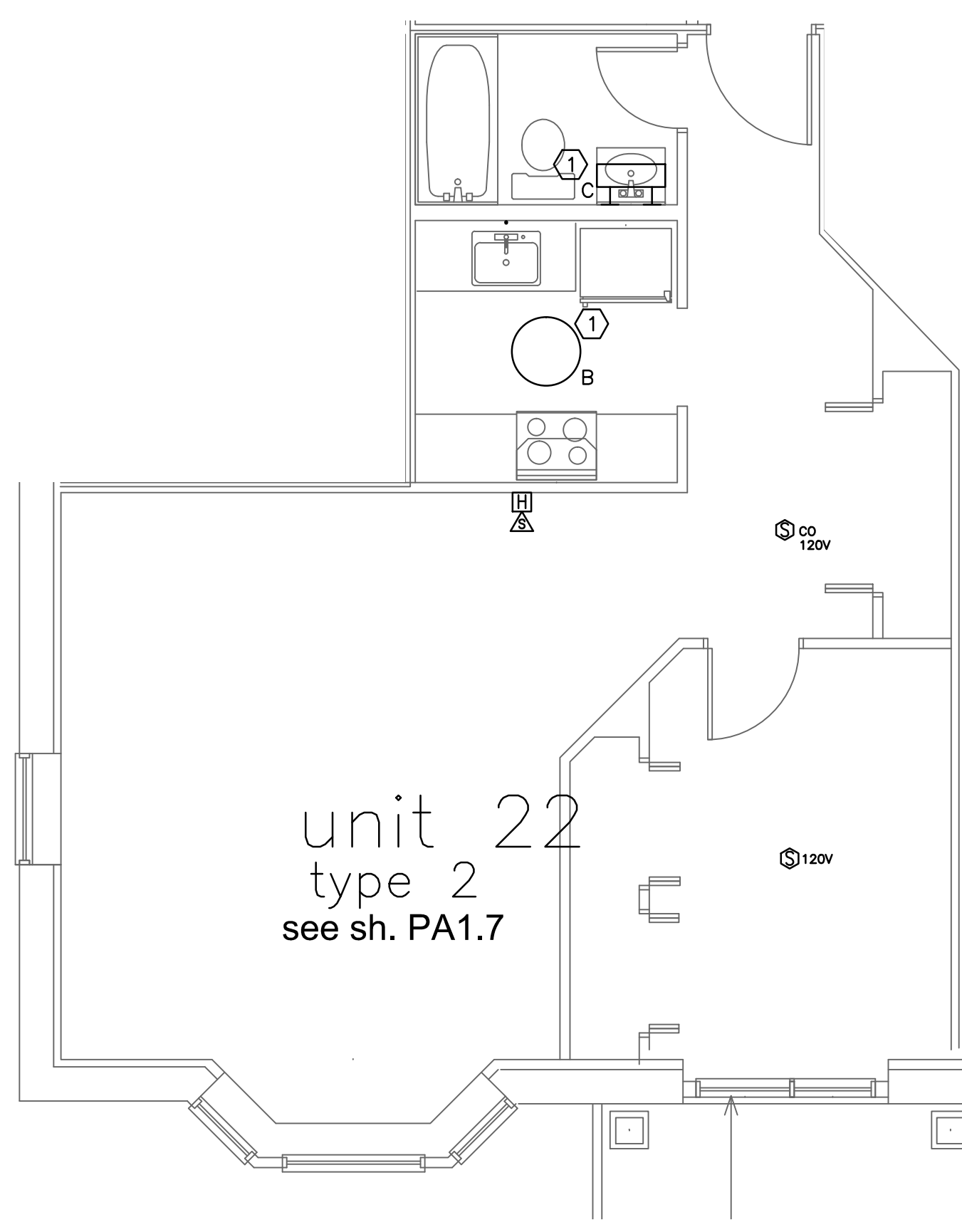
3 DETAIL (TYPE D - TYP. 23,33,43)
SCALE: 1/4"=1'



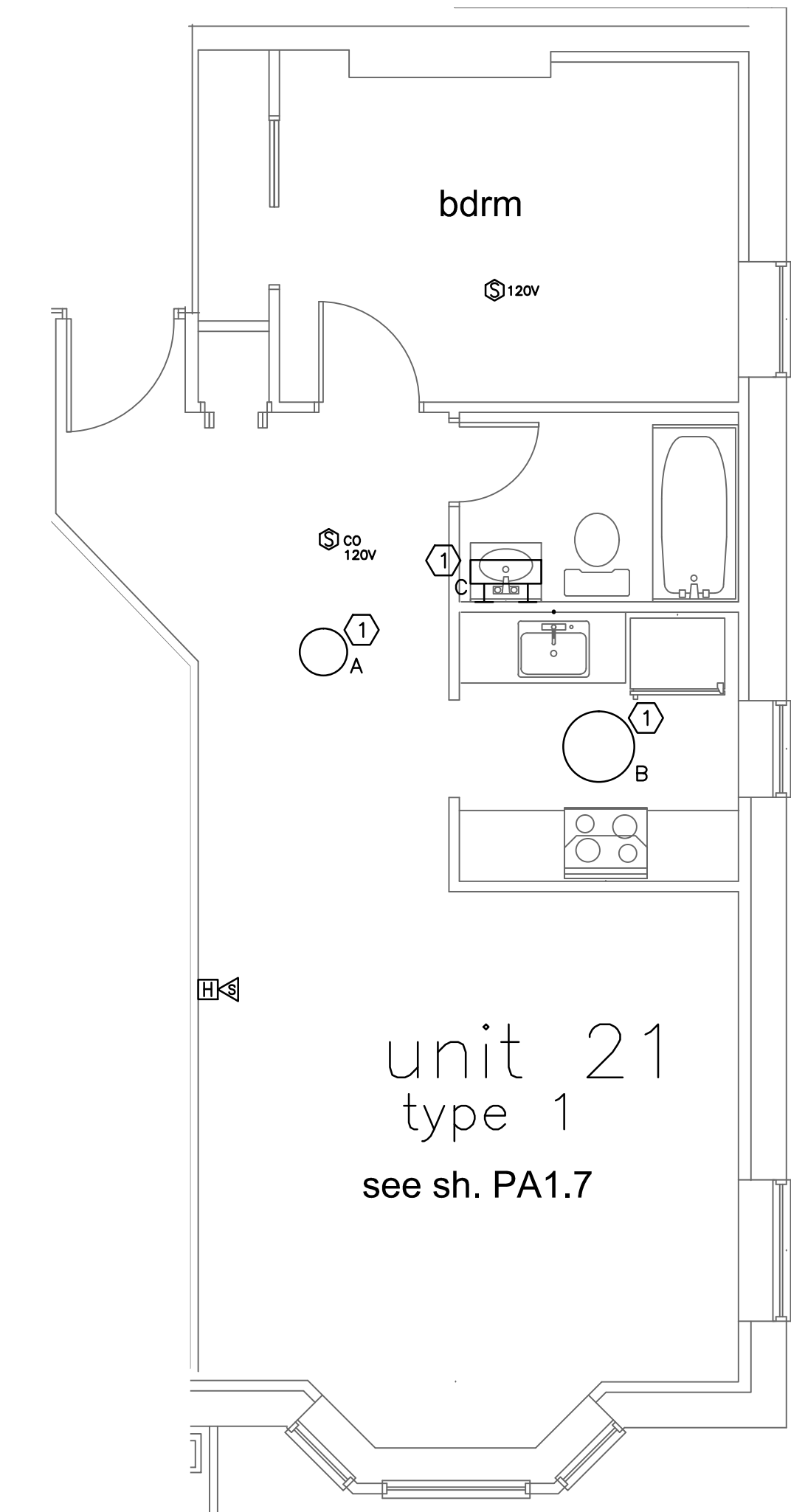
4 DETAIL (TYPE F - TYP. 25,35)
SCALE: 1/4"=1'



5 DETAIL (TYP. UNIT-24,34,44)
SCALE: 1/4"=1'



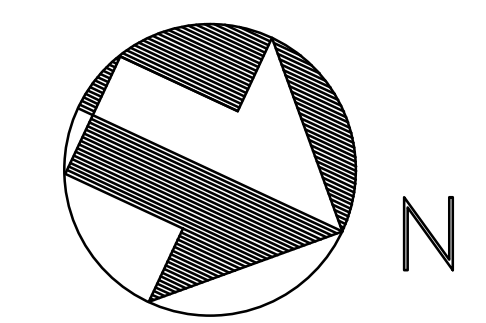
6 DETAIL - TYPE C(TYP. UNIT-22,32,42)
SCALE: 1/4"=1'



7 DETAIL -TYPE B(TYP. UNIT-21,31,41)
SCALE: 1/4"=1'

NOTES:
 1. SEE E0.0 FOR LEGEND, ABBREVIATIONS AND GENERAL NOTES.
 2. IN THE APARTMENT UNITS ANY NEW CIRCUITS OR CIRCUITS WHERE RECEPTACLES OR LIGHTS ARE ADDED WILL BE REQUIRED TO BE UPGRADED TO ARC-FAULT TYPE.

KEYED NOTES:
 ① REPLACE EXISTING FIXTURE, REUSE EXISTING CIRCUIT WIRING AND SWITCHING.
 ② NEW CEILING FIXTURE TO REPLACE WALL FIXTURE.



project name

Butler Payson
 pine st.
 state st.
 portland, me

avesta housing

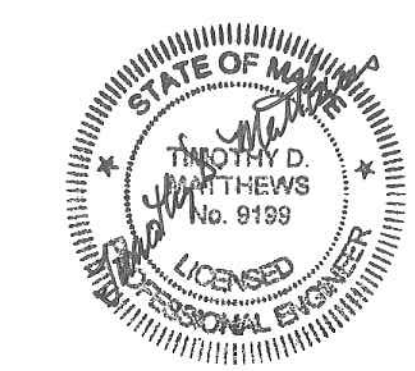
goduti/thomas architects

44 oak st.

portland, maine 04101

ph. 207-775-3184

fax 207-774-0486



SWIFTCURRENT
 Engineering Services
 10 Forest Falls Dr. Unit 4b
 Yarmouth, ME 04096
 Tel: (207) 847-9280

ISSUED FOR PERMIT

revisions

date
 Feb. 6, 2015

sheet title

ELECTRICAL POWER & SYSTEMS
 - UNIT DETAILS

scale: as shown

drawn by:JMD checked by:TDM

project number

PE1.2