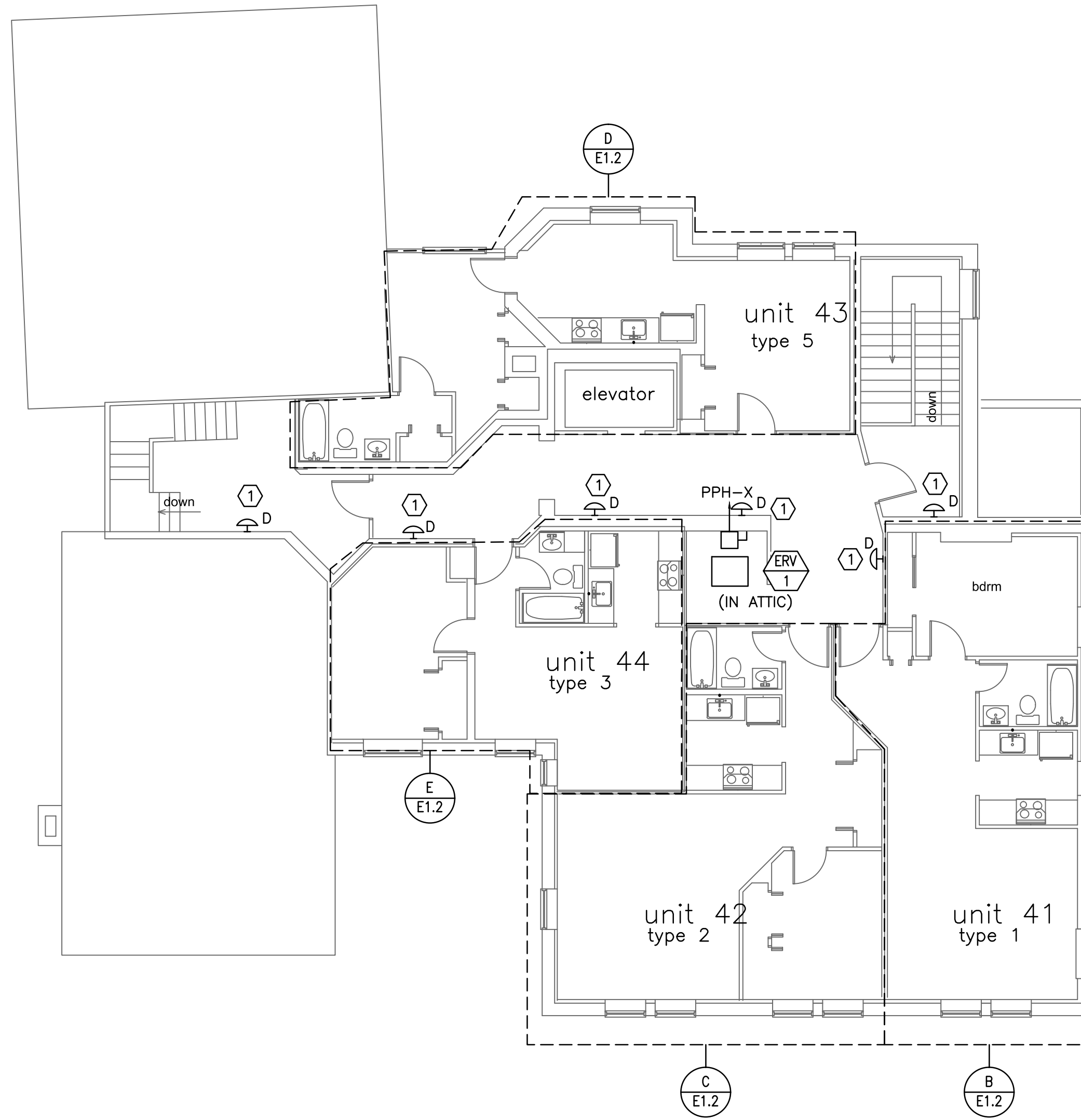


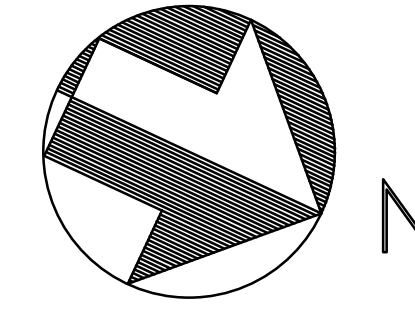
1 ELECTRICAL POWER & SYSTEMS PLAN THIRD FLOOR - EXIST.  
SCALE: 1/8"=1'



2 ELECTRICAL POWER & SYSTEMS PLAN FOURTH FLOOR - EXIST.  
SCALE: 1/8"=1'

KEYED NOTES:

1 REPLACE EXISTING LIGHT REWIRE TO EXISTING CIRCUIT AND CONTROLS.



project name

**Butler Payson**  
pine st.  
state st.  
portland, me

avesta housing

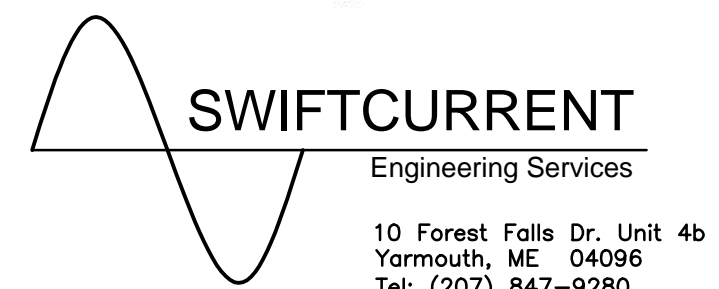
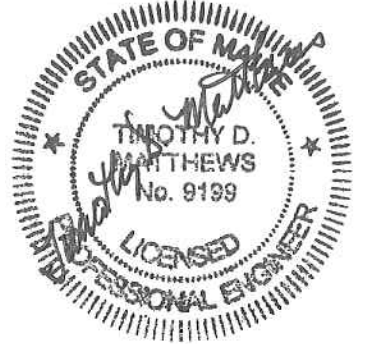
goduti/thomas architects

44 oak st.

portland, maine 04101

ph. 207-775-3184

fax 207-774-0486



ISSUED FOR PERMIT

revisions

date  
Feb. 6, 2015

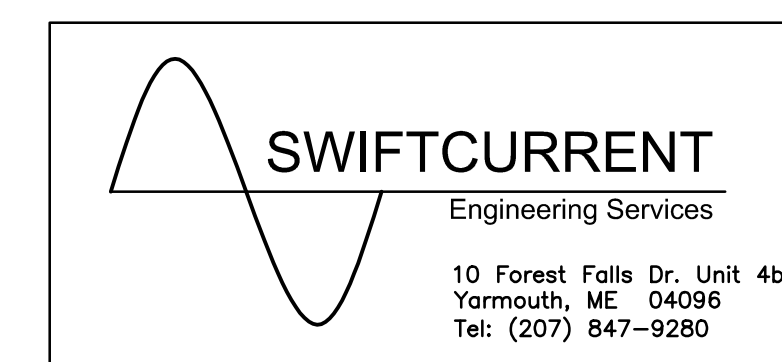
sheet title

ELECTRICAL POWER & SYSTEM PLAN  
- EXIST. THIRD & FOURTH FLOOR

scale: as shown

drawn by:JMD checked by:TDM

project number



PE1.1