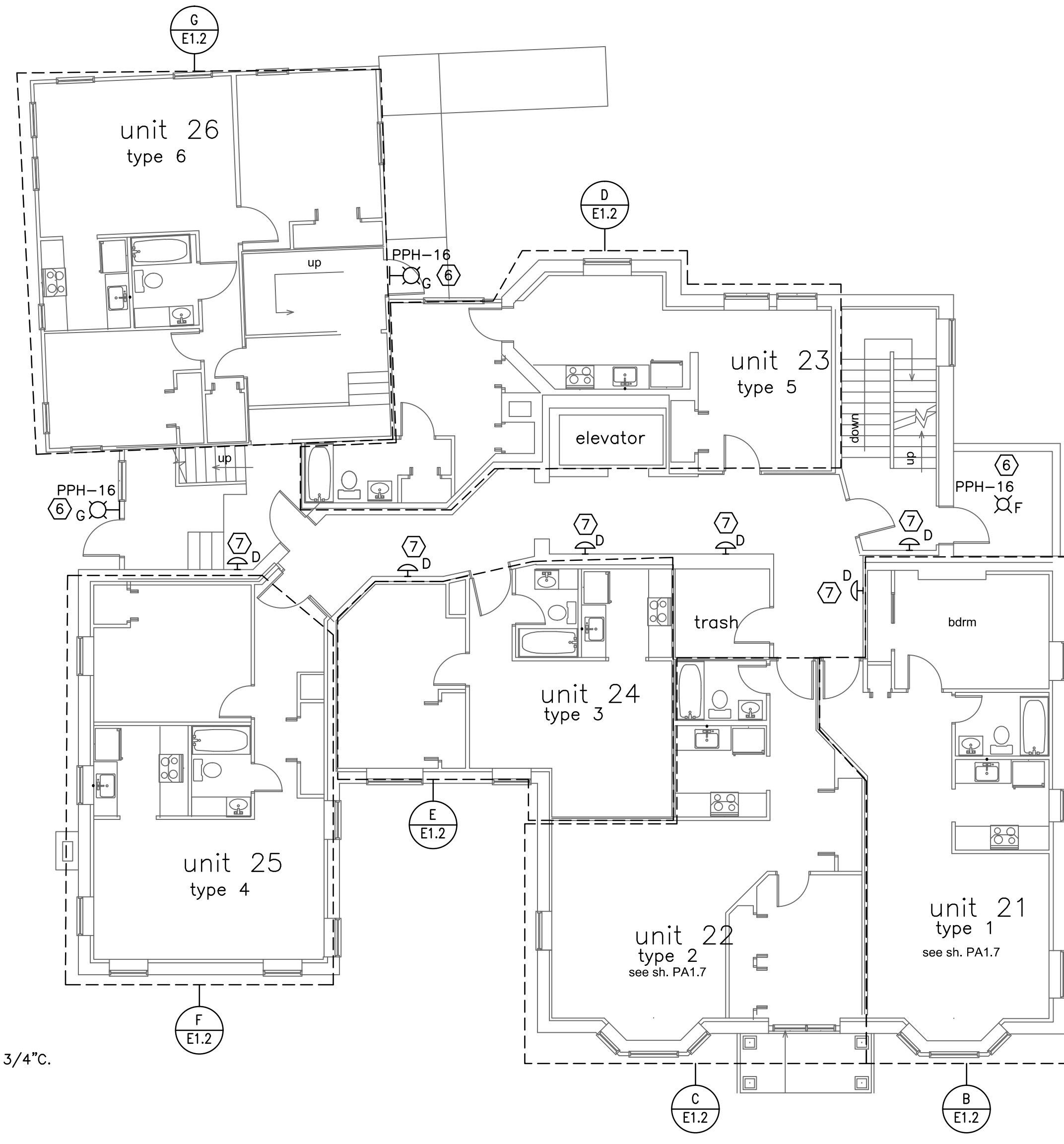
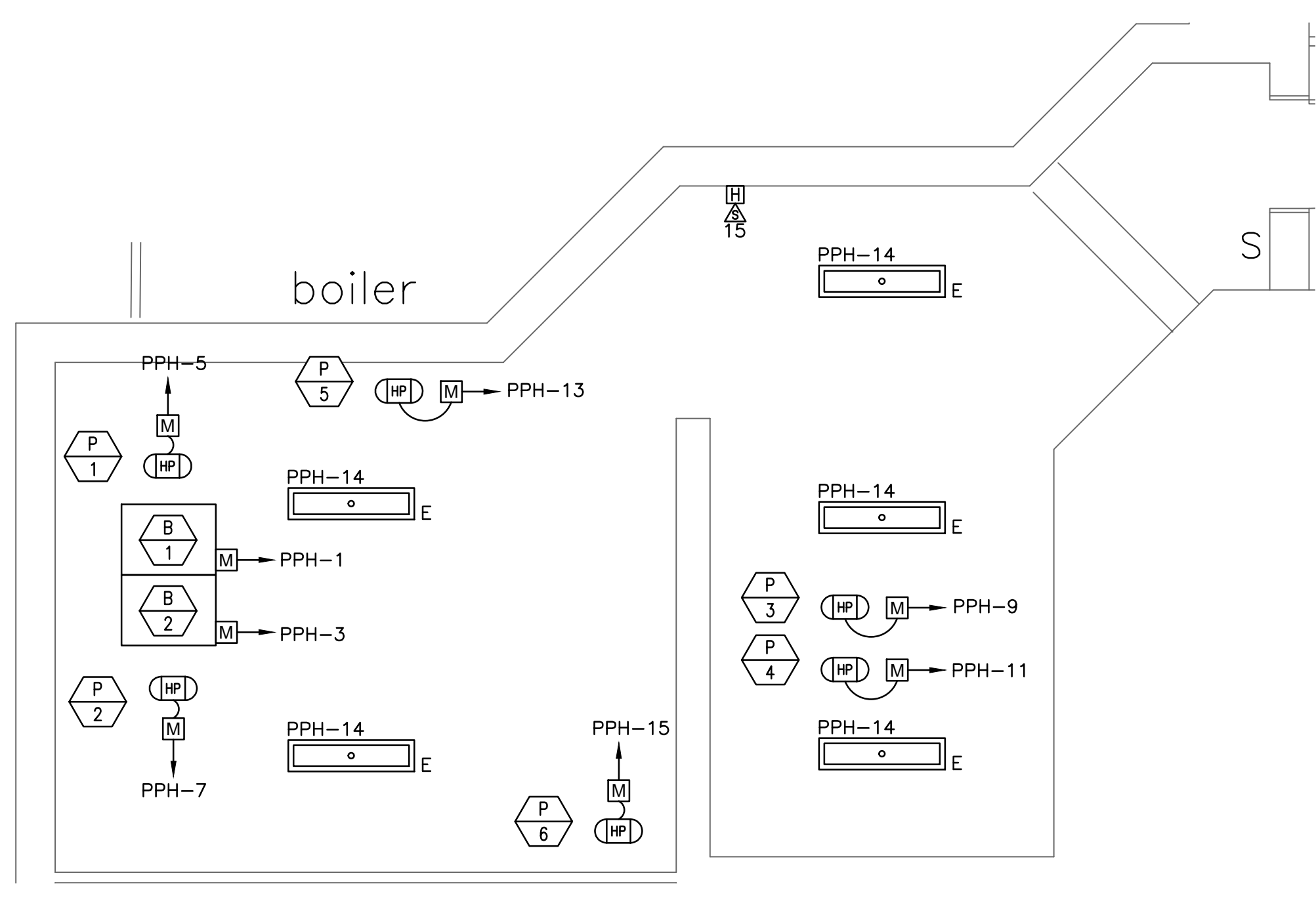


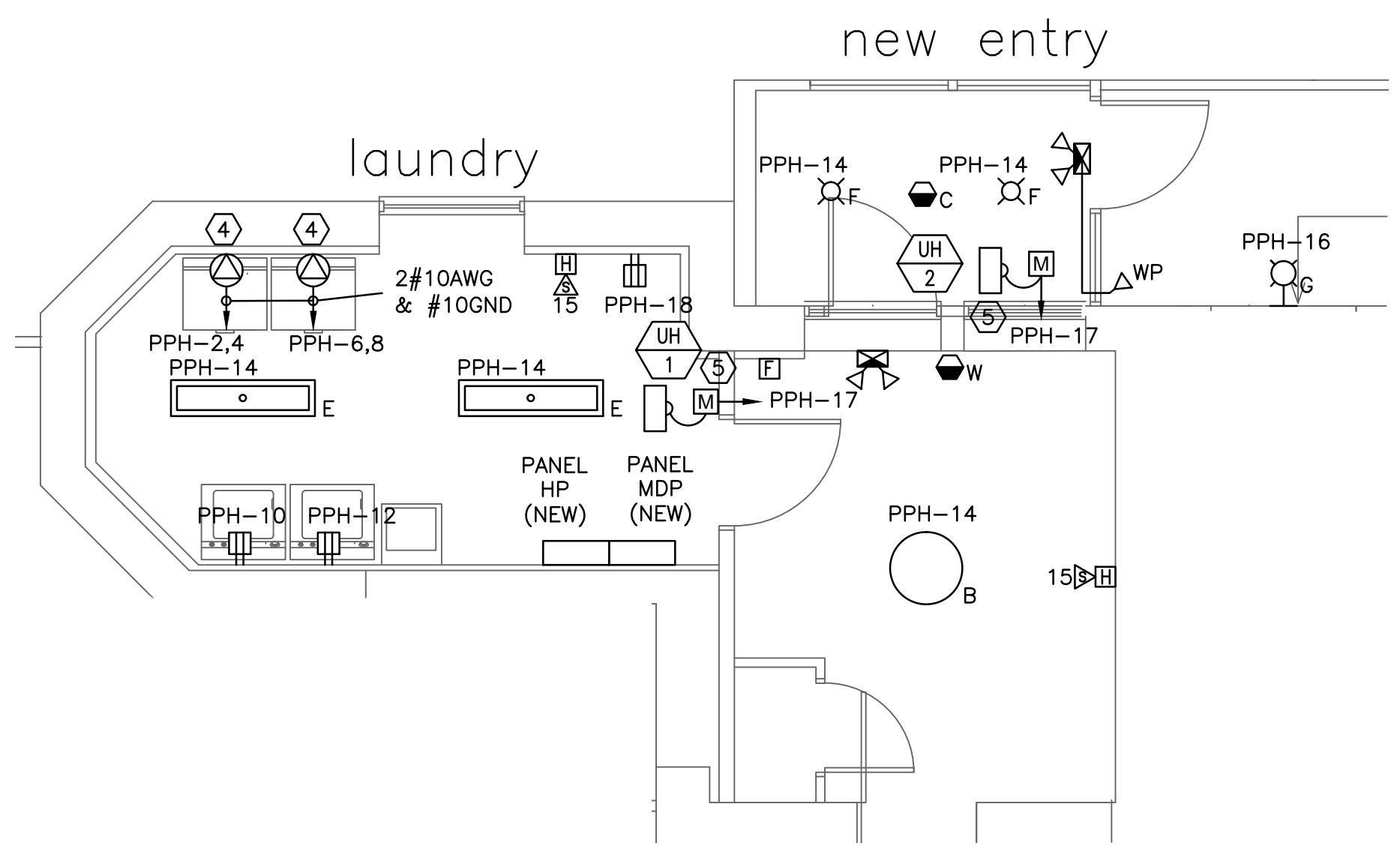
1 ELECTRICAL POWER & SYSTEMS PLAN FIRST FLOOR – NEW  
SCALE: 1/8"=1'



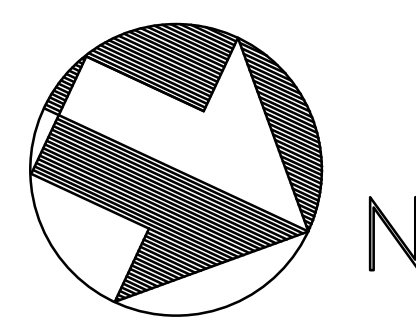
2 ELECTRICAL POWER & SYSTEMS PLAN SECOND FLOOR – NEW  
SCALE: 1/8"=1'



3 ELECTRICAL POWER & SYSTEMS DETAIL – BOILER/STORAGE  
SCALE: 1/4"=1'



4 ELECTRICAL POWER & SYSTEMS DETAIL – LAUNDRY/NEW ENTRY  
SCALE: 1/4"=1'



- NOTES:**
- SEE E0.0 FOR LEGEND, ABBREVIATIONS AND GENERAL NOTES.
  - COORDINATE INSTALLATION LOCATIONS OF LIGHTING FIXTURES IN THE BOILER ROOM WITH DUCTWORK.

- KEYED NOTES:**
- INSTALL NEW METERING EQUIPMENT AND SERVICE. NEW SERVICE MAST MUST BE INSTALLED TO A HEIGHT SUCH THAT THE OVERHEAD LINE IS NO LESS THAN 10' ABOVE ROOF THAT IT CROSSES OVER.
  - REPLACE EXISTING ELECTRICAL SWITCHBOARD IN THIS ROOM. SERVICES SHALL BE CUT OVER TO NEW PANEL MDP IN LAUNDRY. REMOVE SWITCHBOARD WHEN COMPLETE.
  - EXISTING FIRE ALARM CONTROL PANEL, NOTIFIER MODEL FIRE WARDEN-100. COORDINATE INSTALLATION OF NEW NOTIFICATION AND INITIATION DEVICES WITH NORRIS, INC. (800) 370-3473.
  - ELECTRIC DRYER RECEPTACLE, COORDINATE WIRING AND RECEPTACLE NEMA RATING WITH DRYER FURNISHED.
  - UNIT HEATER. REMOVE CORD AND PLUG AND HARD WIRE TO MANUAL TOGGLE SWITCH MOUNTED IN WALL IN VICINITY OF HEATER.
  - INSTALL NEW EXTERIOR LIGHT. CONTROL WITH DAYLIGHT SENSOR.
  - REPLACE EXISTING LIGHT REWIRE TO EXISTING CIRCUIT AND CONTROLS.

project name

**Butler Payson**  
pine st.  
state st.  
portland, me

avesta housing

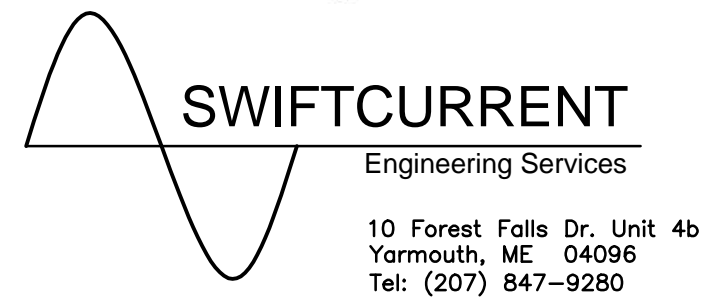
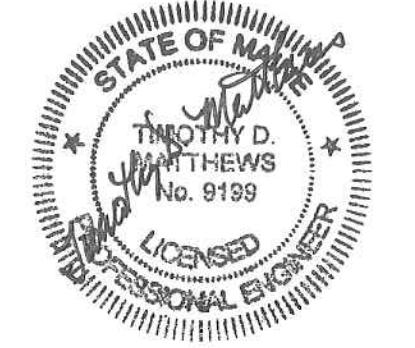
goduti/thomas architects

44 oak st.

portland, maine 04101

ph. 207-775-3184

fax 207-774-0486



ISSUED FOR PERMIT

revisions

date  
Feb. 6, 2015

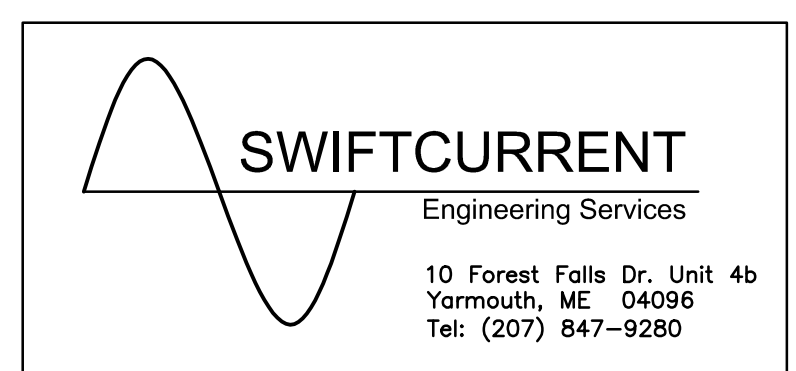
sheet title

ELECTRICAL POWER & SYSTEM PLAN  
– NEW FIRST & SECOND FLOOR

scale: as shown

drawn by:JMD checked by:TDM

project number



PE1.0