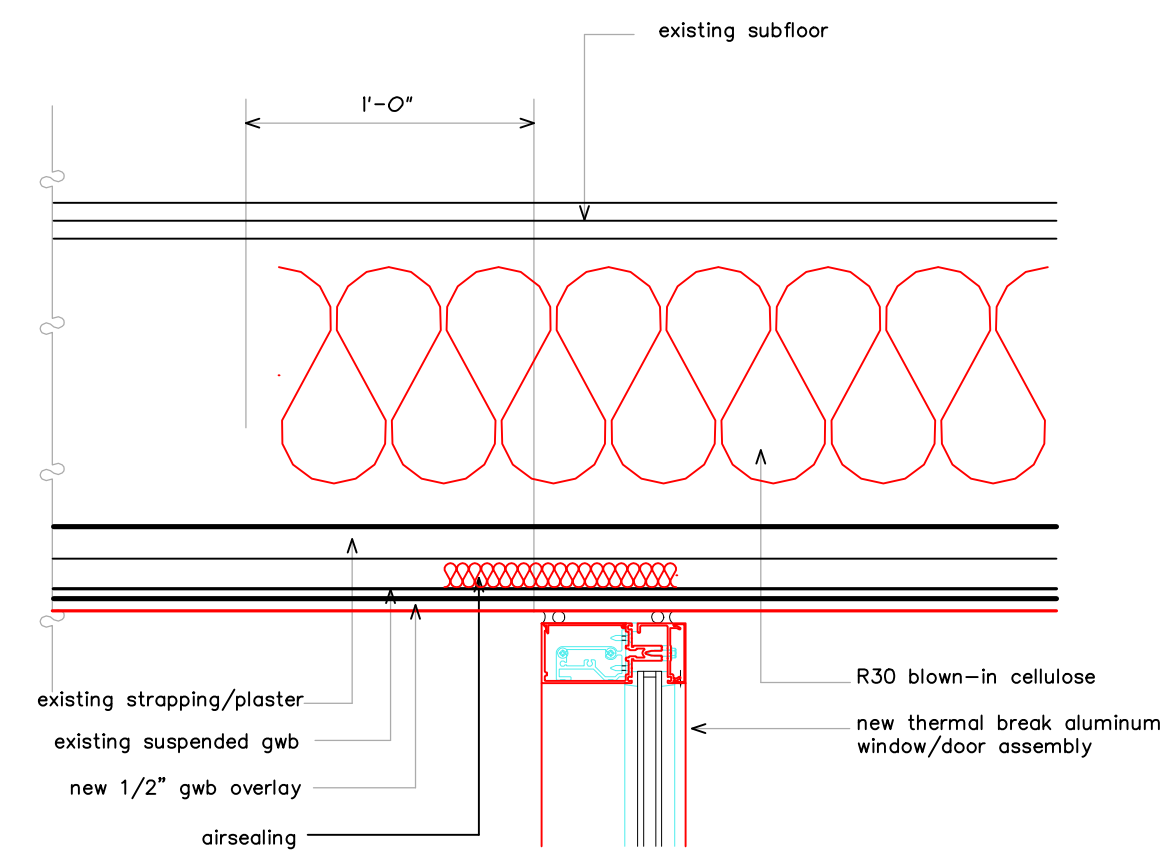
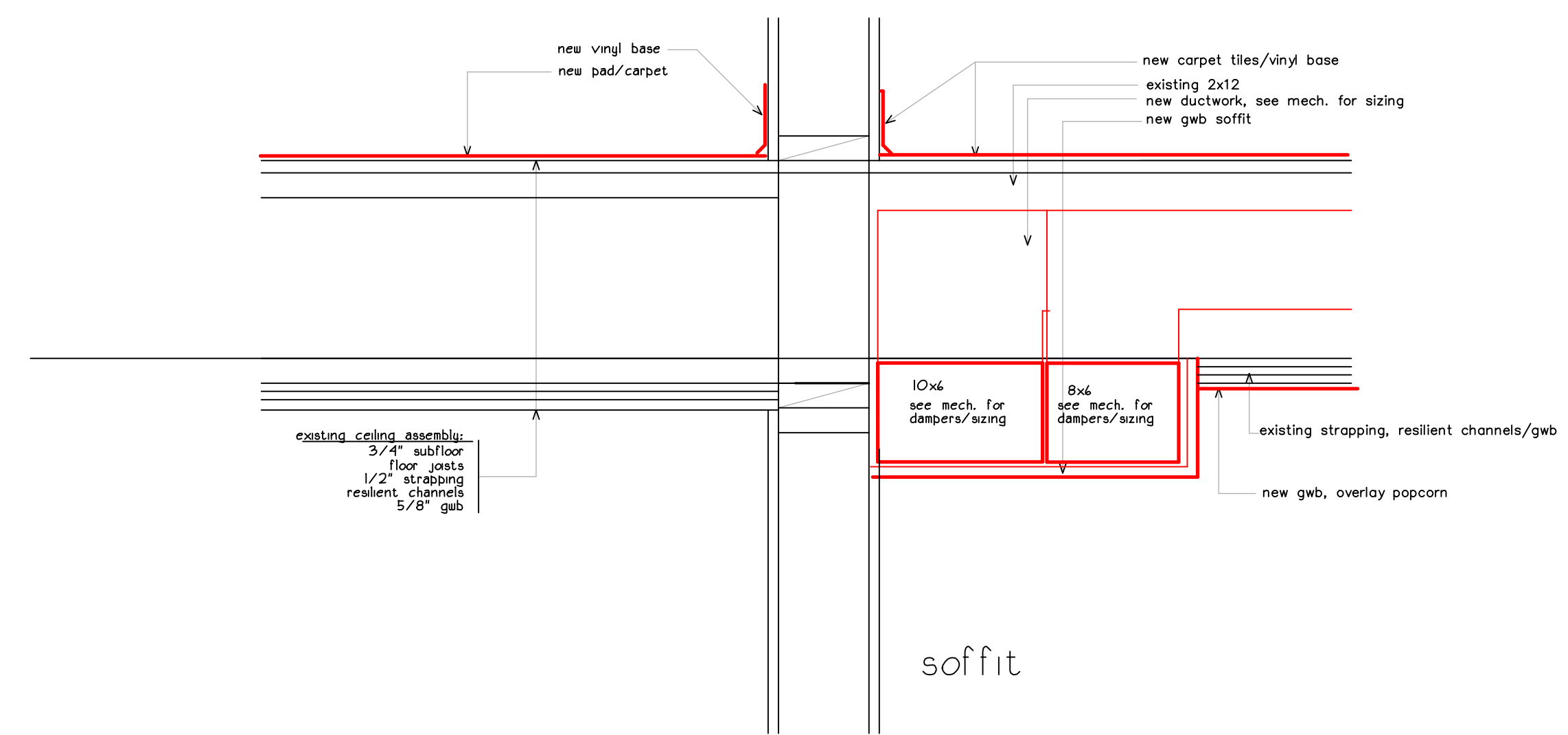


1 exterior entry section
insulated

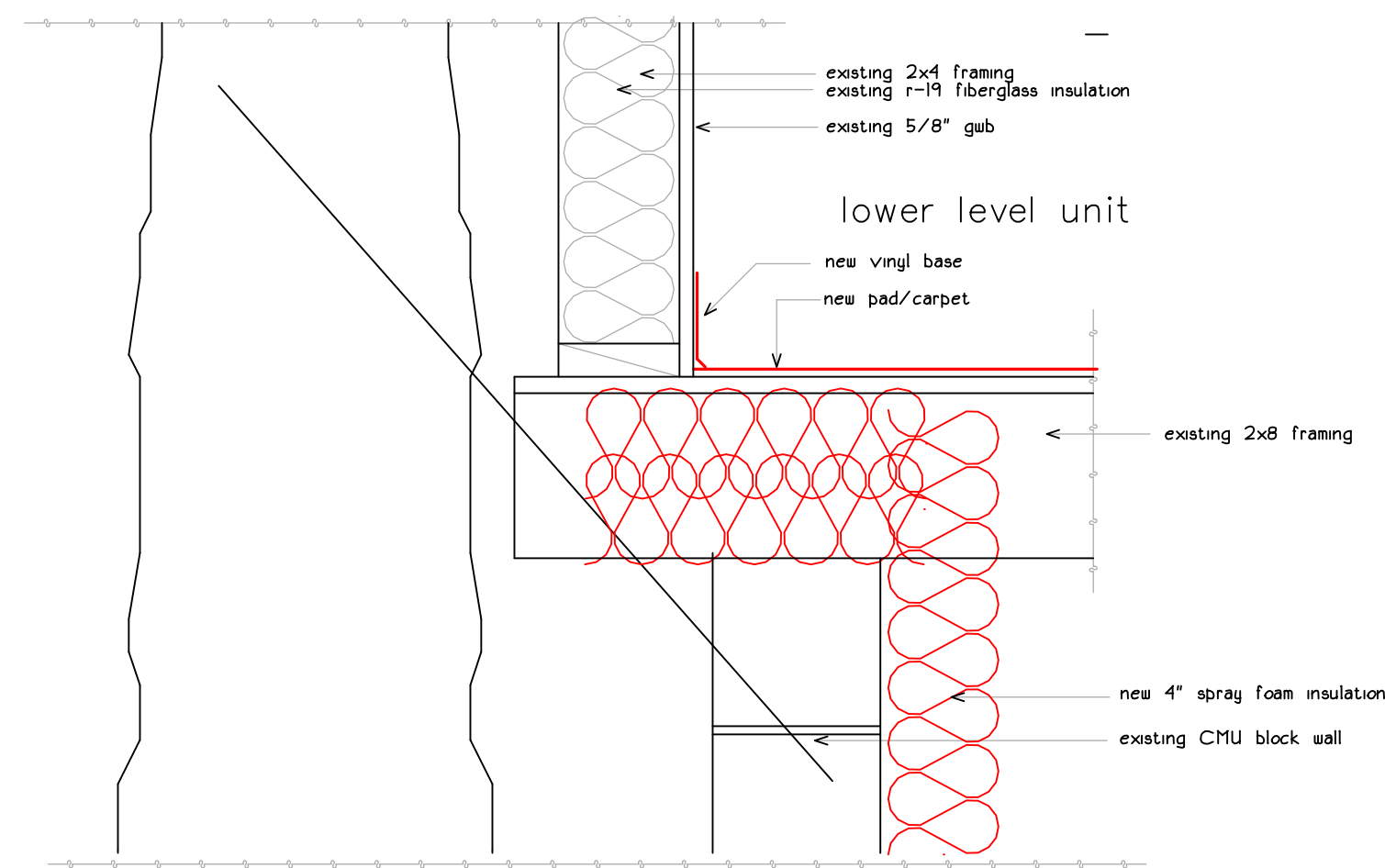


2 exterior entry section
insulated

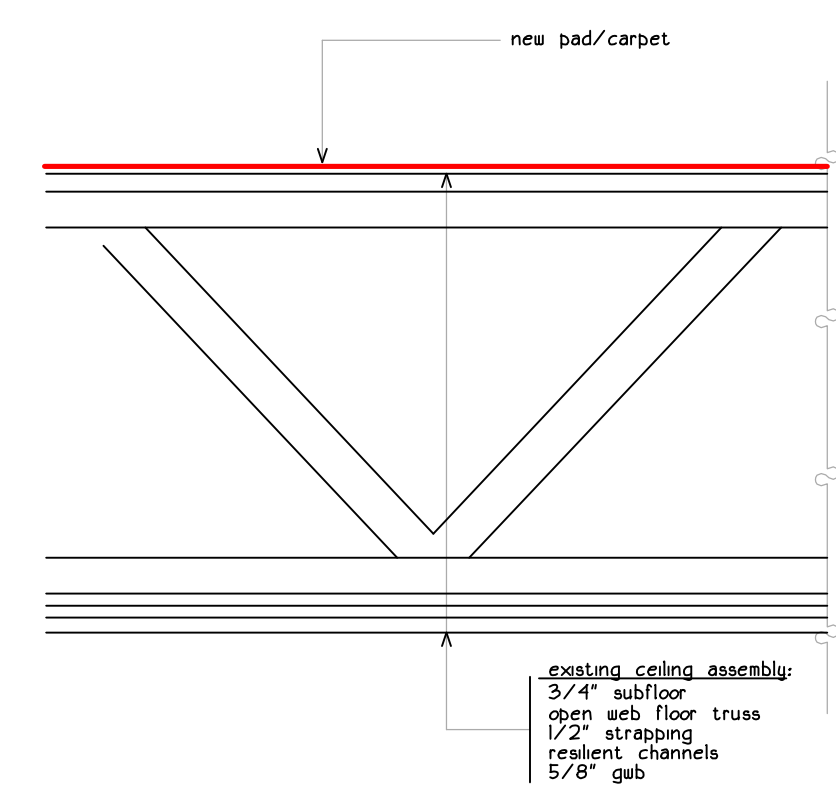


3 typical unit section

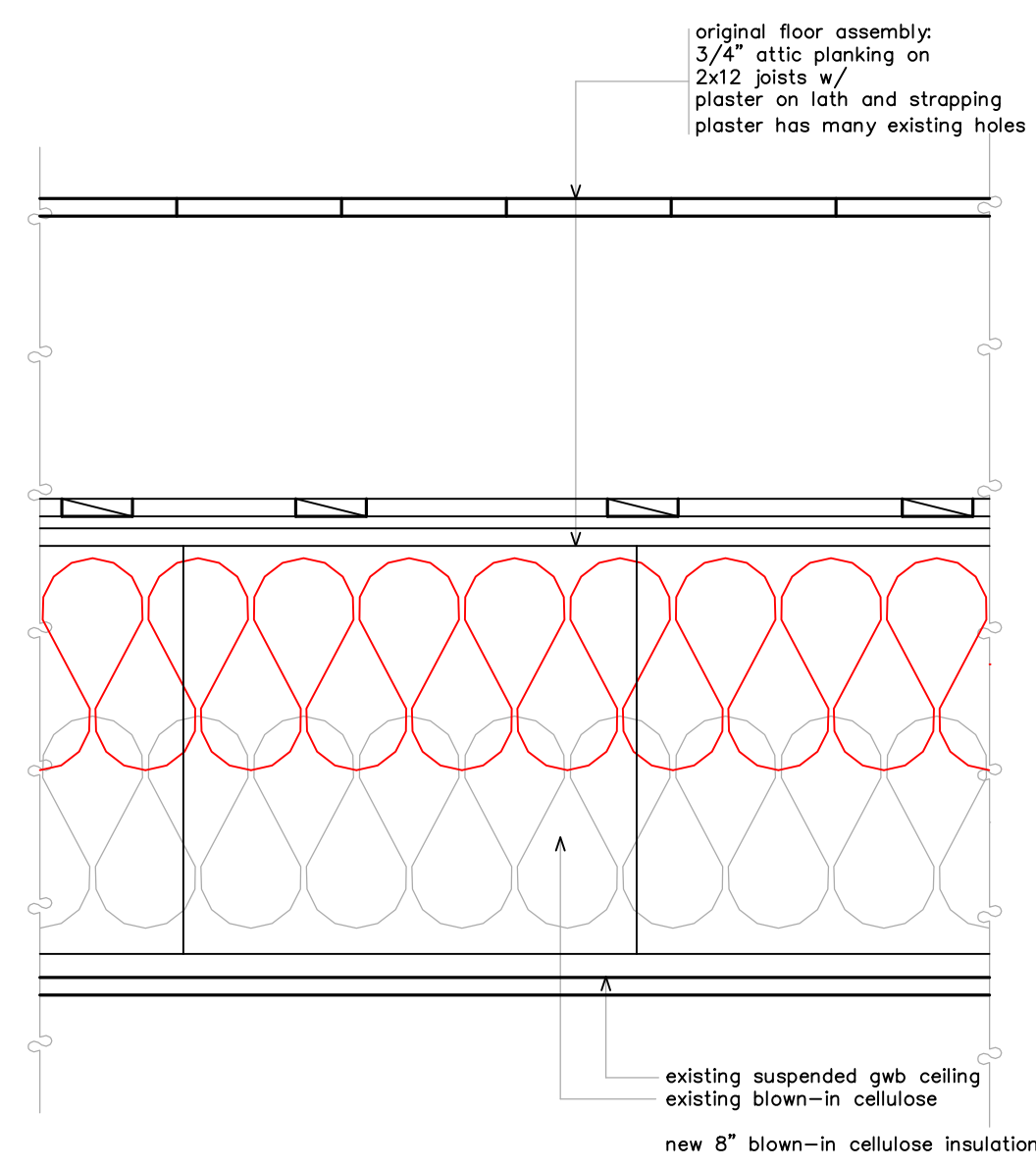
4 typical corridor section
soffit mechanical duct work



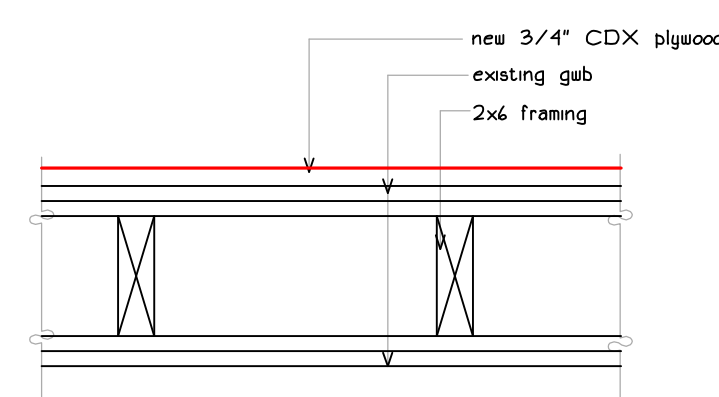
5 original crawl space
2 hr rated



6 bathroom ceilings
mr gwb

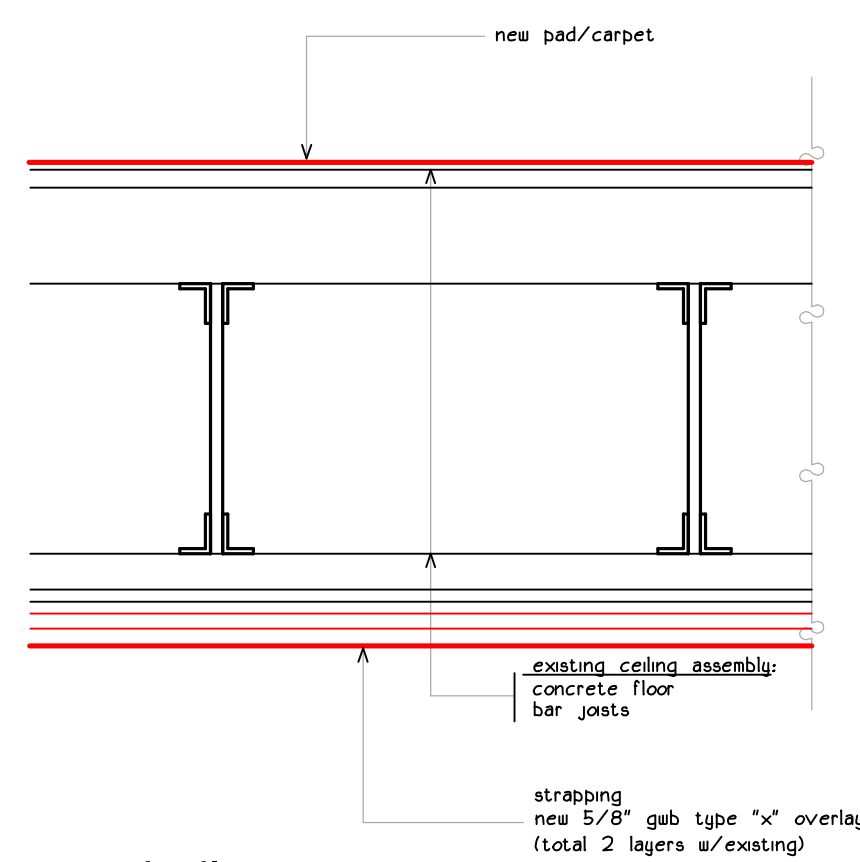


8/9 corridor/units top 4th floor
mr gwb

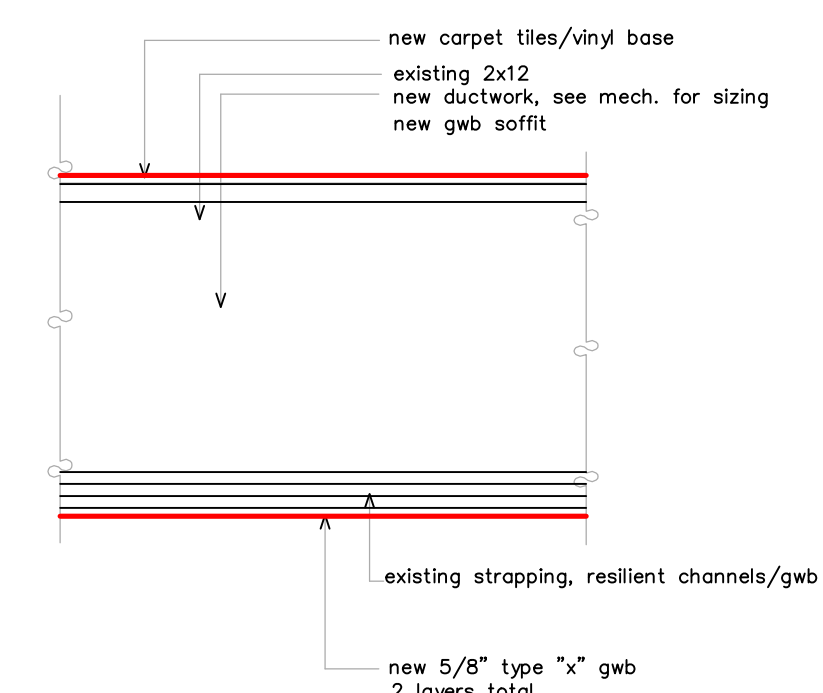


10 corridor/units top 3rd floor
mr gwb

11 elevator pent house
(presumed 2hr)



12 boiler room
2hr rated



13 ceiling at extend stairwell
2hr rated

project name

butler payson
pine street
state street
portland, maine

Avesta Housing

goduti/thomas architects

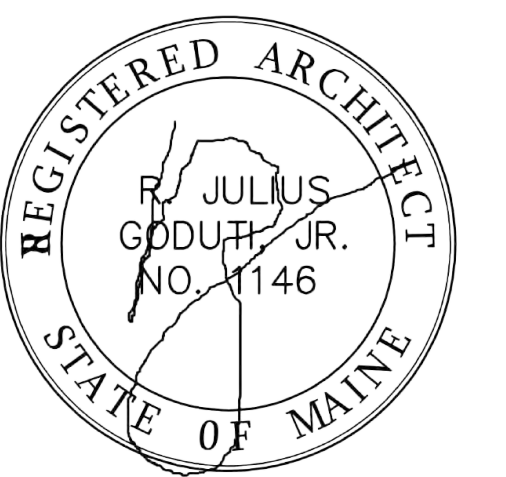
44 oak st.

portland, maine 04101

ph. 207-775-3184

fax 207-774-0846

sheet number



revisions

date

january 17th, 2014

sheet title

ceiling details

section views unless noted

scale

1 1/2" = 1'-0"

drawn by

MS

project number

sheet number

PA5.6