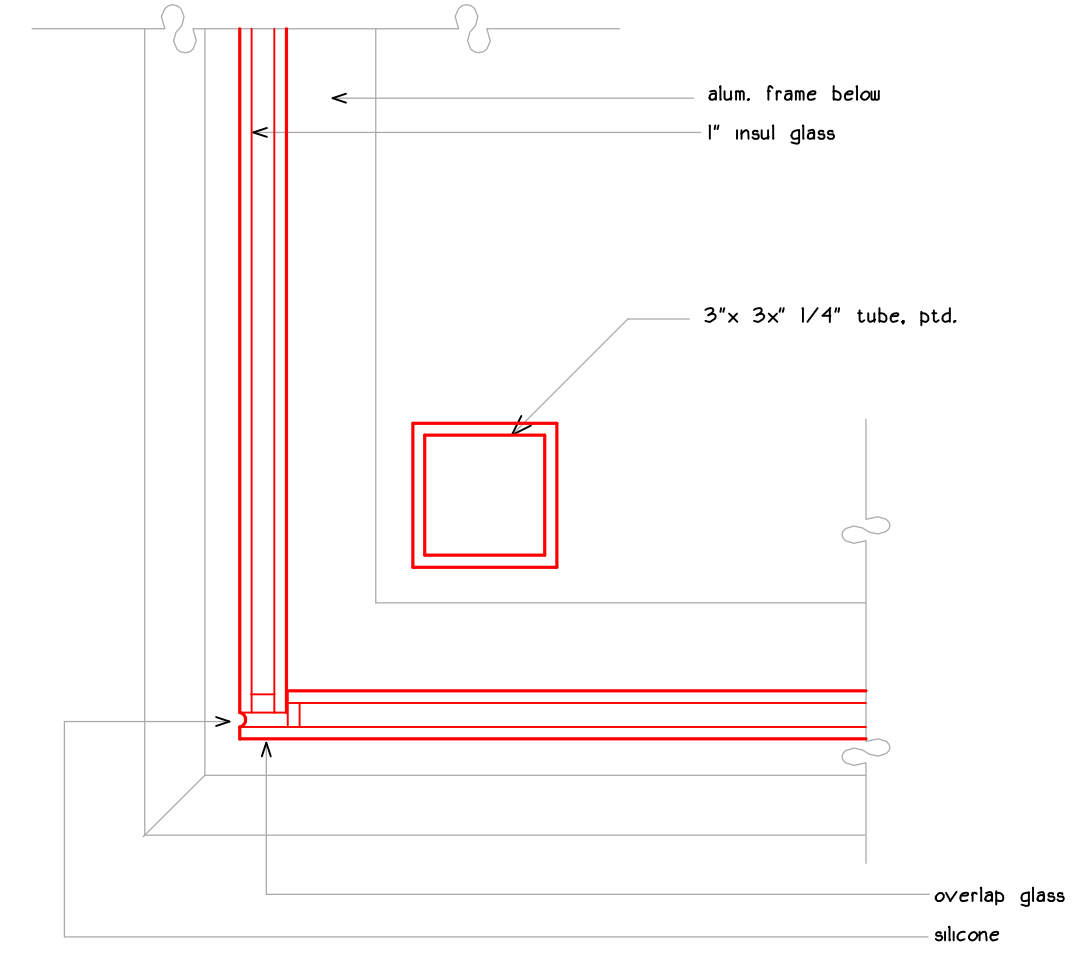
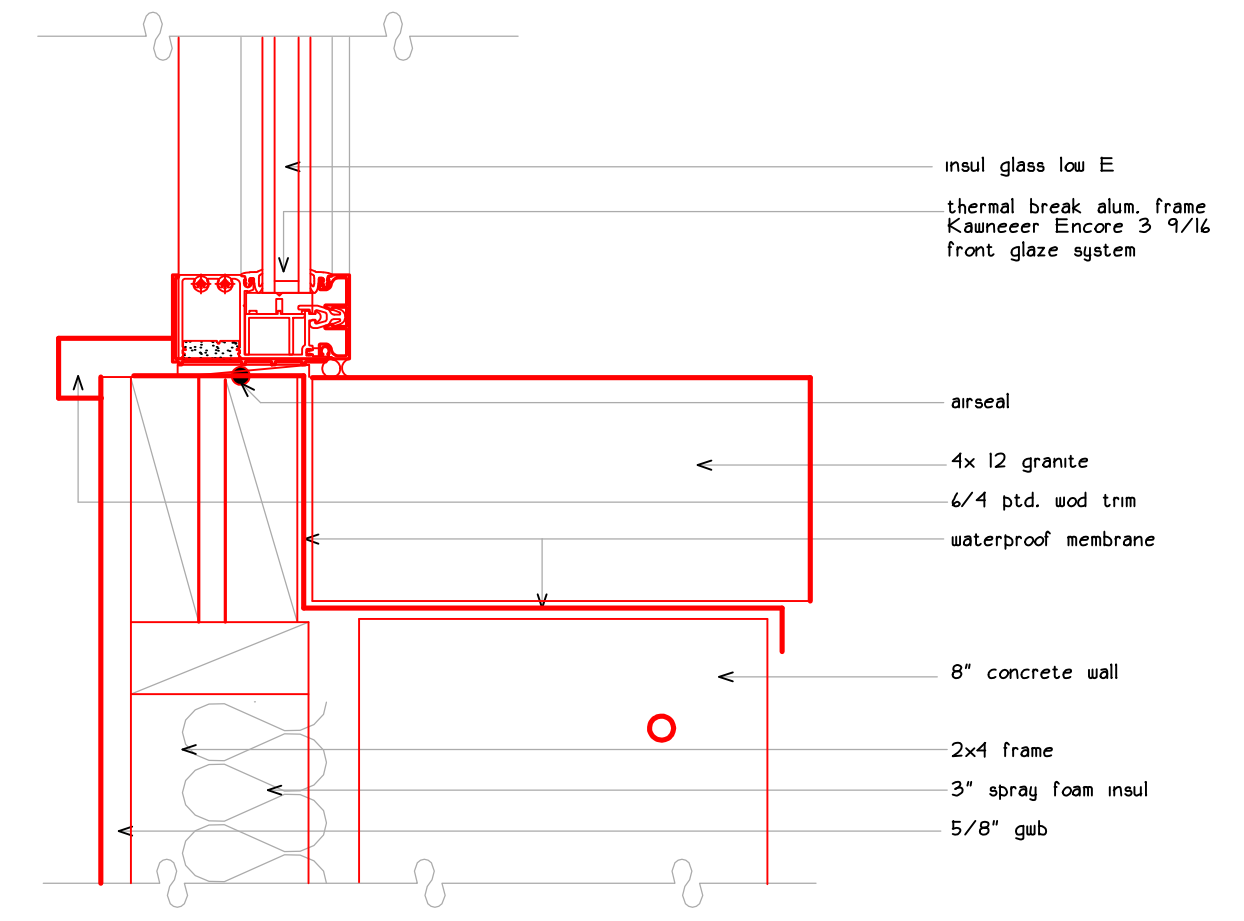


1 vestibule glass/ frame head

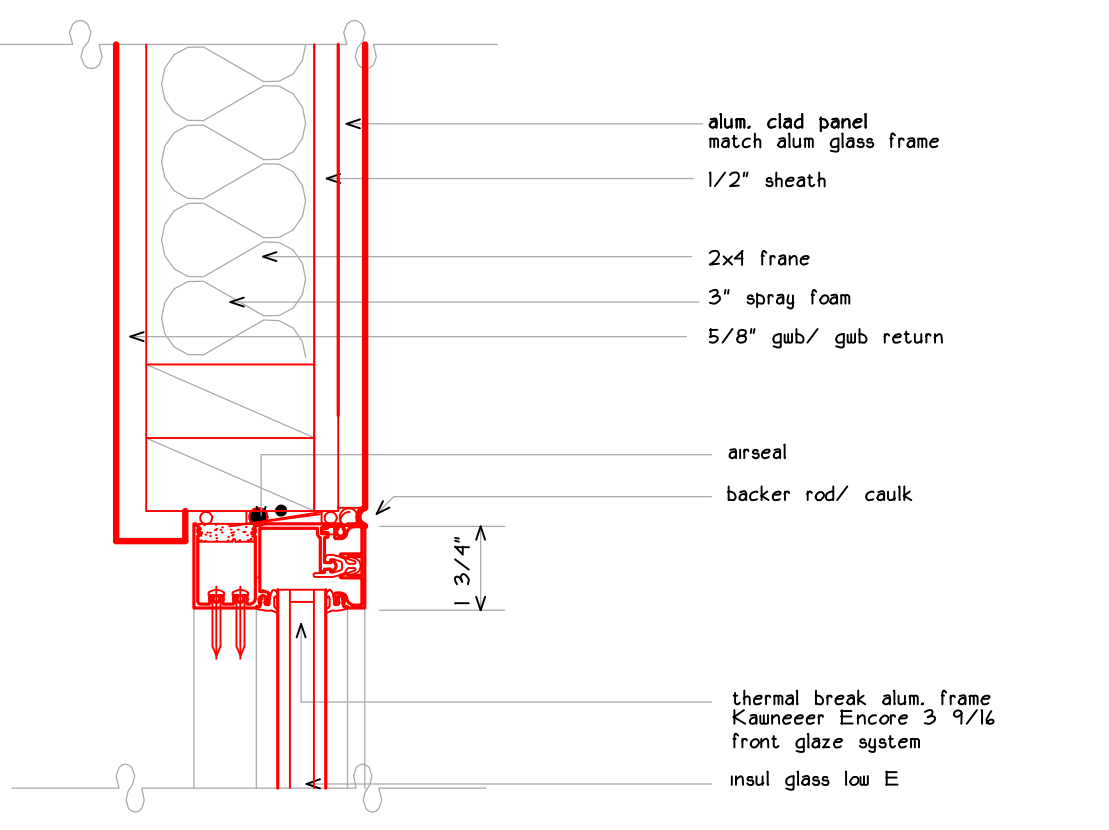
2 vestibule door head/ jamb



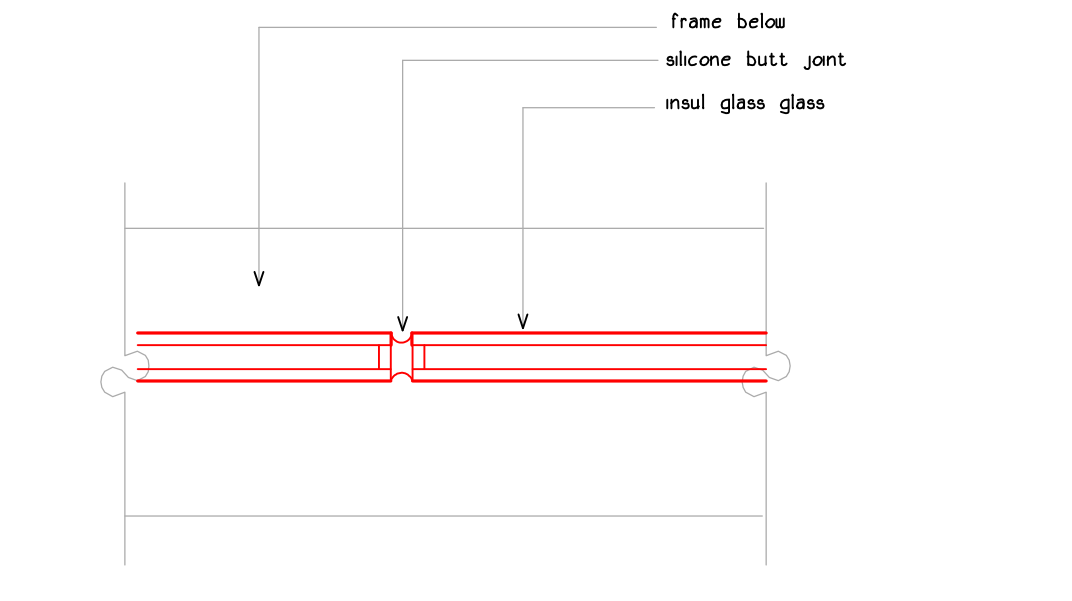
7 outside glass corner



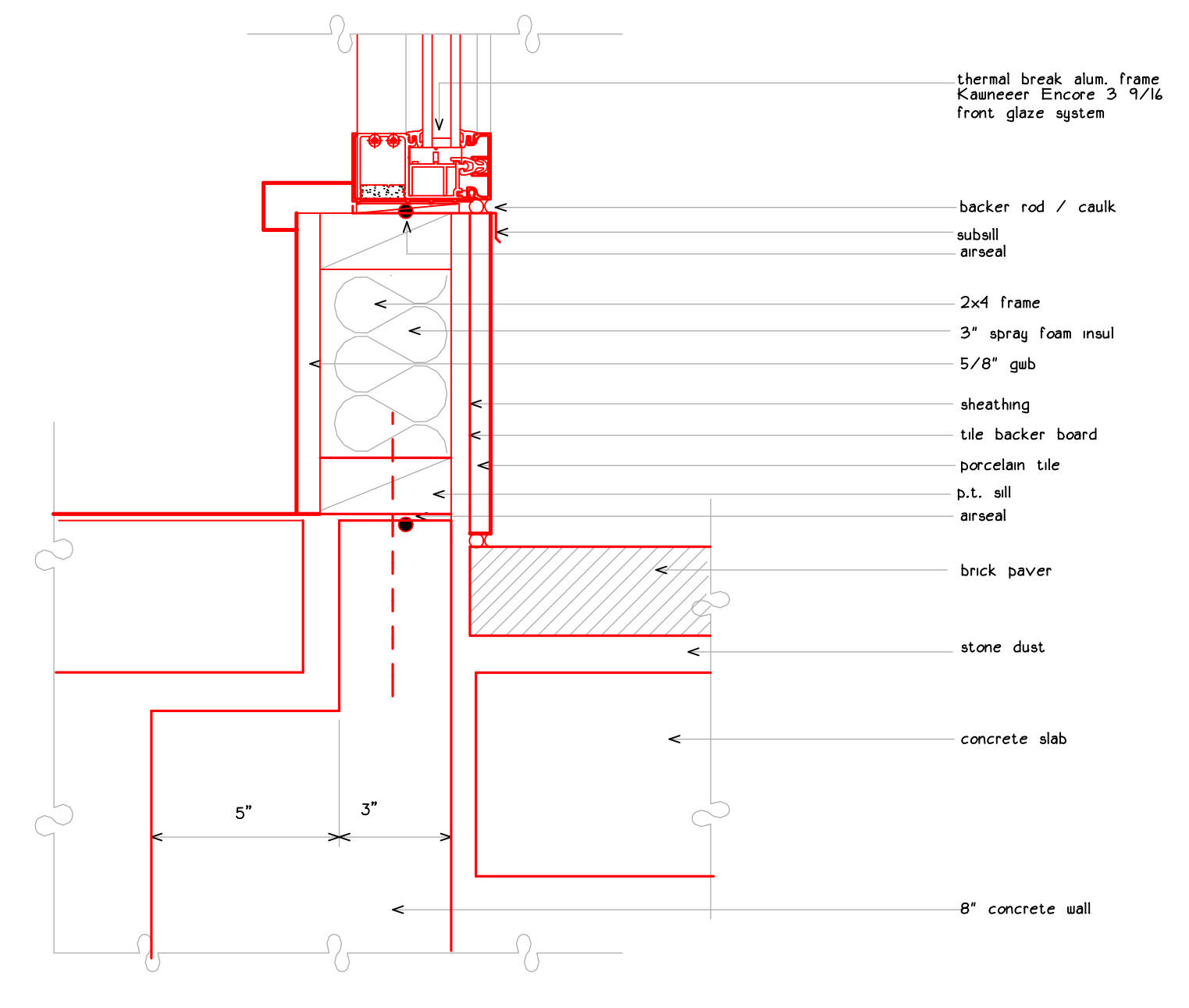
3 vestibule glass/ frame sill @granite



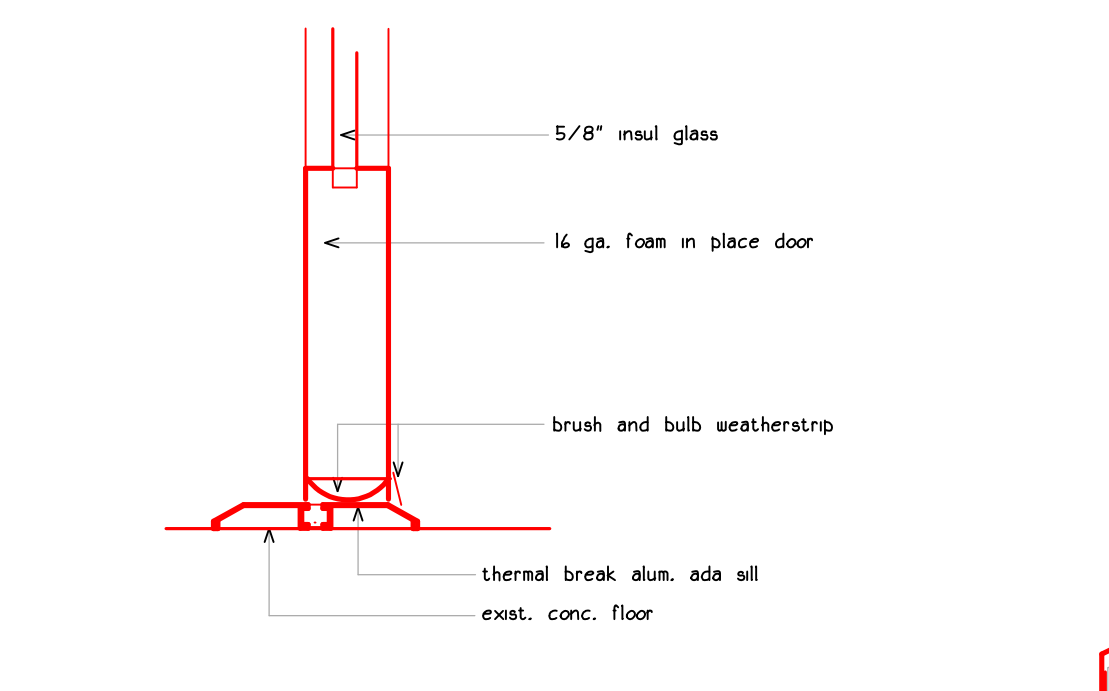
5 vestibule glass/ frame jamb



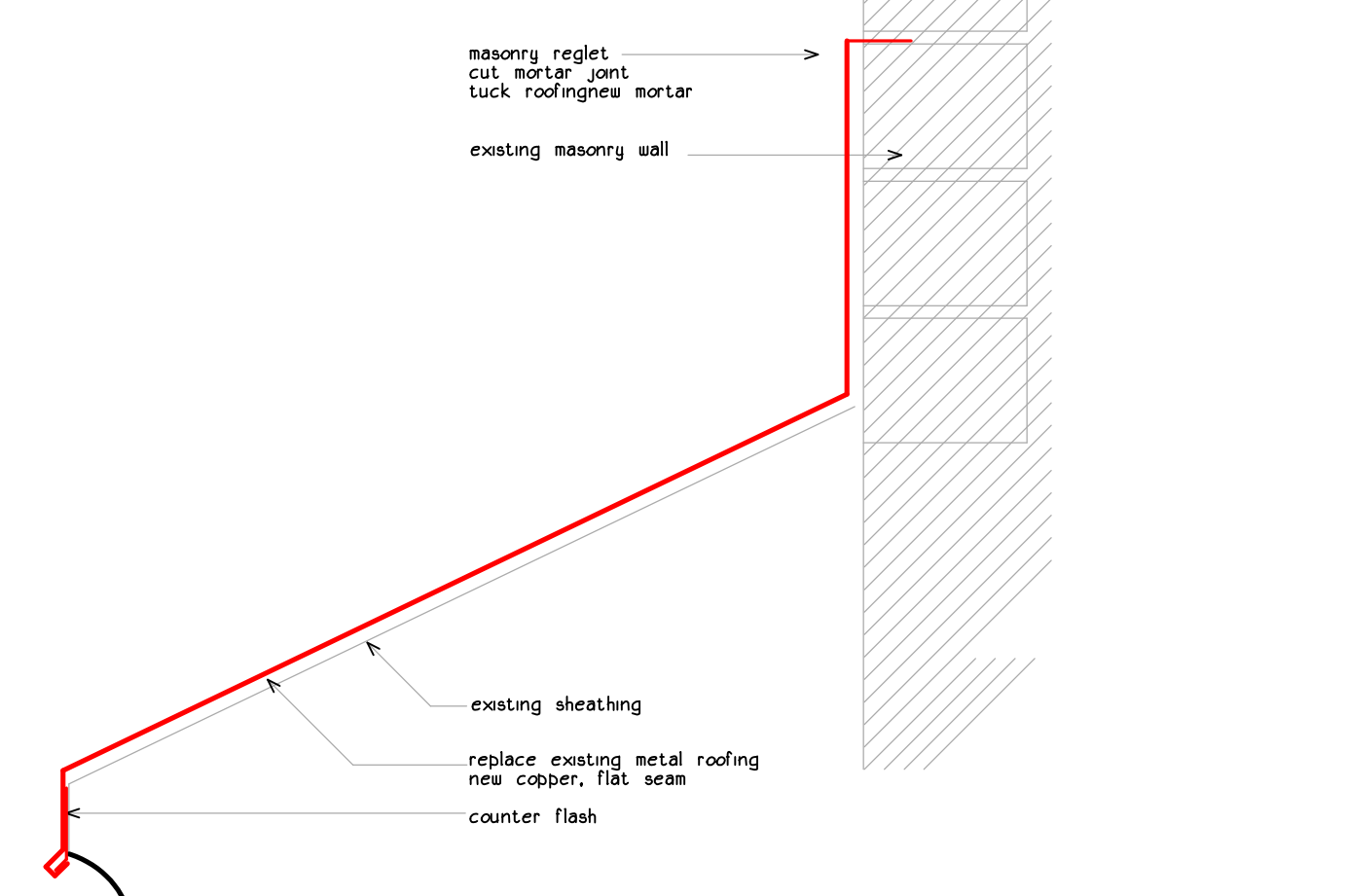
8 interior vestibule glass corner



4 vestibule glass/ frame sill adj. door



6 vestibule door sill



9 bay windows roof section

project name

**Butler Payson**  
pine st.  
state st.  
portland, maine

avesta housing

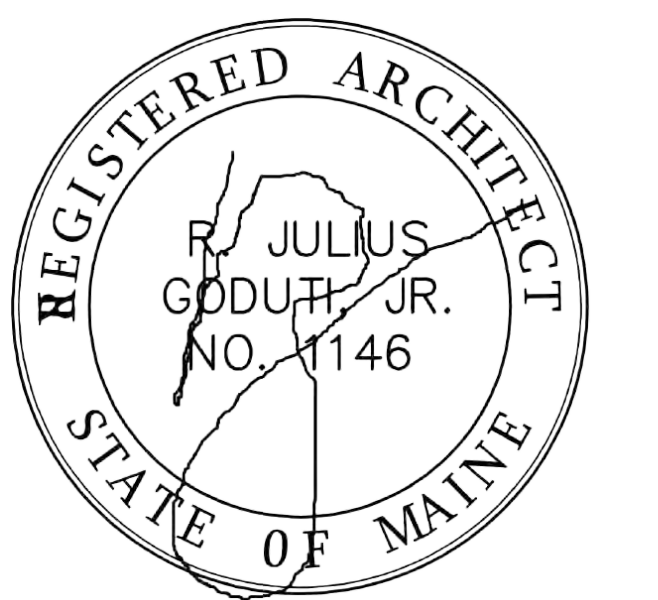
goduti/thomas architects

44 oak st.

portland, maine 04101

ph. 207-115-3184

fax 207-114-0846



revisions

date

january 17th, 2015

sheet title

storefront details

payson building

scale

3/8" = 1'-0"

drawn by

RG

project number

butler payson

sheet number

PA5.4