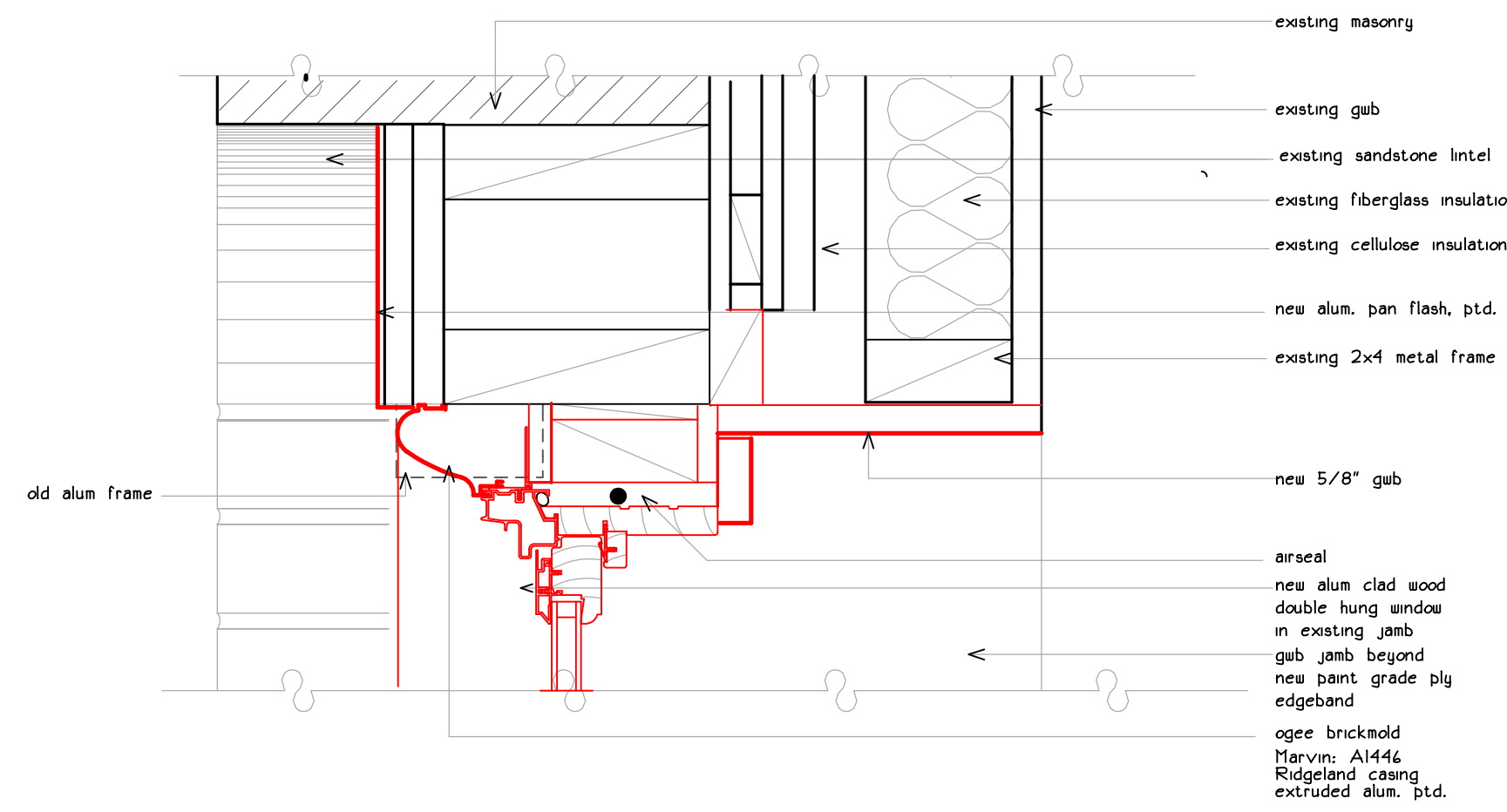
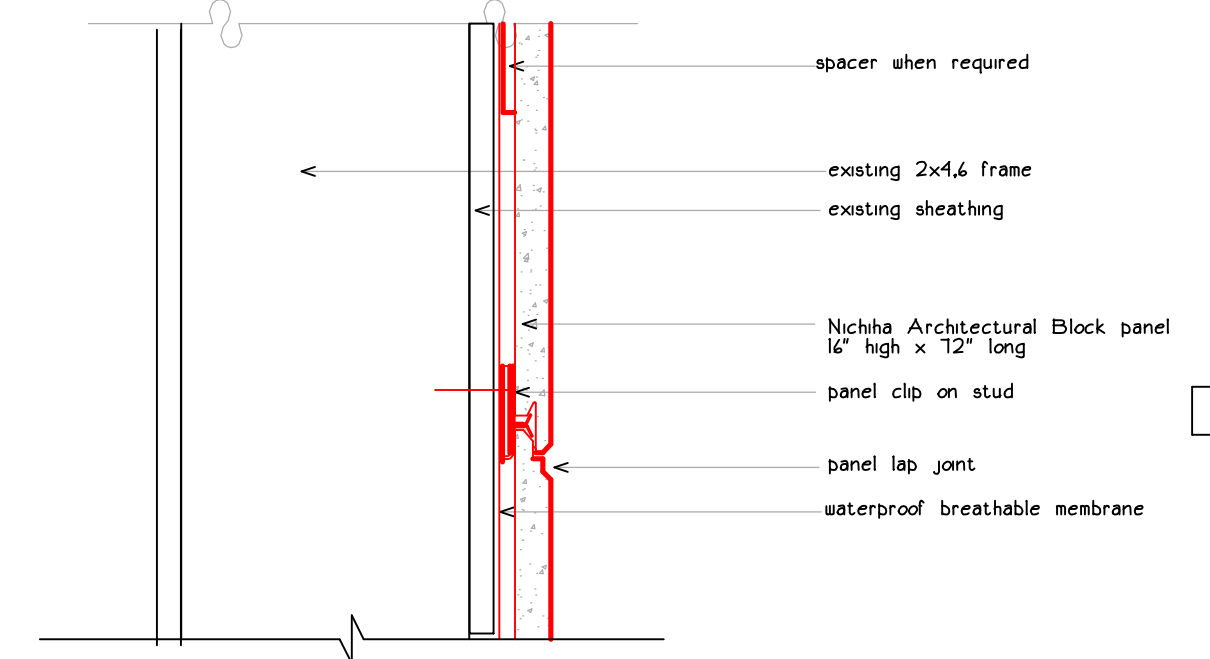


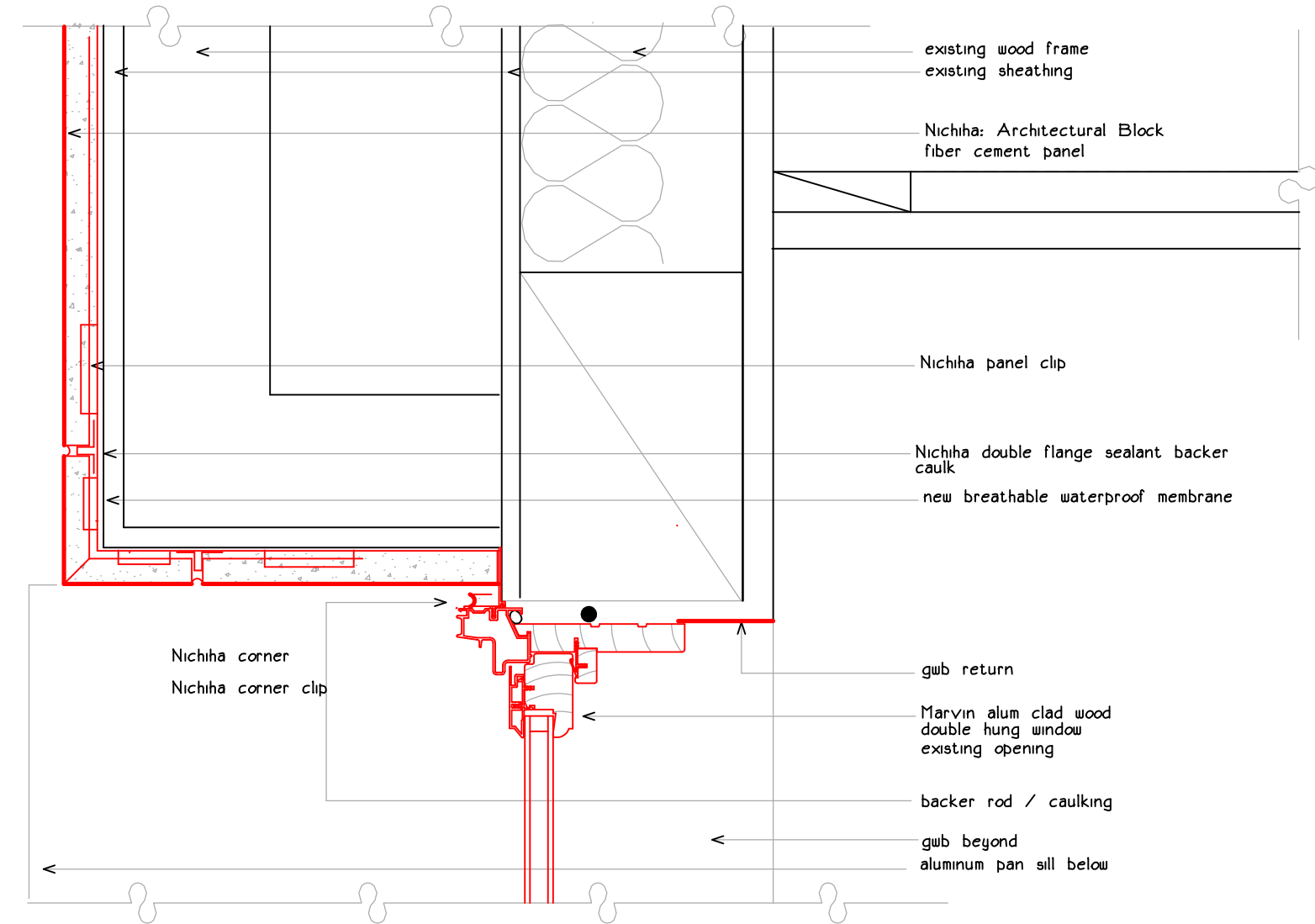
17 new head @ wood frame infill



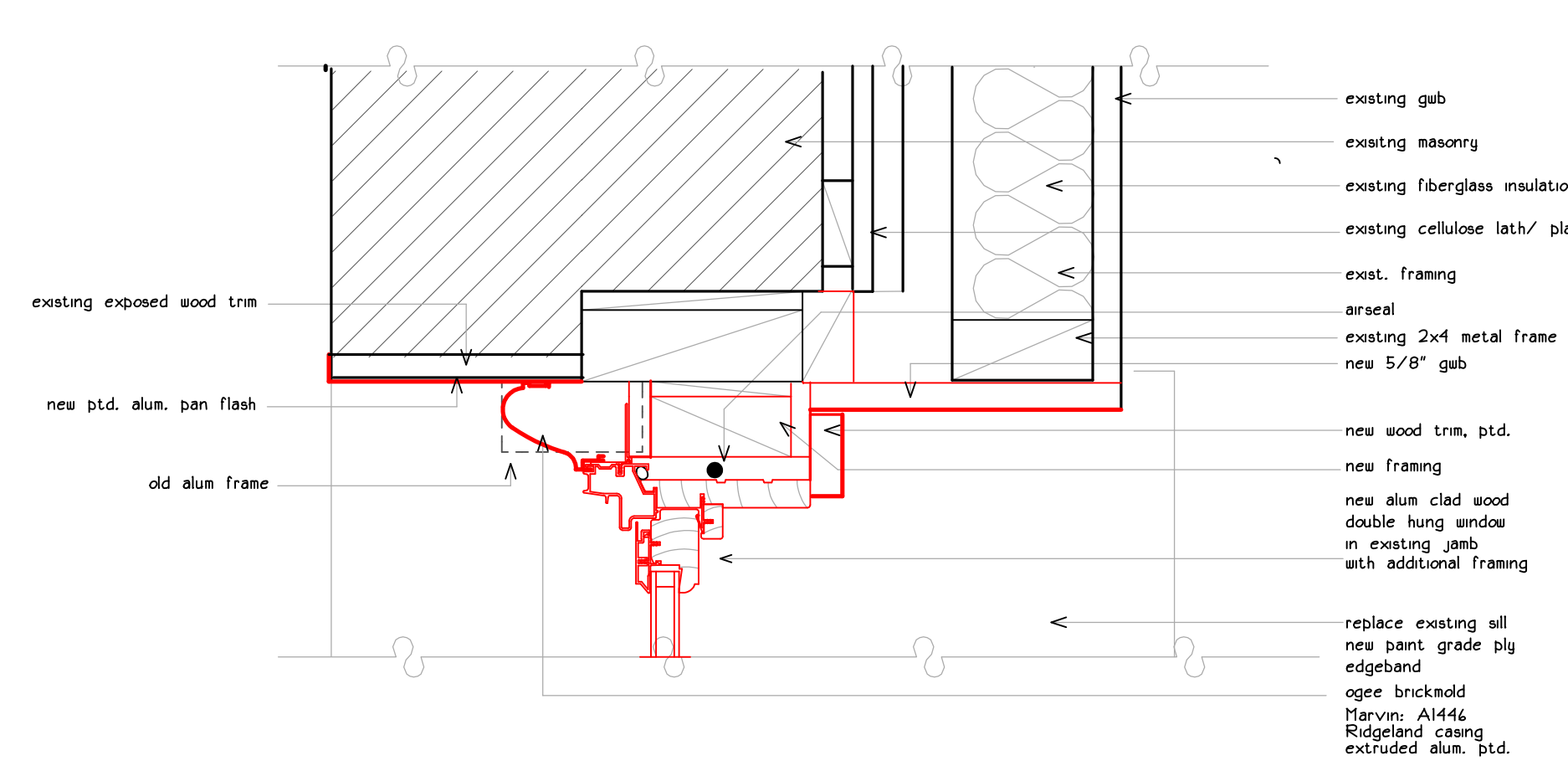
20 new d.h. head @ carriage bldg



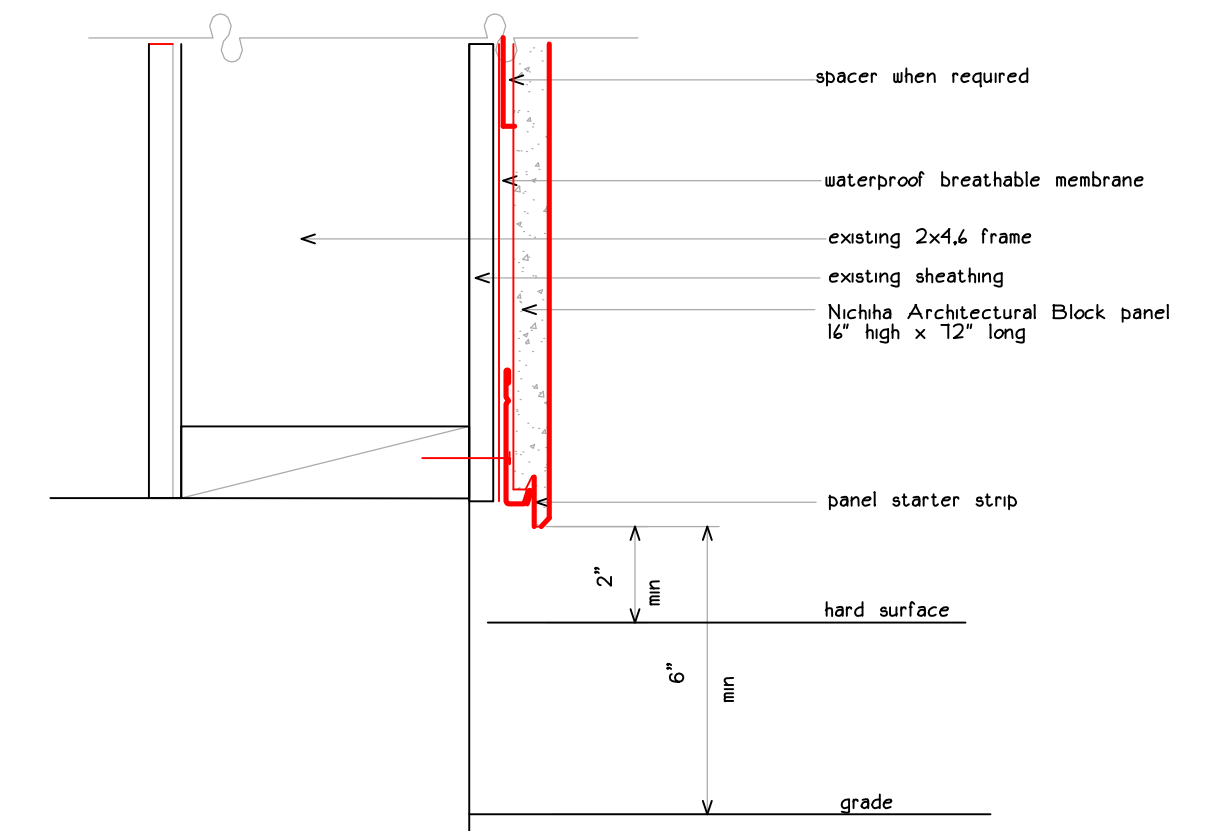
23 Nichiha horiz. panel joint



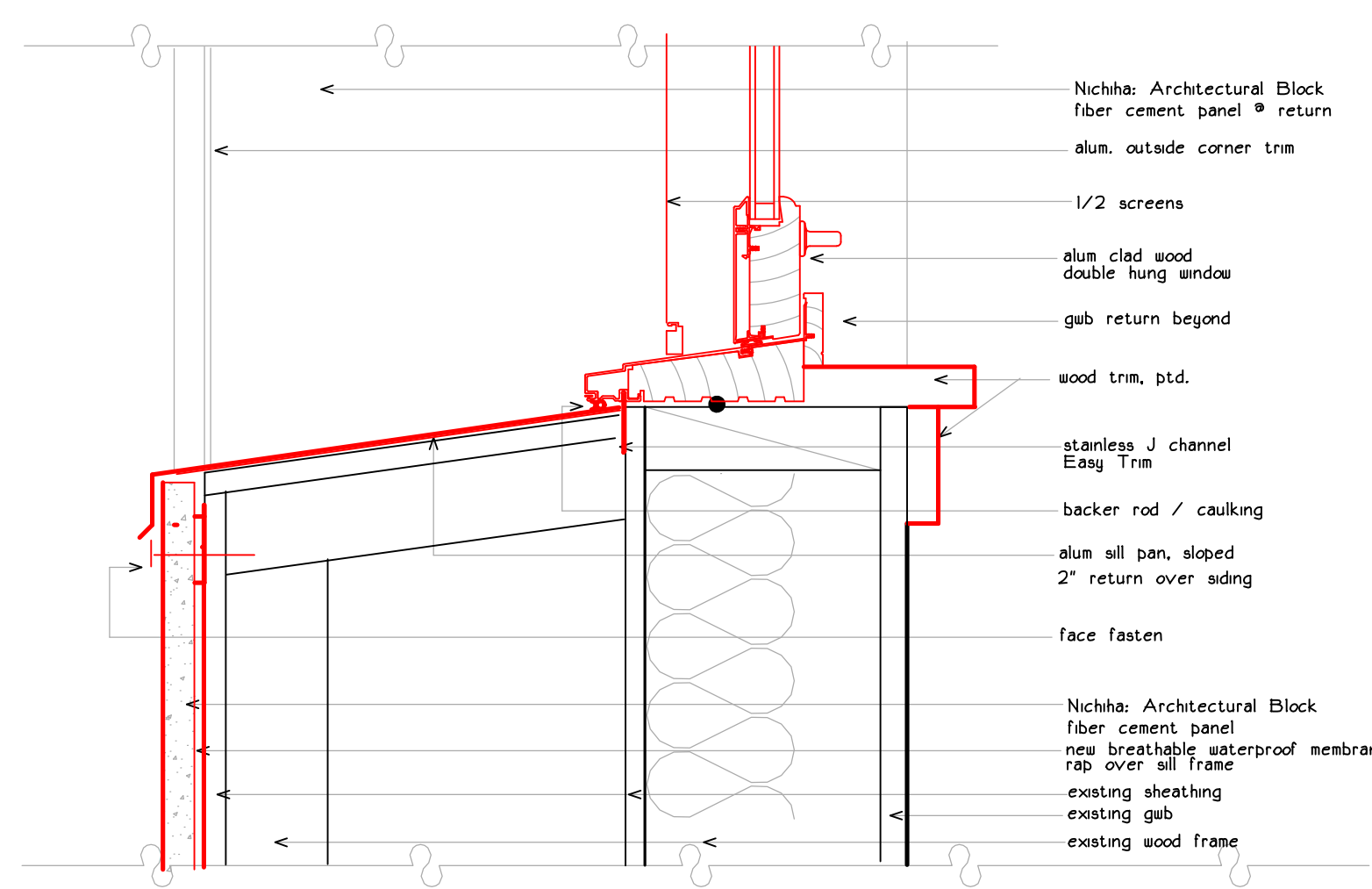
18 new jamb @ wood frame infill



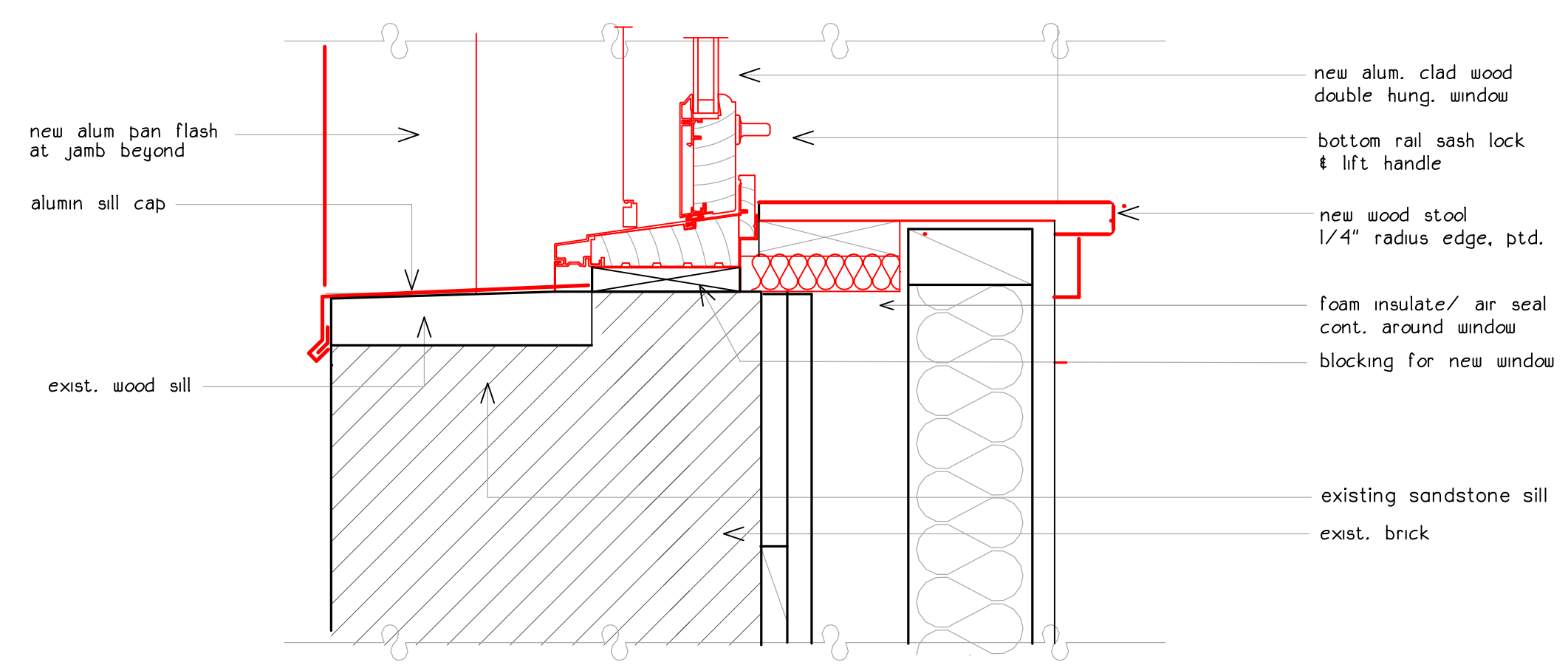
21 new d.h. jamb @ carriage bldg



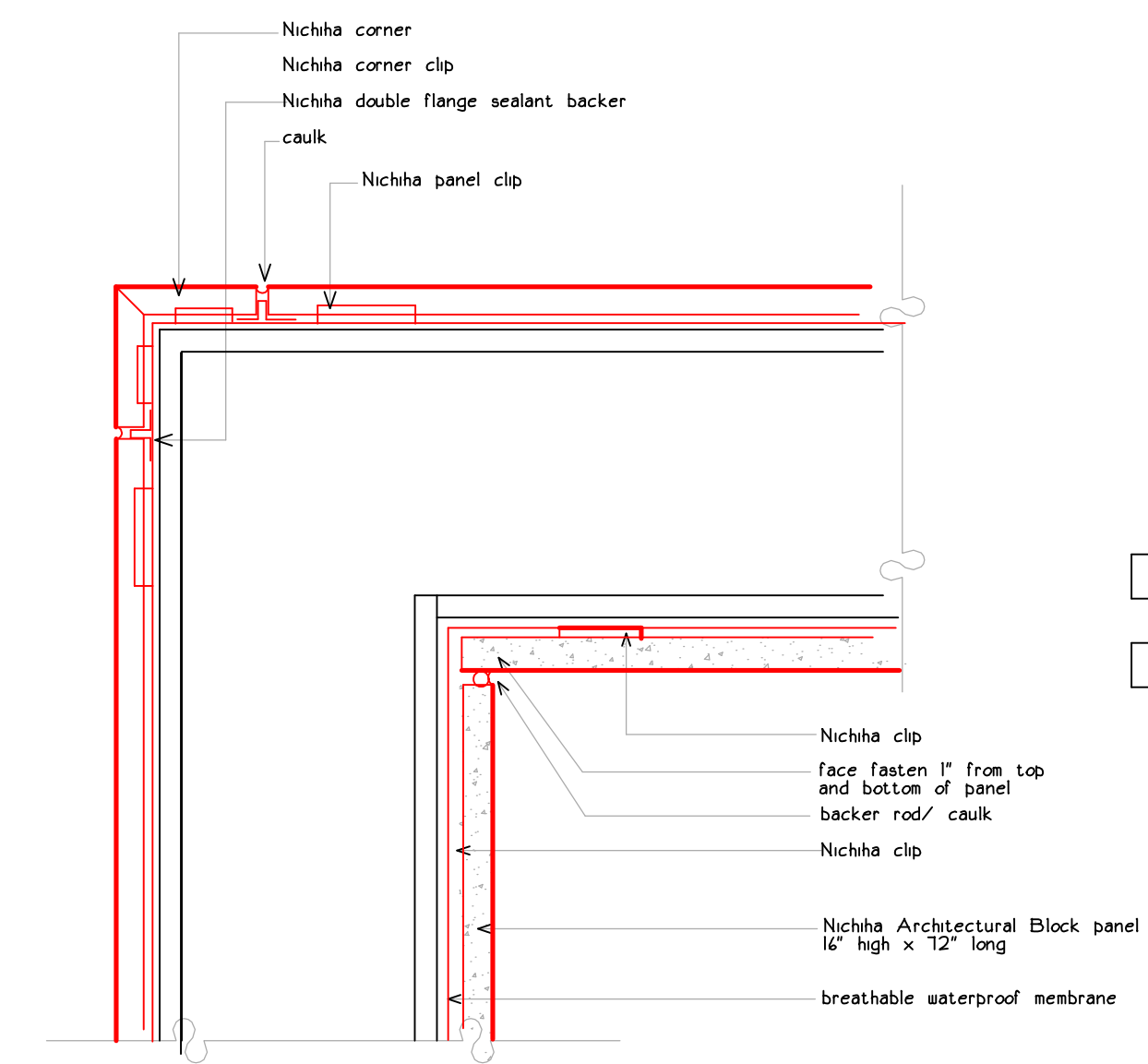
24 Nichiha starter course



19 new sill @ wood framed infill



22 new d. h. sill @ carriage bldg



25 Nichiha inside/ outside corner

project name

Butler Payson
pine st.
state st.
portland, maine

avesta housing

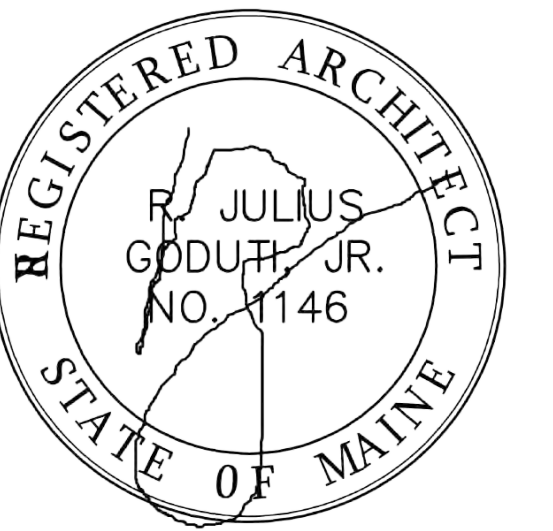
goduti/thomas architects

44 oak st.

portland, maine 04101

ph. 207-115-3184

fax 207-114-0846



revisions

date

january 17th, 2015

sheet title

marvin alum clad double hung details

payson building brick addition infill wood addition

scale
3/8" = 1'-0"

drawn by

RG

project number

butler payson

sheet number

PA5.3