

project name

**Butler Payson**  
pine st.  
state st.  
portland, maine

avesta housing

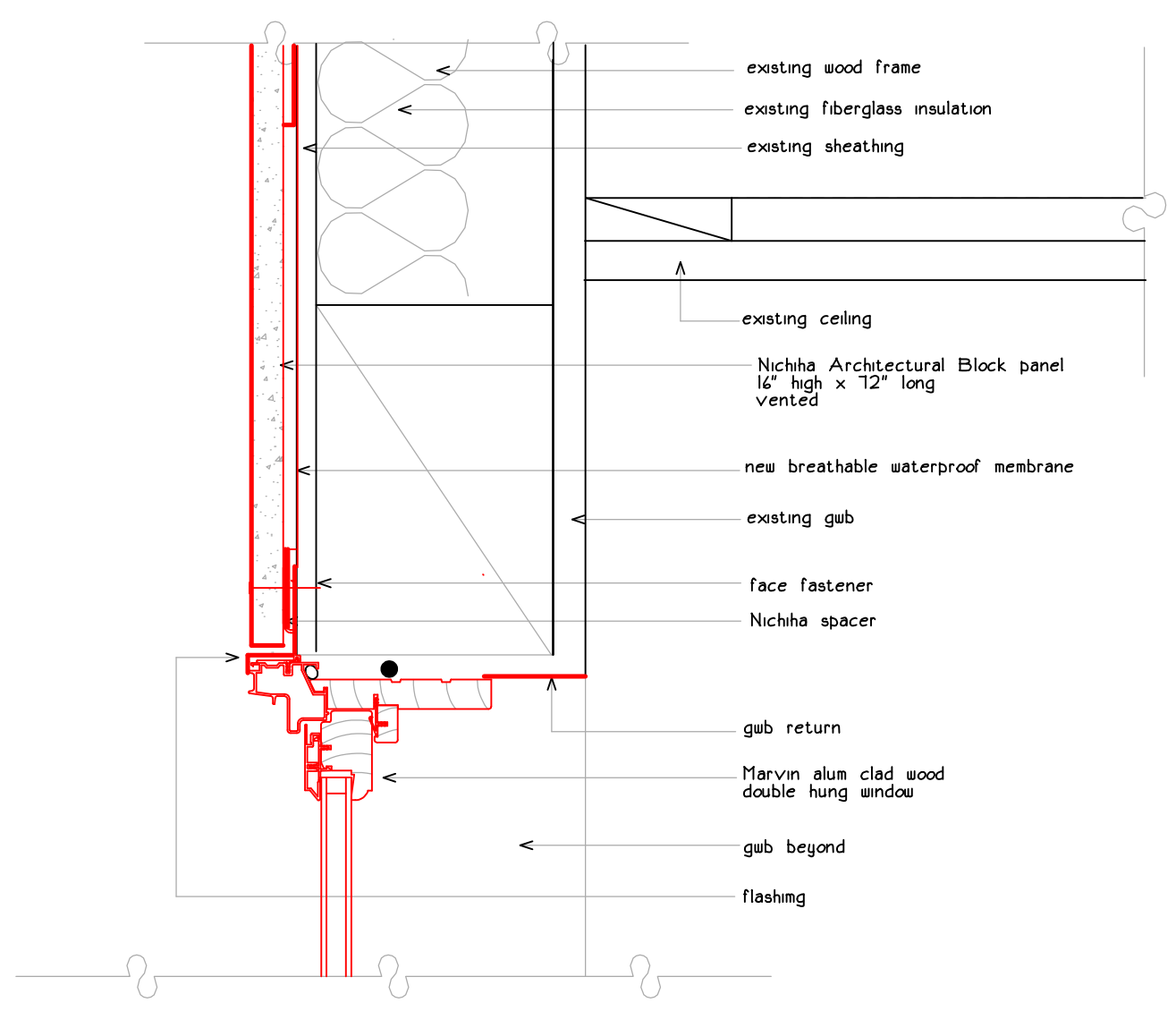
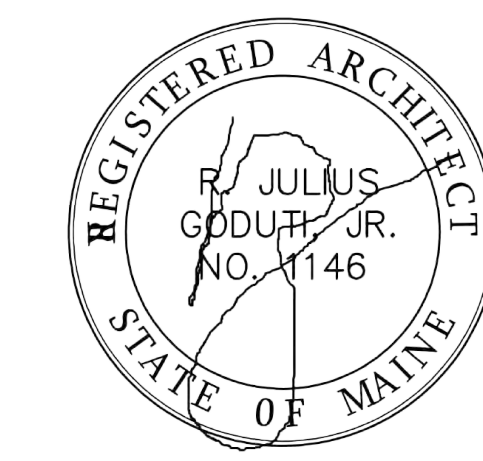
goduti/thomas architects

44 oak st.

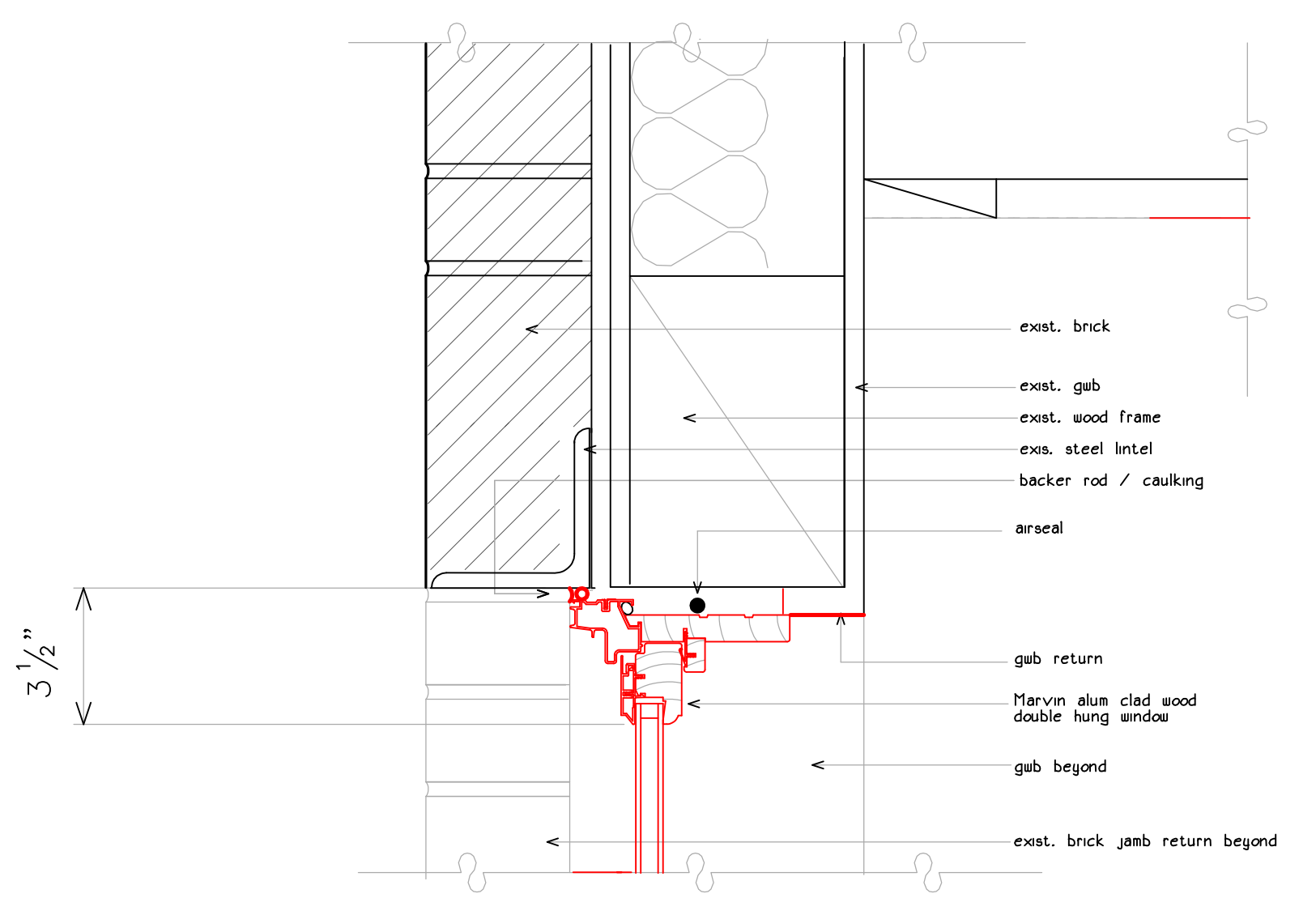
portland, maine 04101

ph. 207-775-3184

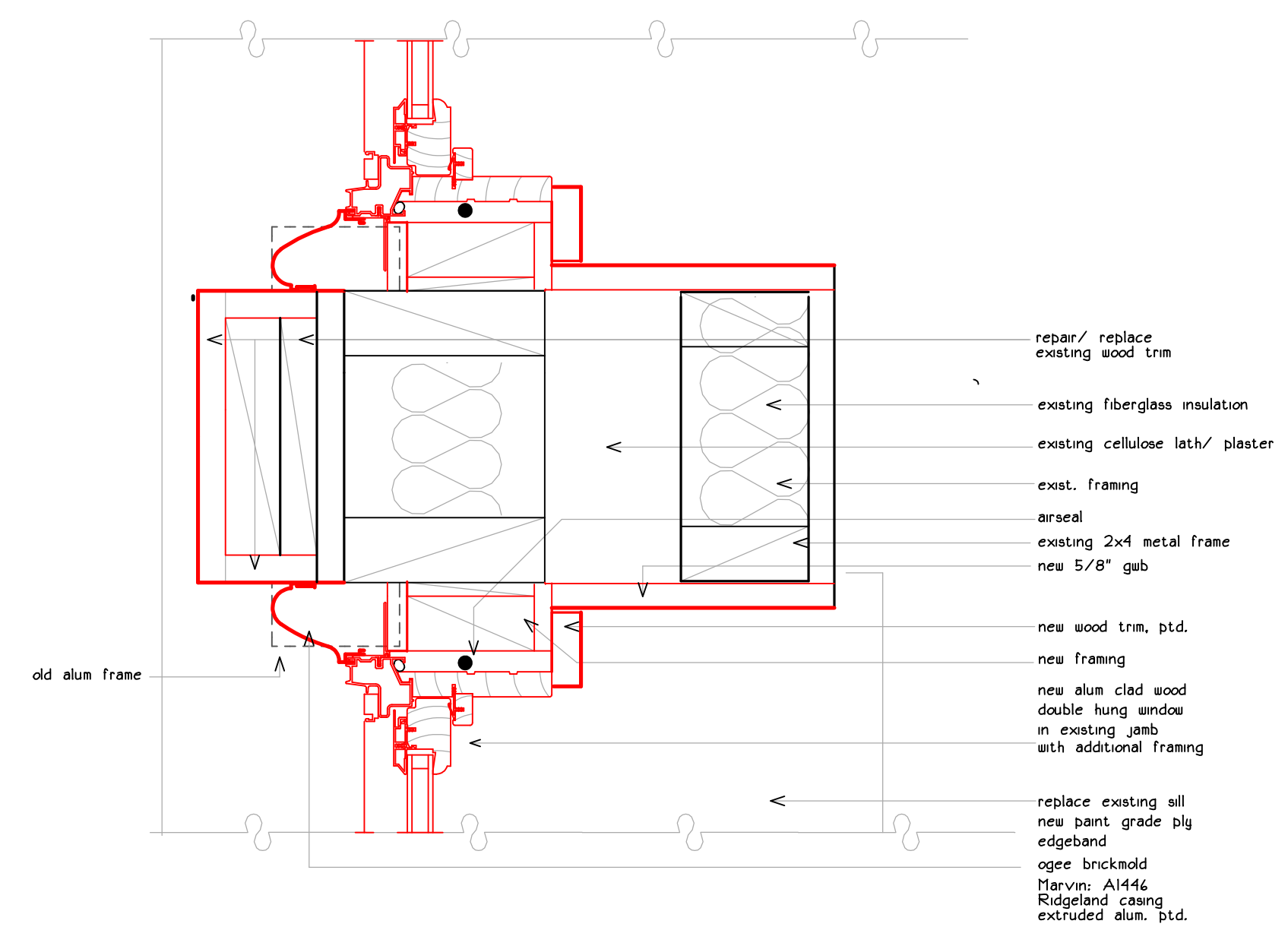
fax 207-774-0846



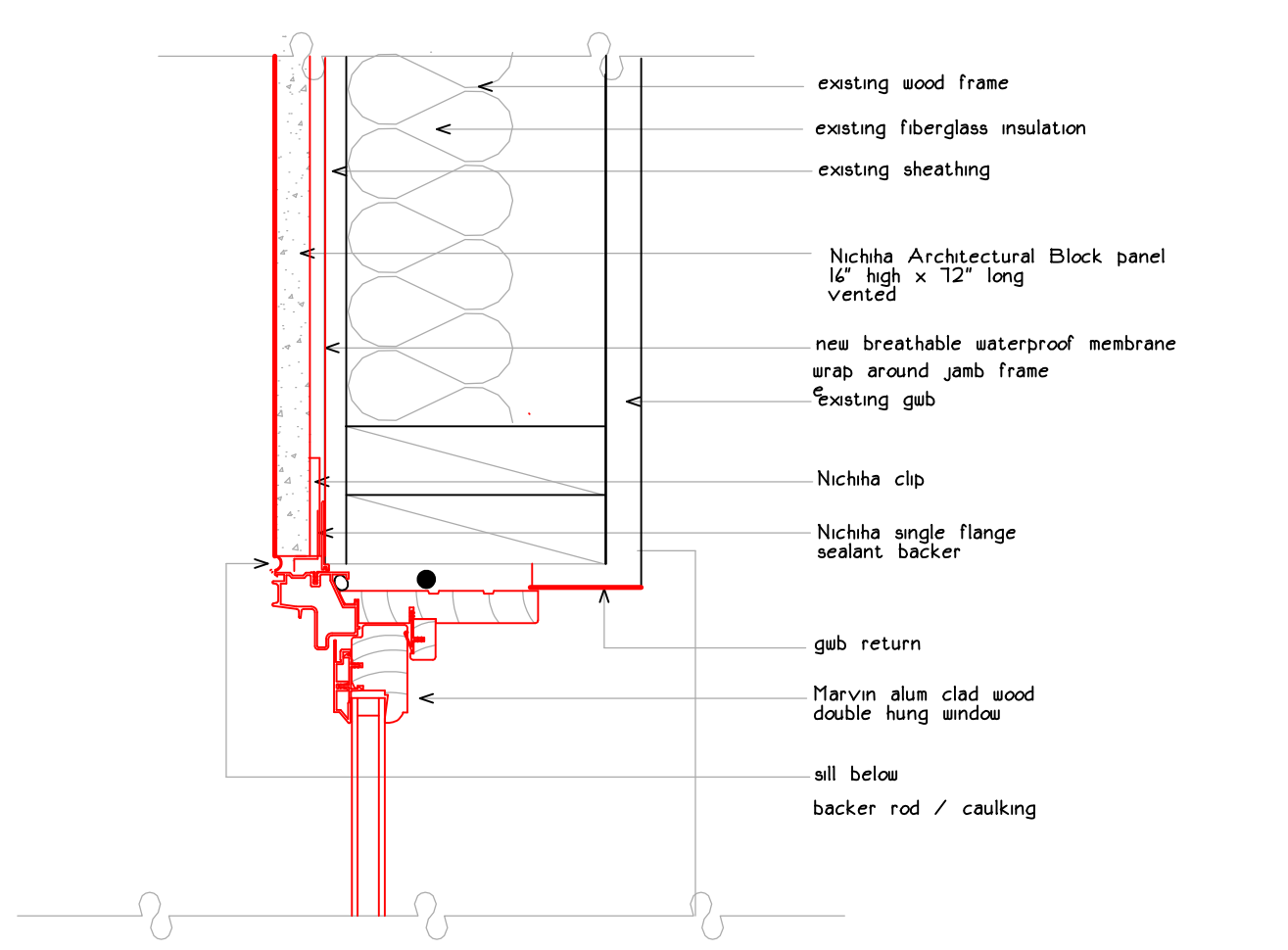
10 new head @ wood frame infill



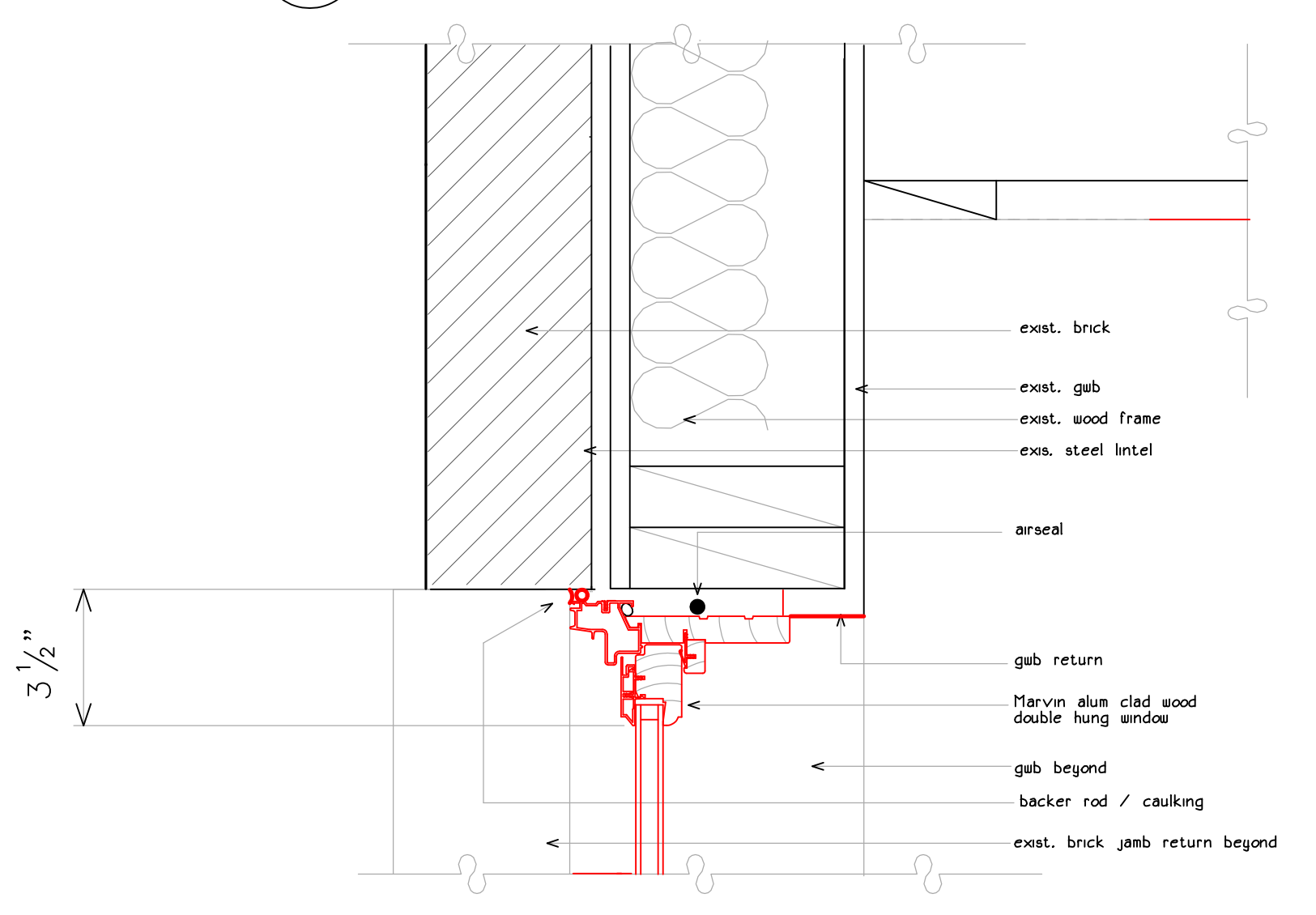
13 new head @ brick addition



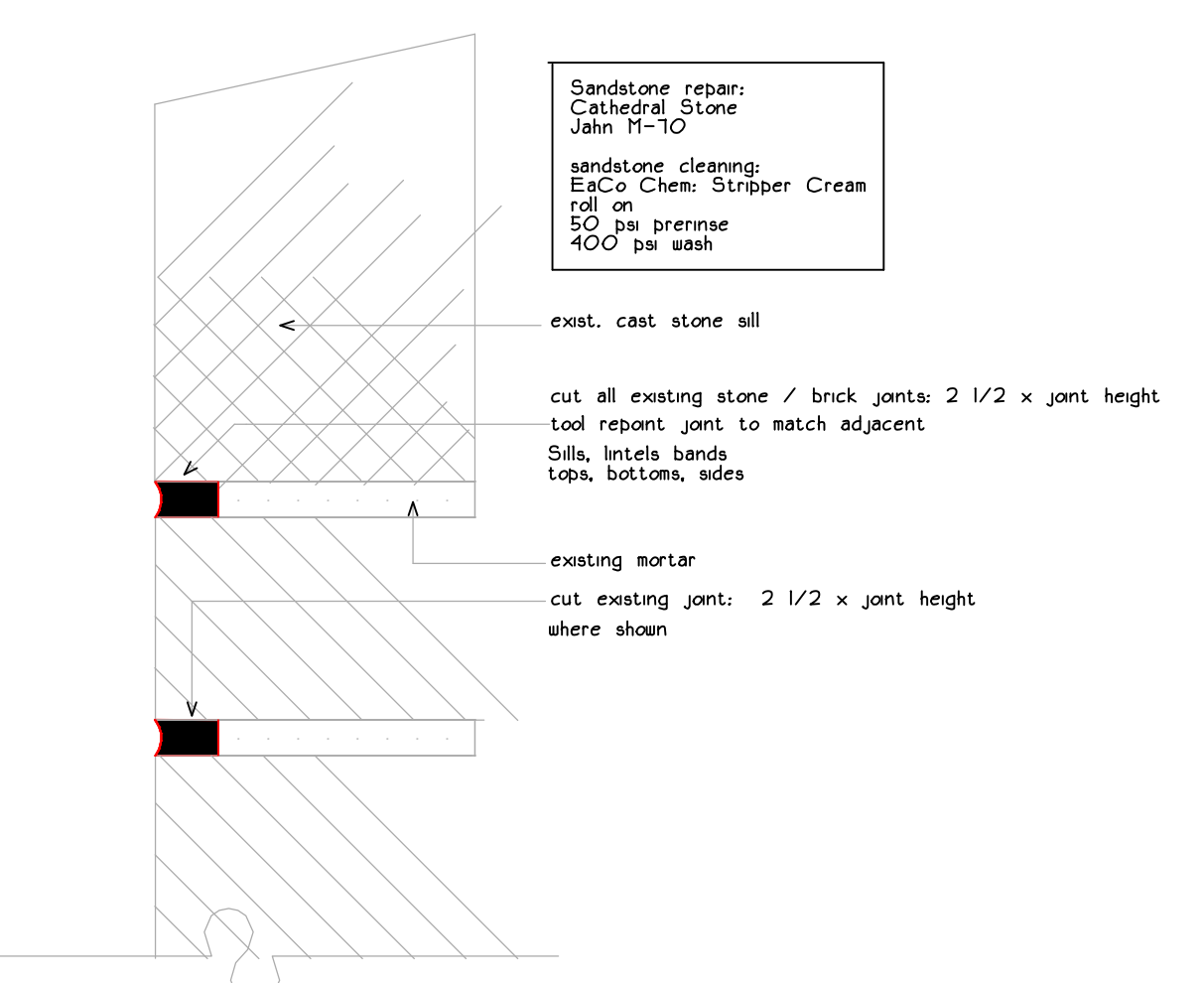
16 wood jamb between windows



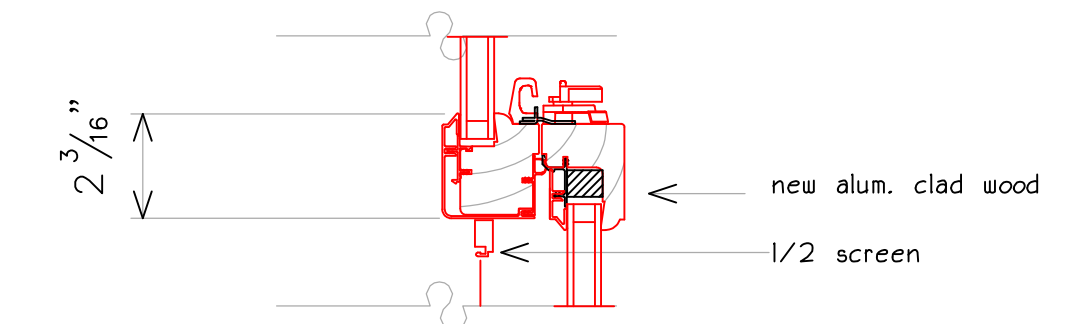
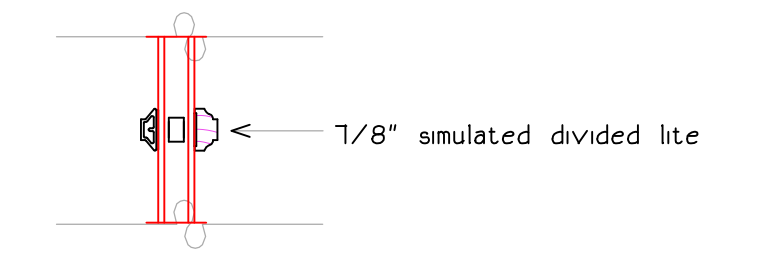
11 new jamb @ wood frame infill



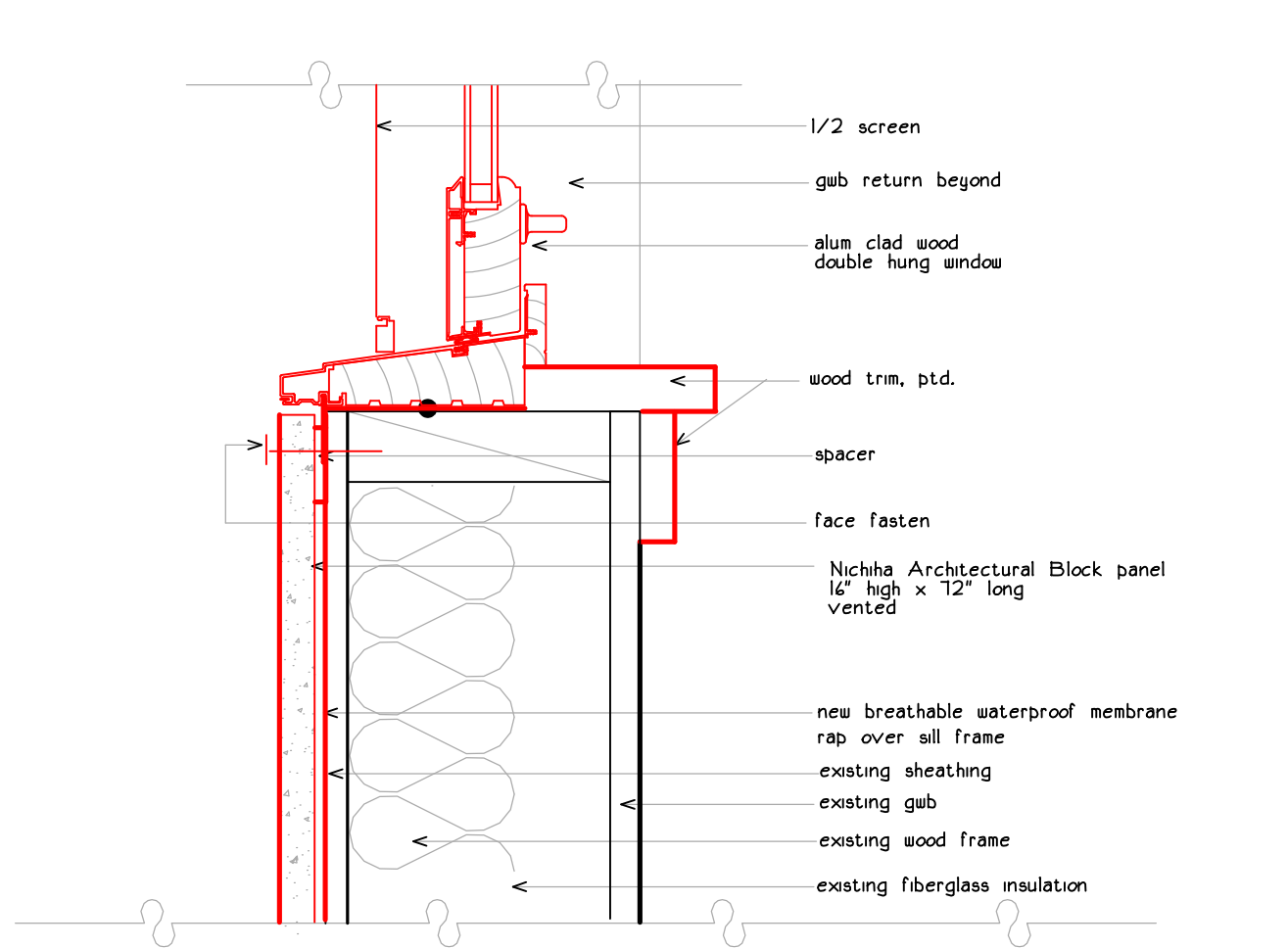
14 new jamb @ brick addition



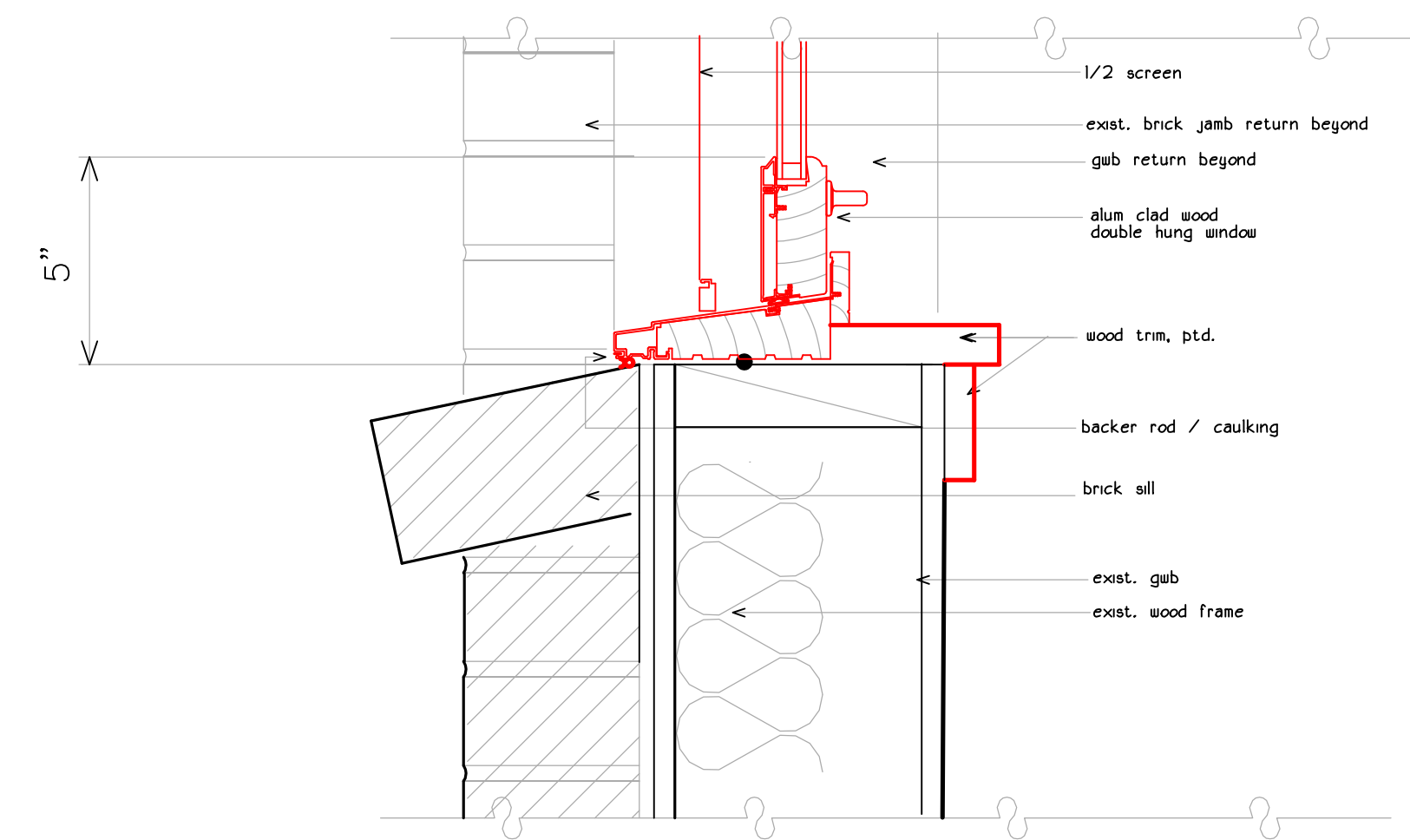
17 sandstone repoint/repair  
not to scale



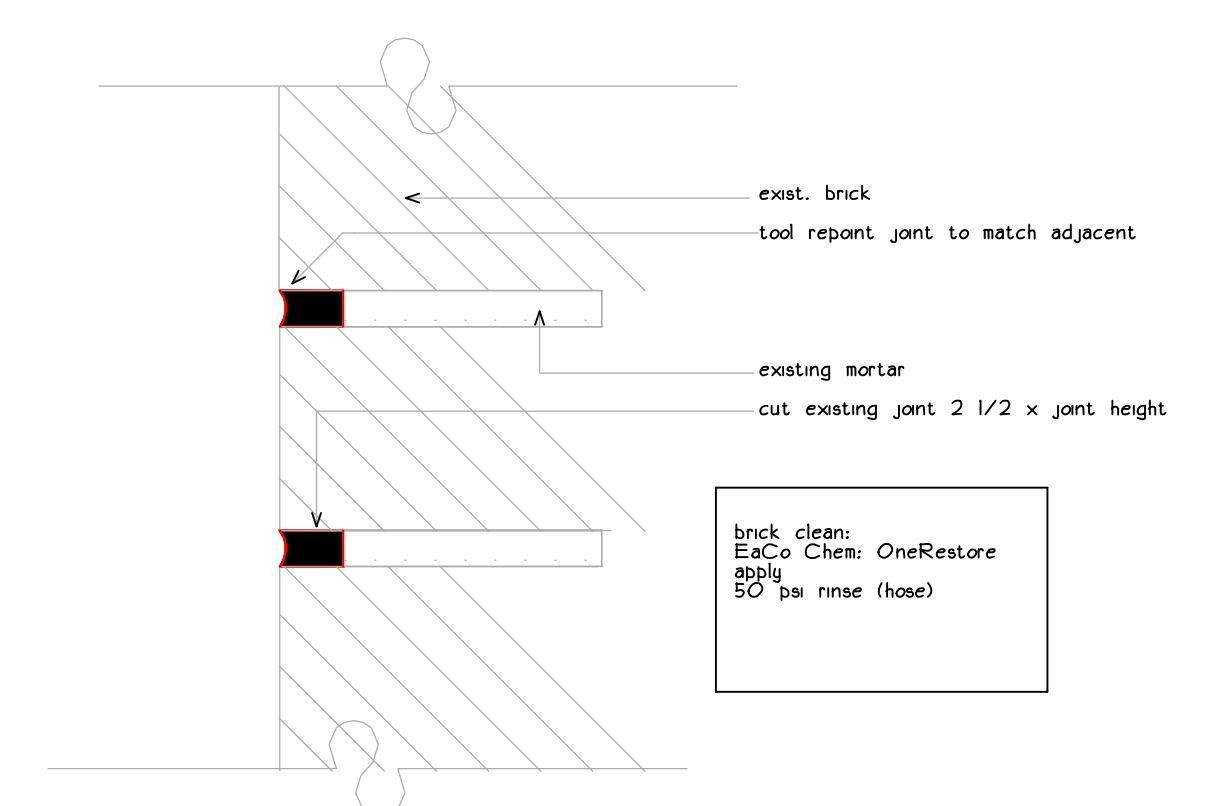
parting rail



12 new sill @ wood framed infill



15 new sill @ brick addition



18 typical repoint detail  
not to scale

revisions

date

january 17th, 2015

sheet title

**marvin alum clad double hung details**

**payson building brick addition infill wood addition**

scale

3" = 1'-0"

drawn by

RG

project number

butler payson

sheet number

PA5.2