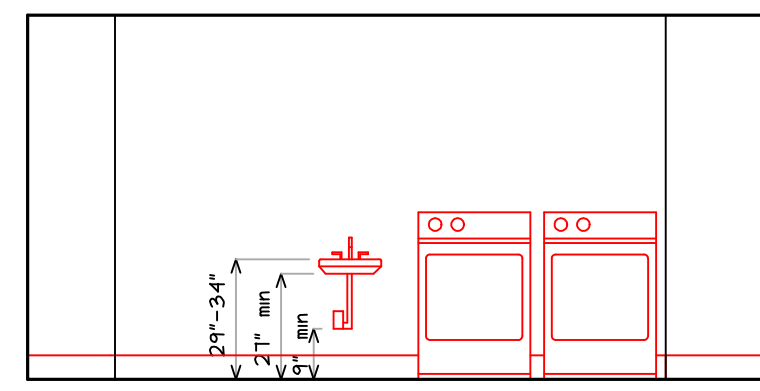
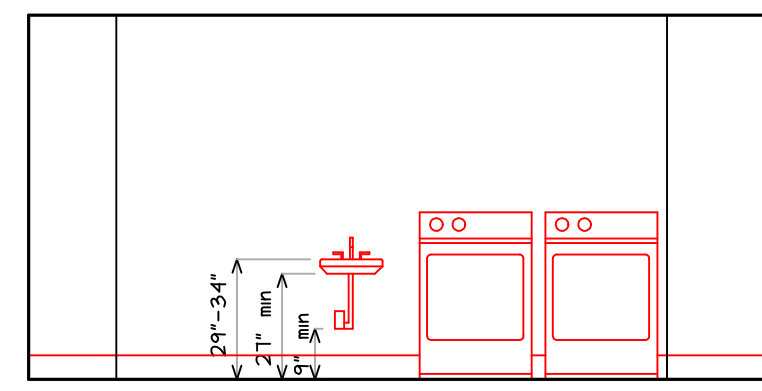


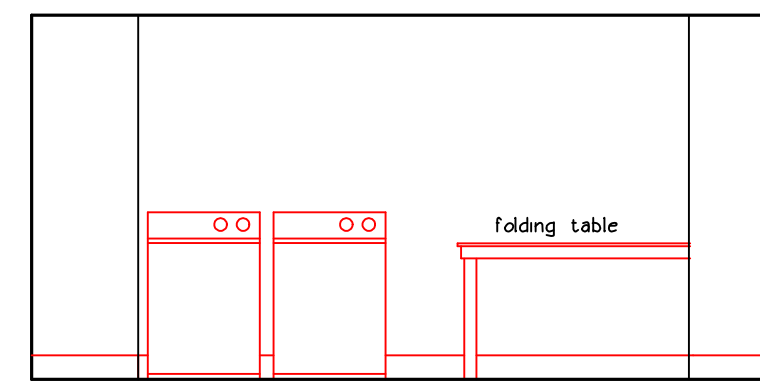
① entry



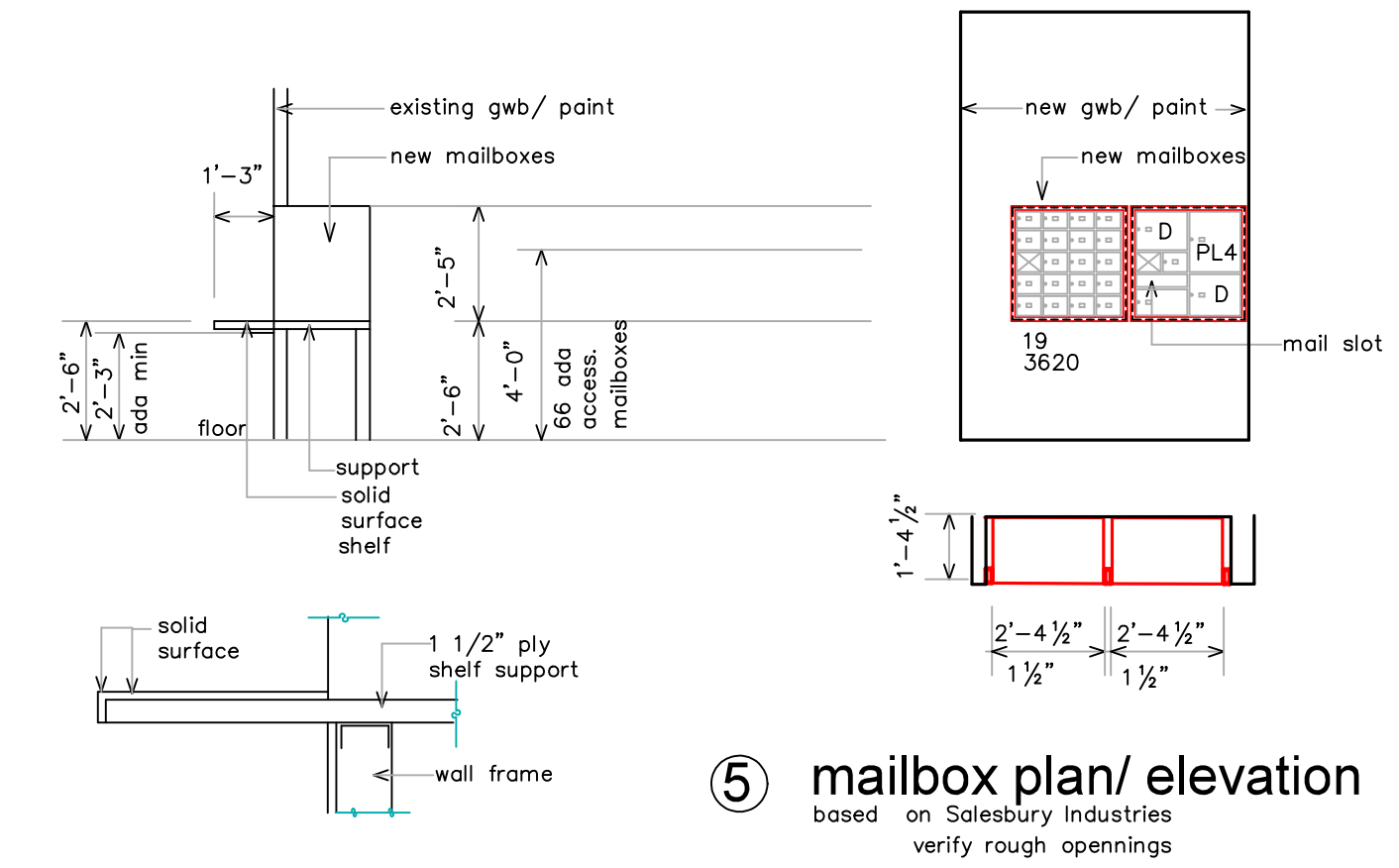
② laundry elevation



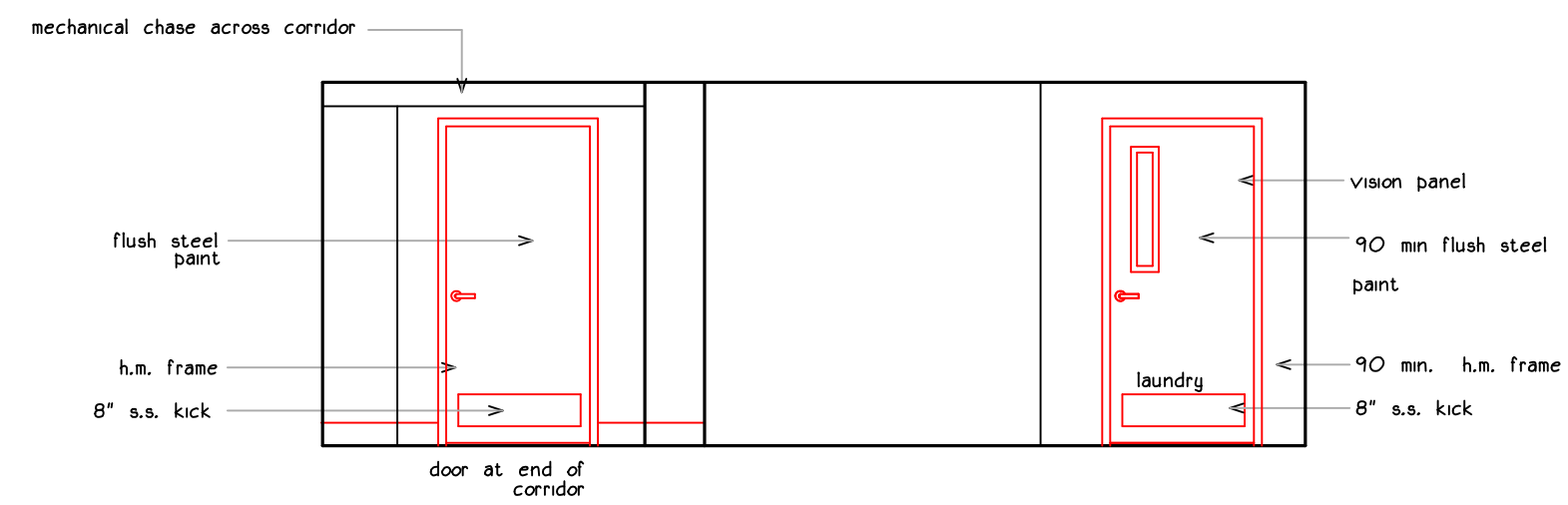
③ laundry elevation



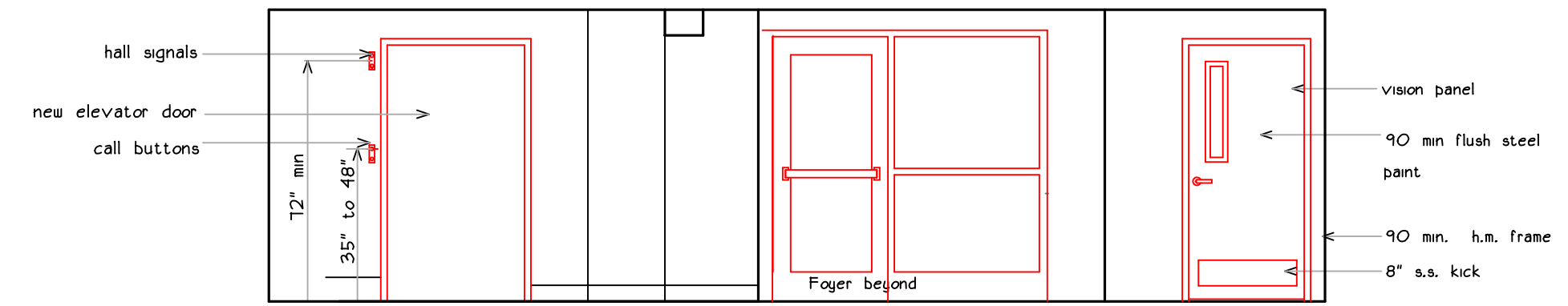
④



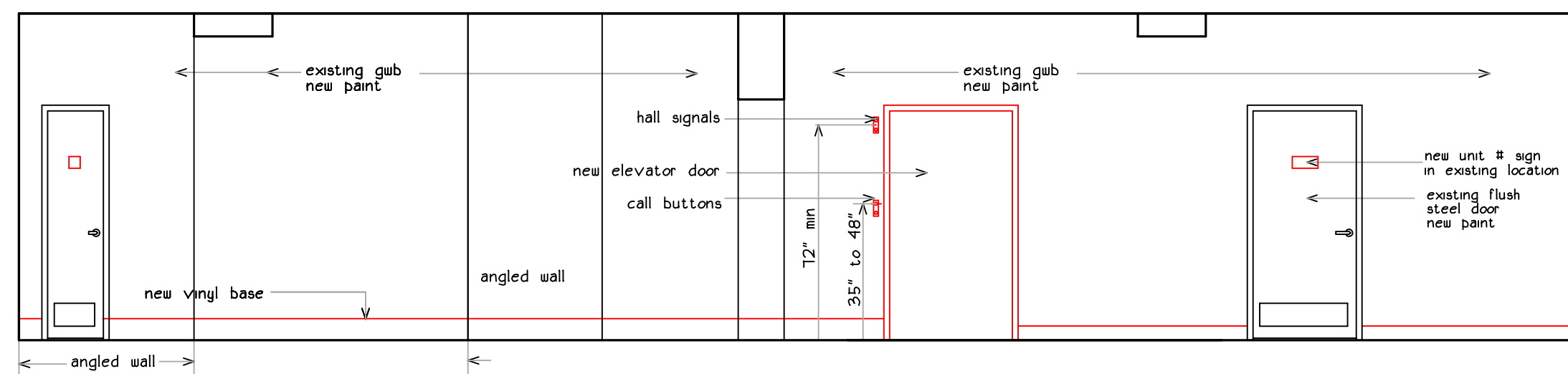
⑤ mailbox plan/ elevation
based on Salesbury Industries
verify rough openings



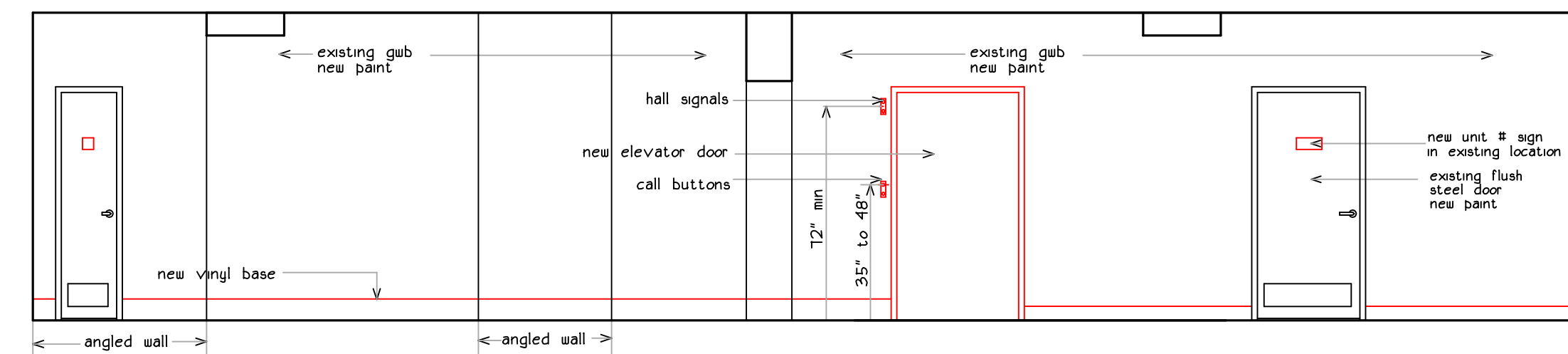
⑤ lobby elevation



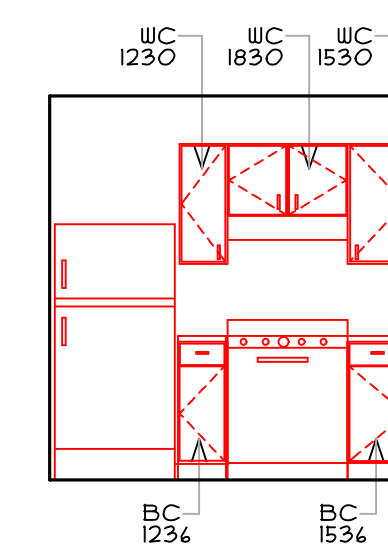
⑦ first floor corridor, typ.



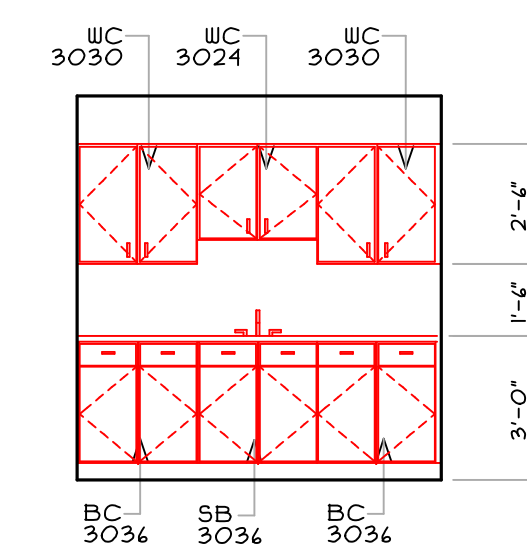
⑧ second floor corridor, typ.



⑨ third floor corridor, typ.



1 typical unit kitchen elevation



2 typical unit kitchen elevation

project name

Butler Payson
pine st.
state st.
portland, me.

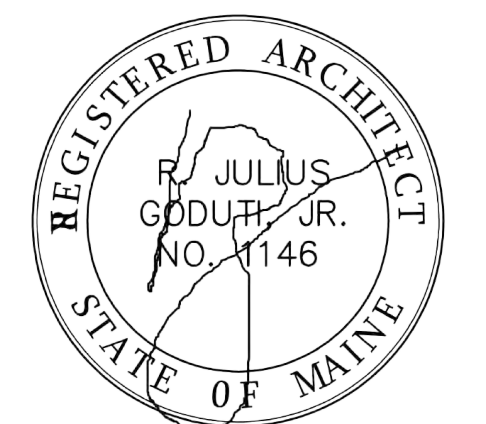
avesta housing

goduti/thomas architects

portland, maine 04101

ph. 207-775-3184

fax 207-774-0846

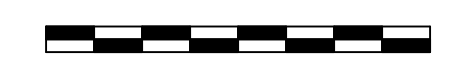


revisions

date
january 17th, 2015

sheet title

payson
interior elevations



scale
1/4"=1'-0"

drawn by
MS

project number
butpay

sheet number

PA4.1