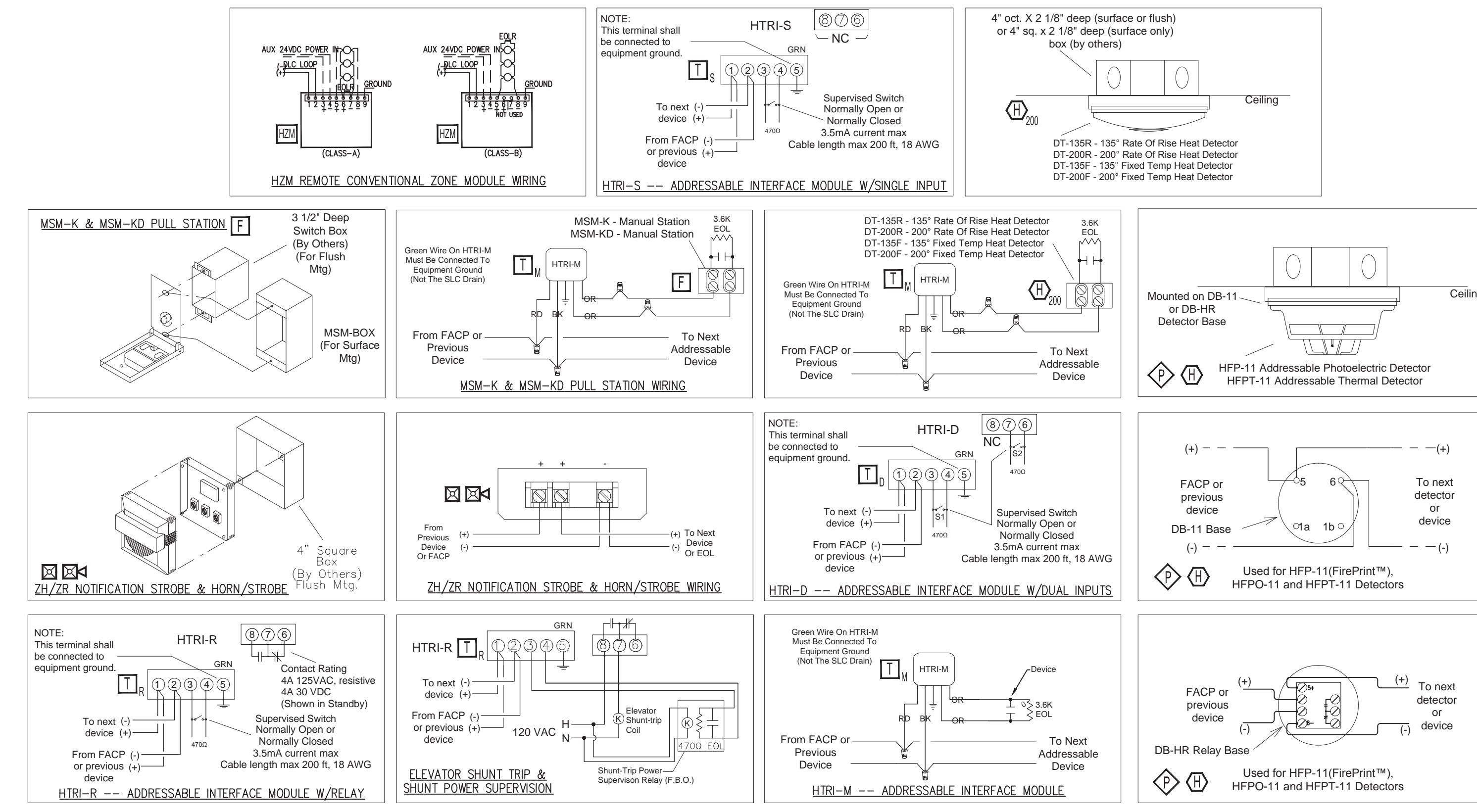


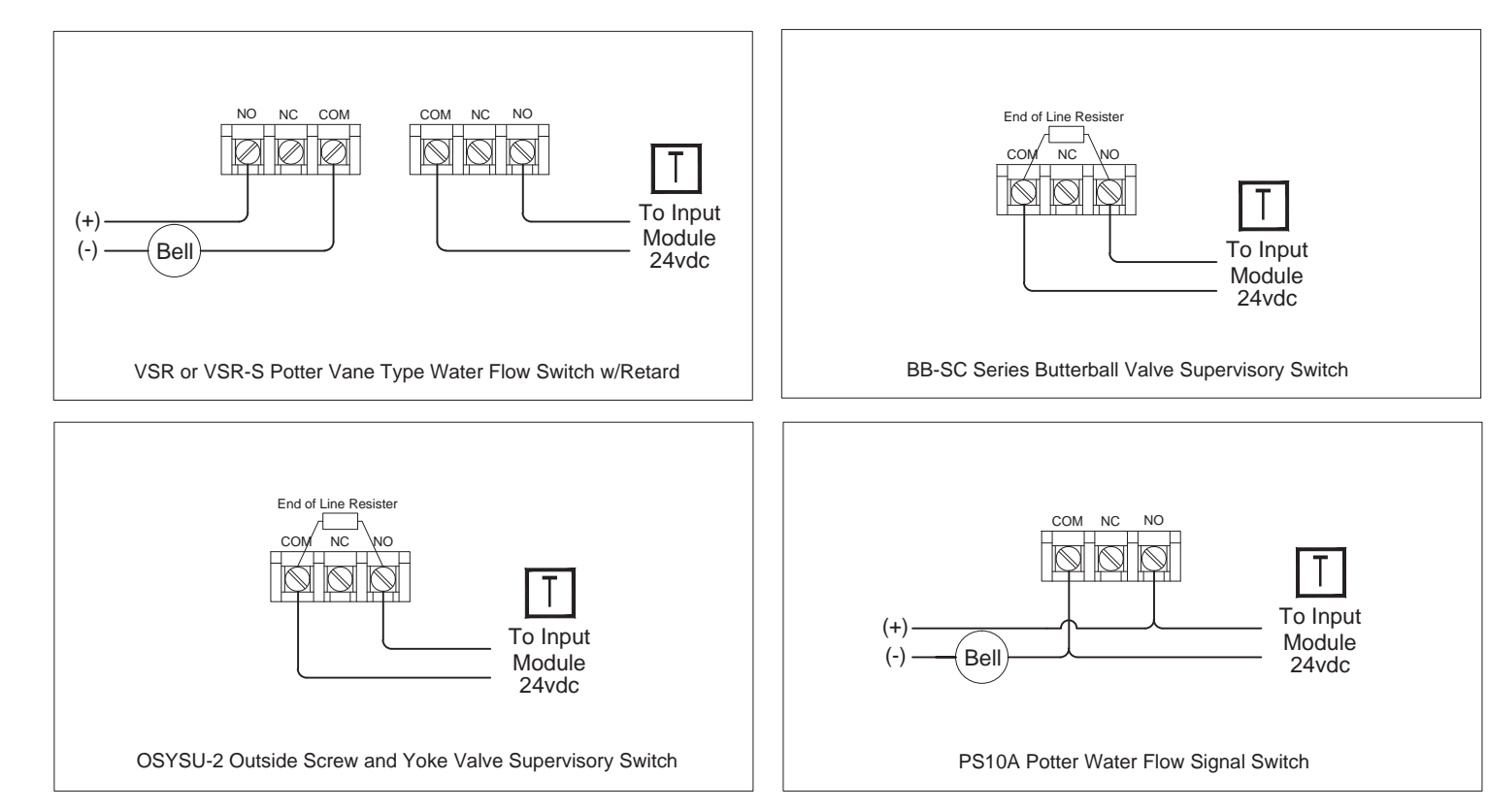
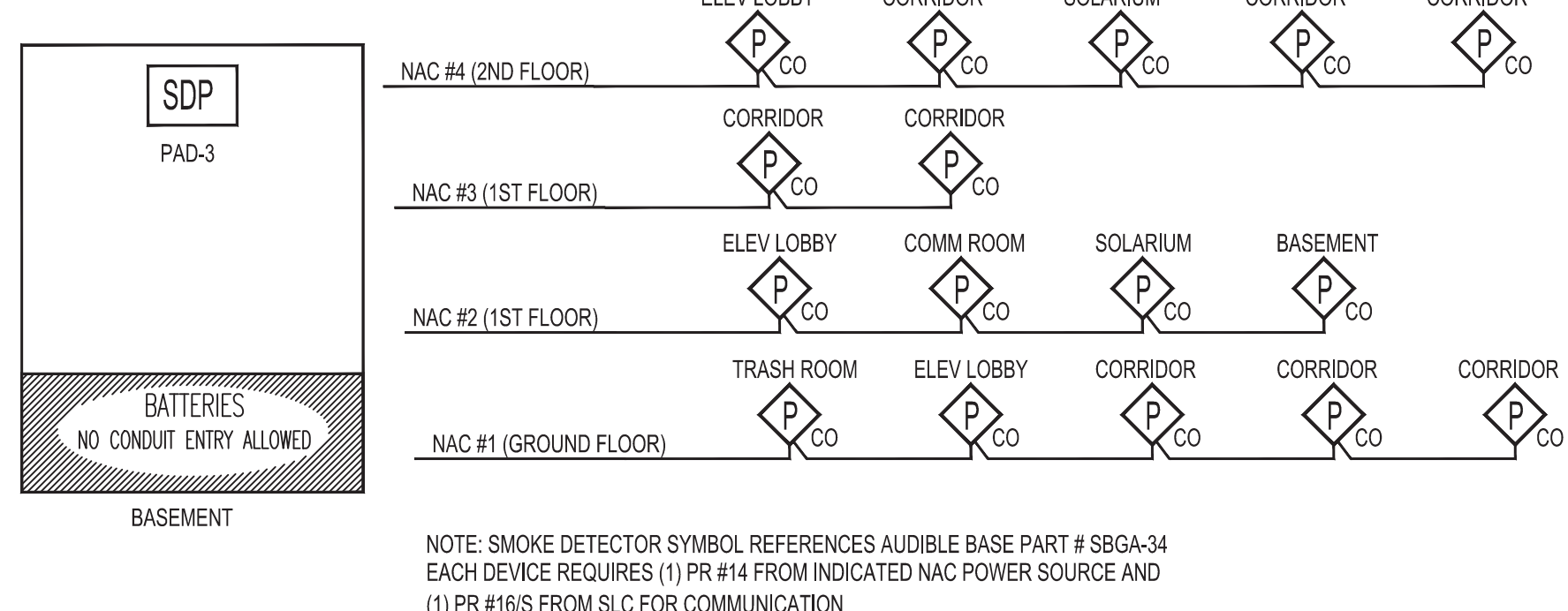
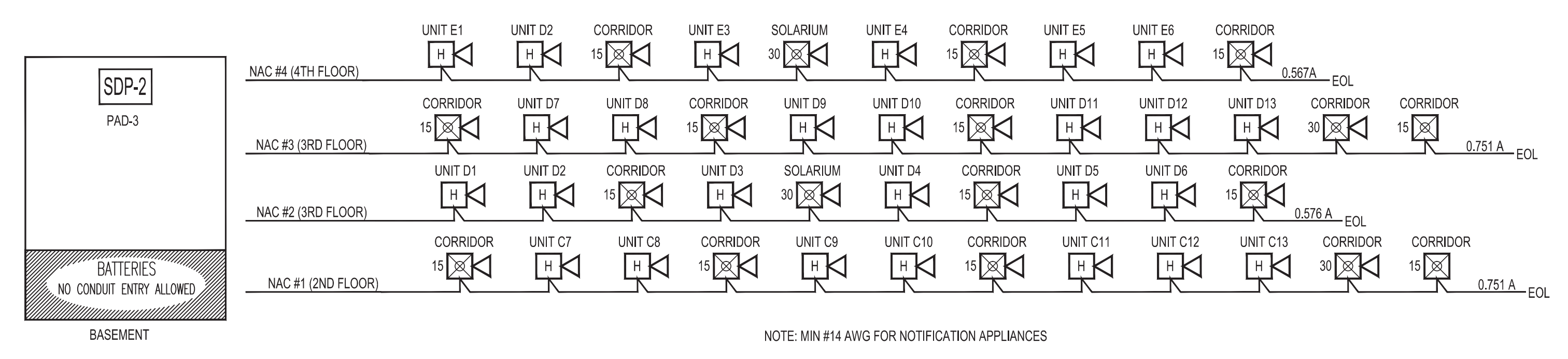
SYMBOL LEGEND

QUANT.	SYM.	DESCRIPTION	MODEL	BACK BOX
1	FACP	FIRE ALARM CONTROL PANEL	FS-250	ENCLOSURE
1	DCM	DIGITAL COMMUNICATOR	FS-DACT	FACP
1	AES	AES RADIO MASTERBOX		ENCLOSURE
31	◇	CEILING SMOKE DETECTOR/BASE	HFP-11/DB-11	OCTOGON BO
4	⊙	THERMAL DETECTOR/ BASE	HFPT-11/DB-11	OCTOGON BO
99	⊙	135 FT/ROR HEAT DETECTOR/BASE	DT-135R	OCTOGON BO
18	□	MANUAL PULL STATION	MSM-KD/HTRI-M	3.5" DEEP SINGLE GANC
44	□	SINGLE INPUT MONITOR MODULE	HTRI-S	4" SQUARE B
1	□	DUAL INPUT MONITOR MODULE	HTRI-D	4" SQUARE B
5	□	SINGLE INPUT MONITOR MODULE W/ RELAY	HTRI-R	4" SQUARE B
3	⊠	FIRE ALARM MULTI CANDELLA STROBE	ZR-MC-R	4" SQUARE
41	⊠	FIRE ALARM MULTI CANDELLA HORN/STROBE	ZH-MC-R	4" SQUARE
44	⊠	FIRE ALARM HORN	ZH-R	4" SQUARE
30	⊙	CARBON MONOXIDE DETECTOR/AUDIBLE BASE	OOHC921/SBGA-34	OCTOGON BO



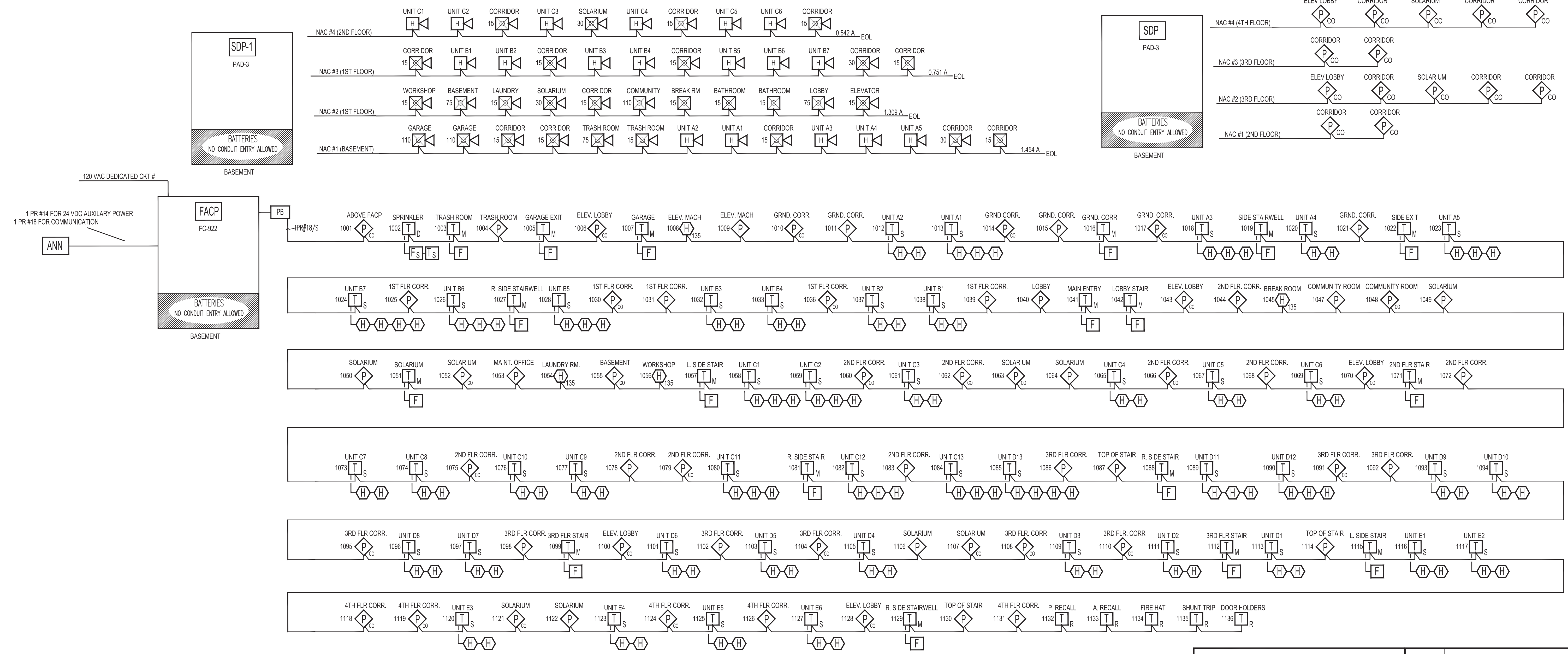
DEVICE MOUNTING & WIRING DETAIL

SCALE: N.T.S.



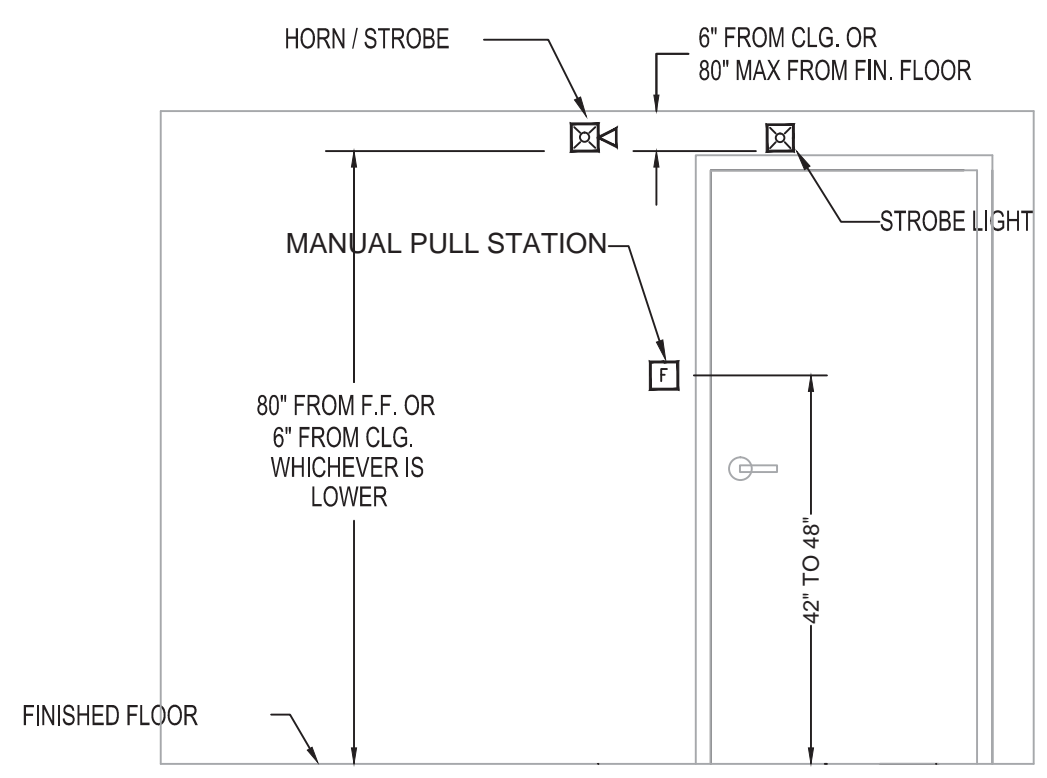
SPRINKLER DEVICE WIRING DETAIL

SCALE: N.T.S.



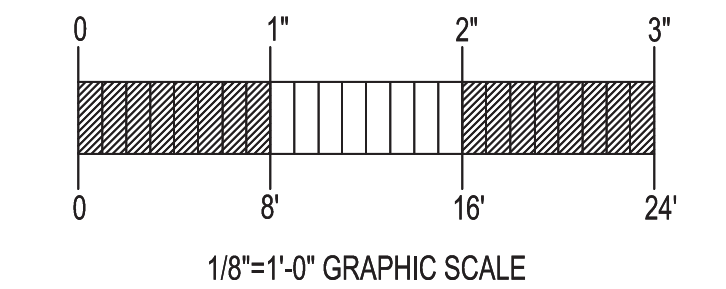
FIRE ALARM RISER DETAIL

SCALE: N.T.S.



DEVICE ELEVATION DETAIL

NOT TO SCALE



GENERAL NOTES	DATE	REVISIONS	REQUIRED APPROVALS	FIRE ALARM SYST
- SCOPE OF WORK: INSTALL NEW ADDRESSABLE FIRE ALARM SYSTEM. ALL INSTALLATION PRACTICES SHALL COMPLY WITH NFPA 70, 72			OWNER	PLANS & DETAIL
- PHASE 1: INSTALL NEW CONTROL PANEL			PORTLAND FIRE DEPARTMENT	DWG. NO. 4 OF 4
- PHASE 2: INSTALL NEW DEVICES			DRAWN BY CRM	JOB NUMBER
- PHASE 2 TO BEGIN IMMEDIATELY FOLLOWING PHASE 1			CHECKED BY MLT	SCALE AS SHOWN
- HORN LOCATIONS IN DWELLING UNITS ARE FOR REFERENCE ONLY. AUDIBILITY WILL BE FIELD TESTED AND LOCATIONS MAY CHANGE TO ACHIEVE 75 DB AT THE PILLOW AND 15 DB ABOVE AMBIENT SOUND THROUGHOUT UNIT			CONTRACTOR LICENSE #	DATE 1/23/13

LONGFELLOW COMMONS
206 STATE ST.
PORTLAND, ME

CONTRACT WITH: WESTON ASSOCIATES MGMT

EASTERN FIRE SERVICES, INC.
AUBURN/LEWISTON INDUSTRIAL AIRPARK, AUBURN, MAINE 04270