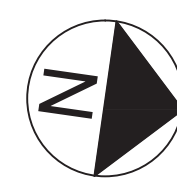
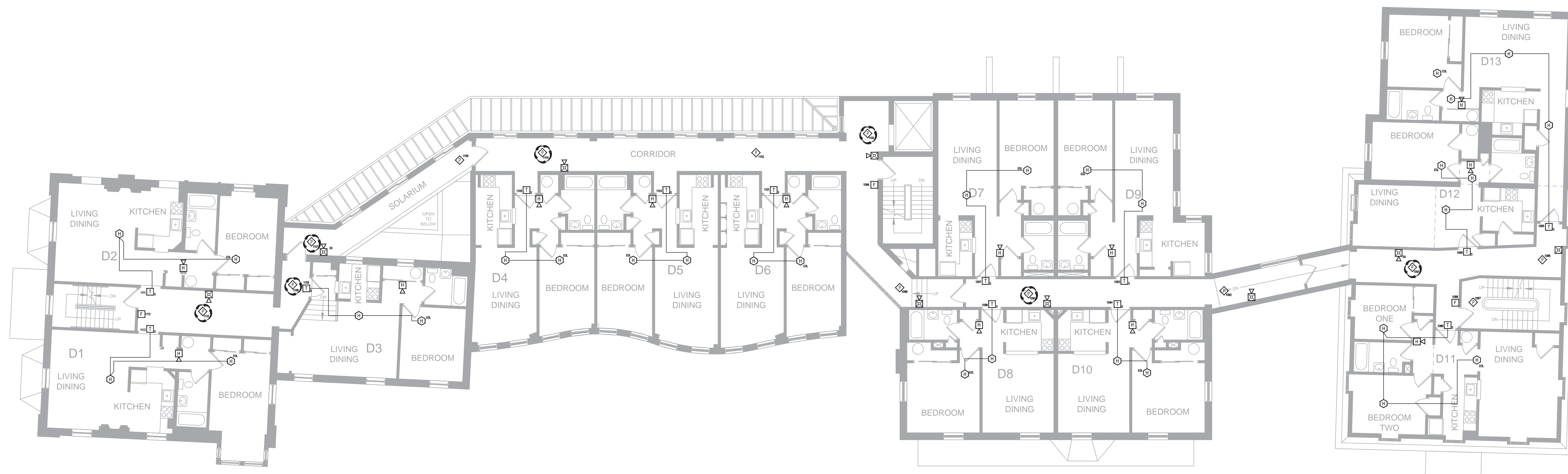


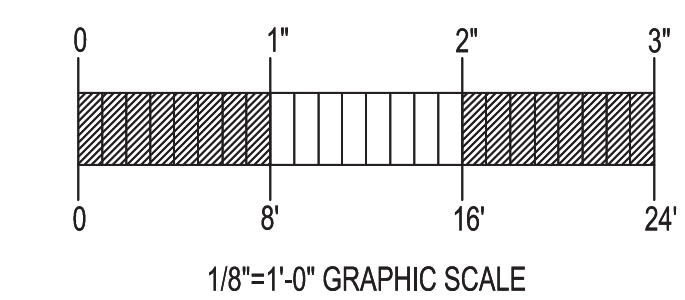
FIRE ALARM SYSTEM LAYOUT – SECOND FLOOR

SCALE: 1/8"=1'



FIRE ALARM SYSTEM LAYOUT – THIRD FLOOR

SCALE: 1/8"=1'



GENERAL NOTES	DATE	REVISIONS	REQUIRED APPROVALS	LONGFELLOW COMMONS 206 STATE ST. PORTLAND, ME CONTRACT WITH: WESTON ASSOCIATES MGMT EASTERN FIRE SERVICES, INC. AUBURN/LEWISTON INDUSTRIAL AIRPARK, AUBURN, MAINE 04210	FIRE ALARM SYST
- SCOPE OF WORK: INSTALL NEW ADDRESSABLE FIRE ALARM SYSTEM. ALL INSTALLATION PRACTICES SHALL COMPLY WITH NFPA 70, 72			OWNER PORTLAND FIRE DEPARTMENT		PLANS & DETAIL
- PHASE 1: INSTALL NEW CONTROL PANEL			DRAWN BY CRM		DWG. NO. 2 OF 4
- PHASE 2: INSTALL NEW DEVICES			CHECKED BY MLT		JOB NUMBER
- PHASE 2 TO BEGIN IMMEDIATELY FOLLOWING PHASE 1			CONTRACTOR LICENSE #	SCALE AS SHOWN	
- HORN LOCATIONS IN DWELLING UNITS ARE FOR REFERENCE ONLY. AUDIBILITY WILL BE FIELD TESTED AND LOCATIONS MAY CHANGE TO ACHIEVE 75 DB AT THE PILLOW AND 15 DB ABOVE AMBIENT SOUND THROUGHOUT UNIT				DATE 1/23/13	