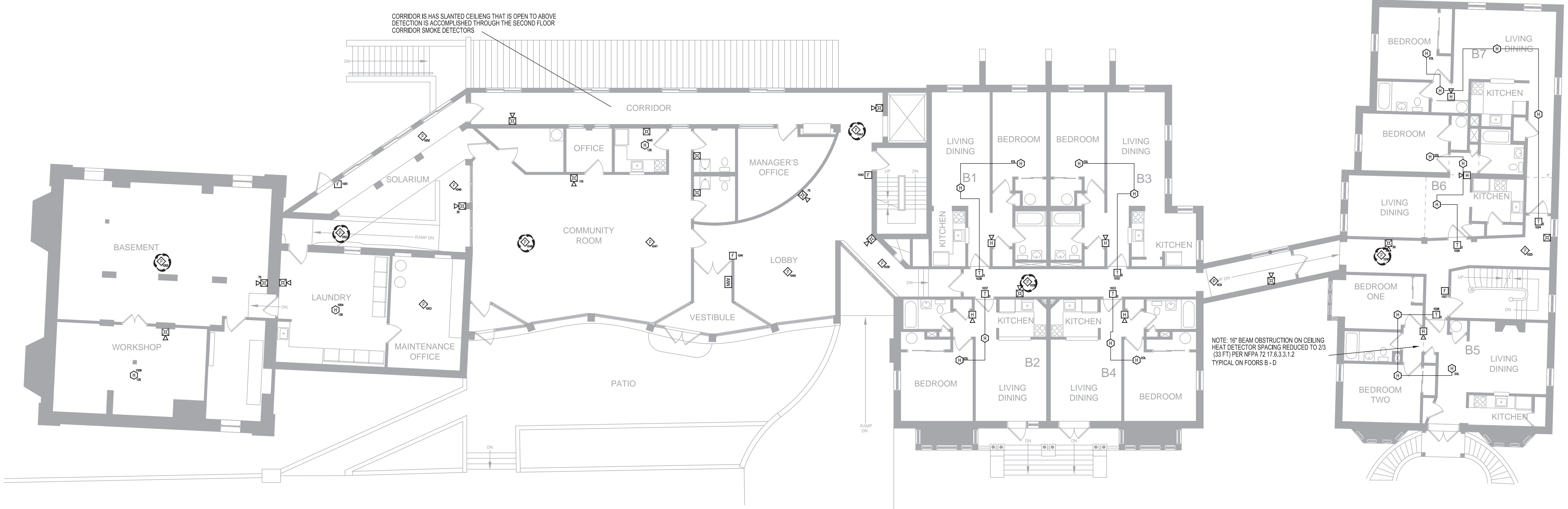
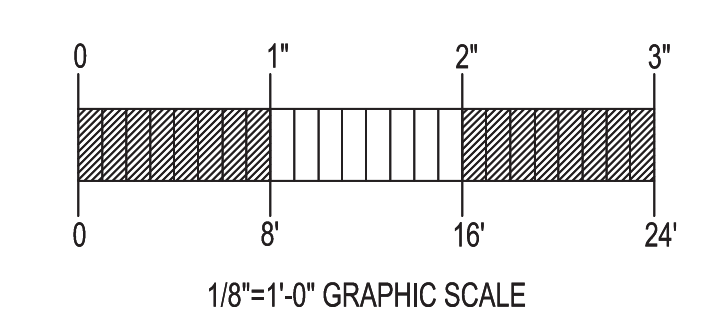


FIRE ALARM SYSTEM LAYOUT – GROUND FLOOR  
SCALE: 1/8"=1'



FIRE ALARM SYSTEM LAYOUT – FIRST FLOOR  
SCALE: 1/8"=1'



GENERAL NOTES	DATE	REVISIONS	REQUIRED APPROVALS	OWNER	FIRE ALARM SYST	
- SCOPE OF WORK: INSTALL NEW ADDRESSABLE FIRE ALARM SYSTEM. ALL INSTALLATION PRACTICES SHALL COMPLY WITH NFPA 70, 72 - PHASE 1: INSTALL NEW CONTROL PANEL - PHASE 2: INSTALL NEW DEVICES - PHASE 2 TO BEGIN IMMEDIATELY FOLLOWING PHASE 1 - HORN LOCATIONS IN DWELLING UNITS ARE FOR REFERENCE ONLY. AUDIBILITY WILL BE FIELD TESTED AND LOCATIONS MAY CHANGE TO ACHIEVE 75 DB AT THE PILLOW AND 15 DB ABOVE AMBIENT SOUND THROUGHOUT UNIT				LONGFELLOW COMMONS 206 STATE ST. PORTLAND, ME	PLANS & DETAIL	
				PORTLAND FIRE DEPARTMENT	DWG. NO. 1 OF 4	
				DRAWN BY MLT	CONTRACT WITH: WESTON ASSOCIATES MGMT	JOB NUMBER
				CHECKED BY BWB	<b>EASTERN FIRE SERVICES, INC.</b> AUBURN/LEWISTON INDUSTRIAL AIRPARK, AUBURN, MAINE 04210	SCALE AS SHOWN
			CONTRACTOR LICENSE #		DATE 1/23/13	