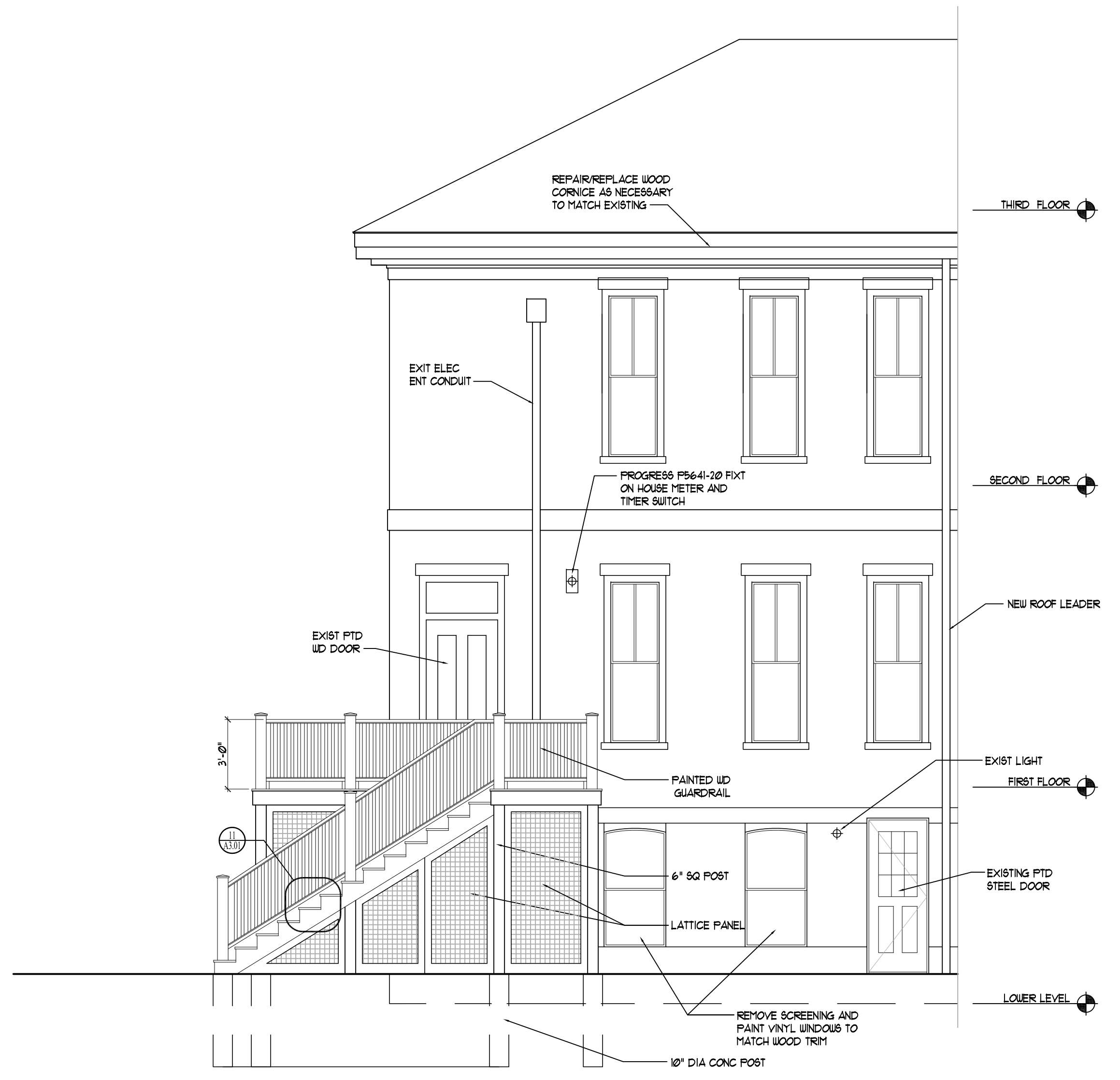


1 | NORTH ELEVATION
SCALE: 1/4"=1'-0"



2 | EAST ELEVATION
SCALE: 1/4"=1'-0"

	<p>Prepared For: Congress Place West, LLC C/O 10 Dana Street, Suite 400 Portland, ME 04101 Attn: Thomas W. Moulton</p>
<p>Consulting Engineer: Structural Integrity</p>	<p>77 Oak Street Portland, Maine 04101 (207) 772-6022 Fax (207) 772-4056</p>
<p>Architect: ARCHETYPE architects</p>	<p>48 Union Wharf Portland, Maine 04101 (207) 772-6022 Fax (207) 772-4056</p>
<p>Project: Condominium Plans Longfellow Place Condominium</p>	<p>727 CONGRESS STREET PORTLAND, CUMBERLAND COUNTY, MAINE</p>
<p>Revisions:</p>	
<p>Date: 6 APRIL 2012</p>	<p>Scale: 1/4" = 1'-0"</p>
<p>ELEVATIONS</p>	
<p>A2.01</p>	