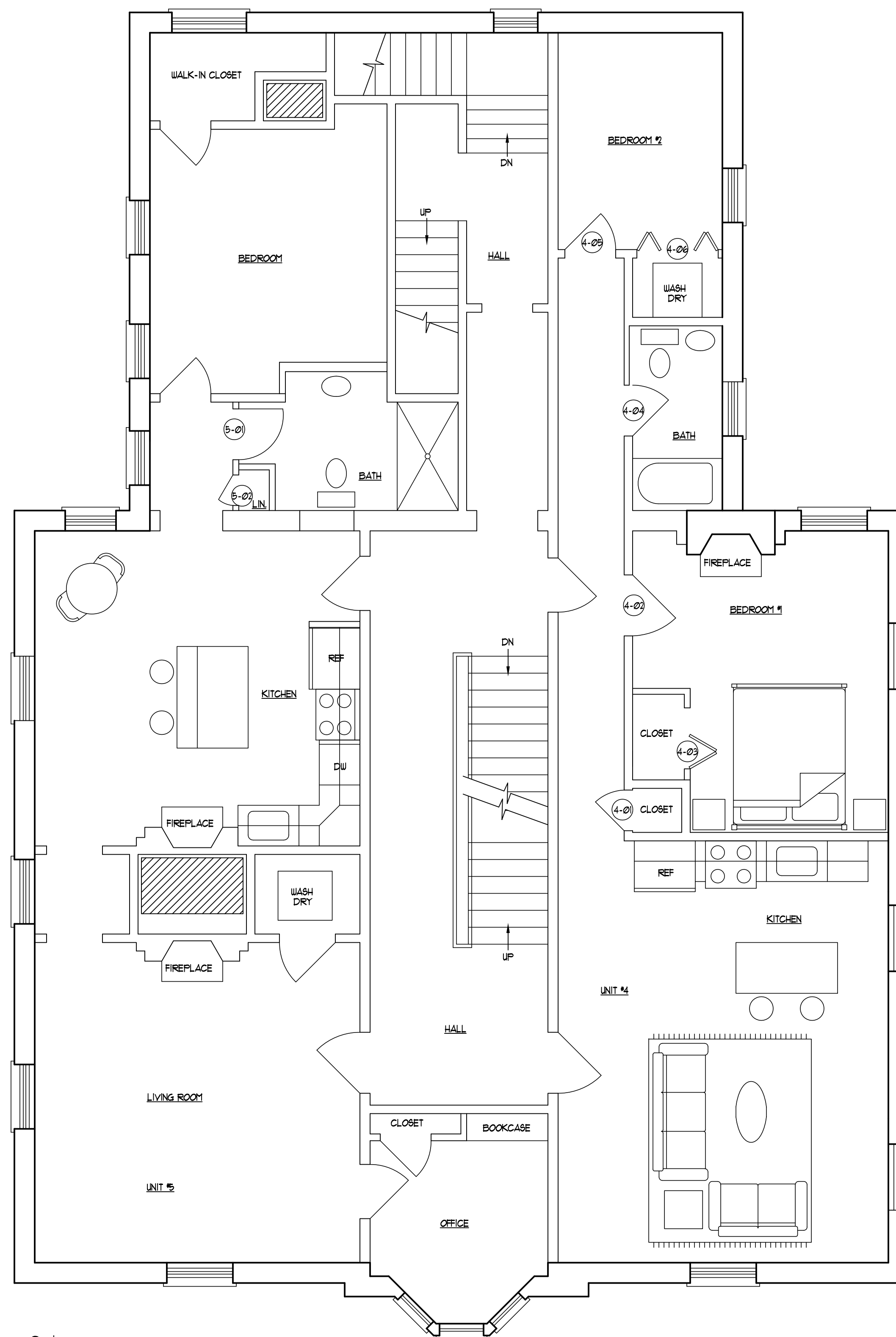
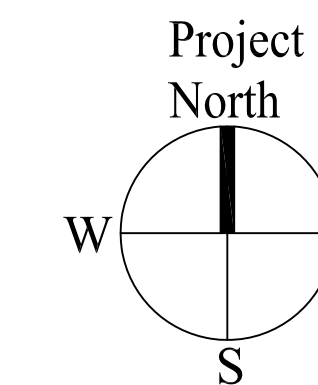


3 | THIRD FLOOR PLAN  
SCALE: 1/4"=1'-0"



2 | SECOND FLOOR PLAN  
SCALE: 1/4"=1'-0"



Date: 6 APRIL 2012	Scale: 1/4" = 1'-0"	Revisions:	Project: Longfellow Place Condominiums 727 CONGRESS STREET PORTLAND, MAINE	Architect: <b>ARCHETYPE</b> architects 48 Union Wharf Portland, Maine 04101 (207) 772-6022 Fax (207) 772-4056	Consulting Engineer: <b>Structural Integrity</b> 77 Oak Street Portland, Maine 04101 (207) 772-6022 Fax (207) 772-4056	Prepared For:
						Congress Place West, LLC Principal: Thomas W. Moulton Portland, Maine
<b>FLOOR PLANS</b>						
<b>A1.02</b>						