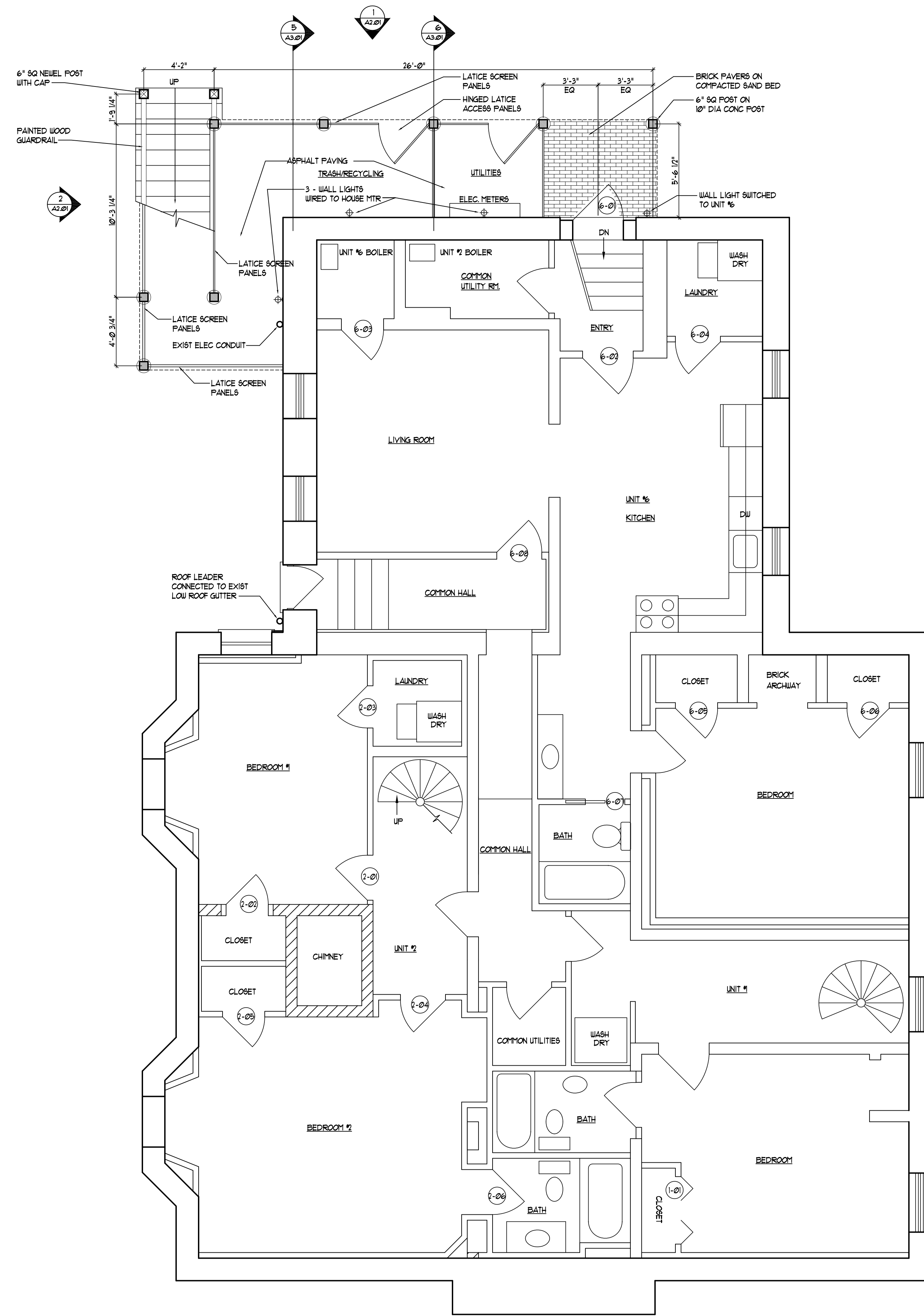
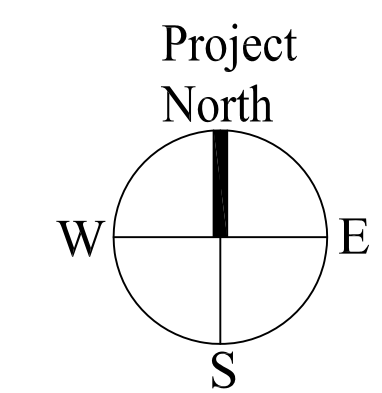


1 | FIRST FLOOR PLAN
SCALE: 1/4"=1'-0"



0 | LOWER LEVEL FLOOR PLAN
SCALE: 1/4"=1'-0"



| |
|---|
| Prepared For: Congress Place West, LLC C/O 10 Dana Street, Suite 400 Portland, ME 04101 Attn: Thomas W. Moulton |
| Consulting Engineer: Structural Integrity 77 Oak Street Portland, Maine 04101 (207) 772-6022 Fax (207) 772-4056 |
| Architect: ARCHETYPE architects 48 Union Wharf Portland, Maine 04101 (207) 772-6022 Fax (207) 772-4056 |
| Project: Condominium Plans Longfellow Place Condominium 227 CONGRESS STREET PORTLAND, CUMBERLAND COUNTY, MAINE |
| Revisions: |
| Date: 6 APRIL 2012 |
| Scale: 1/4" = 1'-0" |
| FLOOR PLANS |
| A1.01 |