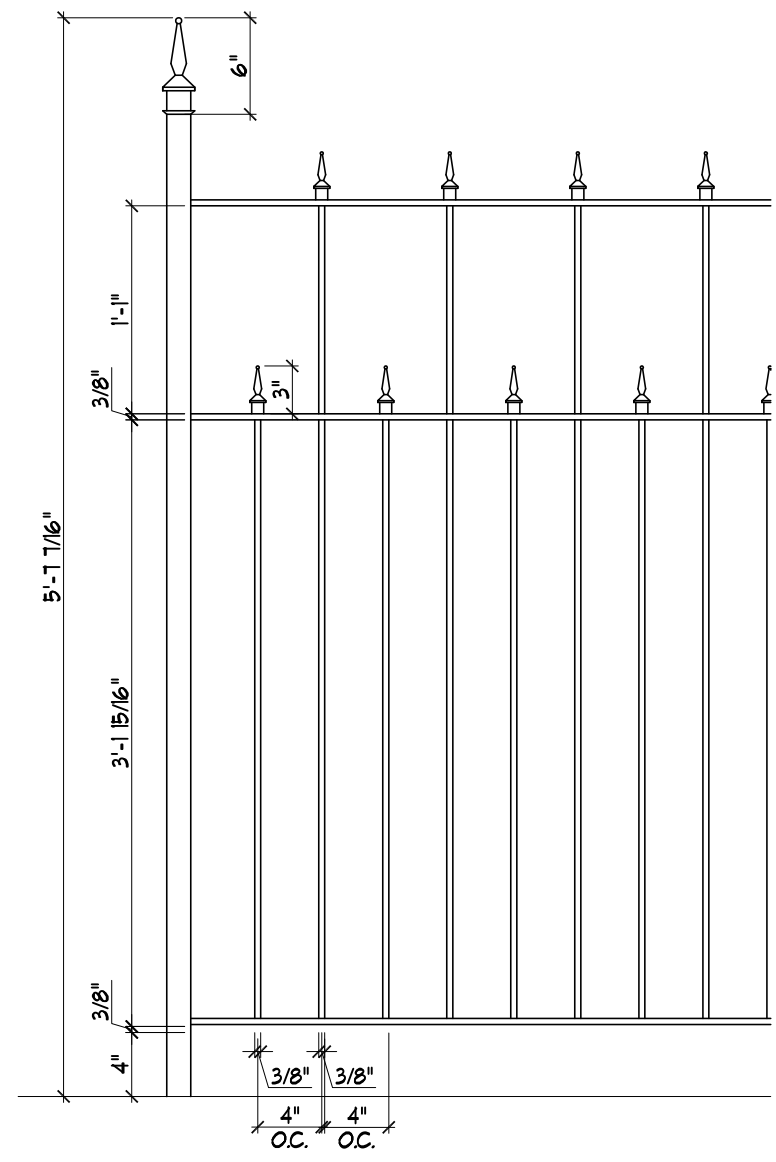
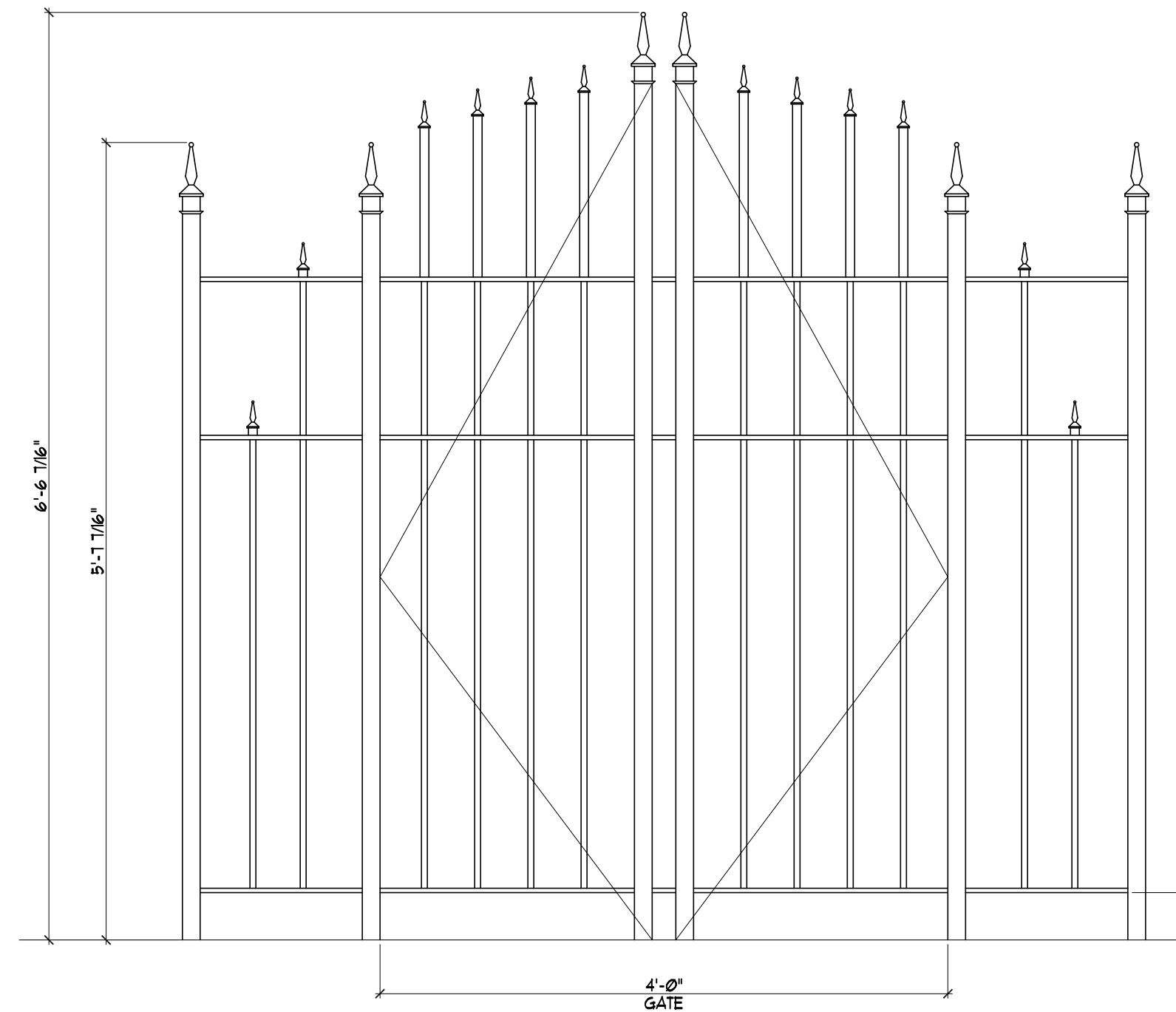


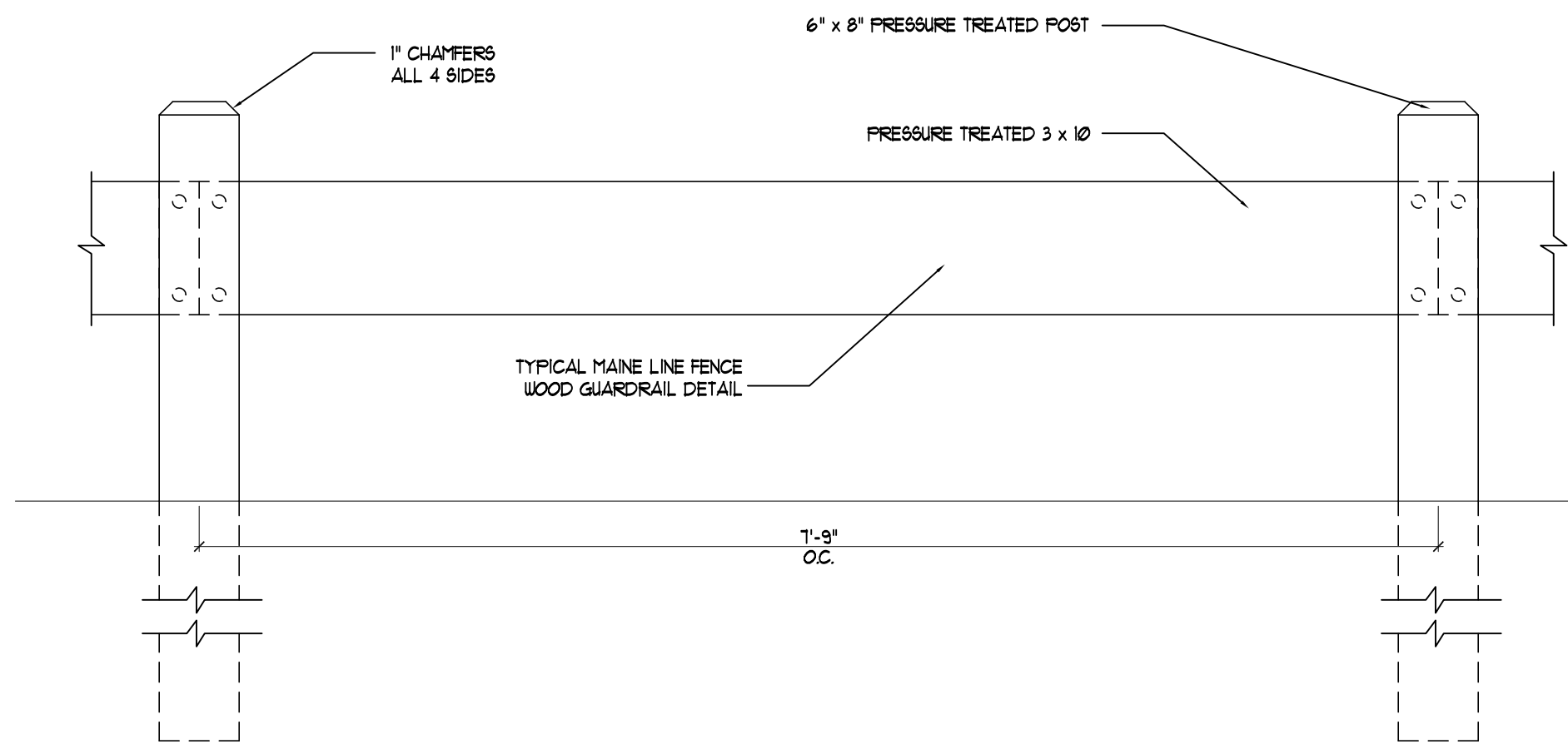
2 EXISTING FENCE
SCALE: 1" = 1'-0"



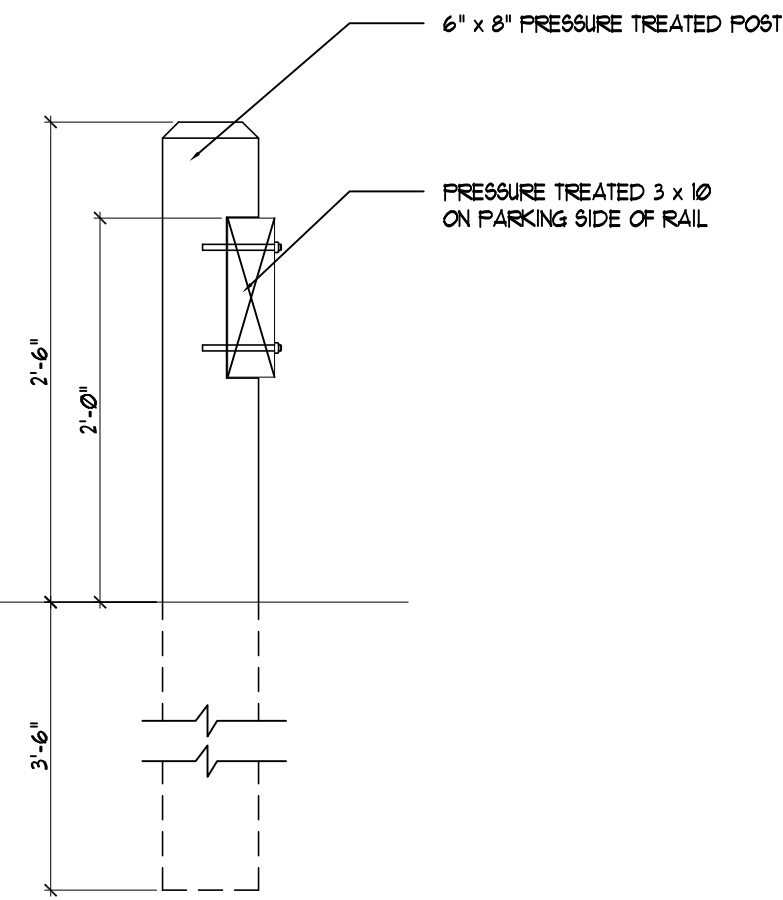
3 PROPOSED FENCE
SCALE: 1" = 1'-0"



4 PROPOSED GATE AT CONGRESS STREET
SCALE: 1" = 1'-0"



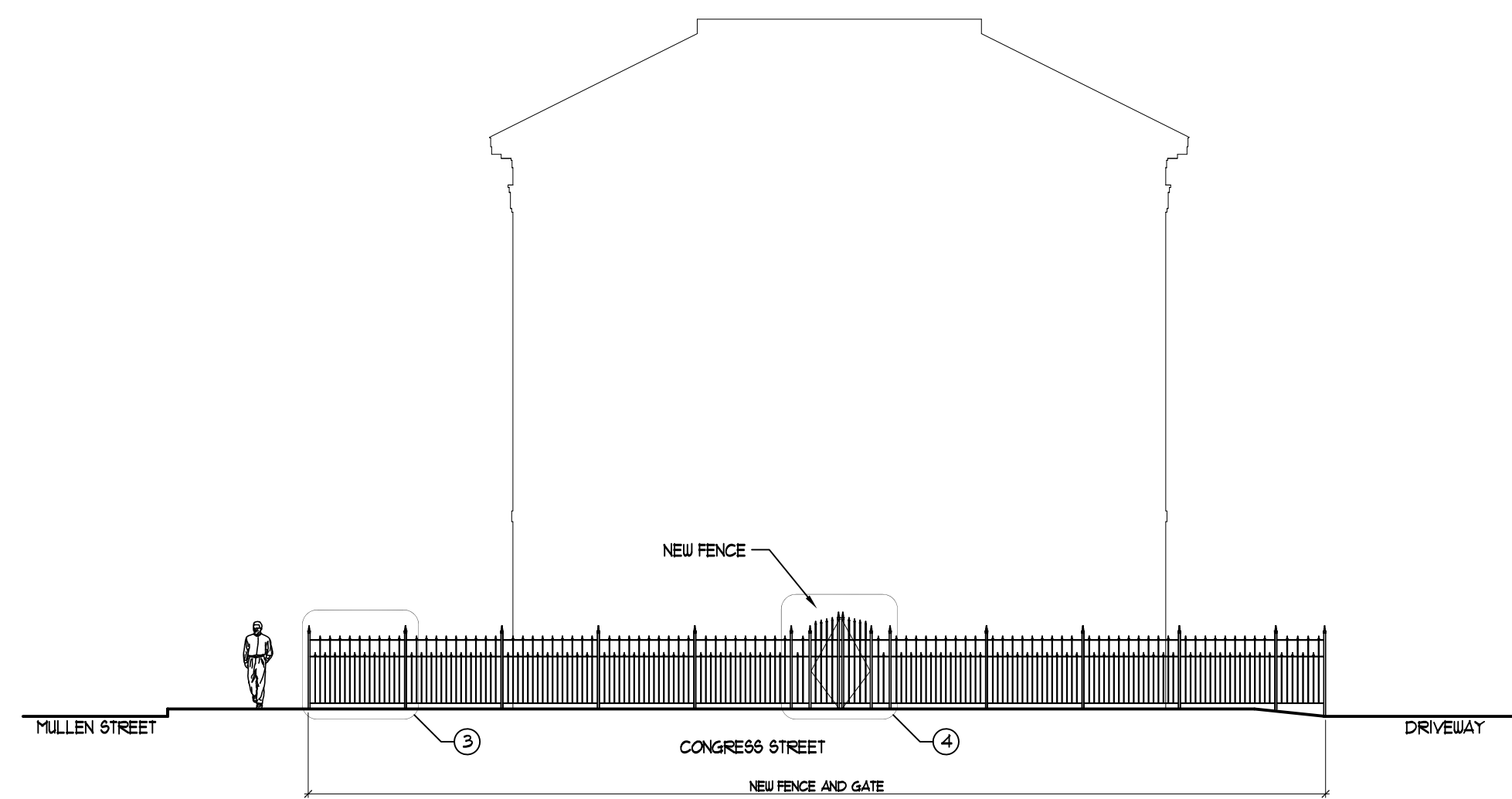
A PROPOSED RAIL AT DRIVEWAY
SCALE: 1" = 1'-0"



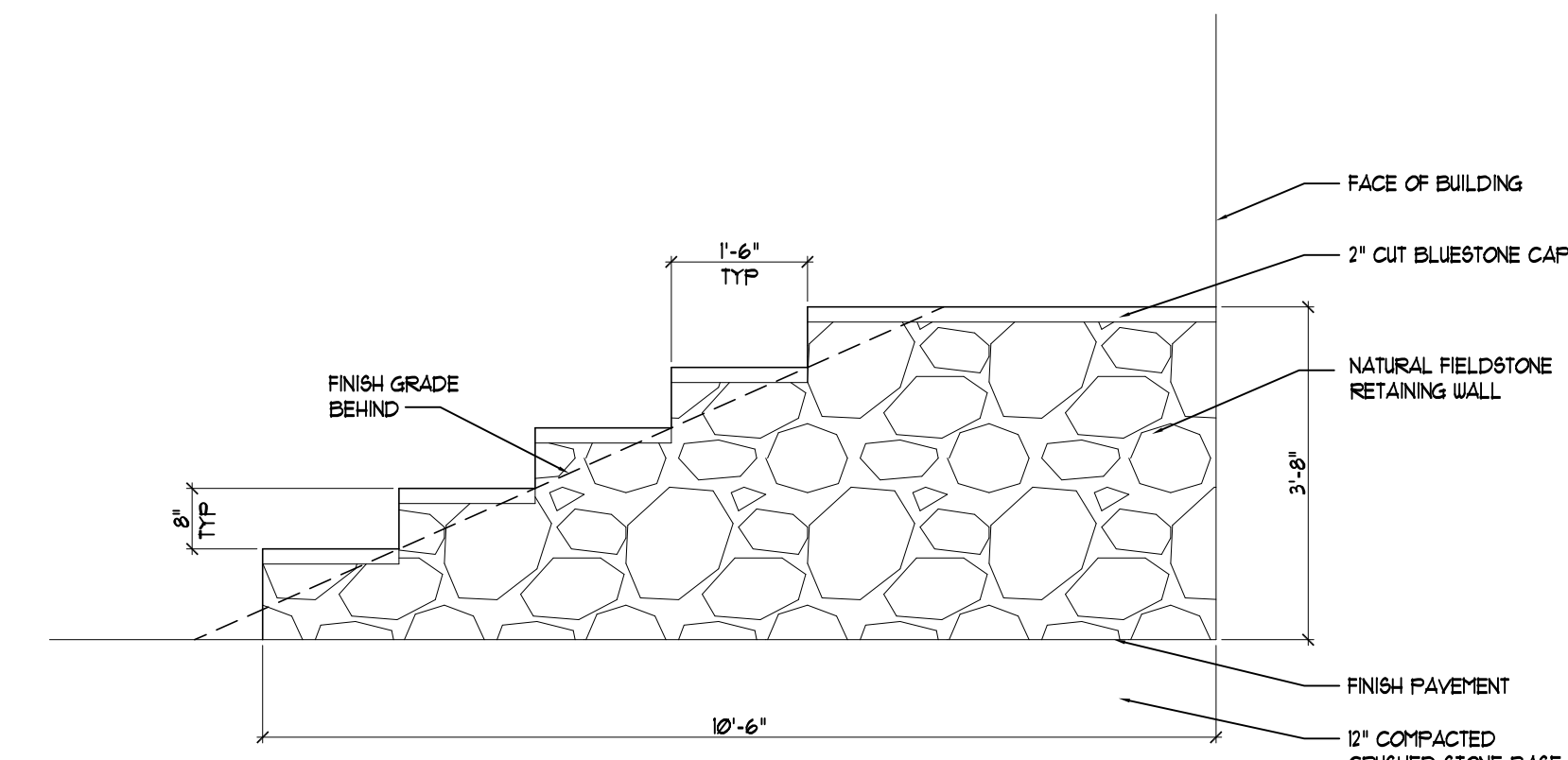
SECTION



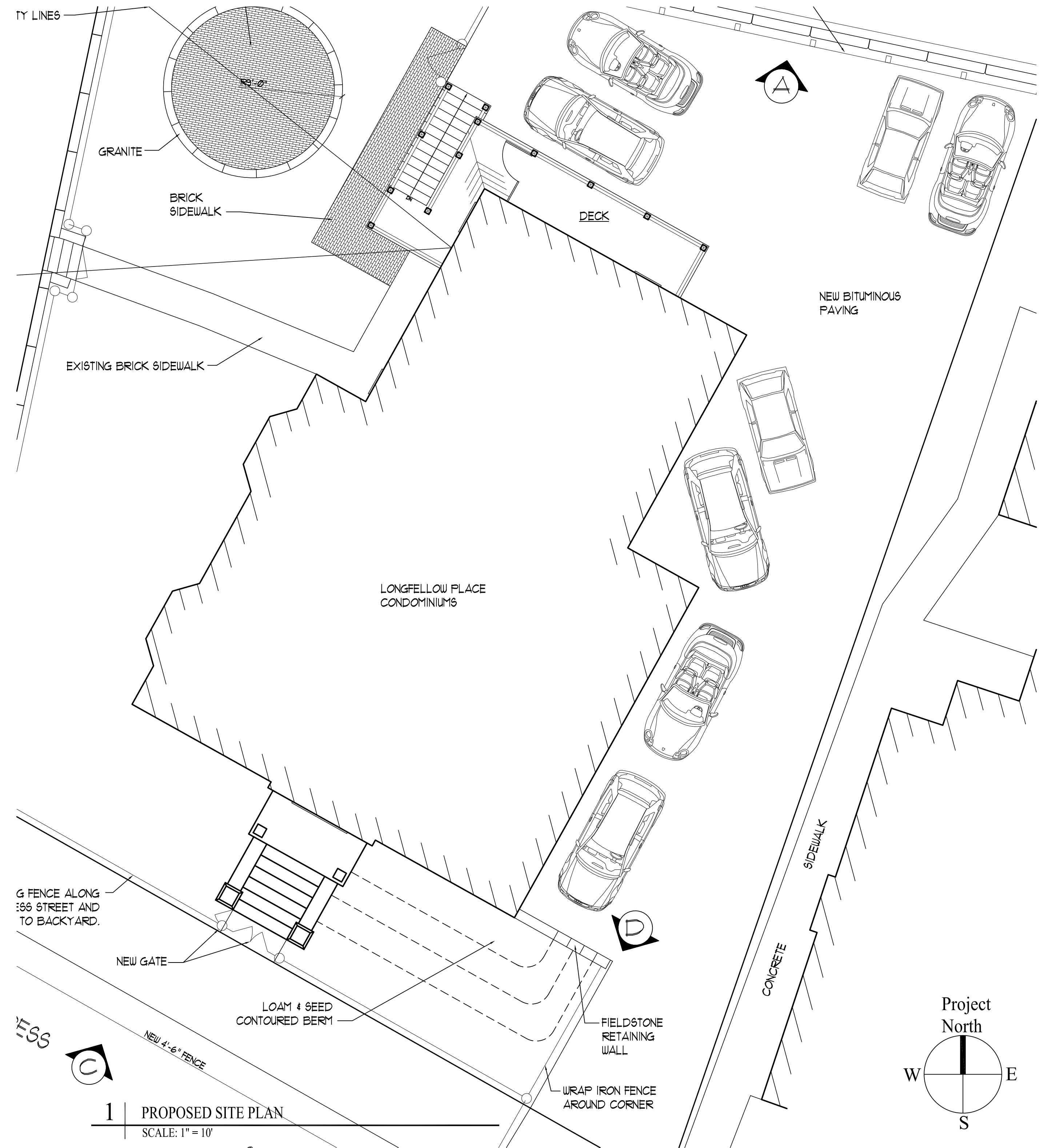
B MULLEN STREET ELEVATION
SCALE: 1" = 10'-0"



C CONGRESS STREET ELEVATION
SCALE: 1" = 10'-0"



D RETAINING WALL ELEVATION
SCALE: 1/2" = 1'-0"



1 PROPOSED SITE PLAN
SCALE: 1" = 10'

Prepared For:	Congress Place West, LLC C/O 10 Dana Street, Suite 400 Portland, ME 04101 Attn: Thomas W. Moulton
Consulting Engineer:	Structural Integrity 77 Oak Street Portland, Maine 04101 (207) 772-6022 Fax (207) 772-4056
Architect:	ARCHETYPE architects 48 Union Wharf Portland, Maine 04101 (207) 772-6022 Fax (207) 772-4056
Project:	Condominium Plans Longfellow Place Condominium 327 CONGRESS STREET PORTLAND, CUMBERLAND COUNTY, MAINE
Revisions:	
Date:	6 APRIL 2012
Scale:	AS NOTED
SITE PLAN AND SITE ELEVATIONS	
A0.02	