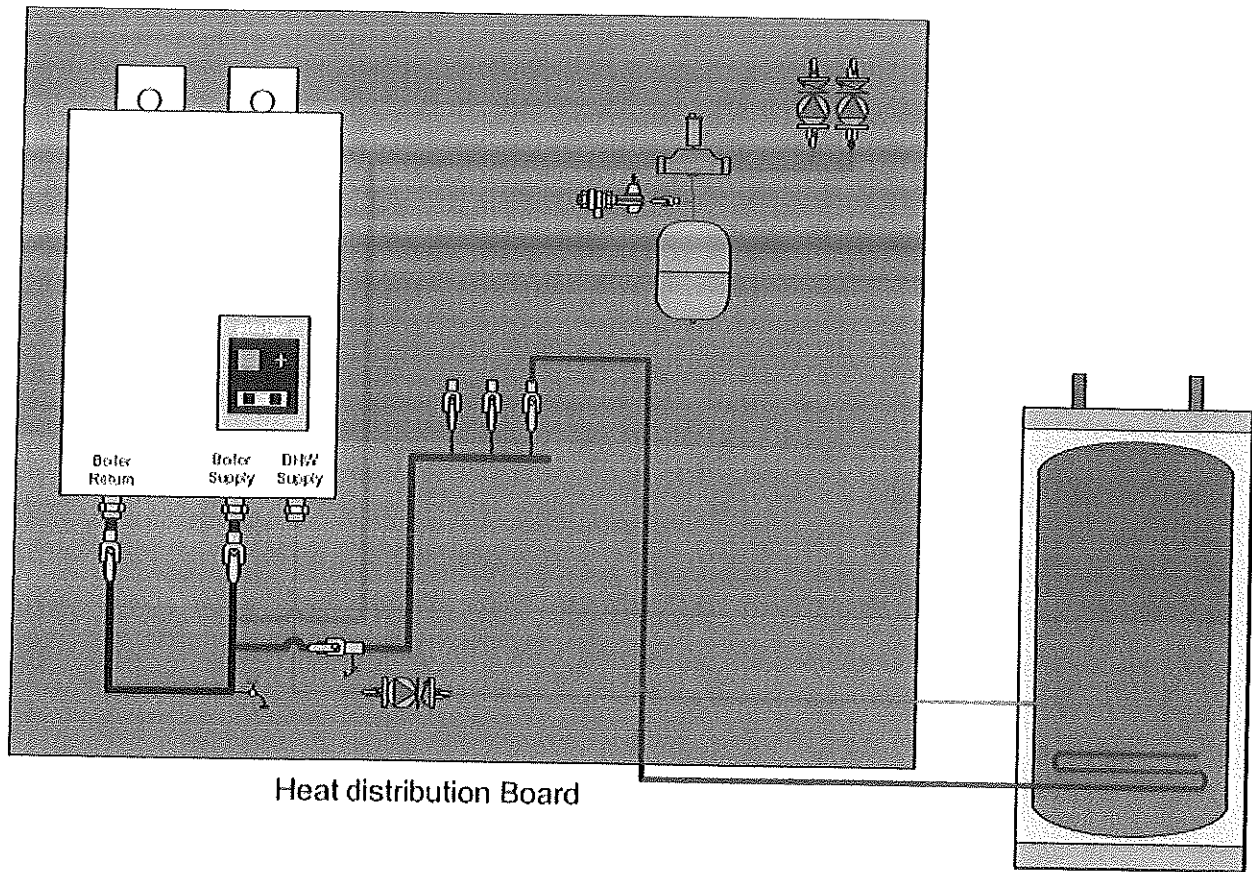




reVision
heat

Professional design, installation and service of alternative heating systems to eliminate oil consumption

System Design (actual design will vary)



Scope of Work

Price to include the following:

- BPI-Certified energy audit to qualify for Efficiency Maine financing & rebates
- Summary of efficiency improvement recommendations
- General contracting services for insulation improvements

TriangleTube Prestige Solo – \$14,120

- Purchase and complete installation of the boiler, including venting and piping to distribution manifold. Boiler will be installed on 2 x 4 wall on south side of house
- Installation of Heat Flo 40-gallon stainless steel indirect tank for domestic hot water
- Integration of Heat Flo 40-gallon tank with existing domestic hot water lines
- Tying condensate from boiler into drainage



reVision
heat

Professional design, installation and service of alternative heating systems to eliminate oil consumption

- Removal of unused basement piping
- Safe removal of two oil boilers and two oil tanks
- Connecting gas piping from single meter to boiler and interfacing with Unitil
- Installation of flammable gas and CO detector in basement
- All necessary licenses and certifications for a code-compliant installation

Insulation and Air Sealing – \$5,712

- ATTIC Air Sealing: Apply expanding foam to any electrical, plumbing, or vent chases leading to attic – block gable end walls
- ATTIC HATCH: Air seal around frame, install 4" rigid board insulation to hatch, an insulation barricade, weather stripping and clasps to compress hatch
- CHIMNEY CHASE(S) – Attic: Seal chimney chase with sheet metal, fire rated caulking, and a barricade 2" away for insulation to abut
- BATHROOM EXHAUST DUCT - Replace: replace existing bath fan duct with insulated duct and vent adjacent to the existing gable vent – install a draft diverter on the end of the duct
NOTE: The attic is too high for our crew to install a proper bath fan vent cap – we would need a lift for the front the of house, but that would be a very long duct run for the fan
- INSULATE – Enclosed Slopes: Fill rafter cavities with dense pack cellulose – R20
- INSULATE – Attic/Ceiling Flat: Install R49-60 (15"-17") to all attic flat sections with loose fill blown cellulose
- INSULATE – Dormer Vertical Walls: Install ~R13 to wall sections. Try to access walls from the attic – if not accessible install via drill & fill from the 3rd floor.

Price does not include the following:

- Removal of belongings for adequate access to perform work
- Any additional gas piping
- Any other work not listed in the scope of work above

Available Incentives

This installation qualifies for a \$1,900 rebate through Efficiency Maine's Home Energy Savings Program. The rebate will be made available after project completion. Please read the Efficiency Maine Home Energy Savings Program Manual for details.

Warranty

Triangle Tube provides a limited 10 year warranty on the boiler.
Heat Flo offers a limited lifetime warranty on the indirect tank.
reVision heat provides a 1 year warranty on all labor.

Payment Terms

30% due upon acceptance of this proposal
30% due upon delivery of boiler