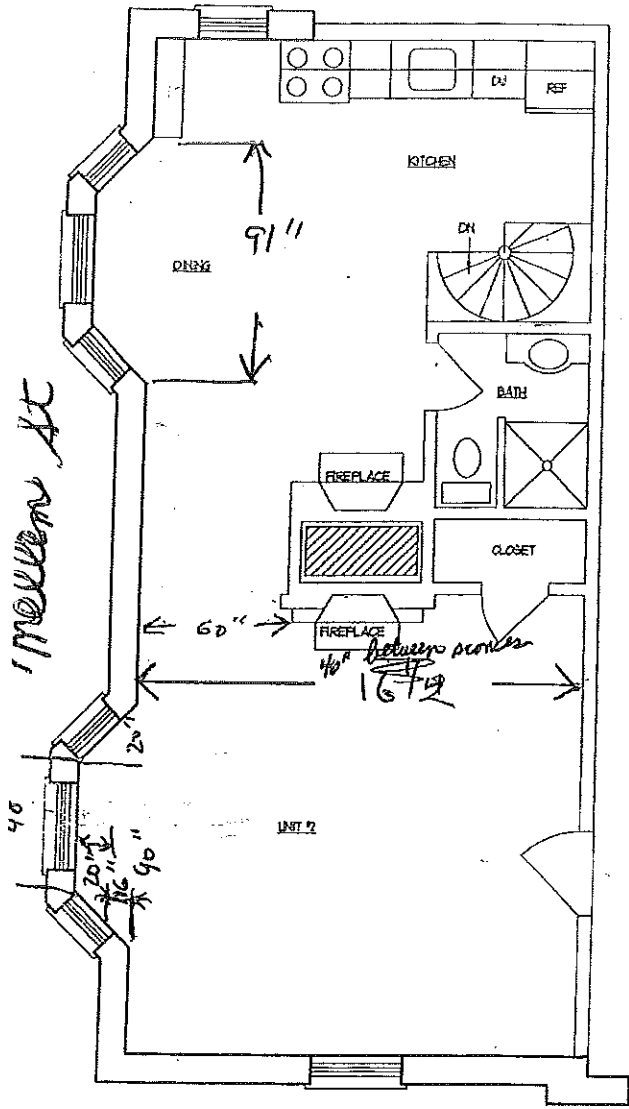


1ST FL

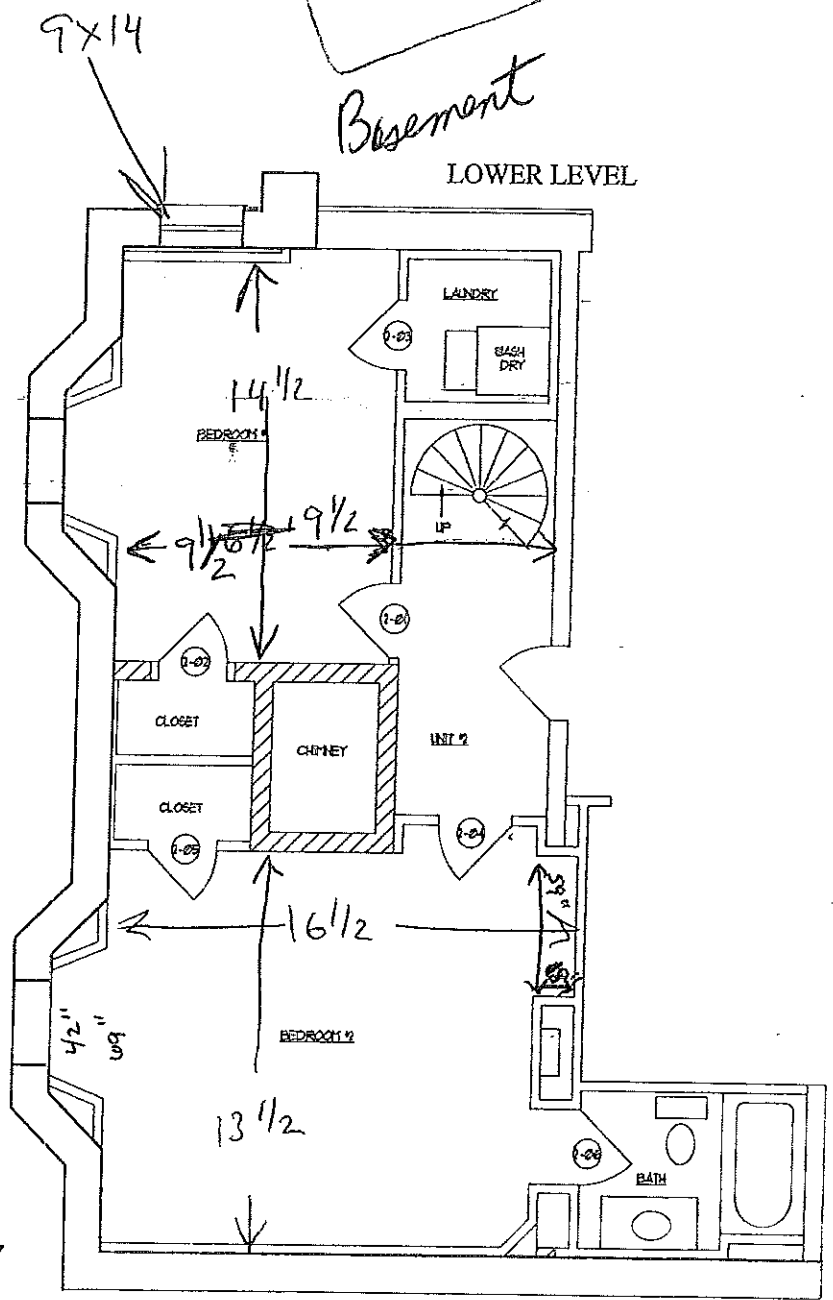
UPPER LEVEL



LONGFELLOW PLACE
 unit #2

Basement

LOWER LEVEL



MORNING ST

Congress St

727 CONGRESS STREET
PORTLAND, MAINE

UNIT 2 FLOOR PLAN

SCALE: 1/4" = 1'-0"
1335 SQUARE FEET

13x16