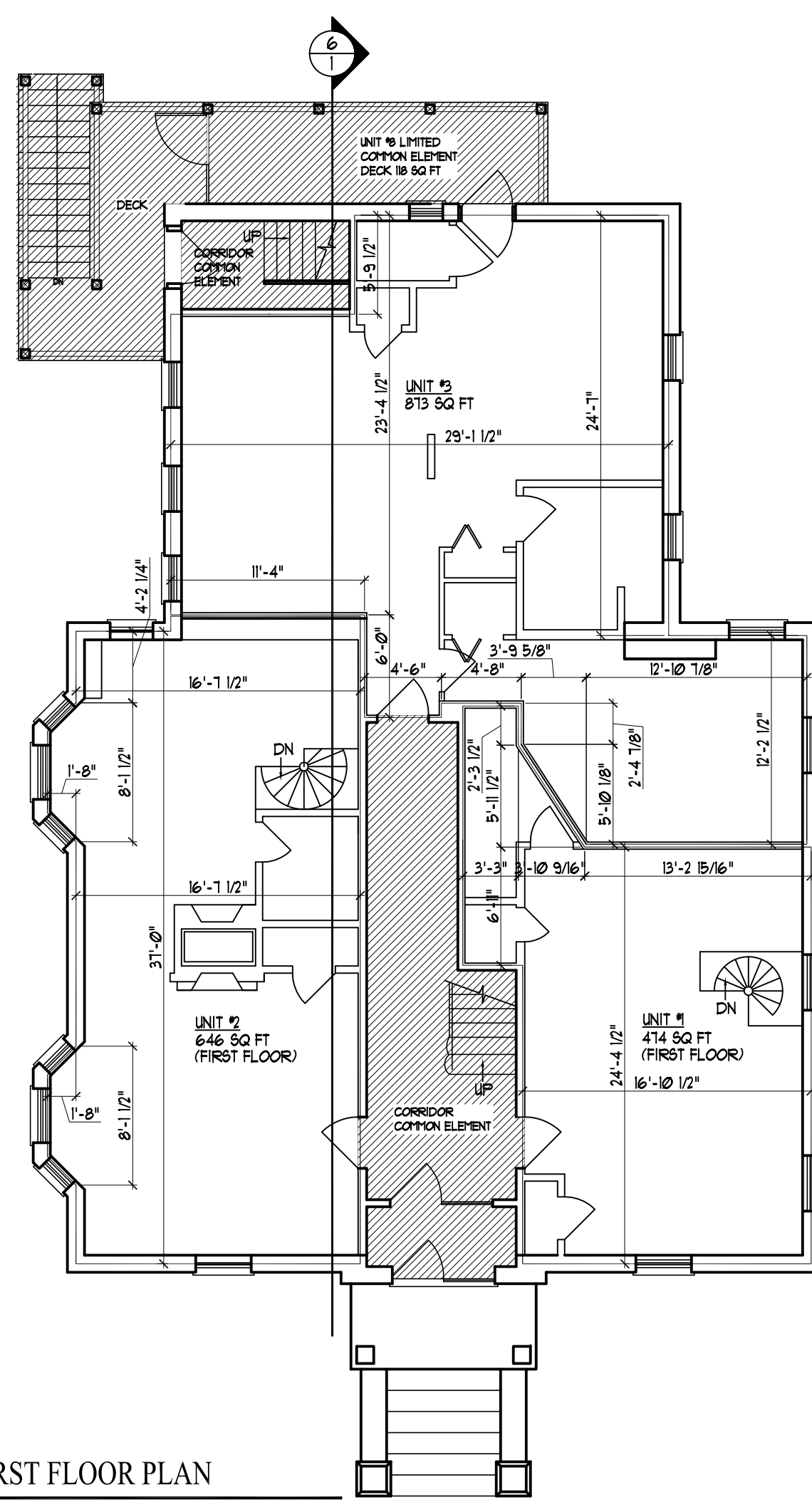
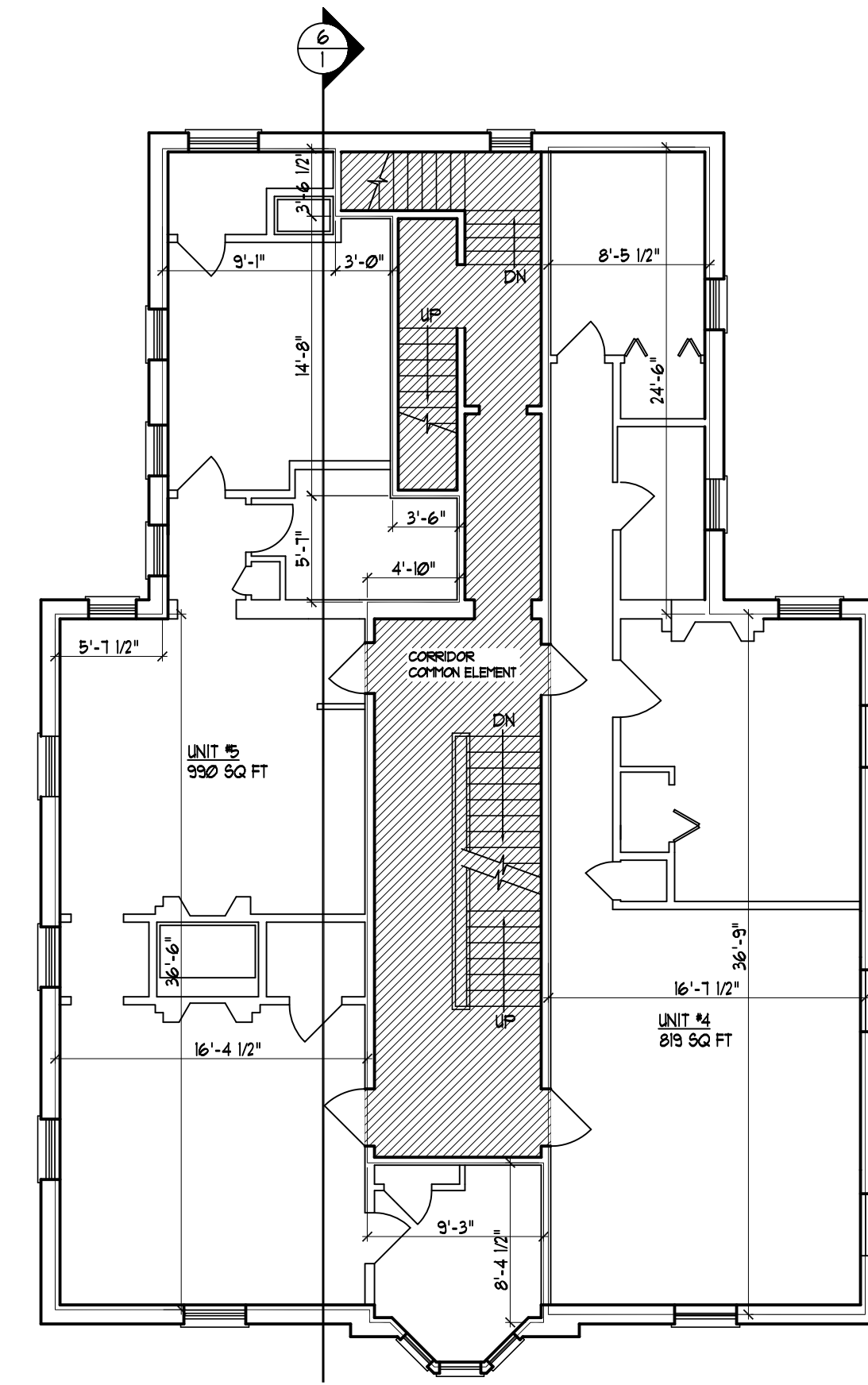


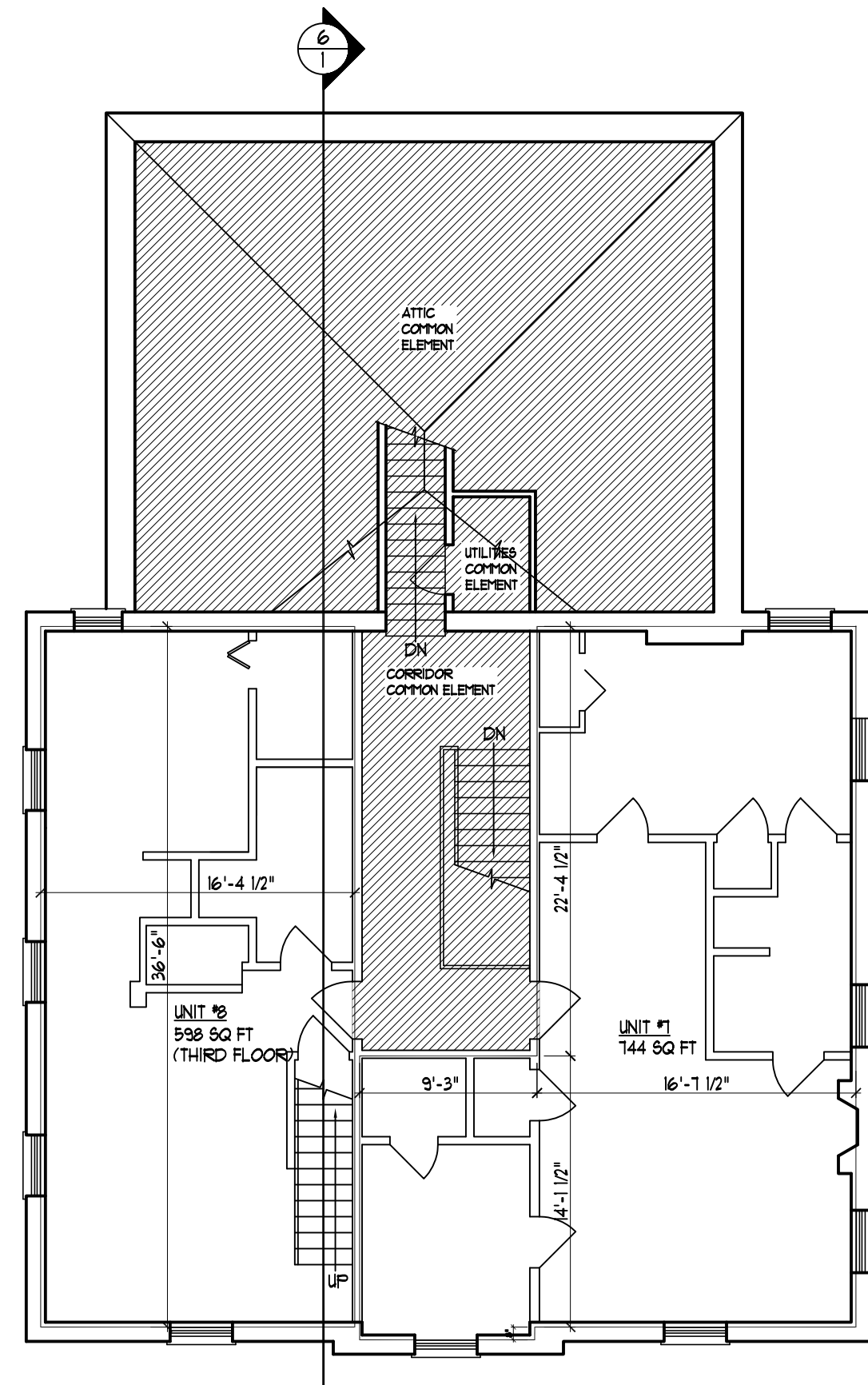
1 LOWER LEVEL FLOOR PLAN  
SCALE: 1/8"=1'-0"



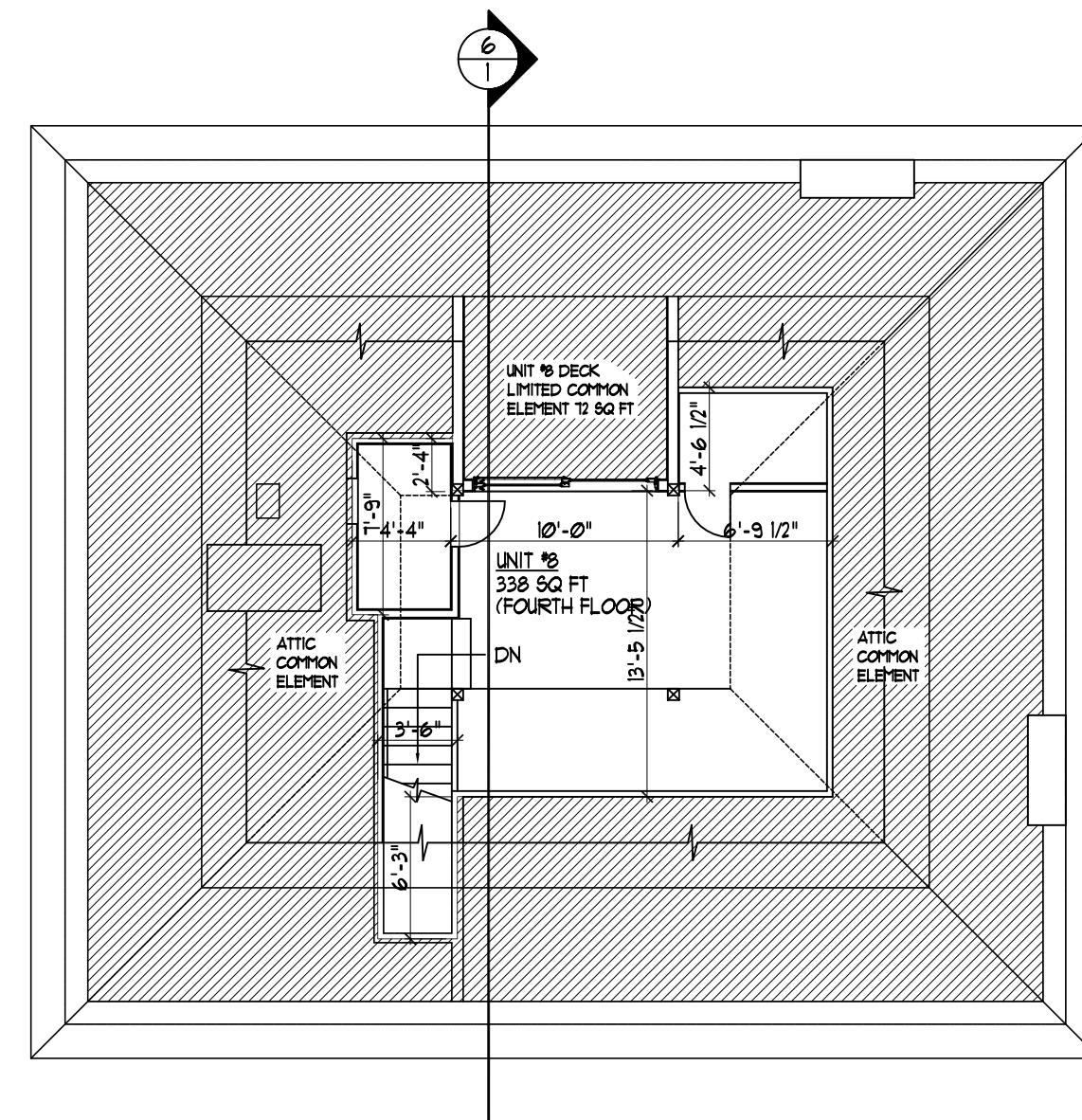
2 FIRST FLOOR PLAN  
SCALE: 1/8"=1'-0"



3 SECOND FLOOR PLAN  
SCALE: 1/8"=1'-0"



4 THIRD FLOOR PLAN  
SCALE: 1/8"=1'-0"

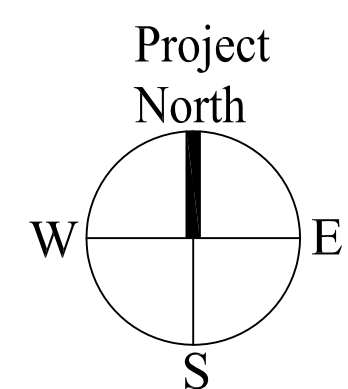
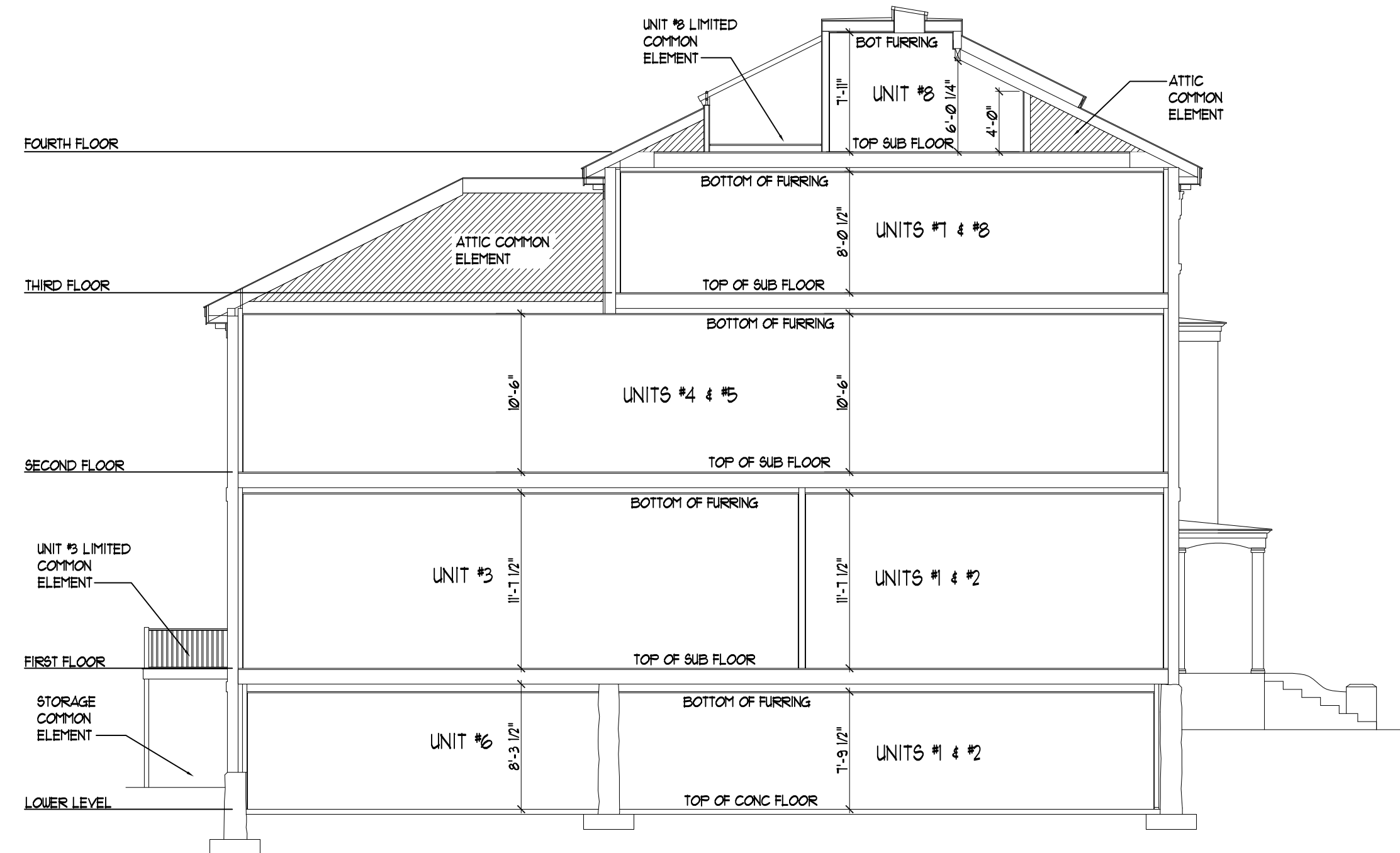


5 FOURTH FLOOR PLAN  
SCALE: 1/8"=1'-0"

APPROXIMATE UNIT SQUARE FOOTAGES

UNIT #1	400 SF LOWER LEVEL
	414 SF FIRST FLOOR
	814 SF TOTAL
UNIT #2	689 SF LOWER LEVEL
	646 SF FIRST FLOOR
	1335 SF TOTAL
UNIT #3	813 SF
UNIT #4	819 SF
UNIT #5	990 SF
UNIT #6	847 SF
UNIT #7	144 SF
UNIT #8	998 SF THIRD FLOOR
	338 SF FOURTH FLOOR
	936 SF TOTAL

6 TYPICAL BUILDING SECTION  
SCALE: 1/8"=1'-0"



Prepared For Owner of Record:

Congress Place West, LLC  
C/O 10 Dana Street, Suite 400  
Portland, ME 04101  
Attn: Thomas W. Moulton

Architect:

**ARCHETYPE**  
architects  
48 Union Wharf Portland, Maine 04101  
(207) 772-6022 Fax (207) 772-4056

Project:

Condominium Plans  
Longfellow Place  
Condominium

277 CONGRESS STREET  
PORTLAND, CUMBERLAND COUNTY, MAINE

Revisions:

Date: 9 April 2012  
Scale: 1/8" = 1'-0"

FLOOR PLANS &  
BUILDING SECTIONS

Sheet  
**1**  
of One