

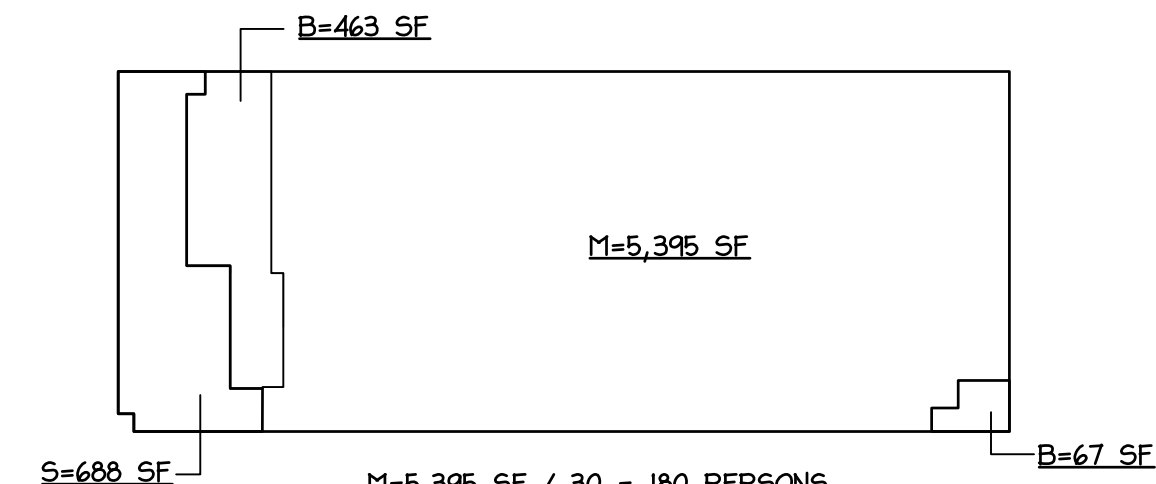
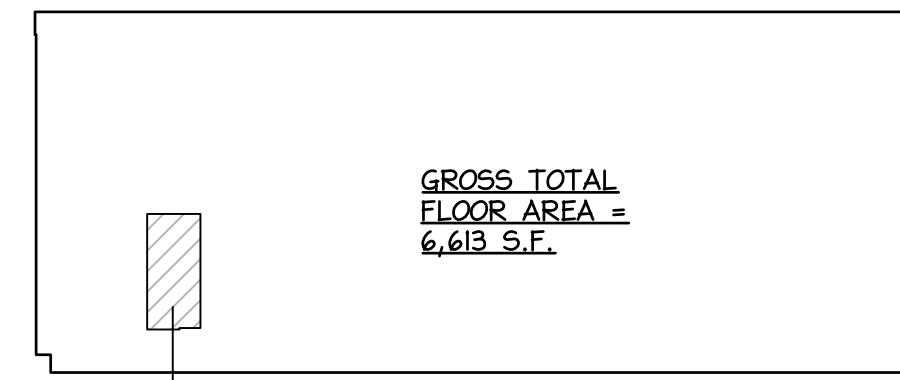
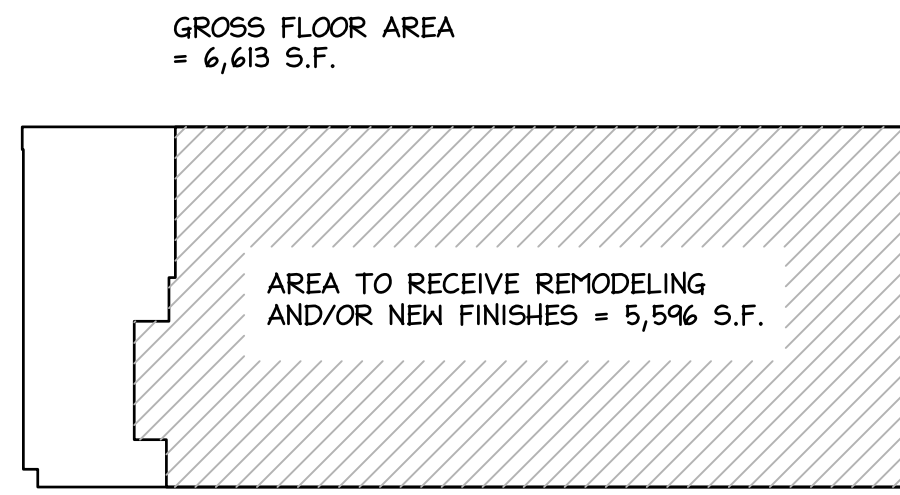
THIS DESIGN AND THE DRAWINGS THEREFORE, PREPARED FOR THIS PROJECT, ARE THE PROPERTY OF THE ARCHITECT, BRUCE RONAYNE HAMILTON ARCHITECTS, INC. AND THE DESIGN AND/OR DRAWINGS MAY NOT BE USED IN WHOLE OR IN PART FOR ANY OTHER THAN FOR THE ORIGINAL PROJECT FOR WHICH THE DESIGN AND/OR DRAWINGS WERE PREPARED. WITHOUT THE EXPRESSED WRITTEN PERMISSION OF THE ARCHITECT, BRUCE RONAYNE HAMILTON ARCHITECTS, INC. NO BUILDING PERMIT SHALL BE ISSUED BY ANY BUILDING DEPARTMENT UNTIL THE BUILDING DEPARTMENT OFFICIAL HAS RECEIVED THE ORIGINAL SEAL AND SIGNATURE OF THE ARCHITECT, BRUCE RONAYNE HAMILTON ARCHITECTS, INC.

REV. NO.	DESCRIPTION OF REV.	DATE
3-21-16	ISSUED FOR GC BIDDING/BUILDING PERMIT	3-21-16

PROJECT: **RITE AID STORE #3298**  
713 CONGRESS STREET  
PORTLAND, MAINE

SUBJECT: **LIFE SAFETY PLAN**

JOB NO. 1632	SCALE 1/8" = 1'-0"	DATE 3-21-16	DRAWN BY LT
SHEET NO. 1			



M=5,395 SF / 30 = 180 PERSONS  
B=530 SF / 100 = 6 PERSONS  
S=688 SF / 300 = 3 PERSONS  
TOTAL OCCUPANTS = 189 PERSONS

RITE AID,  
713 CONGRESS ST.  
PORTLAND, ME

RITE AID,  
713 CONGRESS ST.  
PORTLAND, ME

RITE AID,  
713 CONGRESS ST.  
PORTLAND, ME

**LIFE SAFETY CODE SPECIFIC REVIEW:**

**2009 NFPA LIFE SAFETY 101 CODE**

SEE BUILDING AND LIFE SAFETY CODE REVIEW UNDER SEPARATE COVER AS WELL WHERE THIS INFORMATION IS DUPLICATED AND INCLUDES ADDITIONAL CODE STUDY INFORMATION FOR 2009 INTERNATIONAL BUILDING CODE AND 2009 INTERNATIONAL EXISTING BUILDING CODE.

**LIFE SAFETY CODE SPECIFIC REVIEW:**

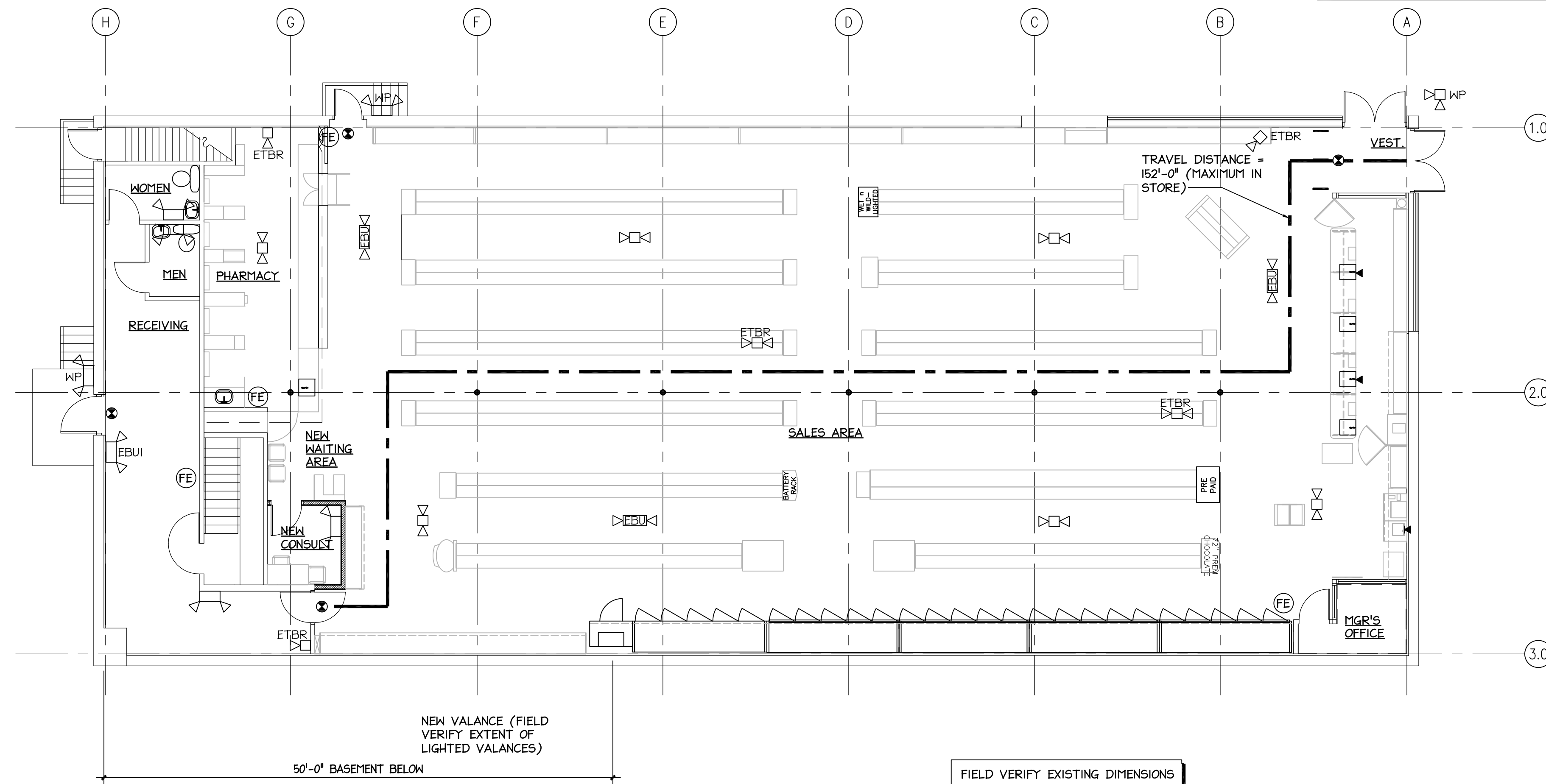
- 37.1 - MERCANTILE.
- 37.1.4.2.1 - SUBCLASSIFICATION OF OCCUPANCY - CLASS "B".
- 37.1.6 - MIN. CONSTRUCTION REQUIREMENTS. NONE. SEE IBC CODE REQUIREMENTS LISTED ABOVE (5B, COMBUSTIBLE).
- 37.2 - MEANS OF EGRESS REQUIREMENTS. REFERS TO CHAPTER 7 OF NFPA LIFE SAFETY 101.

**CHAPTER 7 MEANS OF EGRESS**

- 7.1.3.1 - EXIT ACCESS CORRIDORS. N/A
- 7.1.3.2 EXITS
- 7.1.5 HEADROOM. CONFORMS. > 7'-6" MIN.
- 7.2.2 STAIRS. N/A.
- 7.2.2.6.3.1 OUTSIDE STAIRS. CONFORMS.
- 7.2.5 RAMPS. N/A.
- 7.3.1.2 OCCUPANT LOAD FACTOR (NO CHANGES). SEE IBC CHAPTER 10 INFORMATION ABOVE.
- 7.3.2 MEASUREMENT OF MEANS OF EGRESS.
- 7.3.4 MIN. WIDTH. 36" FOR NEW CONSTRUCTION. CONFORMS.
- 7.3.4.1.2 MIN. WIDTH 28" FOR EXISTING BUILDINGS. CONFORMS.
- 7.4 NUMBER OF MEANS OF EGRESS. 2 MIN., 3 PROVIDED (EXISTING).
- 7.5 ARRANGEMENT OF MEANS OF EGRESS.
- 7.5.4.2 CONFORMS FOR EXIT REMOTENESS.
- 7.9 EMERGENCY LIGHTING. COMPLIES.
- 7.10 COMPLIES FOR EXIT SIGNAGE.

**BUSINESS USE SPECIFIC SECTIONS:**

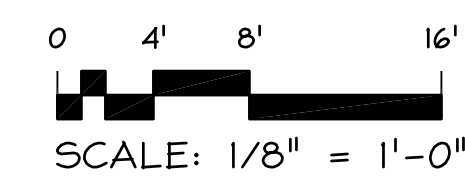
- 37.2.2 MEANS OF EGRESS. COMPLIES.
- 37.2.2.3 STAIRS. N/A.
- 37.2.4 NUMBER OF EXITS, COMPLIES. 3 PROVIDED.
- 37.2.5.1 MEANS OF EGRESS ARRANGEMENT. EXISTING COMPLIES.
- 37.2.5.2 DEAD END CORRIDORS 50' MAX. COMPLIES.
- 37.2.5.3.1 COMMON PATH OF TRAVEL (SPRINKLERED). 100' MAX. COMPLIES.
- 37.2.5.4 AISLES. COMPLIES.
- 37.2.5.7 ONE-HALF OF EGRESS CAPACITY AT STREET ENTRANCE. COMPLIES (72' EGRESS WIDTH PROVIDED).
- 37.2.5.8 EGRESS THROUGH CHECKOUTS. NONE.
- 37.2.5.10 WHEELED CARTS. COMPLIES.
- 37.2.6 TRAVEL DISTANCE (SPRINKLERED) 250' MAX. COMPLIES.
- 37.2.8 ILLUMINATION OF MEANS OF EGRESS. COMPLIES
- 37.2.9 EMERGENCY LIGHTING. COMPLIES. EXIT SIGN AT REAR SALES AREA EGRESS DOOR IS WALL MOUNTED AND WILL BE SUSPENDED FROM CEILING FOR BETTER VISIBILITY. NOTED ON PLAN A-2.1 AND LS-1.
- 37.3.3.2.1 INTERIOR WALL FINISHES - TO COMPLY WITH SECTION 10.2.
- 37.3.4 DETECTION, ALARM & COMMUNICATION SYSTEMS. NO EXISTING MONITORED FIRE ALARM SYSTEM. UPGRADED IN 2013. HAS SPRINKLER NOTIFICATION SYSTEM.



REFER TO SHEET E-1 FOR LIFE SAFETY ITEM NOTES AND UPGRADES NOT SHOWN ON THIS PLAN FOR CLARITY

FIELD VERIFY EXISTING DIMENSIONS

**LIFE SAFETY PLAN**  
SCALE: 1/8" = 1'-0"



**LEGEND**

- CEILING MOUNTED EMERGENCY LIGHT UNIT
- WALL MOUNTED EMERGENCY LIGHT UNIT
- WALL MOUNTED FIRE EXTINGUISHER
- EXIT LIGHT
- HORN STROBE UNIT (AS REQUIRED BY FIRE DEPARTMENT)

REFER TO SHEET E-1 FOR LIFE SAFETY ITEM NOTES AND UPGRADES NOT SHOWN ON THIS PLAN FOR CLARITY