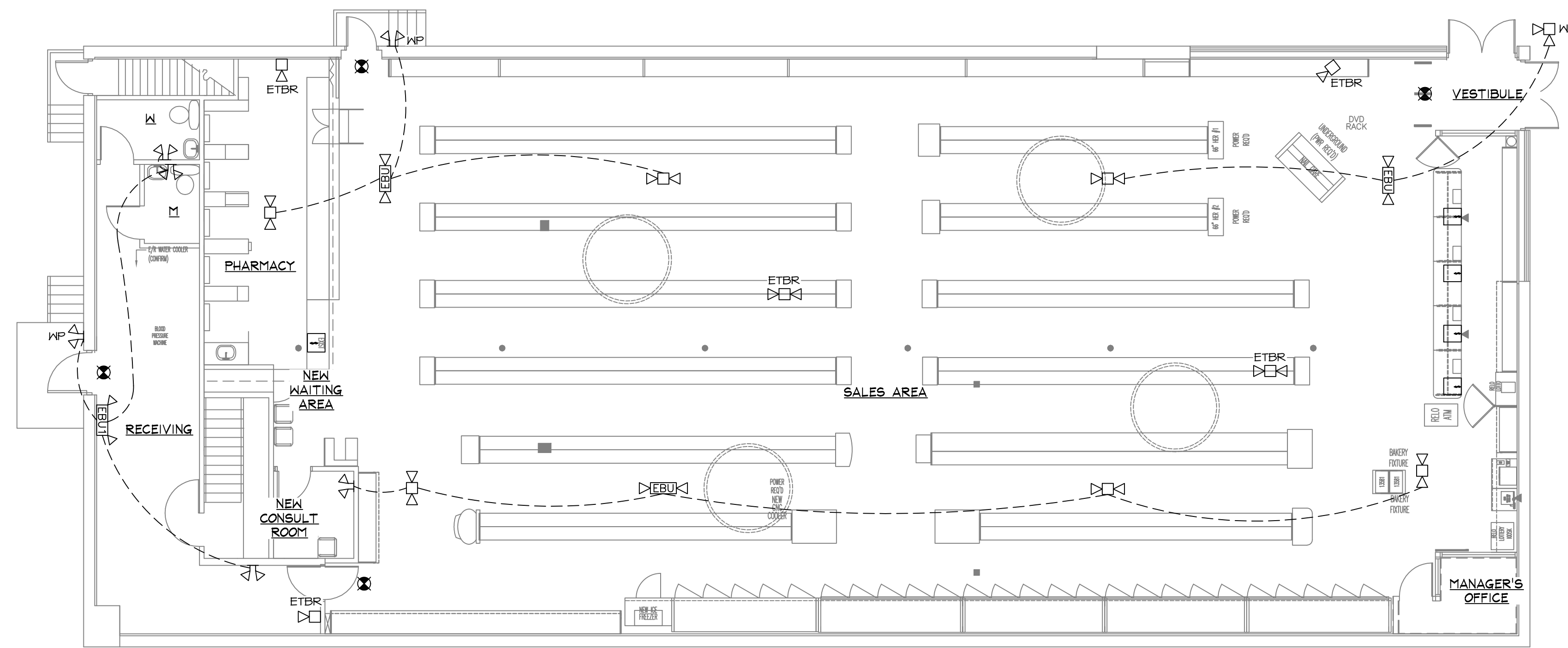


SPACE RESERVED FOR CITY OF PORTLAND,  
MAINE ELECTRONIC STAMP



**FLOOR PLAN - EMERGENCY LIGHTING**  
SCALE: 1/8" = 1'-0"

**FLOOR PLAN - EMERGENCY LIGHTING NOTES**

- EXIT SIGNS AND EMERGENCY BATTERY UNITS SHALL BE FED FROM A LOCAL UNSWITCHED LIGHTING CIRCUIT.
- CONFIRM EXISTING EMERGENCY HEAD LOCATIONS AND RELOCATE IF NECESSARY FOR CODE COMPLIANT COVERAGE. VERIFY BATTERY CAPACITY OF EXISTING BATTERY UNITS BEFORE ADDING ADDITIONAL REMOTE HEAD LOADS. ADD ADDITIONAL BATTERY UNITS IF REQUIRED.
- EXISTING WIRING MAY BE REUSED IF CODE COMPLIANT.
- EXISTING EXIT SIGNS SHALL BE DISCONNECTED AND REMOVED.
- EXISTING BASEMENT LAYOUT TO REMAIN AS IS. GENERAL CONTRACTOR TO REVIEW EMERGENCY LIGHTING AND SUPPLEMENT/REPLACE AS REQUIRED BY CODE.

**EMERGENCY LIGHTING LEGEND**

- EXISTING SINGLE HEAD EMERGENCY LIGHTS TO BE REMOVED
- CEILING MOUNTED EMERGENCY LIGHT UNIT - ISOLITE BRH-2-12V-H8W
- ▲ EBU WALL MOUNTED EMERGENCY LIGHT UNIT - ISOLITE ELMR WITH (2) H5W HEADS
- ▲ EBU CEILING MOUNTED EMERGENCY LIGHT UNIT - ISOLITE ERT-12V-100 WITH (2) H8W-SD-NG HEADS
- ▲ EBU WALL MOUNTED EMERGENCY LIGHT UNIT - ISOLITE ELP-12V-100 WITH (2) H8W-SD-NG HEADS
- WP ▲ EXTERIOR WALL MOUNTED EMERGENCY LIGHT HEADS - ISOLITE BRH-2-12V-H12W-WP
- ▲ INTERIOR WALL MOUNTED EMERGENCY LIGHT HEADS - ISOLITE BRH-2-12V-H8W
- ⊗ EXIT LIGHT - ISOLITE - MATCH EXISTING STYLE AND PROVIDE WITH BATTERY BACKUP
- ETR EXISTING TO REMAIN
- ETR EXISTING EMERGENCY HEADS AND CABLING TO BE REMOVED



**BRUCE  
RONAYNE  
HAMILTON  
ARCHITECTS**

ARCHITECTURE  
LAND PLANNING  
INTERIOR DESIGN  
3D VISUALIZATION

833 TURNPIKE ROAD  
P.O. BOX 104  
NEW IPSWICH  
NEW HAMPSHIRE 03071

**RENO ENGINEERING  
& LIGHT DESIGN**  
MARLOW, NH 03456  
603-446-3426, 603-446-3731 (F)  
EMAIL: renoengineering@relightdesign.com  
Project Number: 1523

THIS DESIGN AND THE DRAWINGS THEREOF, PREPARED FOR THIS PROJECT, ARE THE PROPERTY OF THE ARCHITECT, BRUCE RONAYNE HAMILTON ARCHITECTS, INC. AND THE DESIGN AND/OR DRAWINGS MAY NOT BE USED IN WHOLE OR IN PART FOR ANY OTHER THAN THE ORIGINAL PROJECT FOR WHICH THE DESIGN AND/OR DRAWINGS WERE PREPARED. DESIGN AND/OR DRAWINGS ARE TO BE USED ONLY IN ACCORDANCE WITH THE EXPRESS WRITTEN PERMISSION OF THE ARCHITECT, BRUCE RONAYNE HAMILTON ARCHITECTS, INC. NO BUILDING PERMIT SHALL BE ISSUED BY ANY BUILDING DEPARTMENT, UNDER THE DISCRETION OF THE ARCHITECT, BRUCE RONAYNE HAMILTON ARCHITECTS, INC.

REV. NO.	DESCRIPTION OF REV.	REV. DATE
1	ISSUED FOR GC BIDDING/BUILDING PERMIT	3-21-16

PROJECT: **RITE AID STORE #3298**  
713 CONGRESS STREET  
PORTLAND, MAINE

SUBJECT: **EMERGENCY LIGHTING PLAN**

JOB NO. 1632  
SCALE: 1/8" = 1'-0"  
DATE: 3-21-16  
DRAWN BY: RELO

SHEET NO. **E-1**